

ENHANCE

Enhance Your System
with these Special Offers!



Connect Premium

NOW INCLUDED with our most popular system plans, for the ultimate protection and discounts for yourself and your equipment! Take advantage of this exclusive new program that provides you with an extra layer of protection AND can **save you up to \$300!**

- **Protect yourself** from costly replacements of lost or damaged equipment through our Connect Premium program
- **Up to 50% off** select features, accessories and services
- **25% off** Fall Detect service

Only \$6/month additional
(if not included in your plan)

Monitoring Center Phone Number

SAVE THIS NUMBER IN YOUR PHONE CONTACTS TO ENSURE YOU DON'T MISS AN IMPORTANT CALL FROM OUR MONITORING CENTER

1-800-932-3822

Please do not call
prior to reading
steps below.



Follow these steps below:

1. Add this phone number as a contact in your cell phone.
2. Ask your emergency contacts to do the same.
3. If you or your emergency contacts receive a call from this number, please answer!
4. If needed, call back the same number appearing on the Caller ID as not to cause any delay in processing an alarm.

Please note, there is no need to return the call unless requested by the monitoring center or if you have a question about an alarm.

SRDR-00031 Rev 2.

Quick Start Guide

Easy steps to setup
your system today!



Micro

We encourage our valued customers to use the testing processes outlined to allow operators more time to handle actual emergencies. Rest assured, a live operator will always be available to answer your call if an emergency were to occur.

SRDR-00031 Rev 2.

QUICK SETUP

Your System is "ACTIVE" and READY TO USE

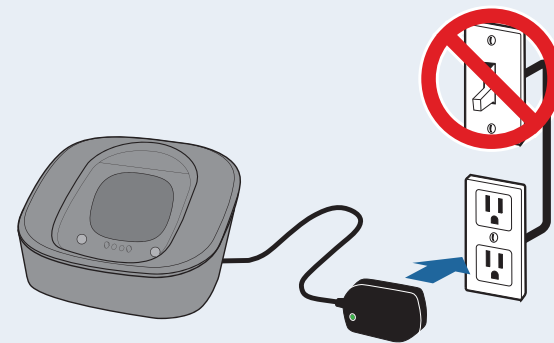
Micro

Includes a Micro and a cradle charger.



Plug the power cord into an electrical outlet

The electrical outlet should **NOT** be controlled by a light switch.

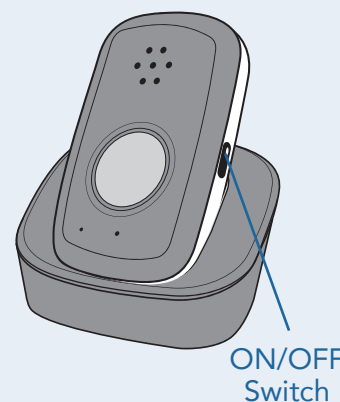


Place the Micro on the Cradle Charger

The Micro will turn on within a few seconds and the LED indicator around the emergency button will illuminate. It normally takes 30-60 seconds for the Micro to register with the cellular network.

When the Micro is setup correctly and connects to the cellular network, it will announce "system ready".

The LED indicator around the emergency button will illuminate red, indicating that the device still needs charging. When the device is fully charged, the LED indicator will change from red to green and will remain green until the device is removed from the charging cradle. It will take up to 3 hours for the device to be fully charged.



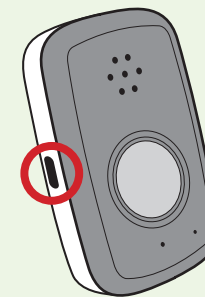
Next, be sure to test your system... see Testing page.

SRDR-00031 Rev 2.

TESTING

Micro

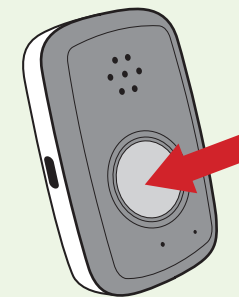
1



Press and hold the test button

This is located on the side of the device and is labeled with the letter T
The Micro will instruct you to press the emergency button

2



Press and hold the emergency button for 2 seconds

The Micro will announce, "Test Call sent to the Emergency Response Center"

3



If the test was successful...

The Micro will announce, "Thank you for testing your device"

4



If the test was unsuccessful...

The Micro will announce, "User auto-test failed, please contact Customer Support"

PLEASE REFER TO THE TECHNICAL SUPPORT NUMBER ON THE INSERT THAT CAME WITH THIS GUIDE FOR ANY QUESTIONS OR CONCERNS.

If you have not set up your system... see Setup page first.

SRDR-00031 Rev 2.