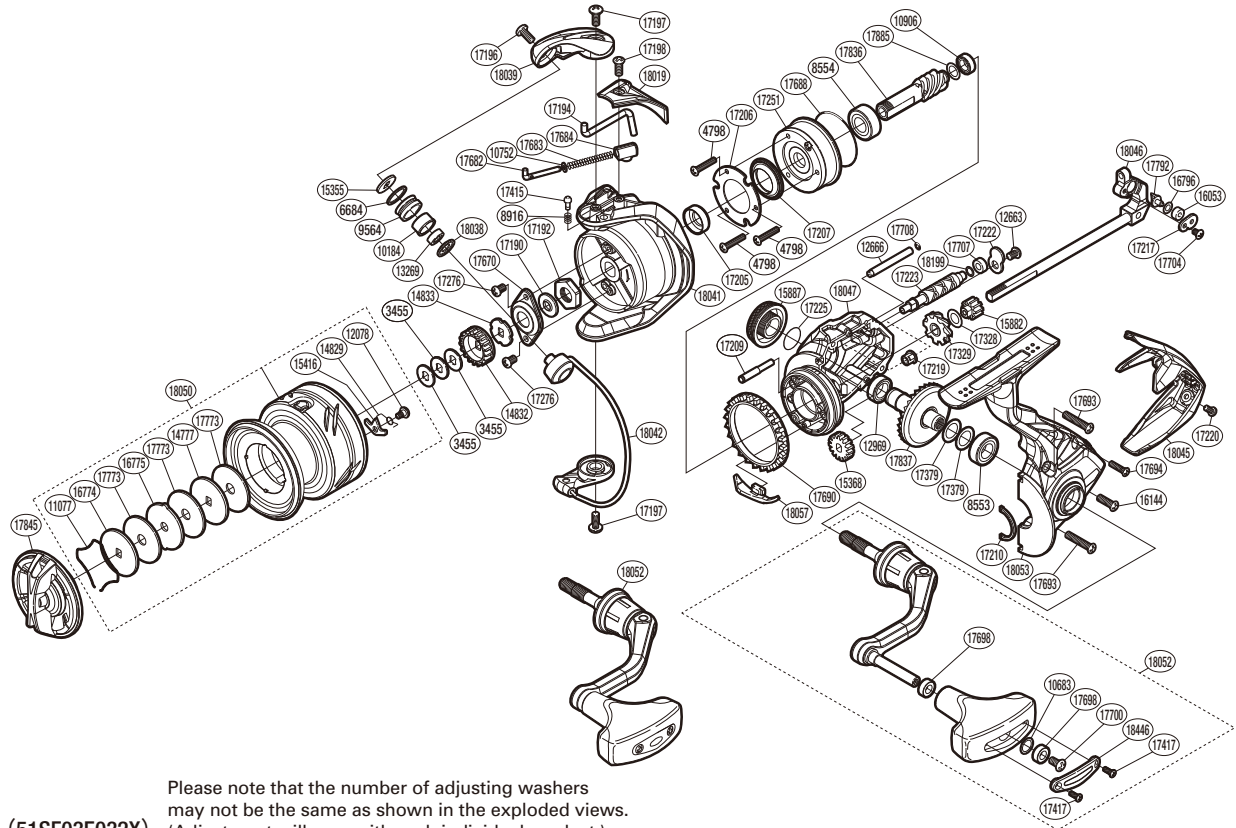


# SHIMANO

## ULTEGRA S A-RB

## ULT-C3000HGFB



Please note that the number of adjusting washers may not be the same as shown in the exploded views.  
(51SF03E032X) (Adjustment will vary with each individual product.)

| Part No. | Description                 | Part No. | Description               | Part No. | Description             |
|----------|-----------------------------|----------|---------------------------|----------|-------------------------|
| RD 3455  | Spool Washer                | RD16796  | Spacer                    | RD17690  | Friction Ring           |
| RD 4798  | Screw                       | RD17190  | Bearing Water Proof       | RD17693  | Screw                   |
| RD 6684  | Line Roller Spacer          | RD17192  | Rotor Nut                 | RD17694  | Screw                   |
| RD 8553  | Ball Bearing                | RD17194  | Bail Trip Lever           | RD17698  | Handle Knob Bushing     |
| RD 8554  | Ball Bearing                | RD17196  | Screw                     | RD17700  | Screw                   |
| RD 8916  | Click Spring                | RD17197  | Screw                     | RD17704  | Screw                   |
| RD 9564  | Line Roller                 | RD17198  | Screw                     | RD17707  | Worm Bushing            |
| RD10184  | Line Roller Bushing         | RD17205  | Rotor Ring                | RD17708  | O Ring                  |
| RD10683  | Washer                      | RD17206  | Roller Clutch Reinforce   | RD17773  | Drag Washer             |
| RD10752  | Bail Spring Guide A Support | RD17207  | Roller Clutch Water Proof | RD17792  | Oscillating Pawl        |
| RD10906  | Ball Bearing                | RD17209  | Idle Gear B Shaft         | RD17836  | Pinion Gear             |
| RD11077  | Drag Washers Retainer       | RD17210  | Flange Water Proof        | RD17837  | Drive Gear              |
| RD12078  | Screw                       | RD17217  | Oscillating Pawl Cover    | RD17845  | Drag Knob               |
| RD12663  | Screw                       | RD17219  | Worm Bushing (Front)      | RD17885  | Washer                  |
| RD12666  | Oscillating Guide A         | RD17220  | Screw                     | RD18019  | Bail Spring Cover       |
| RD12969  | Ball Bearing                | RD17222  | Worm Shaft Retainer       | RD18038  | Line Roller Support (B) |
| RD13269  | Ball Bearing                | RD17223  | Worm Shaft                | RD18039  | Bail Arm                |
| RD14777  | Key Washer                  | RD17225  | O Ring                    | RD18041  | Rotor                   |
| RD14829  | Drag Click Spring           | RD17251  | Roller Clutch Assembly    | RD18042  | Bail Assembly           |
| RD14832  | Spool Support A             | RD17276  | Screw                     | RD18045  | Rear Protector          |
| RD14833  | Spool Support B             | RD17328  | Washer                    | RD18046  | Main Shaft Assembly     |
| RD15355  | Line Roller Washer          | RD17329  | Idle Gear B (Large)       | RD18047  | Body                    |
| RD15368  | Idle Gear                   | RD17379  | Washer                    | RD18050  | Spool Assembly          |
| RD15416  | Drag Click                  | RD17415  | Click Pin                 | RD18052  | Handle Assembly         |
| RD15882  | Idle Gear B (Small)         | RD17417  | Screw                     | RD18053  | Side Cover              |
| RD15887  | Handle Screw Cap            | RD17670  | Rotor Nut Lock Plate      | RD18057  | Bail Trip Strike        |
| RD16053  | Oscillating Slider Bushing  | RD17682  | Bail Spring Guide A       | RD18199  | Washer                  |
| RD16144  | Screw                       | RD17683  | Bail Spring               | RD18446  | Handle Knob I.D. Plate  |
| RD16774  | Key Washer                  | RD17684  | Bail Spring Seat          |          |                         |
| RD16775  | Eared Washer                | RD17688  | O Ring                    | RD18054  | Anti Line Slip Sticker  |