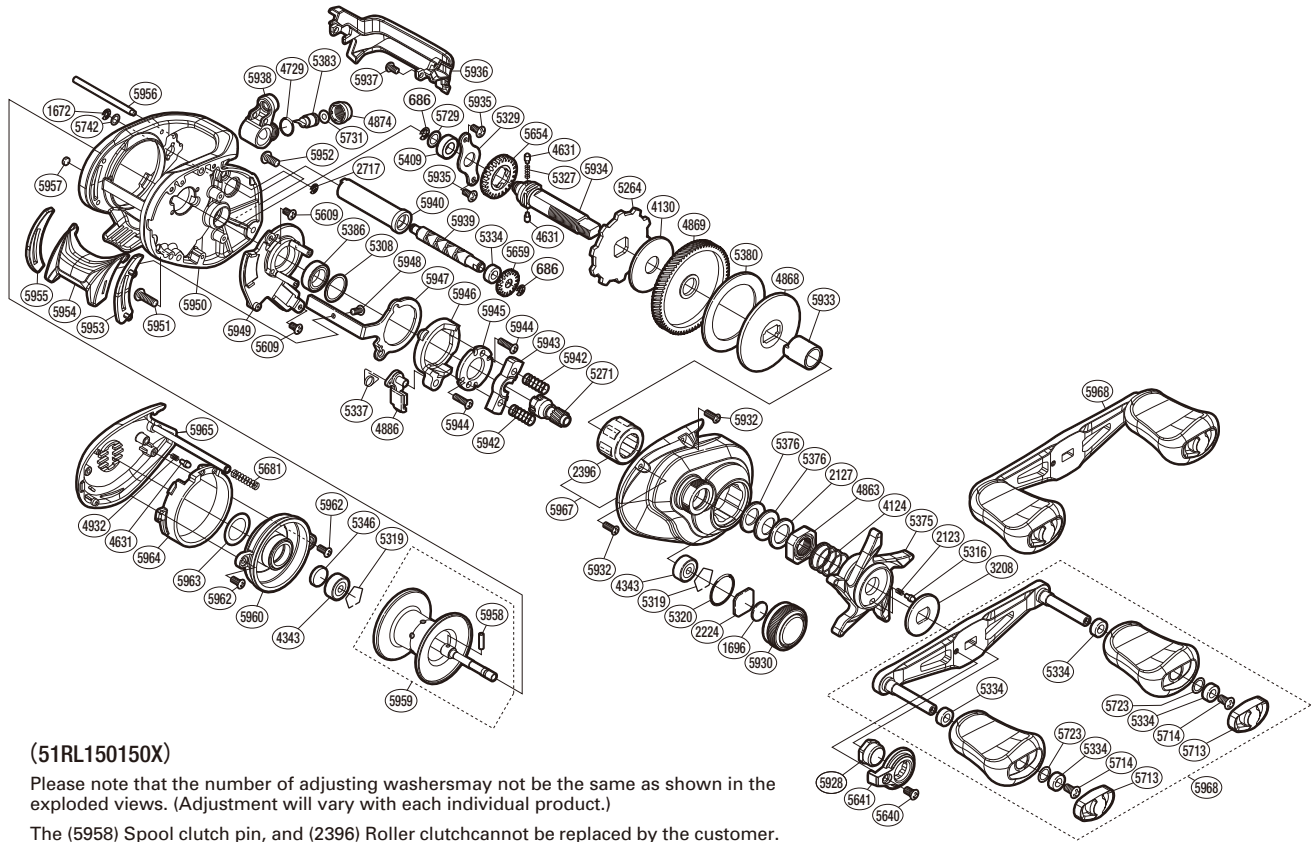


# SHIMANO

**SLX** SA-RB

**SLX150**



(51RL150150X)

Please note that the number of adjusting washers may not be the same as shown in the exploded views. (Adjustment will vary with each individual product.)

The (5958) Spool clutch pin, and (2396) Roller clutch cannot be replaced by the customer. To replace these parts, please request after-sales service.

| Part No. | Description              | Part No. | Description                 | Part No. | Description               |
|----------|--------------------------|----------|-----------------------------|----------|---------------------------|
| BNT0686  | E Lock                   | BNT5337  | Clutch Pawl Spring          | BNT5939  | Worm Shaft                |
| BNT1672  | E Lock                   | BNT5346  | Spacer B                    | BNT5940  | Level Wind Guard          |
| BNT1696  | Cast Control Spacer (B)  | BNT5375  | Star Drag                   | BNT5942  | Yoke Spring               |
| BNT2123  | Click Spring             | BNT5376  | Drag Spring Washer          | BNT5943  | Yoke                      |
| BNT2127  | Star Drag Spacer         | BNT5380  | Drag Washer                 | BNT5944  | Screw                     |
| BNT2224  | Spool Tension Spacer (A) | BNT5383  | Line Guide Pawl             | BNT5945  | Clutch Cam Retainer       |
| BNT2396  | Roller Clutch Bearing    | BNT5386  | Ball Bearing                | BNT5946  | Clutch Cam                |
| BNT2717  | E Lock                   | BNT5409  | Drive Shaft Bushing         | BNT5947  | Clutch Plate              |
| BNT3208  | Star Drag Click Plate    | BNT5609  | Screw                       | BNT5948  | Screw                     |
| BNT4124  | Star Drag Spring         | BNT5640  | Screw                       | BNT5949  | Clutch Guard Assembly     |
| BNT4130  | Drag Washer              | BNT5641  | Handle Nut Plate            | BNT5950  | Frame                     |
| BNT4343  | Ball Bearing             | BNT5654  | Idle Gear                   | BNT5951  | Screw                     |
| BNT4631  | Idle Gear Pin            | BNT5659  | Idle Gear                   | BNT5952  | Screw                     |
| BNT4729  | O Ring                   | BNT5681  | Spring                      | BNT5953  | Clutch Bar Guide B        |
| BNT4863  | Star Drag Nut            | BNT5713  | Handle Knob Seal            | BNT5954  | Clutch Button             |
| BNT4868  | Key Washer               | BNT5714  | Screw                       | BNT5955  | Clutch Bar Guide A        |
| BNT4869  | Drive Gear               | BNT5723  | Washer                      | BNT5956  | Stabilizer Bar            |
| BNT4874  | Pawl Cap                 | BNT5729  | Washer                      | BNT5957  | Washer                    |
| BNT4886  | Clutch Pawl              | BNT5731  | Washer                      | BNT5958  | Spool Pin                 |
| BNT4932  | Click Spring             | BNT5742  | Washer                      | BNT5959  | Spool Assembly            |
| BNT5264  | Anti-Reverse Ratchet     | BNT5928  | Handle Nut                  | BNT5960  | Dial Case                 |
| BNT5271  | Pinion Gear              | BNT5930  | Cast Control Cap            | BNT5962  | Screw                     |
| BNT5308  | Washer                   | BNT5932  | Screw                       | BNT5963  | Washer                    |
| BNT5316  | Click Pin                | BNT5933  | Roller Clutch Inner Bearing | BNT5964  | Left Side Plate Cam Lever |
| BNT5319  | Bearing Retainer         | BNT5934  | Drive Shaft                 | BNT5965  | Left Side Plate Assembly  |
| BNT5320  | O Ring                   | BNT5935  | Screw                       | BNT5967  | Right Side Plate Assembly |
| BNT5327  | Idle Gear Spring         | BNT5936  | Level Wind Protector        | BNT5968  | Handle Assembly           |
| BNT5329  | Drive Shaft Retainer     | BNT5937  | Screw                       |          |                           |
| BNT5334  | Bushing                  | BNT5938  | Line Guide Assembly         | BNT4692  | B-100 Oil (Accessory)     |