



2024 S650 Darkhorse Mustang Front Splitter Installation

Components List:

- 1 x Front Splitter
- 1 x Long Splitter Rod Set
- 3 x 0.5" Aluminum Spacer
- 2 x 1.0" Aluminum Spacer
- 4 x M6 x 25mm
- 3 x M6 x 40mm
- 2 x M6 x 50mm
- 18 x M6 Big Washer
- 4 x M5 Big Washer
- 9 x M6 Nut

Approximate Installation Time:

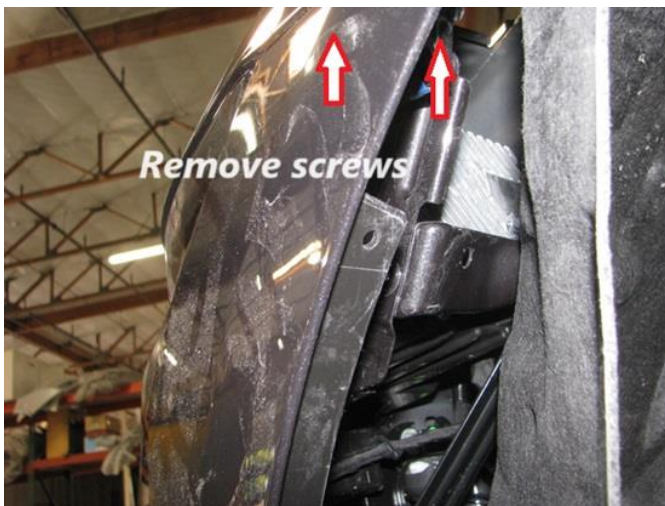
1.5 Hour



Installation Procedures:



1. Splitter installation requires front bumper removal.
2. Remove screws on top of the bumper.



3. Remove 2 screws from the fender to the bumper in the wheel-well. Repeat step to other side.



4. Remove all the screws on the undertray. Remove undertray completely.



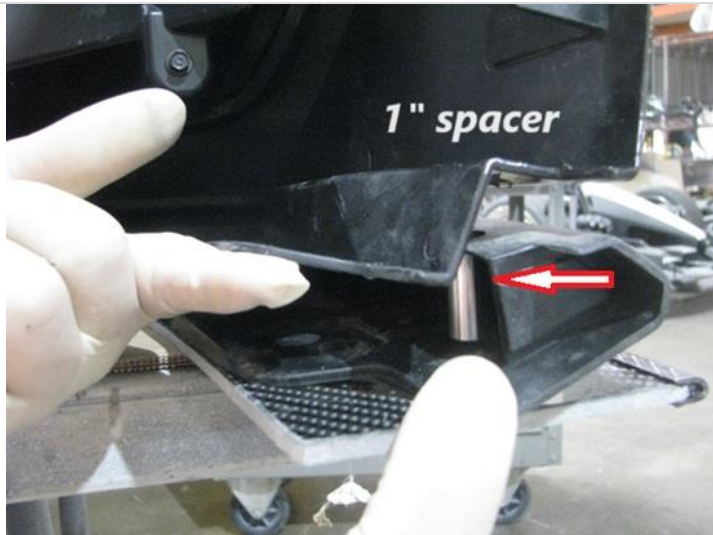
5. Remove few plastic tabs holding the airducts on left and right side. See attachment
6. Carefully pull the bumper off the vehicle.
7. Discount one wire harness on the bumper.



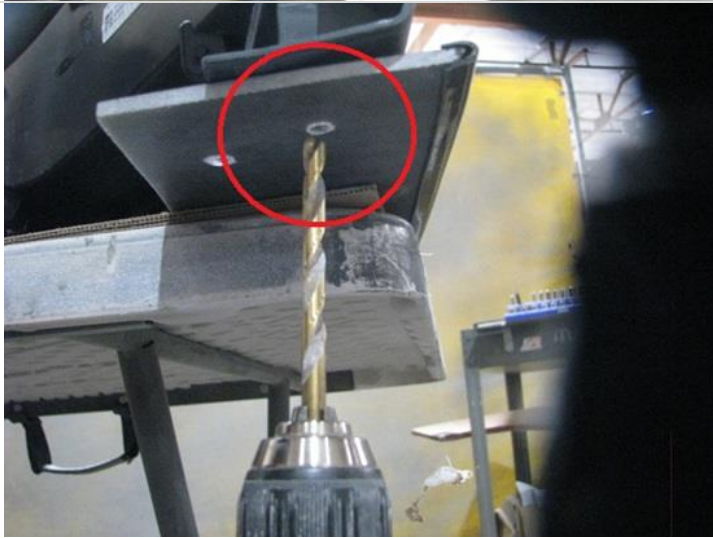
8. Place carbon splitter on the table.



9. Place complete bumper on top of the splitter. Line up both ends of pre-drilled on the bumper to the splitter.
10. Remove 2 plastic tabs on the each ends of the bumper.



11. Lift up the bumper from the bottom lip. Insert 1.0" aluminum spacer to the lip where the tab hole located.



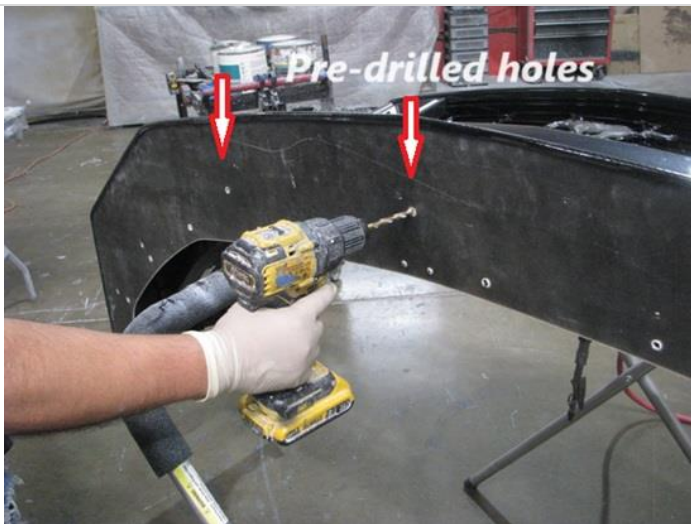
12. Use 1/4" drill bit to drill through factory lip where the aluminum spacer located. Use pre-drill hole as a guide. See attachment. Repeat step to other side.



13. Use supplied 50mm bolt, washer and nut to secure it.



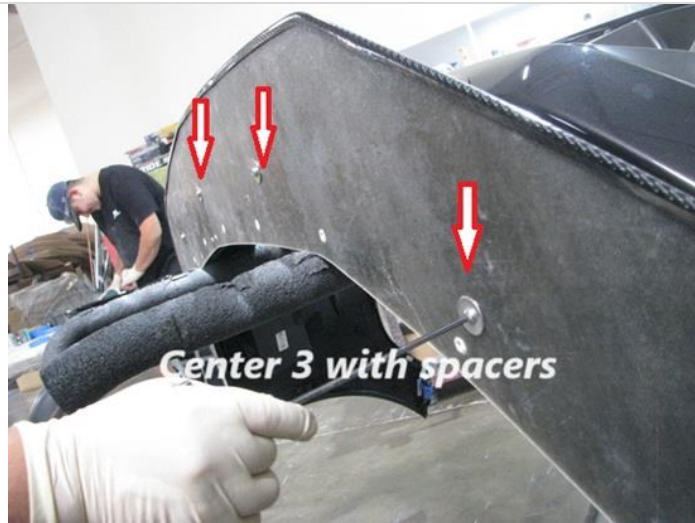
14. Here is how it looks from the top side after the hardware is installed. Repeat step to other side.



15. After locking down 2 ends. Stand the bumper up and drill all the pre-drill holes on the splitter to the bumper. Front leading-edge holes are the ones you need to drill. Back hole should line up with factory bumper holes.



16. Use 1/2" aluminum spacers, install them in between the bumper and splitter.



17. Only the front center 3 holes take 1/2" spacers. The side holes don't need it.

18. Make sure use 40mm for these 3 center holes. Secure them with washers and nuts.

19. Use 25mm bolts for rest of the holes.



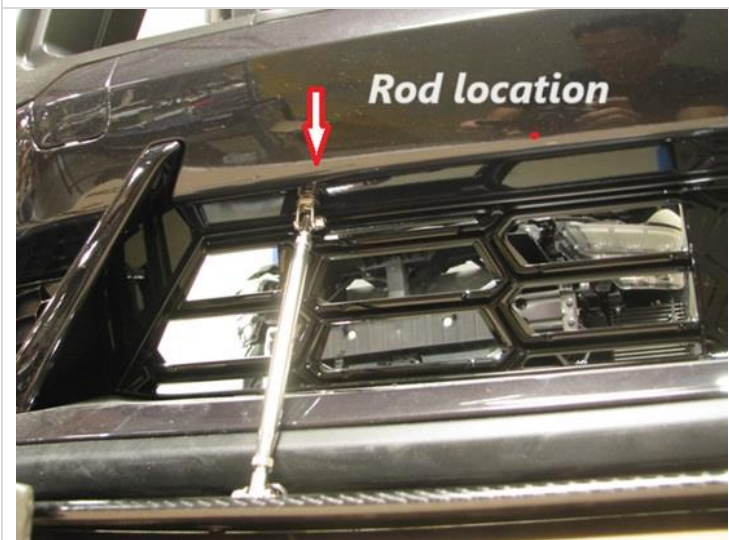
20. Remove plastic reinforcement beam on the bottom of the grill.



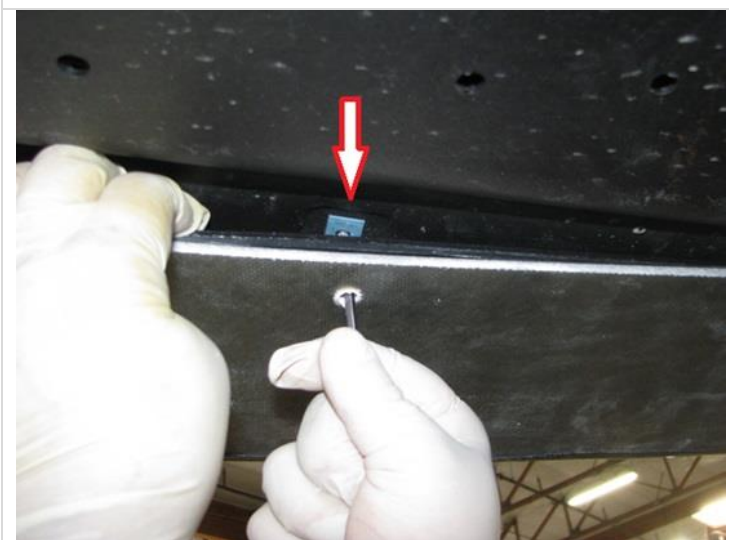
21. On each end of the grill, you should see a metal screw on it. Right in front of this screw is where you need to drill a hole for support rod to attach.



22. Use 3/16" drill bit to drill a hole on the bumper skin just in front of the grill. Repeat step to other side.



23. Install rod to the hole with washer and nut on the top.
24. Reinstall plastic beam and tabs back to the bumper.
25. Install bumper back to the car. Make sure to connect wire harness.



26. Reinstall under-tray back to the bumper, the tray sits on top of the bumper skin.
27. Before installing factory screws back to the tray, you need to align metal C-clips to the splitter holes and bumper holes by using Steel Scratch Awl or small allen key in this photo.



28. Reinstall factory screws back to the under-tray. You want to start from the outer end and work your way to the center section



29. Install rod ends to the splitter.
30. Reinstall all the factory hardware back to the bumper.

Now installation is complete