

# RWA 2022

## Welcoming

Over **89,000**

visitors to RWA in first 8 months of re-opening – an increase of **113%**

Nearly  
**5,000**  
under 21s visited galleries for free including **642** on self-led school visits

**24** Training sessions delivered for staff and volunteers including disability equality, deaf awareness, sighted guiding, dementia friends and autism awareness



After  
project

Before  
project



# Equality, Diversity and Inclusion

**57**

under-represented artists given free submission to Annual Open exhibition

**10 young people** (4 autistic, 1 ADHD and 4 from specialist provision not mainstream schools) attended Work Experience and obtained Bronze Arts Awards

**1244**

visitors on Free days

Global majority visitors increased from 3% to 8%. 16% of volunteers describe themselves as global majority compared to 3% pre-project. 12% of Artist Facilitators from global majority

**43**

excluded young people taken part in activities and visits

Monthly family friendly creative activities in four of Bristol's underserved areas (Hartcliffe, Southmead, Redcliffe and Easton) reached 80 disadvantaged families including Roma children aged 3 - 17



# Wellbeing

**82%**

of volunteers said they felt they were doing something meaningful and gave over 4050 hours of time. 116 volunteers undertook training including art handling, tour guiding and accessibility awareness.

**100%**

of community engagement reported positive outcomes ranging from developing confidence to feeling happier, improved self confidence and increased feeling of being valued

**72%**

of visitor surveys reported that mood was boosted or felt uplifted

# Engagement

**8000**

individuals took part in over

**260**

events and workshops during the project

L & I Community outreach involved **29** partners including:

**9** schools

**1** care home

**6** community venues and

**5** community groups

Over **200,000** digital engagements in past year

**Open Exhibitions**

**500** works exhibited in 169 Annual Open

**191** works sold

**5,000** individual entries to our 169 Annual Open and Photo Open



# Contribution to Local Economy

**£2.8** million spend in 2022 (£4.5 million in total)



Increase in RWA staff by **4 FTE**

Estimated **62** temporary FTE construction jobs created during 11 month building project

**New Spicer and Cole café**

**15** Artist facilitators recruited



Basis of Information: Over 1600 responses to surveys and feedback requests informed valuation  
Photography: Alice Hendy and Lisa Whiting  
Design: Eleanor Hardiman, Digital Content Curator, RWA



# RWA Empowering communities

# 1. Bristol Community Links (BCL)

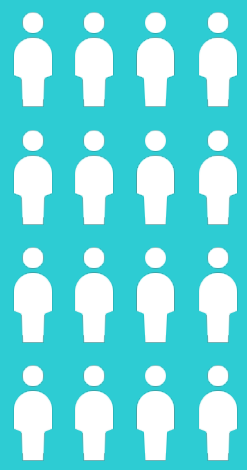
## Workshops leading to an exhibition at RWA

During 2021, RWA started work with both BCL South and North groups, made up of adults with multiple and complex needs ranging from deafness, loss of sight through to learning and physical disabilities and sensory needs.

The artist-facilitator facilitated a series of print workshops, working through play and self-expression to share her love of printmaking with vulnerable adults including a large-scale textile print of the architectural dome of the RWA

Extra sessions took place during February and March 2022 to bridge the gap between the workshops and the exhibition at the RWA.

A BCL exhibition was shown downstairs at the RWA and some work was displayed on a big screen of rolling images in the Family Room from April to July 2022.



16 participants



1 celebratory tea and cake session at the RWA



*"Sincere thanks for everything you are doing with the RWA to raise the status and visibility of disabled people, it is trailblazing"* Team Manager, BCL

*"...This felt like a breath of fresh air"* – Partner

*"I have loved this morning. I've honestly loved it – this has been brilliant. I've loved it"* Participant



The artist planned lots of differentiation to ensure that every person in the room could participate at some level and participants were challenged and able to learn new skills.

Collaborative neon pieces were created for the sensory rooms at BCL, made in UV paint so their lights make the colours dance.

Staff felt that all the intended outcomes for participants had been achieved:

- Boost self-esteem
- Feel valued and appreciated
- Increase sense of belonging
- Improved self-expression
- Learn something new
- Have abilities (rather than disabilities) recognised
- Feel safe and respected

*"I love the technique because it helped me move my hands to help my mobility...much more fun than doing exercises...."*

Participant with limited dexterity

*"One participant was in a wheelchair with very limited mobility was engaging through listening and talking but couldn't move so she held fabrics and wanted to take them home – she liked the feel and the stories...she loved just being in the room"* Facilitator

*Having the opportunity to visit and see their own work exhibited gave participants a sense of achievement.*

*"Inclusion is important – giving value to what has been created and who is creating it."*



# 1.

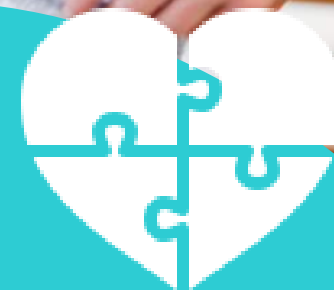
## Building partnership



“We wouldn’t have initiated this ourselves – the RWA brought the ability to commission and to find the right artist – it would have been too risky to do this ourselves – having the RWA as a partner makes this safer”

“I think the thing that comes across from the work we have done and the approach you take is that of genuine collaboration and a real good ethos behind what you are trying to do.”

BCL Manager



## Sustaining relationship

Members of BCL now feel comfortable to visit the RWA without being invited or pre-booking – the free Art passes (enabling free access at any time to the exhibitions in the Galleries) plus the new Changing Places toilet have all contributed to this being able to happen.

Staff at BCL South have continued to run weekly creative sensory sessions in the same room as the original workshops encouraging participants to draw pictures of what is important to them.

There will be a further exhibition at the RWA of photographs by Photographer Alice Hendy showcasing the brilliant and creative work by BCL members participating in portrait photography workshops.





# 2. Bristol Refugee Arts Collective (BRAC)

## Sound of the Earth exhibition

9 members of Bristol Refugee Arts Collective have learned through a series of 11 workshops during Autumn 21 about fundraising and the RWA collections, as well as developing art skills in sculpture, photography, painting and writing. Workshops were a mix of training and development, discussion and studio time.

The series of workshops culminated in participants displaying their own work in a special exhibition "Sound of the Earth" at the RWA during August/September 2022.

BRAC members were also given a code to submit their work for free for the RWA Annual Open Exhibition.



*"The Partnership has provided core resources to BRAC - planning and admin' tuition; physical work space; art materials; public exhibition space; publicity and promotion support. The project provided a very regular, safe and stimulating space to meet and work. This provided a friendly and rich experience, enjoyed and shared by BRAC supporters. The clear project structure provided an excellent direction and plan in general for BRAC artists. The Partnership has raised new ideas for the future, for example the possibility of a mentoring network between individual RWA members and BRAC artists. The possibility of future RWA +BRAC project is a source of excitement and hope."* BRAC Coordinator



The workshops and the exhibition brought a new diverse audience to the RWA, both as community partners and as visitors– below are a selection of comments from the visitor book.

*We see images on news flashes. I talk with my friends from all over the world. None of that or those images have quite moved me as much as those artworks. Thank you for sharing your thoughts in these beautiful + very skilled ways. It's a stunning exhibition, I look forward to next year's – hopefully upstairs?!*

*Your art is not only beautiful to look at, but gives glimpses of God-created individuals rather than groups/labels. Thank you*

*I am from Morocco and I came here to see many refugees' pieces of art and I am inspired and speechless about the Sana Elgoraish painting.*

*Hi I'm from Algeria I like this but specially the too that they are very on right they are so nice because they give us the real picture of the war and also the imagination.*

*Many thanks for sharing your perspectives. Fascinating!*

*Thank you for sharing your beautiful, thought-provoking artworks with us. We are all human and as Kurda Yar says 'there is no such thing as illegal immigration'. Please keep creating! Shukran!*

For this group the sense of community and connection and feeling of belonging was very important

***"You make me happy for this project. And, I remember for everything for painting, because always I'm at home." – Participant***

***"I love the workshop we did we did the photography and.....actually everything – that watercolour and yeah, it's very nice and I learn a lot." – BRAC member***

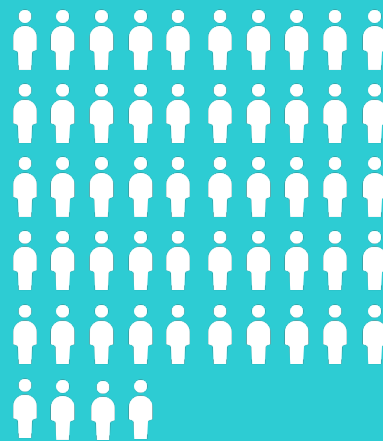


The group feel that it is very important to continue this relationship. For some individuals there is already a continuation, e.g. one member who was subsequently engaged as an artist-facilitator, but for others there needs to be further work to really develop a feeling of ownership and belonging which will lead to members sustaining their relationship with the RWA.

## People living with Dementia and their carers

From June 22, the RWA has programmed monthly Tuesday tea-time tours for people living with dementia and their carers and involves an hour looking round the gallery followed by an hour with tea and cake in a café atmosphere based in the Youngwood (Quiet) room. These sessions are free but had to be pre-booked and all were 'sold-out' These have been attended by 16 individual patients and

An artist-facilitator worked with a local care home to run 5 workshops for residents. In addition, our Head of Learning took the handling collection to the care home.



Attended by 16 individual patients and their carers (54 in total)



5 workshops for residents



*".....thank you for another lovely session. It really brings mum alive...." - Carer "Recently we both enjoyed going to the RWA to the Self Portrait session which we were invited to attend by Helen at the group. We used to enjoy going to art galleries and I wouldn't have thought of doing this with [Person Living with Dementia] as he is. However, it was a great afternoon - [PLWD] was very taken with the artist who covered himself in shaving foam!"*

Teatime tours carer



Participants, carers and care workers all reported on having learned from the sessions, enjoyed the sessions and an increase in wellbeing from the sessions.

*"I felt that all the residents were engaged in the workshop and thoroughly enjoyed themselves, as they frequently spoke of the experience afterwards highly, and expressed their interest in returning."* - Care Home Staff

*"What a triumph that people living with dementia are now welcome where they once saw a barrier – really beautiful to hear the difference the session made for them! My fingers and toes are crossed that these groups can continue as the feedback I've heard from people who have attending is wonderful."* Bristol Dementia wellbeing service

The elevation of being in the gallery has been very positive. Comments have been made about the importance of doing these tours when the gallery was open so that participants felt included as visitors.

## Building partnerships

Our Head of Learning and Engagement was presented with Bristol Dementia Action Alliance's Gold Award for the RWA for her work in establishing the tea-time tours.



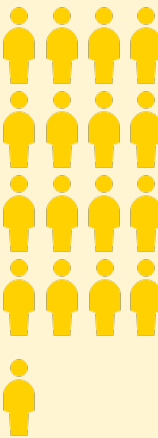
## Sustaining relationship

This work is now considered part of our 'core' offer and there is a specific fundraising programme to ensure that these sessions can continue indefinitely.

# 4. Happy Mondays

RWA partnered with Venturers' Academy (the first state-funded all-age specialist provision in Bristol for children with a primary diagnosis of Autism Spectrum Conditions) and Briarwood School to offer relaxed sessions for children with additional needs, enabling:

- A chance to extend learning opportunities from termly theme in an art context
- A greater understanding of why we have art galleries and their purpose
- An opportunity to visit a gallery and know that they are accessible to them and anybody that wants to visit
- Gain an understanding of all different types of art
- Gain an understanding of what it is like to be an artist
- Have the opportunity to use a range of materials to create different types of art



**17** school pupils with additional needs attended **9** Monday workshops. In addition, there were **4** family holiday workshops with **24** family



**1** internship for **1** autistic young person



**4** holiday sessions were also offered to families with children with additional needs

*"We've been to so many places that say they are for SEND children like H and they're not, they're too prescriptive and there are right and wrong ways of doing things. This is actually the best I've been to, you're really open minded. He can just be himself."*

Happy Mondays Family

*"We will be coming back, there's so much you're doing here."*

Happy Mondays Family

*"Thanks so much for a lovely morning this morning. R and I had so much fun! Mummy and daddy were very impressed with R's painting and collage. We look forward to seeing you at the next event."*

Happy Mondays Grandmother

# 4.

Inviting pupils into a public gallery space and allowing them to explore a new space was important and added an extra dimension which wouldn't have been achieved through a workshop in schools. This helped some pupils with anxieties about visiting new places as they were made to feel safe and their opinions were listened to.

## Comments from teachers:

- The chance to offer an enhanced learning experience to pupils
- Enabled students to experience seeing all different kinds of art in new environments
- Students experiencing an Art Gallery for the first time
- Improving ability to regulate with public areas
- Students had a great opportunity to immerse themselves in art activities in an artistic environment linking what they created with the gallery experience
- Exploration of different medias, looking at art work others have created. Being able and allowed to touch and feel
- Students showed developing pride and self-esteem
- Allowed everyone to feel free to express themselves emotionally in the workshops
- Support from others, social, emotional and mental health support by being able to freely move and engage



## Sustaining relationships

This work is now considered part of our 'core' offer and there is a specific fundraising programme to ensure that these sessions can continue indefinitely. There will be an exhibition of the pupils' own work created at the workshops at the RWA in Autumn 2023.

## Building partnerships

Venturers' Academy pupils were consulted on how to decorate the new Quiet Room, and also on ideas for the Family Room.

The children were shown a range of colours and the choice was based on which they were drawn to; which colours were calm and which helped them to feel relaxed; which felt warm and welcoming, and which were best to avoid sensory over-stimulation.



## 5. Work experience and Arts Award

During Summer 2022, **10** young people from **6** different schools attended a week-long intensive project. All of the students worked together as a group, supported by RWA staff and freelancers.

**4** of the students (at 3 different schools) are autistic, **1** has ADHD and **4** attend specialist provision not mainstream schools.

All 10 young people achieved the **Bronze Arts Award** which maybe for some their first and only qualification.

*"The portfolios were well-structured and full of challenge and rigour. They were neatly presented and showed that the young people had been given the freedom to pursue their own arts award journeys but still under your leadership and guidance. There was a lovely sense that the young people really enjoyed all of their activities. Every part had thought and purpose, and a good deal of reflection too."* Arts Award Moderator

*"This is amazing, thank you for the opportunity"* Teacher, Secondary School that caters for pupils aged 11-16 with Social, Emotional and Mental Health (SEMH) needs and associated learning difficulties



### The work experience included:

- Working with students and RWA staff from across Bristol
- Learning about History of RWA & current staff roles
- Learning about Marketing, Events Management, Learning & Participation
- Evaluating two visual art exhibitions
- Exploring RWA Permanent Collection
- Choosing a theme and content for a digital exhibition
- Writing interpretive exhibition text

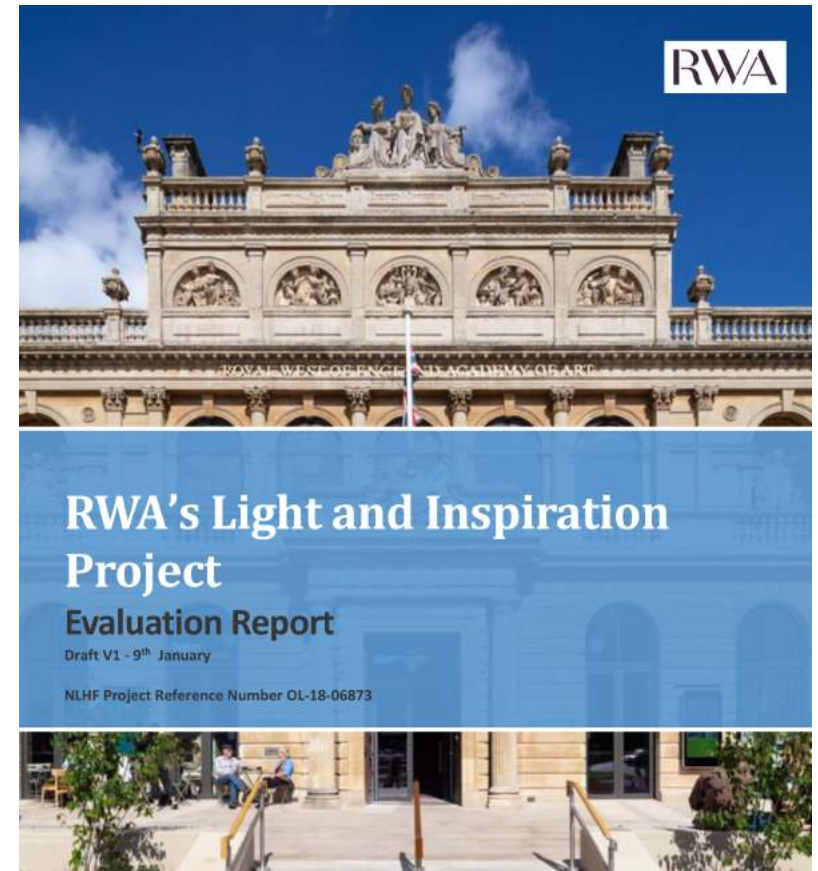
## Supporting material to evidence answers in application

All quotations, participant numbers and outcomes/impact have been taken directly from this evaluation report and appendices prepared by Melinda Humphrey and Laura Hetherington. The report was informed by over 1600 responses to surveys and feedback requests including community leader questionnaires (12) and interviews (5); interviews with artist facilitators (5); vox pops with exhibition visitors (20), and participant feedback.

*“Self-worth and sense of value and being connected have been strong outcomes, particularly through the RWA exhibitions and workshops in the Gallery”*

Laura Hetherington, Evaluation Consultant, Light and Inspiration project

Photographs: Alice Hendy  
Produced by Eleanor Hardiman, Digital Content Curator, RWA  
Icons: <https://icons8.com>



Supported by







**RWA**

Building partnerships and networks in Bristol's most underserved areas

[rwa.org.uk](http://rwa.org.uk)

# 1. Scribble and Sketch

## Hartcliffe & Southmead

(also held at Easton and Redcliffe but these have been established for considerably longer)

The Light and Inspiration project enabled setting up two new Scribble & Sketch venues in more areas of Bristol where engagement with the RWA is less likely – Hartcliffe and Southmead.

Scribble and Sketch is a programme of informal drop-in sessions for families in areas where they live. An activity is delivered by an artist-facilitator and the sessions supported by our Family Learning Assistant volunteers. Feedback from families shows that they enjoy the warm welcome, fun activities and friendly facilitators.

29

workshops  
involving up to

35

participants at  
each session

483

in total, with a  
mix of returning  
participants  
and new  
participants  
across the two  
new venues.



*"This is our first time coming to Scribble and Sketch. We don't live that near, we live in Hengrove but we had to come to Hartcliffe to find something for us to do for free as a family."* Mother, Grandmother and young boy aged 2

*"I can't believe you've come down here. Nobody comes here."* Head of Hartcliffe Nursery and Children's Centre

*"We come to Scribble and Sketch regularly. There are not many activities around here for families and a lot of them you have to pay for. It's great for us, coming to this country from Europe, to have free things to attend. We really want our children to have opportunities to do lots of things outside of school."*

Mother and two young girls aged 3 +6)



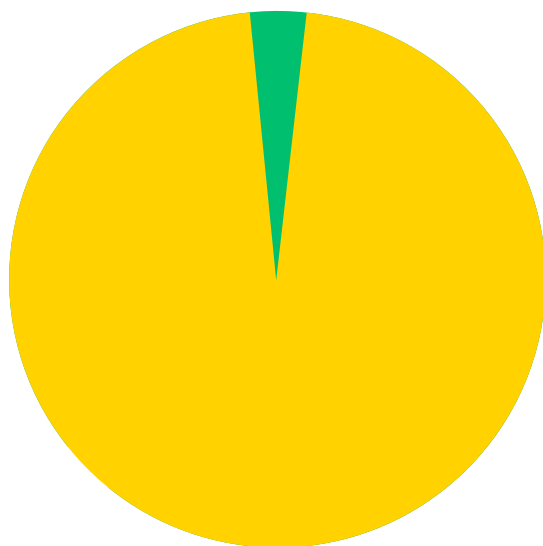
# 1.

## Outcomes:

- More and a wider range of families in disadvantaged areas engaged with the RWA
- Families enjoyed creative activities and engaged with art

Participants were asked to respond to questions with smiley faces with the following results:

### How much did you enjoy the workshop?

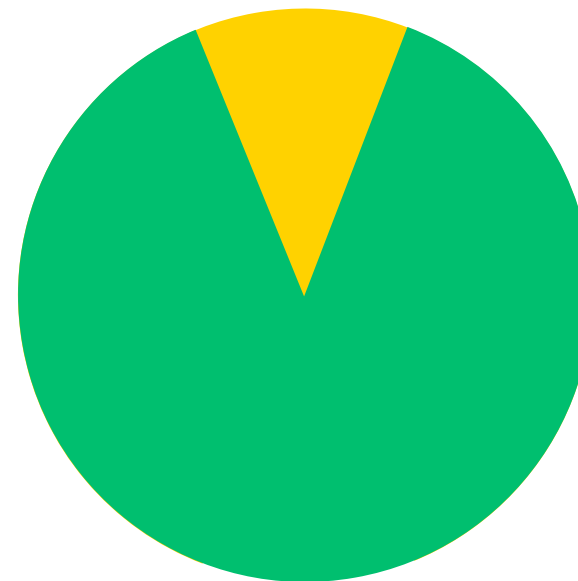


● Happy 110   ● Neutral 4   ● Sad 0

*"Fun and friendly atmosphere. Everyone is super supportive, and so rewarding to encourage and support young minds."*

S+S Volunteer

### How creative do you feel now?



● Happy 99   ● Neutral 13   ● Sad 0

## 2. Roma youth group including Pewter casting session

Initial pilot workshops were held in 2019 and it was hoped that it would be possible to build trust further with the community and offer a programme of creative sessions purely for Roma youth. This proved difficult for a number of reasons, including the loss of the space where the group had been meeting and change of youth leader and artist-facilitator. However 10 sessions did take place with on average 6-8 participants.

A one-off workshop was organised for a mixed group of 16 young Roma people with a sculptor who facilitated a pewter casting workshop. This workshop was very different, using tools and trusting the young people to use them responsibly. This workshop was the most successful with this group and offers some insight into what sort of activity will engage them in the future.

*"They all wanted to do it right. Across the group, that was interesting, they all really wanted to do it right even when they were rushing."* Artist-Facilitator

*"I've worked with them for 3 years and I've never seen them stay that focused. 1+1/2 hours is unheard of for them to be engaged. Thank you so much, it was so good to see."* Youth Worker



# 3. Pop Up Exhibitions

Varekai ('Wherever')

Six in total (3 in Autumn 21)

The RWA has a collection of some 1600 artworks. Whilst the building was closed for renovation, we took a selection of 9 vibrant and colourful art works from our permanent collection to 6 community venues across Bristol. Alongside the Pop-Up Exhibitions we delivered two workshops led by an artist for the local community to engage people with creativity and art history, and to respond to the paintings on show.

At each space we installed and left behind a subtle track-hanging system for community venues to use for their own exhibitions in the future.



*'The Pop-up exhibitions explored our relationship with landscapes, both real and imagined, along with some of the people that inhabit them. Lockdown left us longing to be near loved-ones, aching for far off places, dreaming about travelling and being somewhere other than in our rooms, our flats or our houses. This exhibition of paintings drew us into worlds we hadn't been able to access for a long time. Two of the interpretation panels mentioned aspects of RWA heritage, including having a long history of exhibiting landscapes, Ellen Sharples, women artists, through to the sort of work that is shown in the galleries today.'*

Head of Learning & Engagement, RWA

# 3.

## Exhibitions were held in:



### St Paul's Learning Centre October 21

This is a vibrant community hub in the heart of Bristol hosting learning and support opportunities, creative activities, meeting rooms and community activity. As well as courses running and rooms for hire, the community centre is home to a number of tenanted offices with a focus on social impact organisations, service providers and education in the community.



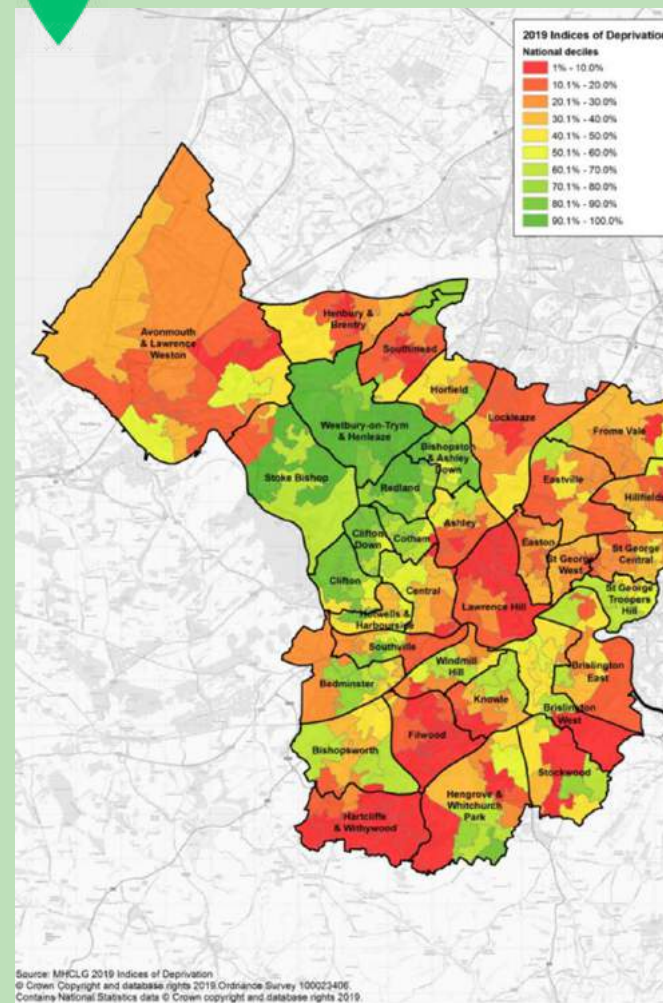
### Wellspring (Barton Hill) Settlement November 21

There is high social rented housing, and significantly high overcrowded households. The population by ethnicity is 59.6% Black and Minority Ethnic. RWA Learning team has worked with Dhek Bhal at Barton Hill Settlement over the past two years.



### Greenway Centre, Southmead - December 21

The Greenway Centre supported 1145 people with prescriptions, food, befriending or calls during the Covid-19 pandemic. The centre has a gym, café, meeting rooms. It looks after a youth centre and adventure playground that get good use. To date there has been little or no visual arts provision.



There are **34 Lower Super Output Areas (LSOAs) in Bristol in the most income deprived 10% nationally**; of these 17 are in Bristol South, 11 are Inner City, 4 in Bristol North and West (Outer) and 2 in Bristol East. In all these areas more than a quarter of residents are income deprived. **The most recent census was done in 2019 as shown below.**