

Access Guide

Outside access - Main Entrance

- There is level access into the venue
- There is one disabled parking space. This can be booked in advance of your visit by calling 0117 906 7632 or emailing info@rwa.org.uk and is subject to availability.



Ground Floor

Front door

- There is a push button to the left of the main entrance



Foyer

- There is seating in this space. The Welcome Desk is on the right.



Ground Floor

Welcome Desk

- This area is on the right as you enter the building
- Staff are present in this area to welcome you



Retail Shop

- This area is on the left as you enter the building



Ground Floor

Cafe

- Food and drinks are ordered from the counter



- The photo below shows the quieter area of the cafe

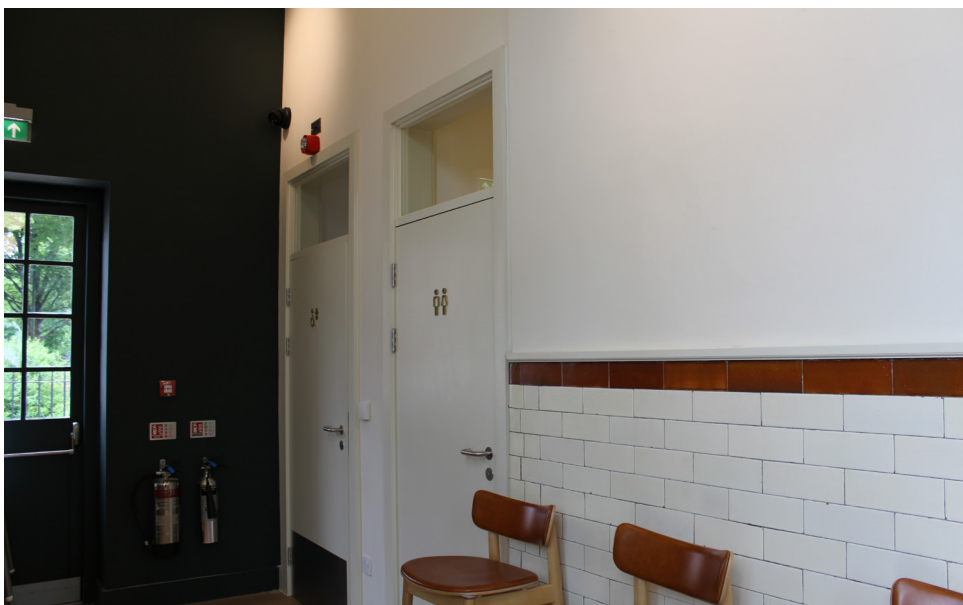


- The photo below shows the outside seating for the cafe



Cafe

- Toilets are located on the left as you enter the cafe from the shop



Cafe

Ground Floor

- The photo below shows the accessible toilet in the cafe



- The photo below shows the lift in the cafe



Lift

- All floors are accessible via the lift



Stairs

- The stairs do not have continuous handrails
- There are 33 steps up to the first floor



First Floor

First floor Foyer

- There will be a member of staff or volunteer here to take your exhibition ticket and assist you
- Foldable stools are available here



Kenny Gallery

- This space can be reached directly via the lift
- This is a free to access space



Drawing School Studio

- This space is used by the Drawing School for workshops and activities



Balcony

- This space is accessed through the doors in the upstairs foyer
- Please use this space with caution as the floor is uneven
- There is a ridge at the bottom of the door frame



Gallery Spaces – Sharples Gallery

First Floor

- This space includes some seating
- Folding stools are available if you need a portable seat
- A staff member or volunteer will be present in either the main gallery or side galleries



Gallery Spaces – Methuen and Stancombe – Wills

First Floor

- These side galleries are lit darker than the main gallery



Lower ground floor

Down the stairs by the Welcome Desk

- This space is on the left as you come down the stairs, this space leads to the Family Activity Space, Accessible toilet and Changing Places Facility



Link Space

- This is a free to access space
- There are steps or a lift to access this space



Lower ground floor

Family Activity Space

- This is a free to access space
- This space can be reached directly via the lift
- This is an unsupervised area and is checked semi-regularly



Lower ground floor



- The picture above shows the lift
- The picture below shows the door to the Changing Places Facility



Lower ground floor

Changing Places Facility

- This facility can be accessed with a RADAR key. There is one RADAR key available at the Welcome Desk



Toilets

Accessible toilet with baby change facility located near the Family Activity Space

- Seperate men and women's toilets located near the stairs on the lower level

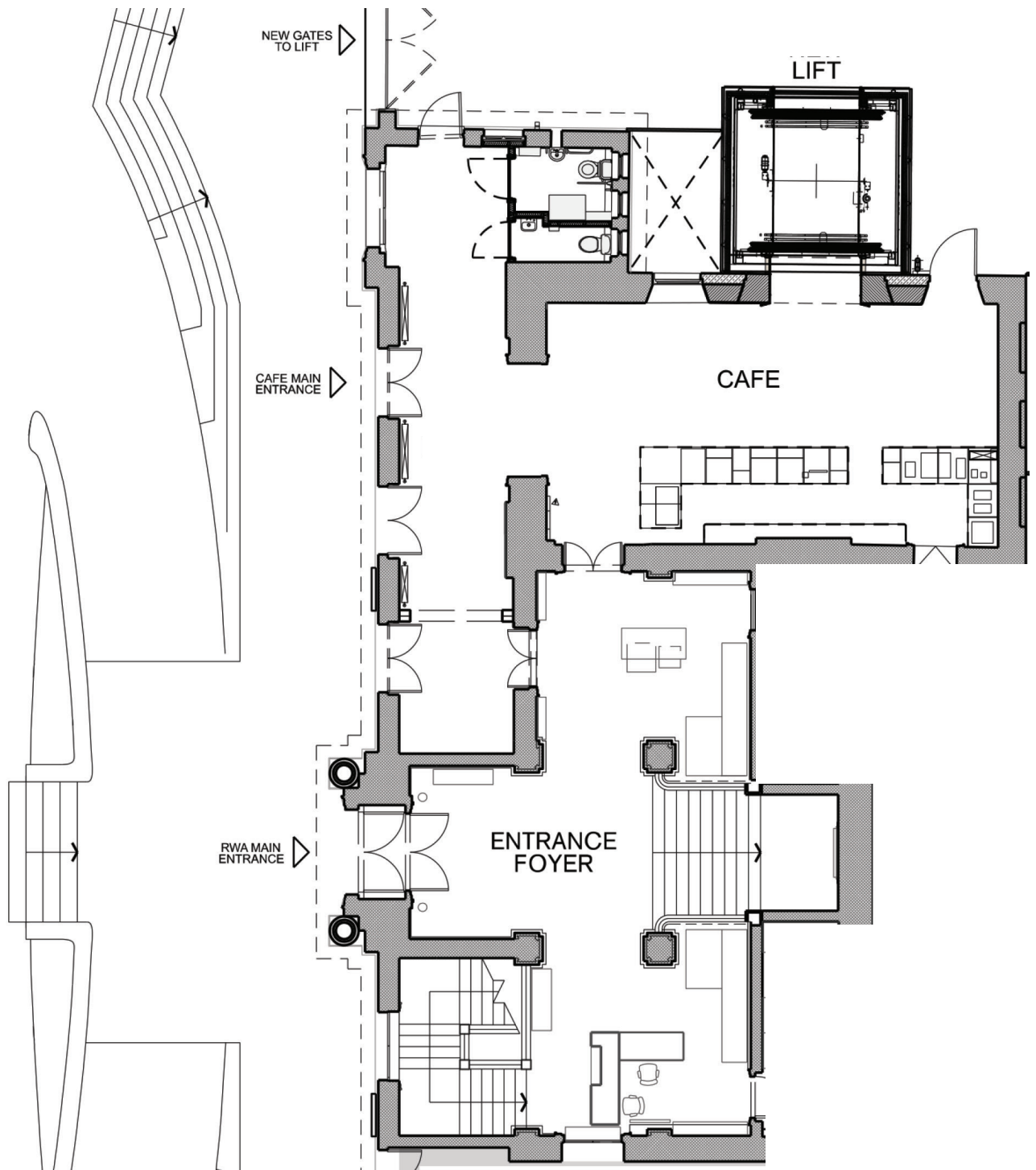


Resources at the Welcome Desk

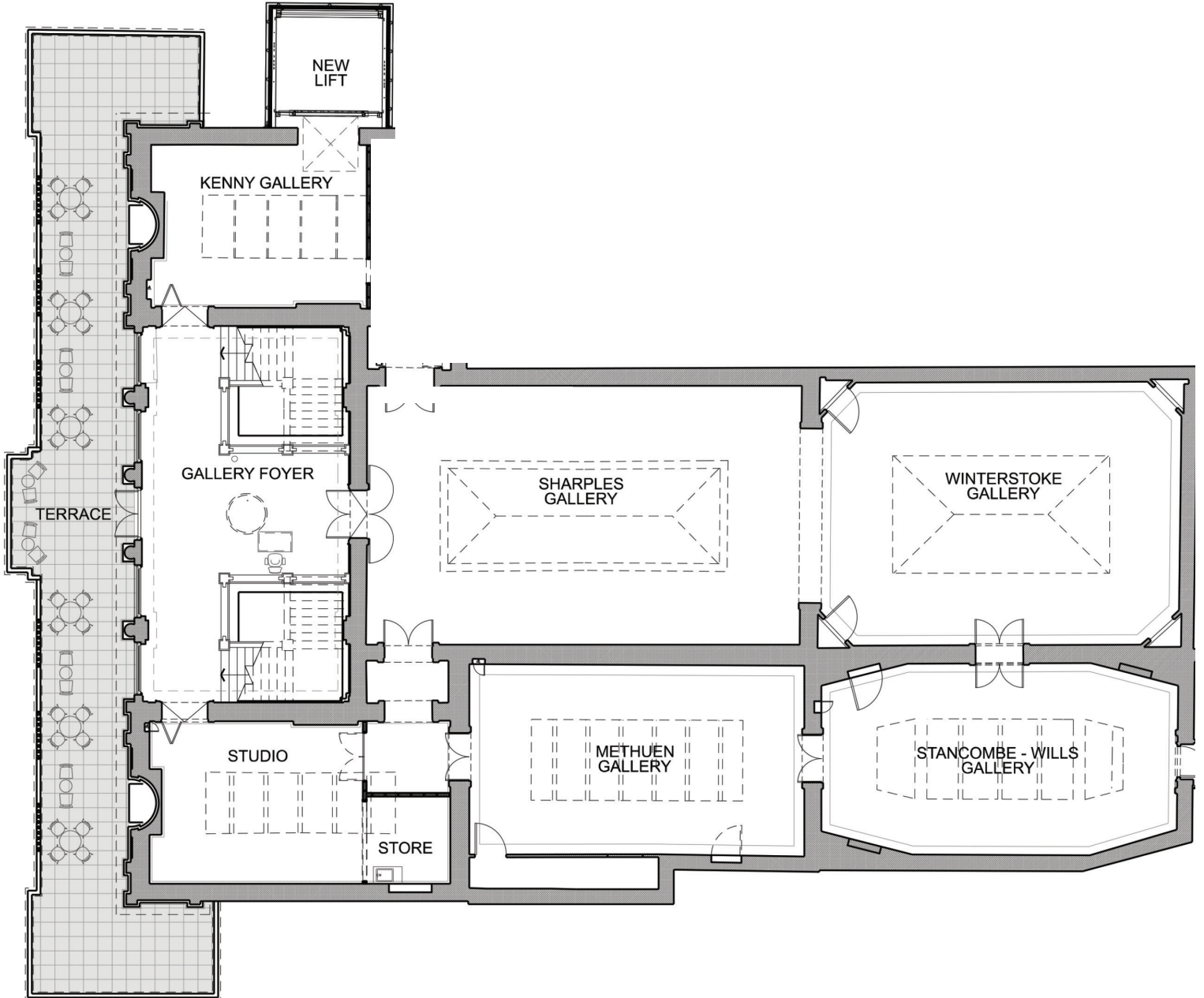
- Sensory pack and Activity trails



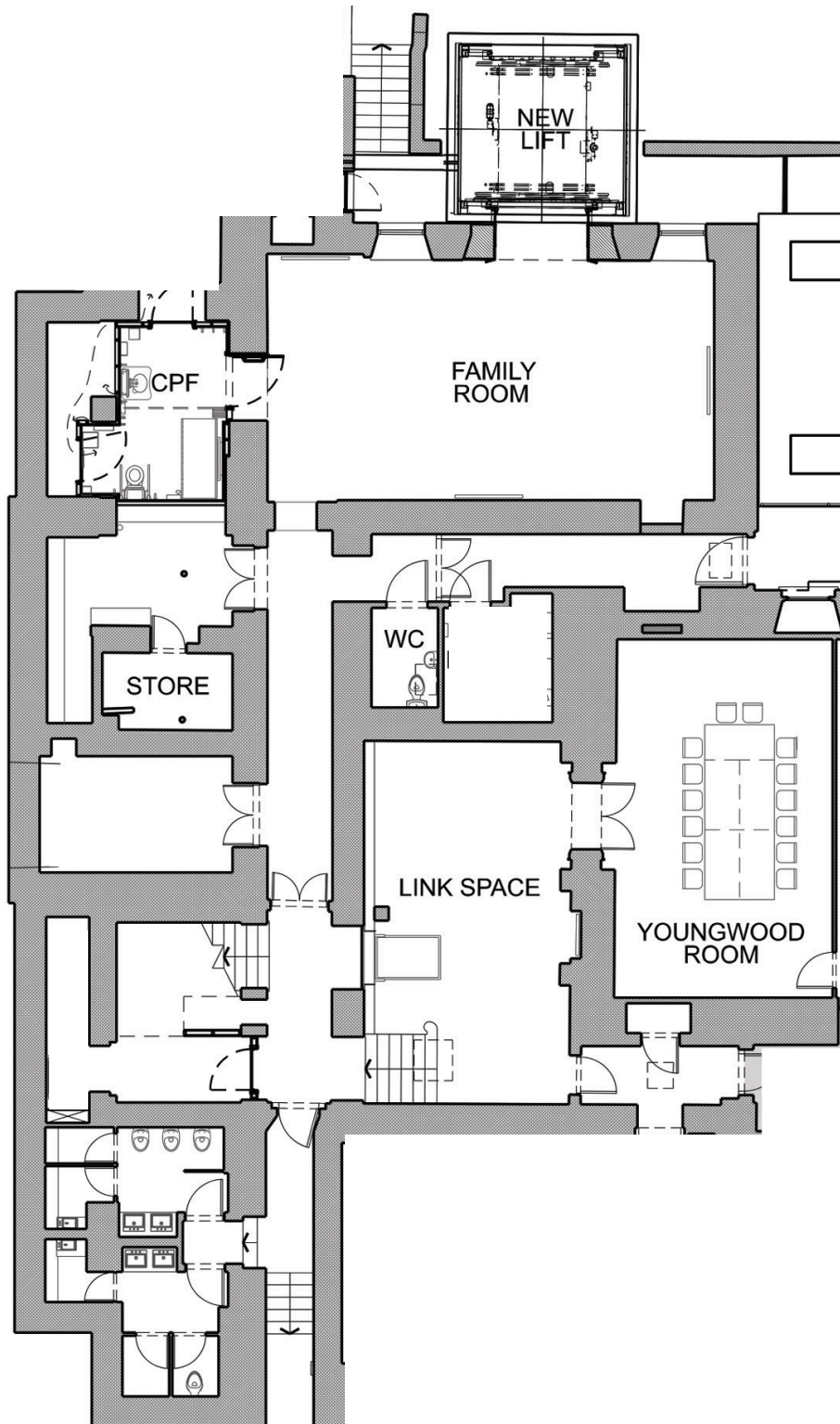
Ground Floor



First Floor



Lower Ground Floor



Additional Information

- At the welcome desk there are
 - Happy Packs (sensory bags with puppet/ear defenders etc)
 - An adult wheelchair for loan
 - Large print brochure
- The Quiet Space in the Youngwood Room can be booked for 1 or 2 hours. Please contact helen.jacobs@rwa.org.uk with QUIET ROOM in the subject line stating your requested visit date and time. You are welcome to turn up for your gallery visit and ask at the Welcome Desk if the Youngwood Room happens to be free. If it is, you can book it there and then.
- Staff, Volunteers and freelance artists across the RWA have completed a number of training sessions with the following organisations, with members of the Front of House team being consistently present for
 - Disability Equality Training with WECIL (West of England Centre for Inclusive Living)
 - Deaf Awareness training with Signingworks
 - Sighted Guiding training with Guide Dogs UK
 - Dementia Friends Training with Bristol Dementia Action Alliance
 - Autism Awareness Training with Venturers Academy