

TRACING PAPER LANDSCAPES

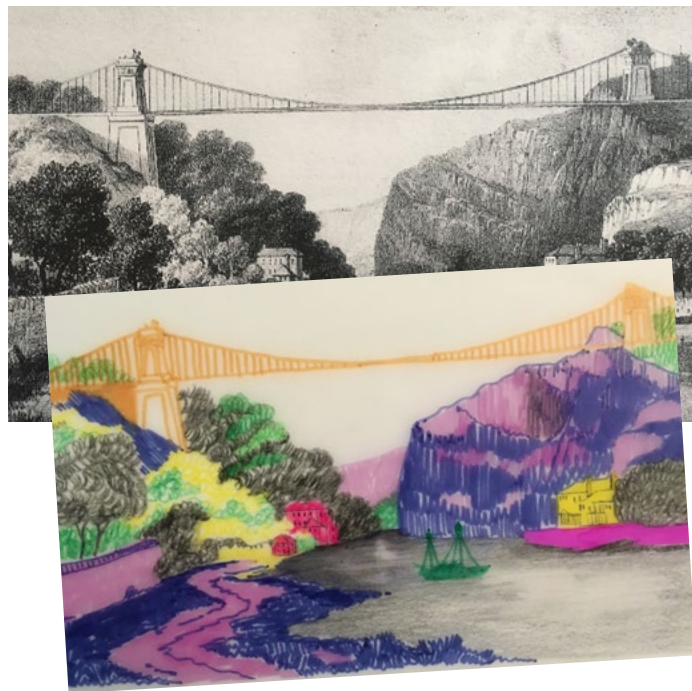
Scribble
&
Sketch 



Artist: Abigail Reed

This is a drawing exercise for older kids (6 and above) to loosen rigid thinking about landscapes and colour. We will try out abstract colours and different mark making with felt tips and pencils to create a vibrant landscape.

ABSTRACT; relating to or denoting art that does not attempt to represent external reality, but rather seeks to achieve its effect using shapes, colours, and textures.



Materials

A landscape image to trace over (you could print out the one provided or find one in a newspaper or magazine), tracing paper, a pencil, colouring pencils, felt tip pens.



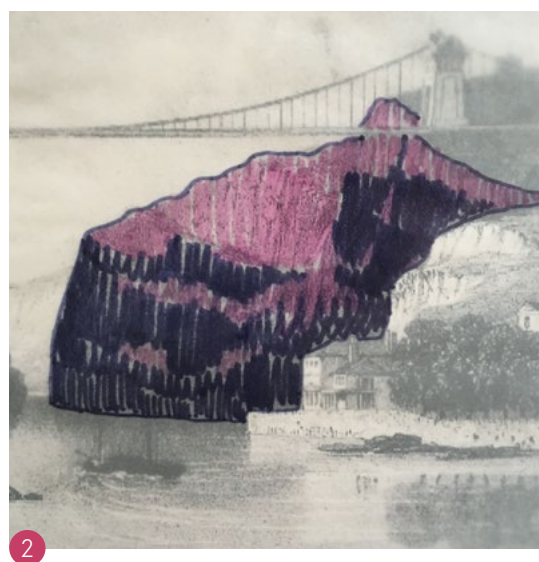
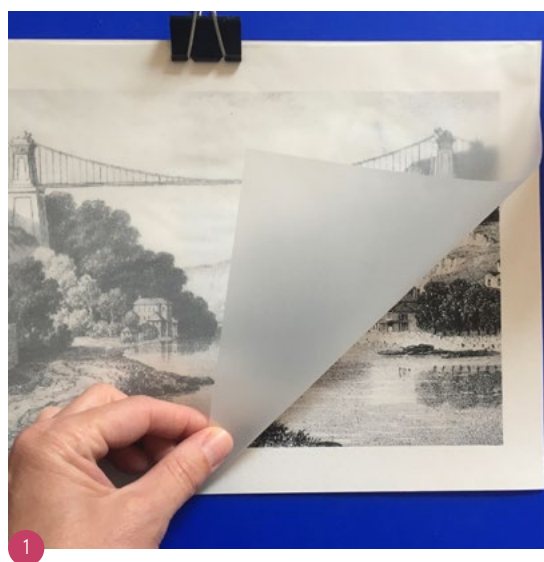
Instructions

Step 1. Place the tracing paper over the chosen landscape. Fix in place using either a bulldog clip, paper clip or a bit of tape.

Step 2. Try picking colours that are different to the real life landscape. I am starting with the rock face using blue and pink. I am using quite rough marks that will follow lines in the rock... just keep drawing over the marks that you can see through the tracing paper—be bold!

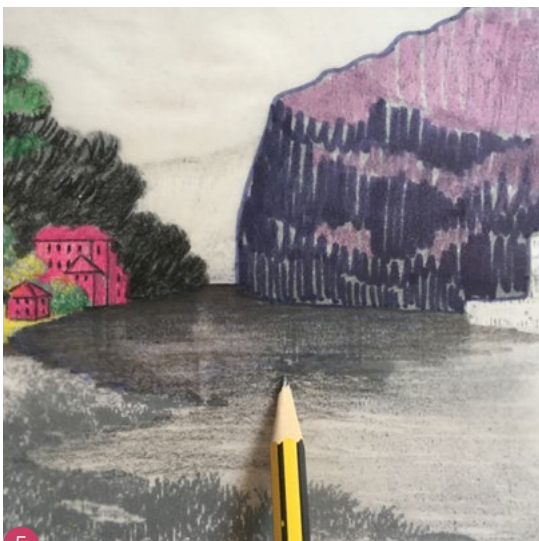
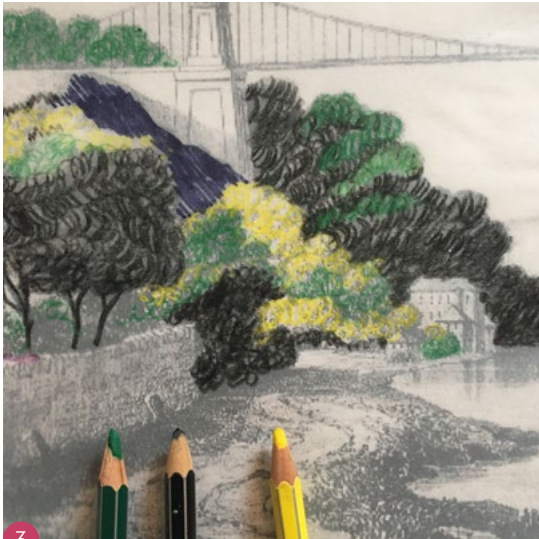
Step 3. I am picking green, yellow and black to represent the foliage. To add movement to your drawing, keep changing the direction of the marks you are making to give the effect of trees blowing in the wind.

*continued on
page 2*



Tracing paper landscapes (continued)

Scribble
&
Sketch 



Instructions continued from page 1

Step 4. Pink for the house-this is to help it pop out and be noticed. Some minimal black lines for the windows will help add detail.

Step 5. I am going to shade in the water in pencil. Press harder where the water appears darker and keep the pencil moving in the same direction to create a smooth surface. You could use an eraser to make it lighter where it needs to be-this gives the effect of light reflecting of the water's surface.

Step 6. Another house, this time it's yellow another vibrant colour to help its pop out!

Step 7. Keep lifting the tracing paper away from the landscape underneath so you can check how the finished drawing will look.

*continued on
page 3*

Tracing paper landscapes (continued)

Scribble
&
Sketch 



Instructions continued from page 2

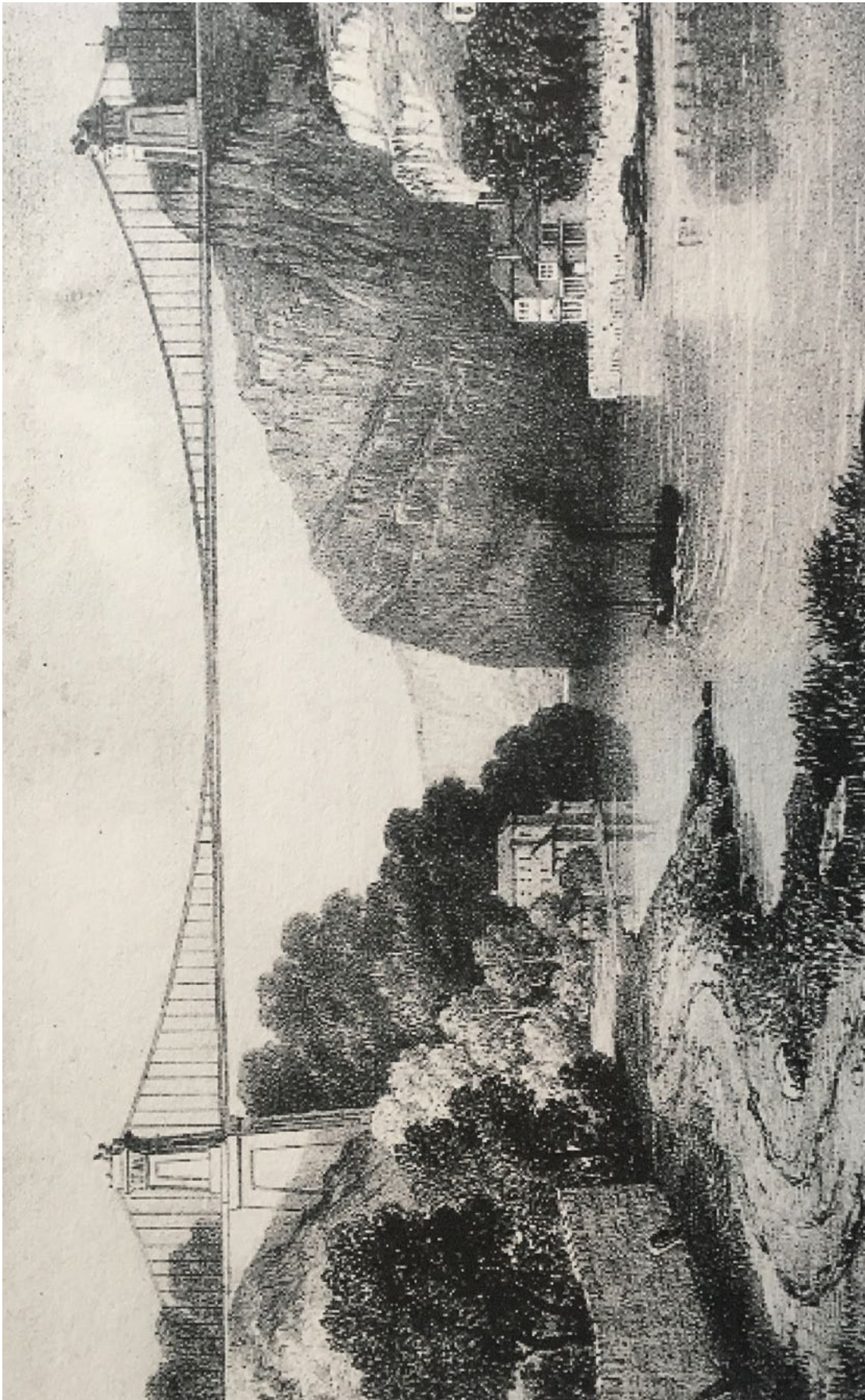
Step 8. Decide on a bright colour for the bridge and don't forget the detail!

Step 9. I am drawing in my pathway, that is in the foreground of the picture, in black and pink (two contrasting colours) that will draw the viewer into your landscape drawing. Pay close attention to the direction of the marks you make—you want the path to wind into the picture drawing you in.

Step 10. I am now adding the boat detail in using a ghostly green.

continued on page 4

Tracing paper landscapes (continued)



*Scribble
&
Sketch* 