

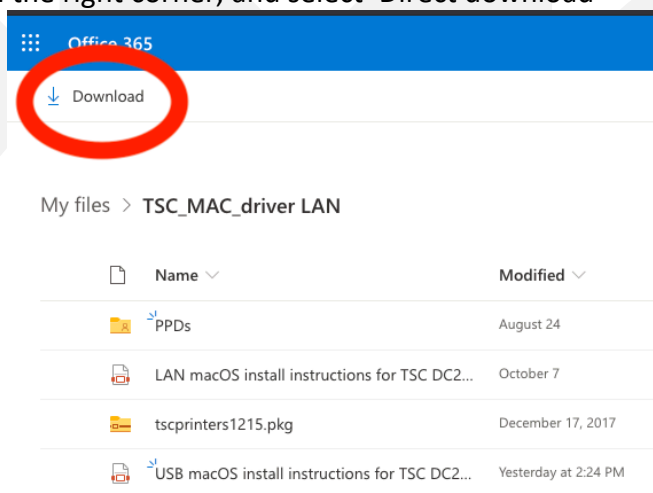
macOS install instructions for TSC DC2900 LAN label printer

Step 1: Following a restart; download the latest drivers.....	1 -
Step 2: In your downloads folder.....	1 -
Step 3: Unbox and connect the printer to your network.....	2 -
Step 4: Install the labels	2 -
Step 5: Locate the printer's address on your network.....	4 -
Step 6: Install the printer:.....	4 -
Step 7: Add the correct label size	7 -
Step 8: Go print a label.....	9 -

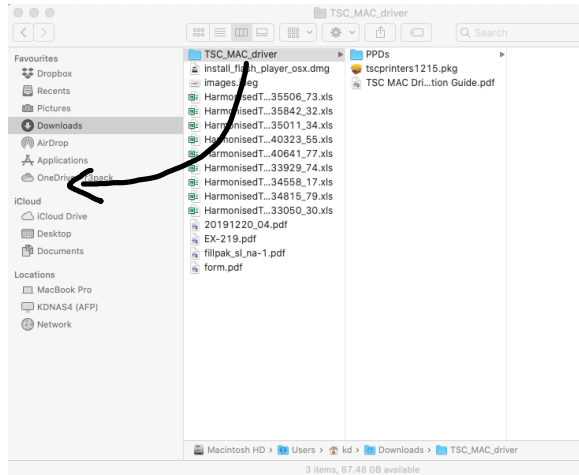
We have had support calls where a partially stuck or incomplete install of another program prevents the steps below being followed correctly. As such, we highly recommend that you save your work, close your apps, and restart your mac before proceeding.

Step 1: Following a restart; download the latest drivers from our OneDrive link: <https://bit.ly/38i1EGv>

Click on the Download box in the right corner, and select 'Direct download'



Step 2: In your downloads folder, click on the 'TSC_MAC-driver' folder, and drag and drop it to your Applications folder.



Step 3: Unbox and connect the printer to your network.

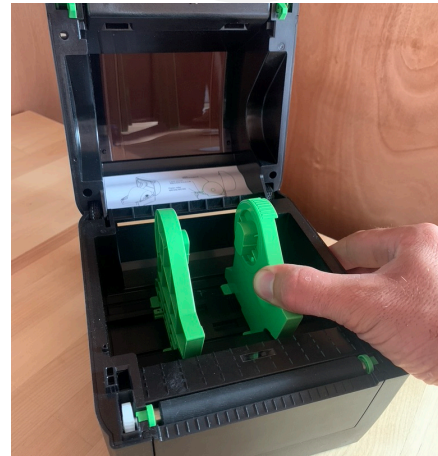
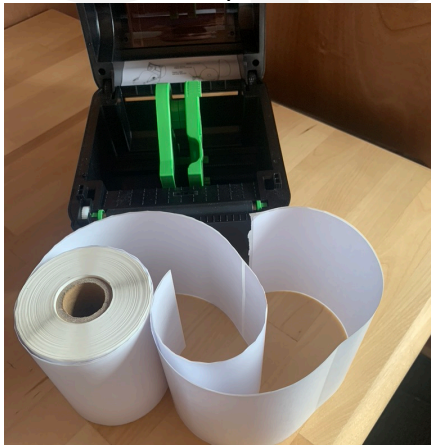
1. Connect power
2. Connect the LAN port on your printer to your network, using a standard LAN/patch cable.
Note that on the rear, there is a power switch.

Step 4: Install the labels

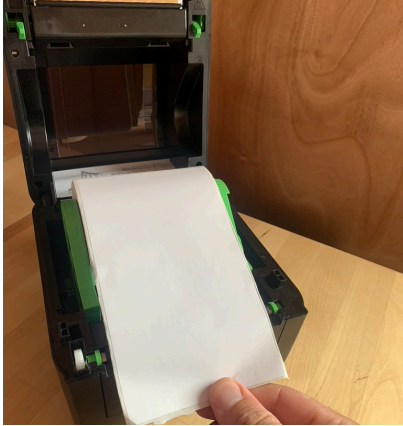
Labels should be installed as well, note to remove the sticker from the label roll, unravel the roll a little so that you can install the roll in a way that the labels are on the top (the printer will print on the top so you can see the label as it comes out)

See next page for images of installing labels:

1. unravel the roll a little so that you can install the roll in a way that the labels are on the top
2. Use your thumb to pull the right side away – making space to install the roll:



3. Install the roll, so the label is on the top (and you are looking at the label)



4. Close the lid firmly with part of the first label sticking out.



5. Push the feed button on the lid – and the machine will detect the labels and move to the start of the next label:



r3 p r c k

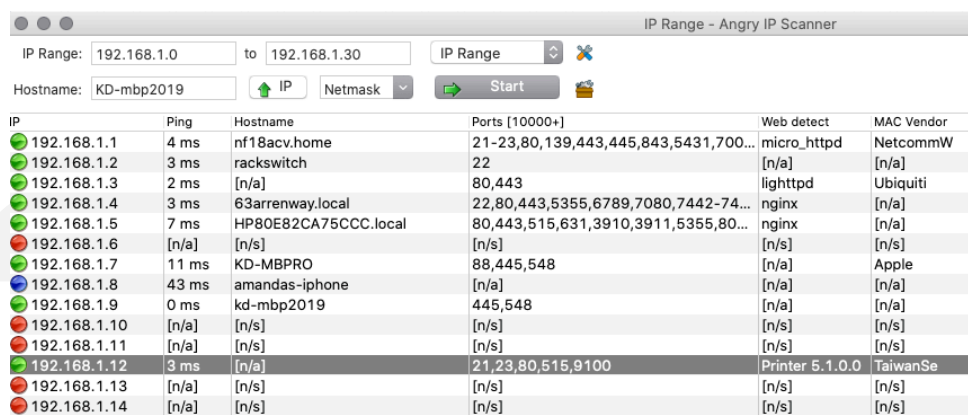
Step 5: Locate the printer's address on your network

This step is unique to every environment; however, it involves knowing some basic things about your network – or involving an IT person that can help:

The printer is set to DHCP Auto by default, that means in most networks it will be assigned an IP address by your router.

Here are some options to find your printers IP address:

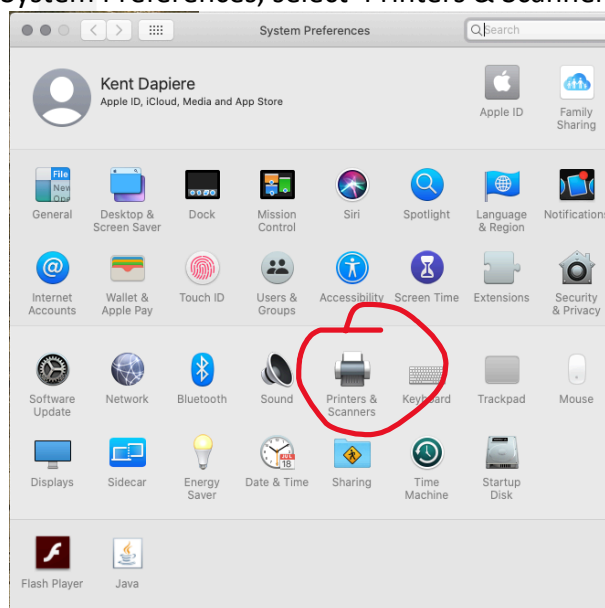
1. Log in to your router, find 'attached devices' and locate the printer's IP address.
 - a. In the list of devices, it will be called 'PS-80xxxx' or similar
2. Use an IP scanning tool to scan your local network for devices to locate the printer
 - a. A versatile free one called Angry IP Scanner: <https://angryip.org/download/#mac>
 - b. A DC2900 is selected in the list below:



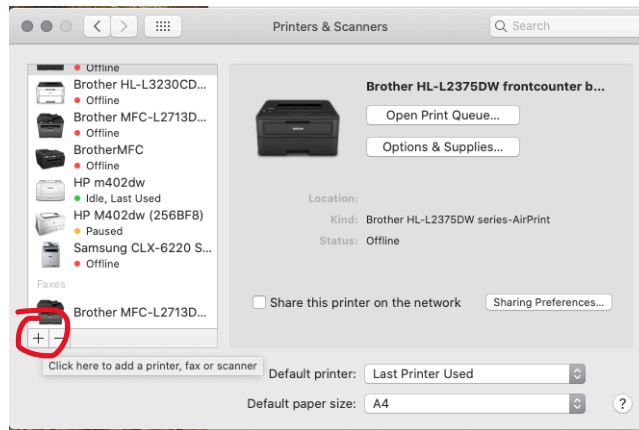
IP	Ping	Hostname	Ports [10000+]	Web detect	MAC Vendor
192.168.1.1	4 ms	nf18acv.home	21-23,80,139,443,445,843,5431,700...	micro_httpd	NetcommW
192.168.1.2	3 ms	rackswitch	22	[n/a]	[n/a]
192.168.1.3	2 ms	[n/a]	80,443	lighttpd	Ubiquiti
192.168.1.4	3 ms	63arrenway.local	22,80,443,5355,6789,7080,7442-74...	nginx	[n/a]
192.168.1.5	7 ms	HP80E82CA75CCC.local	80,443,515,631,3910,3911,5355,80...	nginx	[n/a]
192.168.1.6	[n/a]	[n/s]	[n/s]	[n/s]	[n/s]
192.168.1.7	11 ms	KD-MBPRO	88,445,548	[n/a]	Apple
192.168.1.8	43 ms	amandas-iphone	[n/a]	[n/a]	[n/a]
192.168.1.9	0 ms	kd-mbp2019	445,548	[n/a]	[n/a]
192.168.1.10	[n/a]	[n/s]	[n/s]	[n/s]	[n/s]
192.168.1.11	[n/a]	[n/s]	[n/s]	[n/s]	[n/s]
192.168.1.12	3 ms	[n/a]	21,23,80,515,9100	Printer 5.1.0.0	TaiwanSe
192.168.1.13	[n/a]	[n/s]	[n/s]	[n/s]	[n/s]
192.168.1.14	[n/a]	[n/s]	[n/s]	[n/s]	[n/s]

With the IP address of your printer (for this manual's case: 192.168.1.12)

Step 6: Install the printer: In System Preferences, select 'Printers & Scanners':



Click the + (add) to set up a printer:

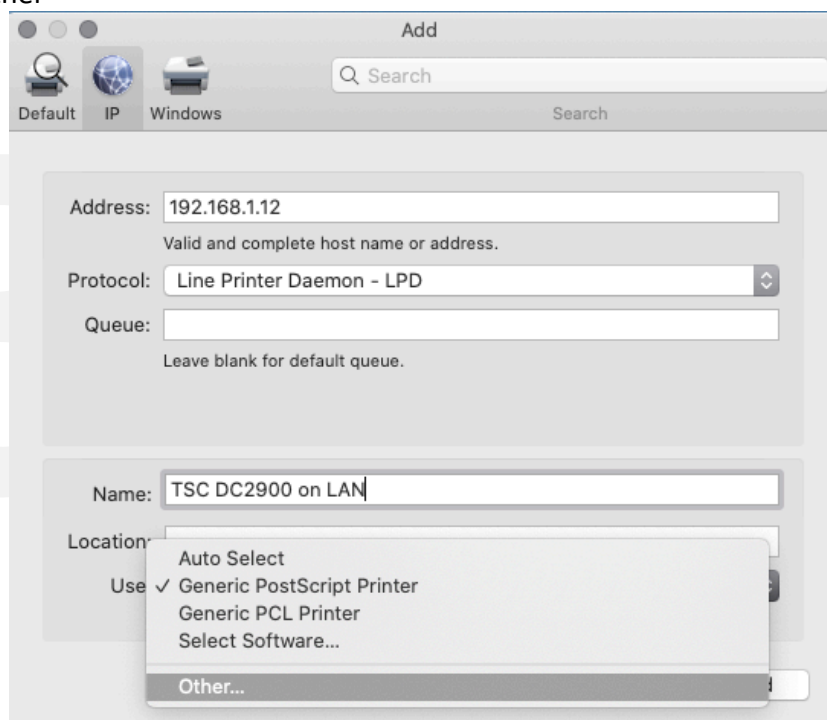


Select the 'IP' tab, and enter the IP address found for the printer.

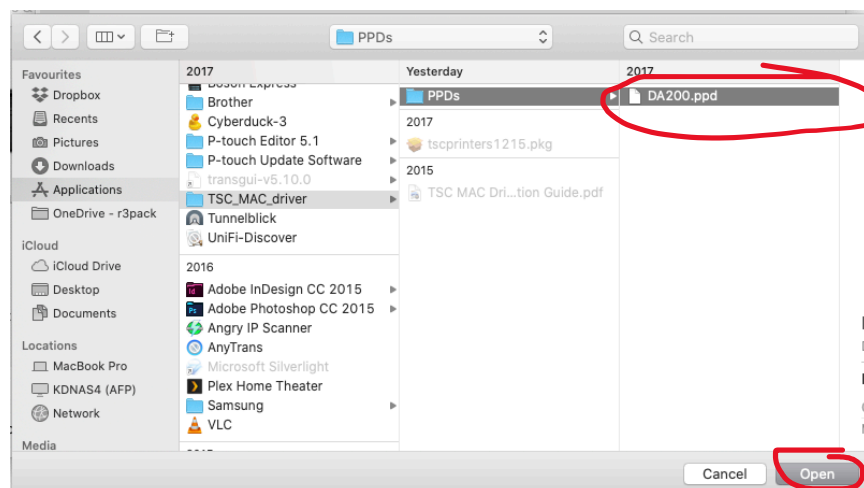
Protocol: Line Printer Daemon – LPD

Name: Call it something you will recognise the printer.

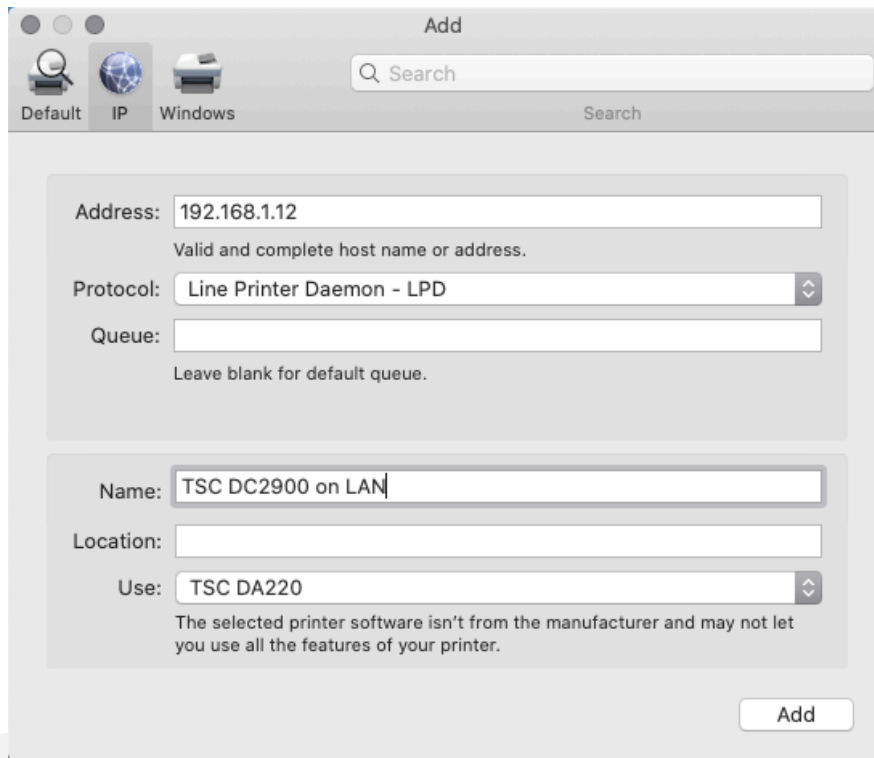
Use: Select 'Other'



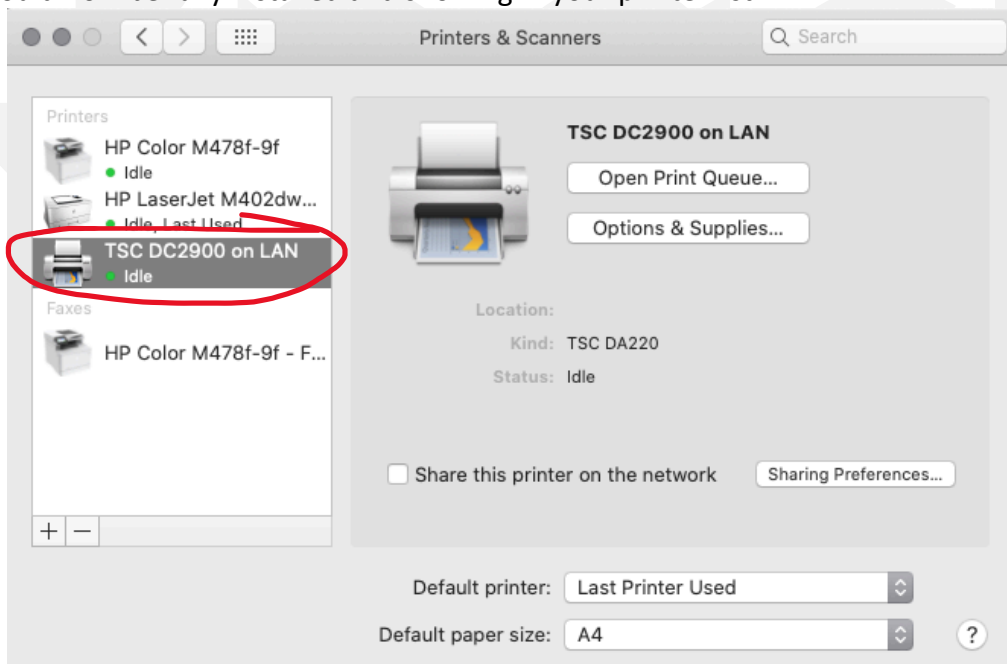
After selecting 'Other' it will pop with a finder window – navigate to where you downloaded the TSC drivers from step 1, and select DA200.ppd from inside the PPDs folder. – Select 'Open'



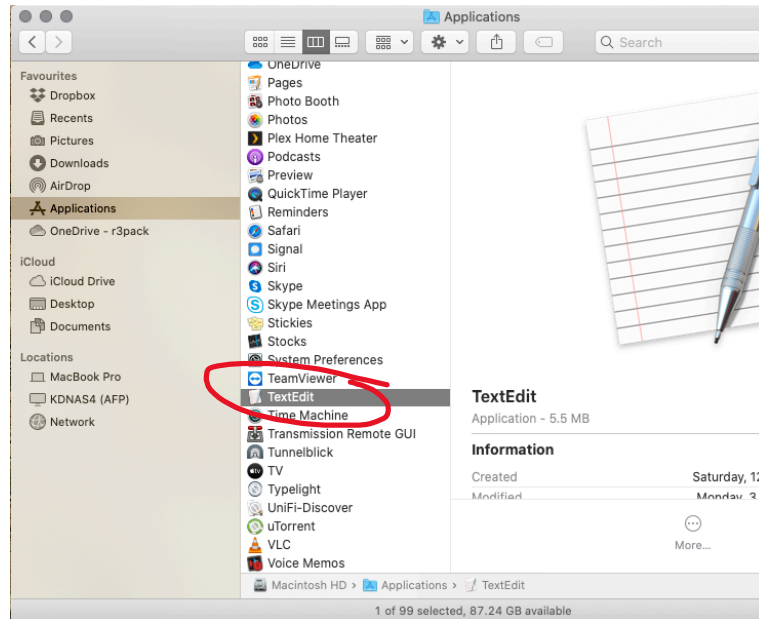
Click 'Add'



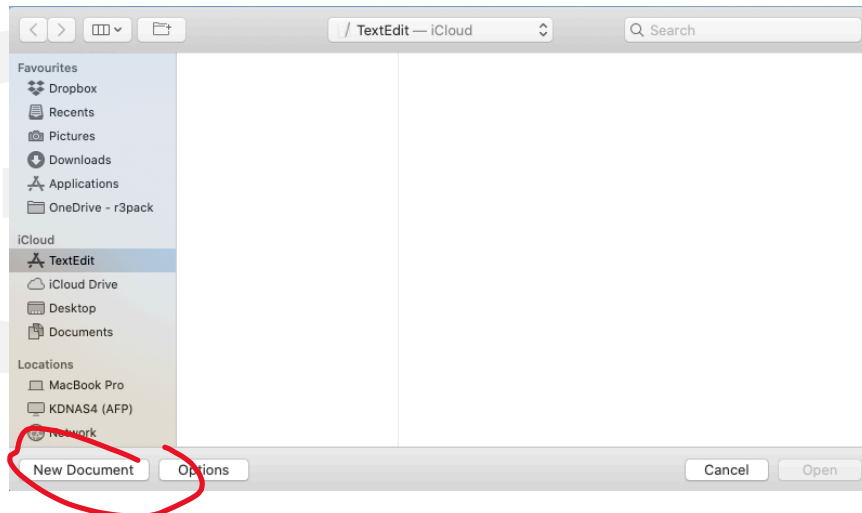
Your printer should now be fully installed and showing in your printer list:



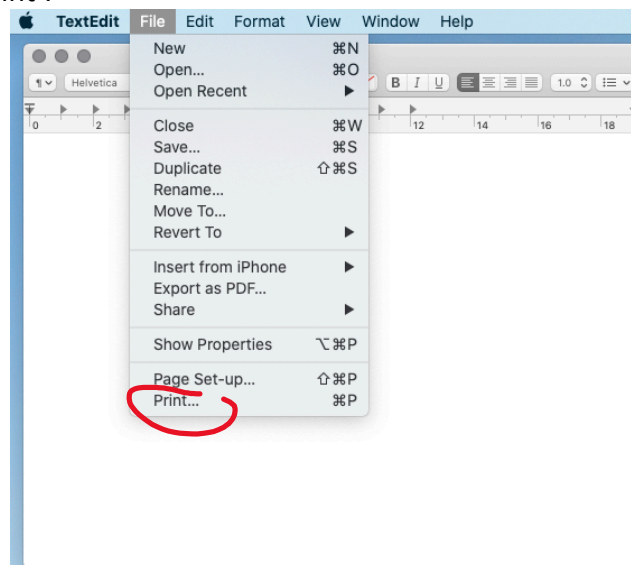
Step 7: Add the correct label size. From your finder, or the applications folder, select the application 'Text Edit'



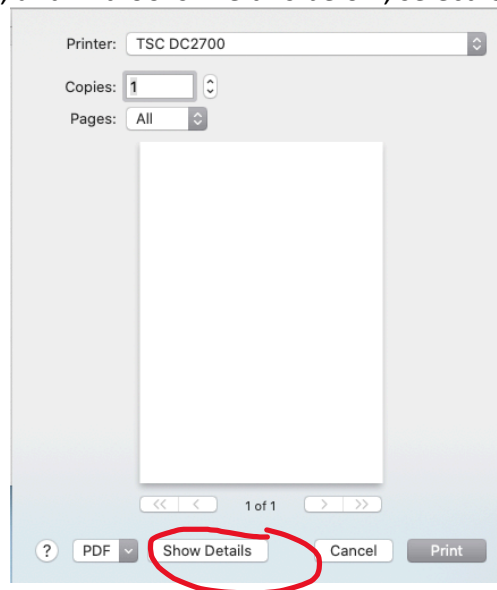
If prompted, select 'New Document':



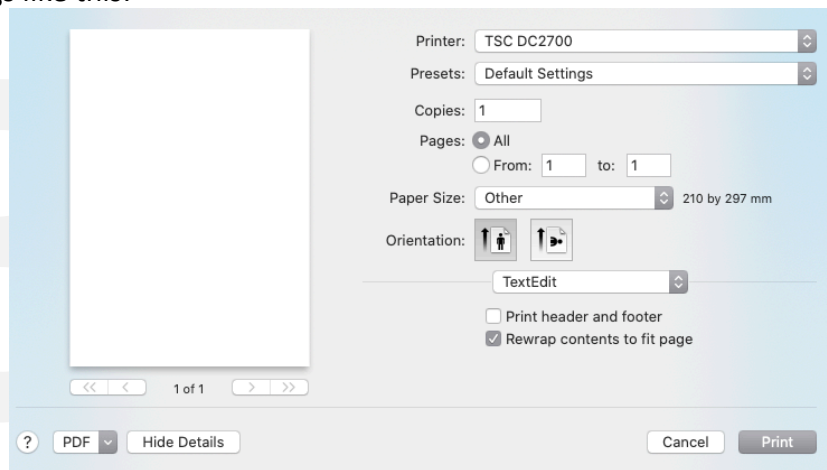
From the file menu, select 'Print':



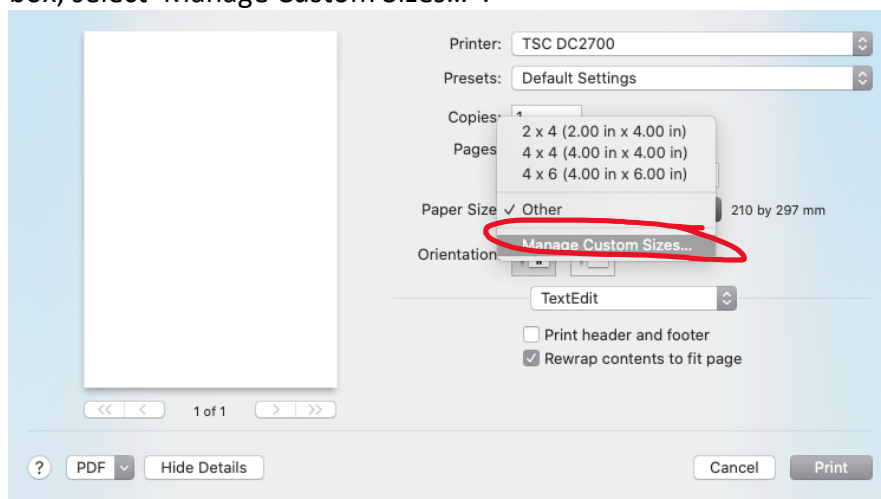
Select the correct printer selection, and if it looks like this below, select 'Show Details'



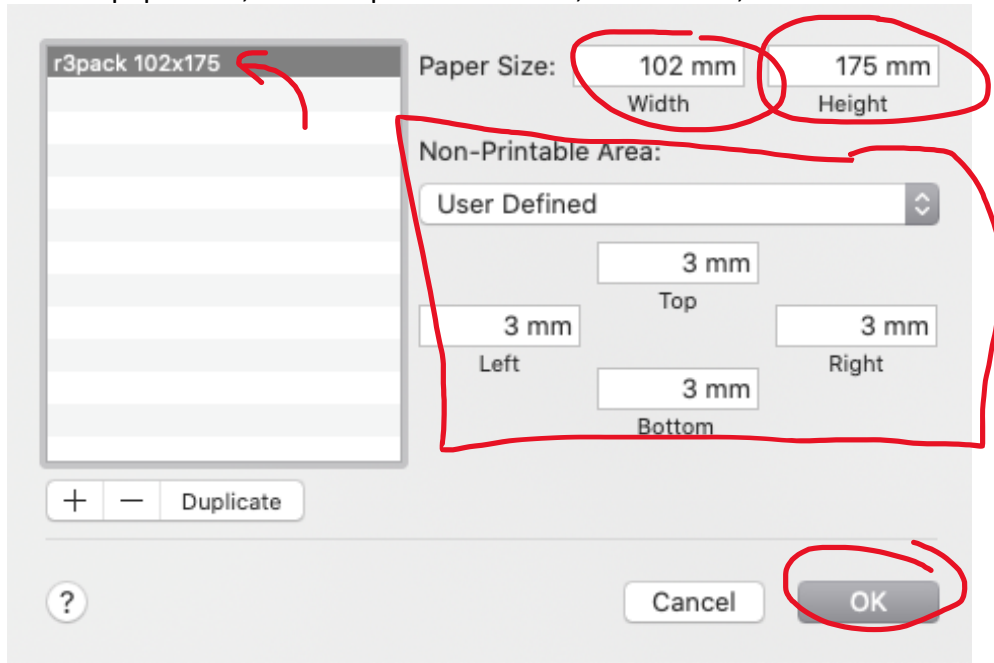
So you can see settings like this:



From the Paper Size box, select 'Manage Custom Sizes...':



Click the + (add) to add a paper size, and complete like below, when done, select 'OK'



Step 8: Go print a label from your preferred courier company from a web browser or other application. This screen shot below using CourierPost. Remember to select the Paper Size on your first print (it should remember for next print jobs):

