



A7

Special Edition

OWNER'S MANUAL



PRODUCT INFORMATION

Important Safeguards.....4
Cautions Before Installation.....6
Safety Information.....10
Main Unit & Parts.....12

PRODUCT INSTALLATION

Installation.....14
Operation.....18

PRODUCT SETTINGS

Cleaning.....22
Maintenance.....24
Before Calling For Service.....26
Specifications.....27

WARRANTY

Warranty.....28



READ ALL OPERATING INSTRUCTIONS BEFORE INSTALLATION

NOTES

1. This product should be installed according to this manual.
2. Read this manual carefully and install properly.
3. Keep this instruction manual in an easily accessible place.
4. Do not attempt to service this appliance yourself. Doing so will void the warranty.

DANGER - To reduce the risk of electric shock.

1. Do not place or store this appliance in a location where it can fall or be pulled into a tub or sink.
2. Do not place in, or drop into water or other liquids.
3. Do not touch a product that has fallen into water. Unplug immediately.

WARNING - To reduce the risk of burns, electric shock, fire, or injury.

1. Close supervision is necessary when this appliance is used by or are near infants, elders, or with disability persons. Children should not be permitted to use or touch this appliance without adult supervision. Be sure to adjust the toilet seat's temperature for elders, with disability persons, or people with sensitive skin.
2. Use this appliance only for its intended purpose as described in this manual. Only use attachments recommended by the manufacturer.
3. Do not operate this appliance if the cord is damaged or if the product is dropped into water.
4. Install the unit properly by following the installation procedure.
5. Only authorized persons can install or repair the unit. Do not attempt to service this appliance by yourself. Doing so could void the warranty.
6. Keep the cord away from heated surfaces.
7. Never drop or insert any objects into any opening or hose.
8. Do not use outdoors. Do not use aerosol or oxygen spray products on the unit.
9. Always follow the grounding instructions in this manual before plugging in the unit.

SAVE THESE INSTRUCTIONS



NOTE THE FOLLOWING IMPORTANT POINTS

1. Do not install in a location where water might be splashed on this appliance or in a location exposed to excessive moisture where condensation might form on the product's surface.
2. To avoid damage to electronic components due to high levels of humidity, provide adequate ventilation by opening a window and/or door when bathing.
3. Water supply should have a water pressure of 0.07 MPa to 0.74 MPa.
4. Connect the product to a pipe carrying potable water. Do not connect to an industrial water line or other water supplies that are not potable.
5. Bring the unit to room temperature.
6. The thermal protector in the water tank may malfunction when transporting or storing warm water.
7. The rated power voltage in AC 120V, 60Hz
8. Do not plug the unit in until installation is complete. It may result in malfunction.

WIRING REQUIREMENTS

1. After installation, all other servicing should be performed by authorized service representatives.
2. **Grounding Instructions** - This product should be grounded. In the event of an electrical short circuit, grounding reduces the risk of electric shock by providing an escape wire for the electric current. This product is equipped with a cord having a grounding wire and grounding plug. They must be plugged into an outlet that is properly installed and grounded.

DANGER - Improper use of the grounding plug can result in a risk of electric shock.

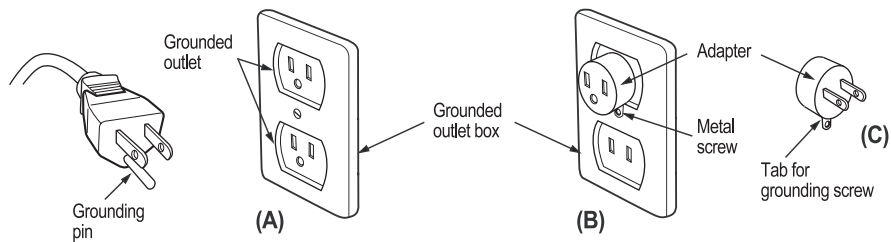
If it is necessary to repair or replace the cord or plug, do not connect the grounding wire to a flat blade terminal. The grounding wire can be identified by its insulated outer surface. It will either be colored green or will not contain yellow stripes.

Check with a qualified electrician or serviceman if you do not understand the grounding instructions or if you do not know whether the product is properly grounded.



CAUTIONS BEFORE INSTALLATION (CONT.)

3. This product is for use on a nominal 120V circuit. It has a grounding plug that is similar to the plug illustrated in sketch A. A temporary adapter, which looks like the adapter illustrated in sketches B and C may be used to connect this plug to a 2-pole receptacle as shown in sketch B if a properly grounded outlet is not available. The temporary adapter should be used only until the properly grounded outlet (sketch A) can be installed by a qualified electrician. The green colored rigid ear, lug and the like extending from the adapter must be connected to a permanent ground such as a properly grounded outlet box cover. Whenever the adapter is used, it must be held in place by the screw.



4. If it is necessary to use an extension cord, use only a three wire extension cord that has a three-blade grounding plug, and a three-slot receptacle that will accept the plug on the product. Do not use a damaged extension cord.

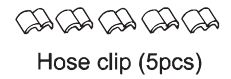
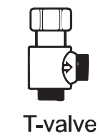
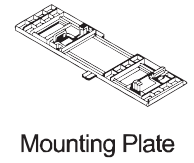
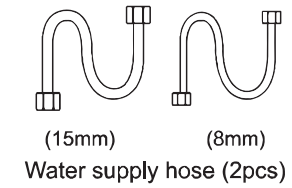
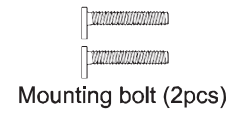
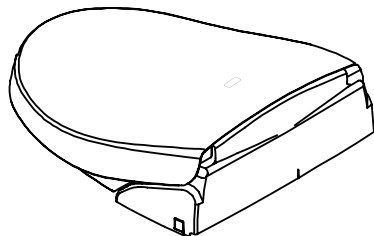
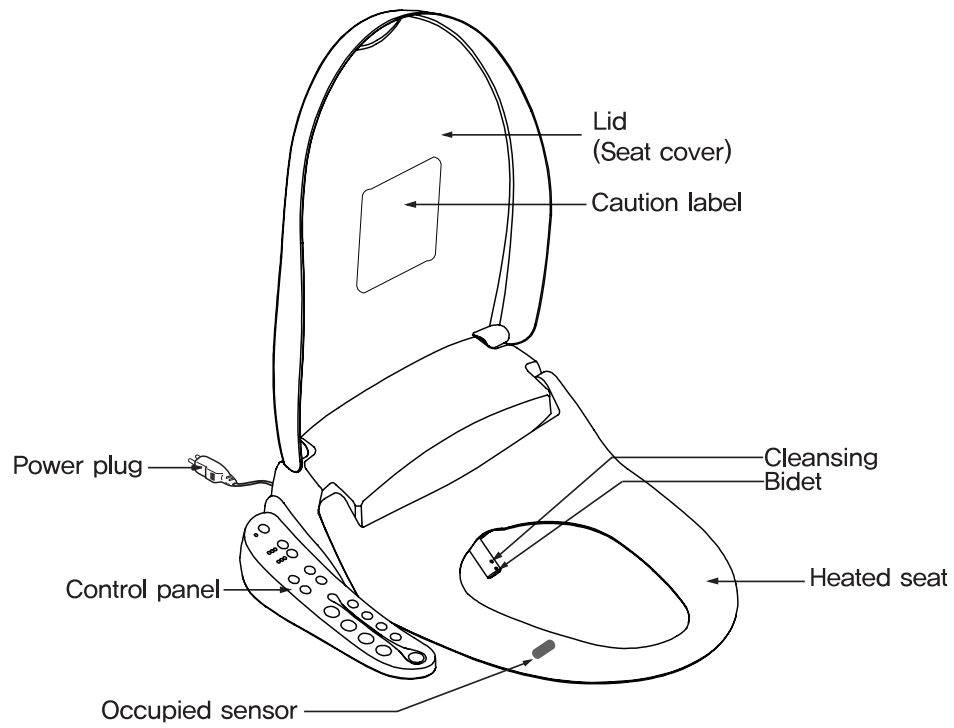


DANGER - FAILURE TO FOLLOW MAY CAUSE SEVERE INJURY OR DEATH. FOLLOW THE INSTRUCTIONS.

- **Do not splash water or cleansers on the product's plug.**
Doing so may result in fire or electric shock.
- **Do not plug or unplug with wet hands.**
It may result in injury or electric shock. Regularly wipe off the plug and electric outlet with a dry, soft cloth to prevent electric shock or fire.
- **Do not use a faulty power cord.**
Doing so may result in short circuit, electric shock, or fire.
- **Do not throw anything flammable into the toilet.**
Doing so may result in fire, discoloration, or malfunction.
- **Grounded wire or outlet must be installed.**
Not doing so may result in malfunction or electric shock.
If no grounded plug is used, make sure to install grounded wire.
- **Do not use many appliances in one power strip.**
Doing so may result in fire or damage. Be sure to use a dry and clean outlet. Do not use a faulty or loose outlet.
- **Use potable water only. (Ground Water)**
Not doing so may cause irritation or injury to your skin.
It may clog the pipe due to contaminants.
- **Do not disassemble the seat.**
Doing so may result in electric shock.
- **Do not disassemble, repair, or modify this appliance.**
Doing so may result in electric shock, injury, or malfunction.
- **Unplug when you hear beeping or smell a strange odor.**
Unplug right away and contact your dealer from whom your bought this appliance

WARNING - MIGHT CAUSE SLIGHT INJURY OR DAMAGE. BE AWARE.

- **Be aware of a low-grade burn.**
It may result in a low-grade burn if sitting on the heated seat for a long time. Be aware if being used for the following: children, senior citizens, patients, people who cannot control the temperature, people who are not sober, or people who are tired. If injured in a low-grade burn, see a doctor immediately.
- **Do not step on or place heavy objects on this appliance.**
Doing so may damage the unit. Do not step on the lid, seat, or control panel to avoid injury or product damage.
- **Unplug while not using over extended period of time.**
- **Unplug when there is thunder or lightning.**
- **Use this appliance on a toilet only.**
Not doing so may result in fire, or electric shock.
- **Do not use force to pull out the water hose.**
Doing so may cause water leakage.
- **Be aware of urine splash on a nozzle.**
Not doing so may result in malodor or failure.
- **Do not use force to close the lid.**
Doing so may cause malfunction. Be aware not to put fingers between the lid and sat when you close the toilet. It may cause injury.
- **Unplug when cleaning.**
Not doing so may result in fire or electric shock.
- **Use low temperature for children and handicapped.**
If the temperature is to high, it may result in burn if they fail to recognize the temperature.
- **Do not sit or lean against the lid or the control panel.**
Doing so may cause malfunction or breakage. Applying excessive force may damage the lid or components that may lead to injury.
- **Do not put a vase cup or small materials on this appliance.**
Doing so may result in fire or electric shock.





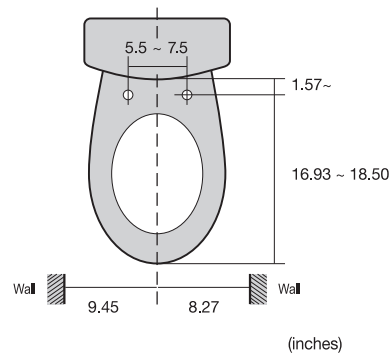
If electric work is needed, please contact a qualified electrician or service man only.

Remove the Existing Toilet Lid and Seat

1. Remove the nuts, washers, and cone packings from the toilet seat and mounting bolts in the back of the toilet.
2. Remove the toilet seat, lid, and mounting bolts.
3. Keep them in case you need them.

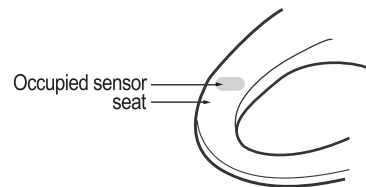
Toilet Size (Elongated)

The toilet dimensions must be within those shown on the right. Do not install this appliance on a toilet that does not meet these dimensional requirements.



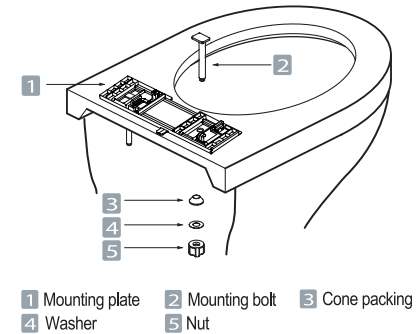
Occupied Sensor

1. This appliance is equipped with an occupied sensor.
2. The unit will not work unless the seat is occupied.



Mounting the Plate

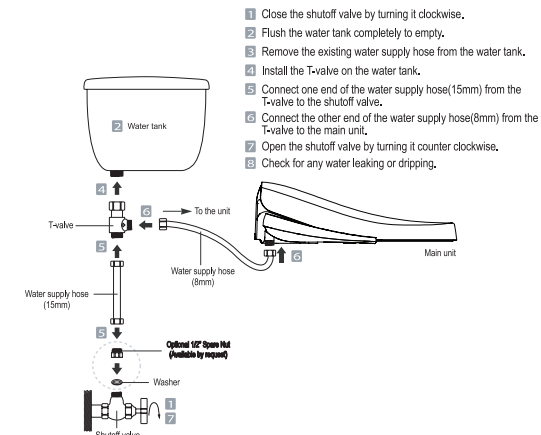
Place the mounting plate over each mounting hole. Insert the mounting bolts through the plate and mounting holes. Slide cone packings and washers onto the bolts and fasten tightly with nuts.



Connecting the Water Hose

Connect the other end of the flexible hose from the T-valve to the main appliance.

Using Inline Carbon Filter - The use of an external inline carbon water filter is not required unless the unit is used in an area with extreme hardwater. If a carbon filter is used, the filter must be replaced every 6 months. Inline carbon filters can be purchased from any authorized Bio Bidet reseller.

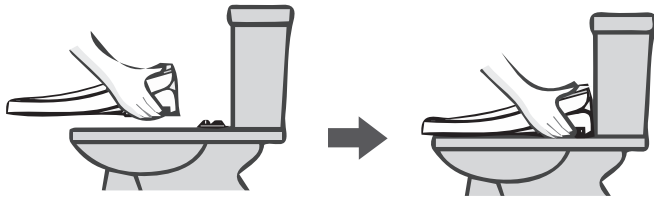


*Shutoff valve sizes may vary. If supplied parts do not fit, please call 877-339-5214

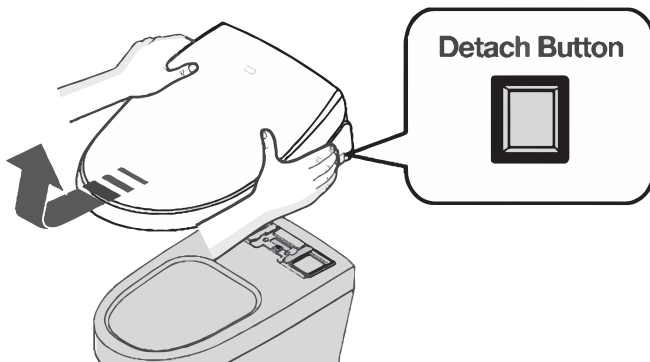


Attaching/Detaching the Unit

1. Slide the unit until it clicks into the plate.



2. While pressing the detach button, pull the unit forward and separate it from the toilet bowl.



Trial Operation

1. **Preparation**
Plug the power cord into the outlet, and then the water tank will be filled in 2 minutes.
2. **Checking All Functions**
Cover the toilet bowl using the sheet of plastic wrap on the unit to prevent the washing water from being sprayed out of the toilet. Then check for all function described in this manual.
3. **There are possibilities of water coming out that remains in the unit while heating.**



CAUTION

1. All functions will be operational when the seat is occupied except Nozzle Cleaning.
2. Before operating, ensure that water tank is filled up completely.

STOP

- Press “Stop” to stop current operation.
- When a user stands up, all operations will stop automatically.
- Press “Stop” for 3 seconds to turn the main unit off.

CLEANSING

- Press “Cleansing” to clean your posterior. The function will stop in 1 minute automatically.
- Press this button again to activate oscillation. The nozzle moves back and forth automatically to widen cleansing area.
- Oscillation wash stops if this button is pressed again.

BIDET

- Press “Bidet” for feminine wash. The function will stop in 1 minute automatically.
- Press this button again to activate oscillation. The nozzle moves back and forth automatically to widen cleansing area.
- Oscillation wash stops if this button is pressed again.

DRY

- Press “Dry” Warm air will come out for 3 minutes.
- To alter the strength of drying, press the button again.

AUTO

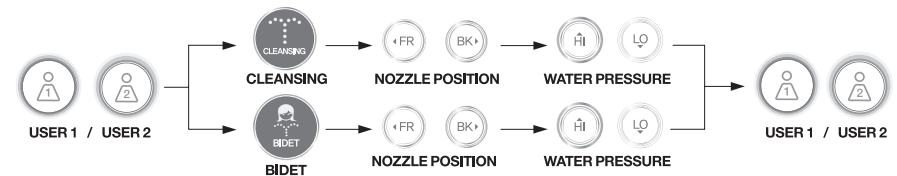
- Press “Auto” during the operation of “Cleansing” or “Bidet”
- Cleansing wash, oscillating wash and oscillating with massage will operate for each 20 seconds consecutively.
- If the bidet Auto is wanted, press “Bidet” and “Auto” consecutively.

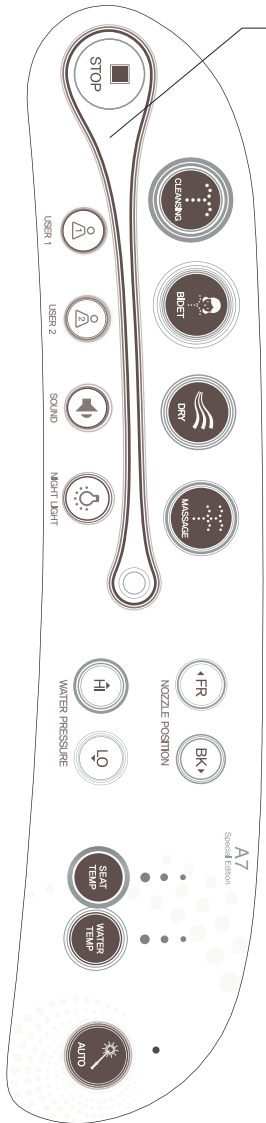
MASSAGE

- Press “Massage” to activate rhythmical wash for a massage effect when using “Cleansing” or “Bidet”.
- Press the button again to release this function.

USER SETTINGS

- Each button can save 2 settings. (Cleansing, Bidet)
- Press User 1 button with the seat sensor <ON>, and Cleansing or Bidet consecutively. Then choose nozzle position and water pressure level by pressing FR/BK and HI/LO buttons. Press User 1 again to save the setting with a beep.
- The same applies to saving User 2 setting.
- Press User 1 or User 2 while using cleansing or bidet will operate saved settings.





LED BAR

- All functions will show its duration or setting on the LED bar.

NIGHT LIGHT

- Press the button to activate Night Light.
- Delicate light will help user to use toilet without turning the light on during night time.

NOZZLE POSITION ◀FR / BK▶

- Nozzle position can be adjusted by pressing FR or BK buttons to 5 levels.
- Nozzle position will remain.

WATER PRESSURE HI / LO

- Water spray pressure can be adjusted by pressing HI or LO buttons to 5 levels.
- Water pressure level will remain.

TEMPERATURE ADJUSTMENT (seat & water)

- Temperature of seat and water can be adjusted.
- There are 4 levels (Room temp-Low-Medium-High)

SILENT MODE

- Press the button to enable the beeping sound.
- To disable, press the button again.

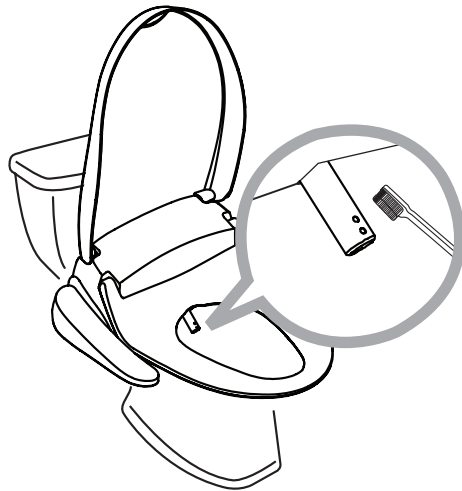


CAUTION: Do not forcefully push, pull, or bend the nozzles. It may result in failure. Make sure to use the “Stop” button on the side control panel.

NOZZLE CLEANING

Manual Cleaning

1. Make sure the occupied sensor is not activated. (Do not sit on the seat or place hands on the seat sensor)
2. Press “Front” button for 3 seconds to extract the nozzle.
3. Use a toothbrush of soft cloth to clean the nozzle.
4. Press “Stop” button to retract the nozzle.

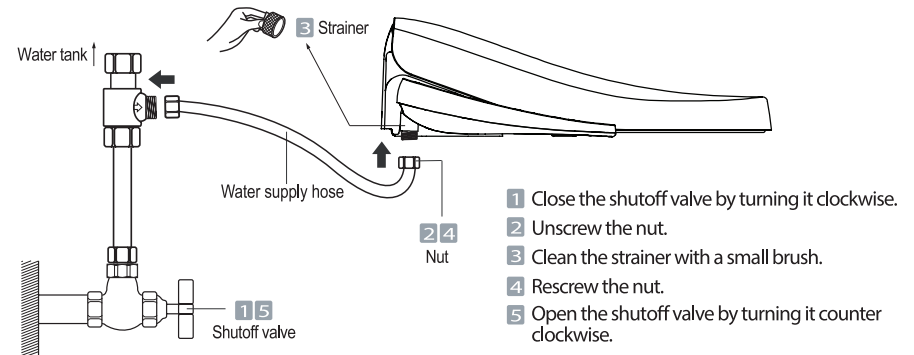


Auto Cleaning

1. Press “Back” button for 3 seconds to start auto cleaning. The nozzle will be cleaned for 30 seconds and returned automatically.
2. Press “Stop” button while cleaning will retract the nozzle.
3. Do not use force to push or pull the nozzles while cleaning

Strainer Maintenance

- This appliance will not operate properly if the strainer is clogged. Be sure to clean the strainer regularly.



Cleaning The Body

1. Regularly wipe off the body with a dry soft cloth, sponge, or wash with a damp cloth and mild detergent.
2. For care of plastic body, do not use any cleansers such as: toilet cleanser, home cleanser, bleach, benzene, paint thinner, cresol, etc

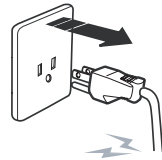




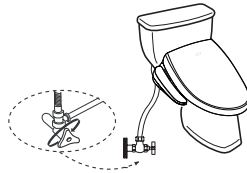
Draining Water - while not using over extended period of time.

1. Unplug the Power Supply Cord.

- Not doing so may cause fire.



2. Close the Shutoff Valve.



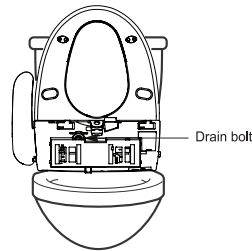
3. Unscrew the Mounting Bolts

- Refer to the installation method.



4. Drain Bolts

- Uphold the appliance and thoroughly drain the water by unscrewing the drain bolt. Beware of losing the drain bolt.
- The following figure is only the check the location of the 'Drain Bolt'. To prevent malfunction, do not place the vertical position of tilt the product.



5. Screw the Drain Bolt and Install the Appliance

- Refer to the trial operation method in order to use this appliance again.

Prevent Freezing

- 1. Make sure the power cord is plugged properly.**
- 2. Set the temperature of water to low or middle. (Freezing can be prevented by thermal efficiency of water tank.)**
If there is not heating system in the toilet, wrap pipes with cloth or other materials.
- 3. Not using the unit for a long time in the winter, unplug and drain the water from the water tank and pipes thoroughly.**
Refer to the water drain method.



| PROBLEM | POSSIBLE CAUSE | SOLUTION |
|----------------------------------|--|---|
| Completely fails to work | <ul style="list-style-type: none"> Is there a power cord outage? Is the power cord unplugged? Are you sitting on the seat correctly? | <ul style="list-style-type: none"> Check for power cord failure or a tripped breaker. Plus the power cord in properly. Sit on the seat completely. |
| Water does not spray | <ul style="list-style-type: none"> Is the water shutoff valve closed? Is the strainer clogged? Are the nozzles clogged? Is the water purifying filter clogged? | <ul style="list-style-type: none"> Check for any water leaking or dripping Clean the strainer Clean the nozzles Change the water purifying filter |
| Water is leaking or dripping | <ul style="list-style-type: none"> Are all the hoses tightened up properly? | <ul style="list-style-type: none"> If the water is still leaking or dripping, contact your dealer |
| Seat or water is not warm enough | <ul style="list-style-type: none"> Is the temperature set to OFF? Is the appliance used in Eco mode during cold weather? | <ul style="list-style-type: none"> Reset the temperature. Press "Eco" again to release the function. |

| ITEM | A7 SPECIAL EDITION | |
|-----------------------|--|---|
| Standard power supply | AC 120V 60Hz 1248W | |
| Water Supply | Way of connection | Direct connection to tap water |
| | Water pressure | 0.07 MPa - 0.74 MPa |
| Cleansing | Spray for cleansing | 700 (±150) ml/min |
| | Spray for bidet | 700 (±150) ml/min |
| | Water capacity | 740 ml |
| | Spray temperature | Room temp - 39°C (102.2°F) |
| | Heater capacity | 1200W |
| Dry | Safety feature | Thermal switch, temperature fuse, floating switch |
| | Air temperature | Room temp - 60°C (140°F) |
| | Heater capacity | 280W |
| Heated Seat | Safety feature | Temperature fuse, Bimetal |
| | Seat temperature | Room temp - 39°C (102.2°F) |
| | Heater capacity | 48W |
| Deodorization method | Safety feature | Temperature fuse |
| | | - |
| Circuit breaker | Within 15mA 0.03 second | |
| Length of power cord | 1.2m | |
| Dimensions | (W) 481 mm (18.94 inches) x (L) 528mm (20.79 inches) x (H) 160mm (6.30 inches) | |
| Weight | 4.6 Kg (10.14 lbs) | |

- Recommended water supply pressure are 0.1 - 0.69 MPa.
- The minimum available water supply pressure is 0.07 MPa, however 0.1 MPa pressure, water spray pressure might not be adequate.



USPA Personal Hygiene Appliance Limited Warranty

We warrant our products to be free from manufacturing defects under normal use and service for a period of one (1) year from the date of purchase. 100% Coverage of all parts and labor for the entire product for the first year from original date of purchase. This warranty is only valid within the United States and Canada. Our obligation to you under this warranty is limited to repair or replacement, at our option, of defective products or parts, provided that the products were properly installed and used in accordance with instructions. We reserve the right to make inspections in order to determine the cause of the defect. We will not charge for labor or parts in connection with warranty repairs or replacement. We are not responsible for the cost of remodel, return, and/or re-installation of products.

This limited warranty does not apply to:

- Damage or loss from fire, earthquake, flood, storm, etc,
- Damage or loss resulting from any unreasonable use, abuse negligence, or improper maintenance.
- Damage or loss from improper installation, removal, repair, or modification.
- Damage or loss resulting from sediment or other matters contained in your water system.

This warranty gives you specific legal rights.

For warranty or service information, please contact your dealer where you bought this appliance or us. Only the original purchaser may submit a claim under this limited warranty.

This limited warranty is our only warranty covering your product. Repair or replacement as provided under this warranty shall be the exclusive remedy available to you. We shall not be responsible for loss of the product or for other incidental, or consequential damage or expenses you may incur or for labor or other costs due to installation or removal, or cost of repairs by others, or for any other expense not specifically stated above. Except to the extent prohibited by applicable law, any implied warranties including that of merchantability or fitness for use, are expressly limited to the duration of this warranty.

Warning! We are not responsible or liable for any failure of, or damage to, this plumbing product component caused by in-tank bowl cleaners containing chlorine (calcium hypochlorite).

Note: The use of the high concentration of chlorine related products can seriously damage the fittings. This damage can cause leakage and serious property damage.

For more information, please contact your dealer or us.

BIO BIDET INNOVATION LLC

7900 S RT 31 Crystal Lake IL 60014

T: 847-458-2334

F: 847-854-1296

support@biobidet.com

www.biobidet.com

Thank You



Technical Support/Customer Service
7900 S Route 31 Crystal Lake, IL 60014
T: 847.458.2334
U.S. TOLL FREE: 877.339.5214

support@biobidet.com
www.biobidet.com