



BBC Innovation Corp.

7900 S Illinois Route 31 T) 847. 458. 2334
Crystal Lake IL 60014 T) 877. 339. 5214
www.biobidet.com F) 847. 854. 1296

User's Guide

This user's guide contains the product warranty certificate.
Be sure to read this user's guide carefully before use.

120V 60Hz  c 

THANK YOU

WELCOME TO THE BIO BIDET FAMILY

Congratulations and thank you for your purchase. We are passionate about creating products that are designed to enhance both the function and beauty of your home. We recognize your need for innovative features at an affordable price and strive to exceed your expectations with every product we craft.

WE'RE HERE TO HELP

We understand every installation is unique and while your new Bio Bidet comes with all the parts to get you started, if you have any questions or need special fittings; please contact us. We have trained support agents ready and available to assist you by telephone, email, or live chat.

***Special fittings available**

847-458-2334 support@biobidet.com www.biobidet.com



**THIS UNIT WAS MANUFACTURED FOR HOUSEHOLD USE ONLY.
READ ALL OPERATING INSTRUCTIONS BEFORE INSTALLATION.**

Notes

1. This product should be installed according to this manual.
2. Please read this manual carefully and install properly.
3. Please save this manual and place at an easily **accessible** location.
4. Do not attempt to service this appliance yourself. Doing so could void warranty.

CONTENTS

1. Safety Precautions	4	Preparation
2. Parts & Configuration	8	
3. Installation	10	Installation
4. Operation	14	Operation
5. Maintenance & Cleaning	18	Maintenance & Cleaning
6. Settings	19	
7. Troubleshooting	20	
8. Dimensions	21	
9. Specifications	22	
10. Warranty Information	23	

01. Safety Precautions

IMPORTANT SAFEGUARDS

- Basic electrical safety precautions should always be followed.

READ ALL INSTRUCTIONS BEFORE USING

- For use with 120V 60Hz : Power supply must be a 15 Amp GFCI outlet.
- The electrical cord must be connected to a GFCI outlet.
- The GFCI outlet should be 1ft. above the floor.
- Install only in well-ventilated areas to avoid excess humidity.
- Do not install in narrow toilet stalls or in shower stalls.
- Install only where direct contact with water is minimized.
- Do not install near any heat source
- Avoid using extension cords if possible. Consult with a certified electrician where extension cords are necessary.

DANGER – To reduce the risk of electrocution:

- Do not use while bathing.
- Do not place or store product where it can fall or be pulled into a tub or sink.
- Do not place in or drop into water or other liquid.
- Do not reach for a product that has fallen into water. Unplug immediately.

WARNING – To reduce the risk of burns, electrocution, fire or injury to persons:

- Close supervision is necessary when this product is used by, on, or near children.
- Use this product only for its intended use as described in this manual. Only use attachments recommended by the manufacturer.
- Never operate this product if it has a damaged cord or plug, if it is not working properly, has been dropped or damaged, or dipped into water. Return the product to a service center for examination and repair.
- Keep the cord away from heated surfaces.
- Never drop or insert any object into any opening or hose.
- Do not use outdoors or operate where aerosol (spray) products are being used or where oxygen is being administered.
- Connect this product to a properly grounded outlet only. See grounding instructions.
- Unplug this product before filling. Fill (reservoir) with water only.

SAVE THESE INSTRUCTIONS

01. Safety Precautions

GROUNDING INSTRUCTION

DANGER - Improper use of the grounding plug can result in a risk of electric shock.

This product has a three-prong grounding plug, which must be plugged into an outlet that is properly installed and grounded. In the event of an electrical short circuit, grounding reduces the risk of electric shock by providing an escape wire for the electric current. If repair or replacement of the cord or plug is necessary do not connect the grounding wire to either flat blade terminal. The wire with insulation having an outer surface that is green with or without yellow stripes is the grounding wire. Check with a qualified electrician or service person if the grounding instructions are not completely understood, or if in doubt as to whether the product is properly grounded.

This product is for use on a nominal 120V circuit, and has a grounding plug that looks like the plug illustrated in sketch A in Figure 1. A temporary adapter, which looks like the adapter illustrated in sketches B and C, may be used to connect this plug to a 2-pole receptacle as shown in sketch B if a properly grounded outlet is not available.

The temporary adapter should be used only until a properly grounded outlet (sketch A) can be installed by a qualified electrician. The green colored rigid ear, plug, or the like extending from the adapter must be connected to a permanent ground such as a properly grounded outlet box cover. Whenever the adapter is used, it must be held in place by the screw.

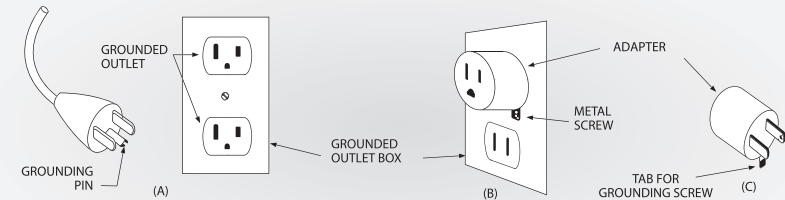
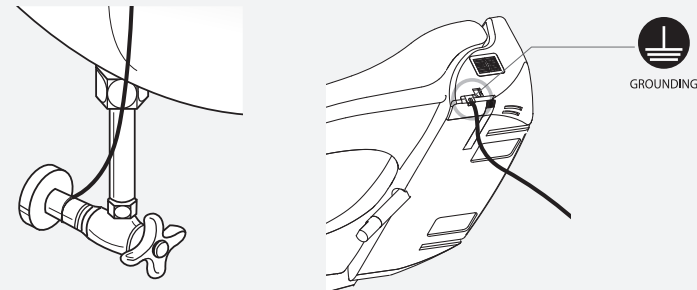


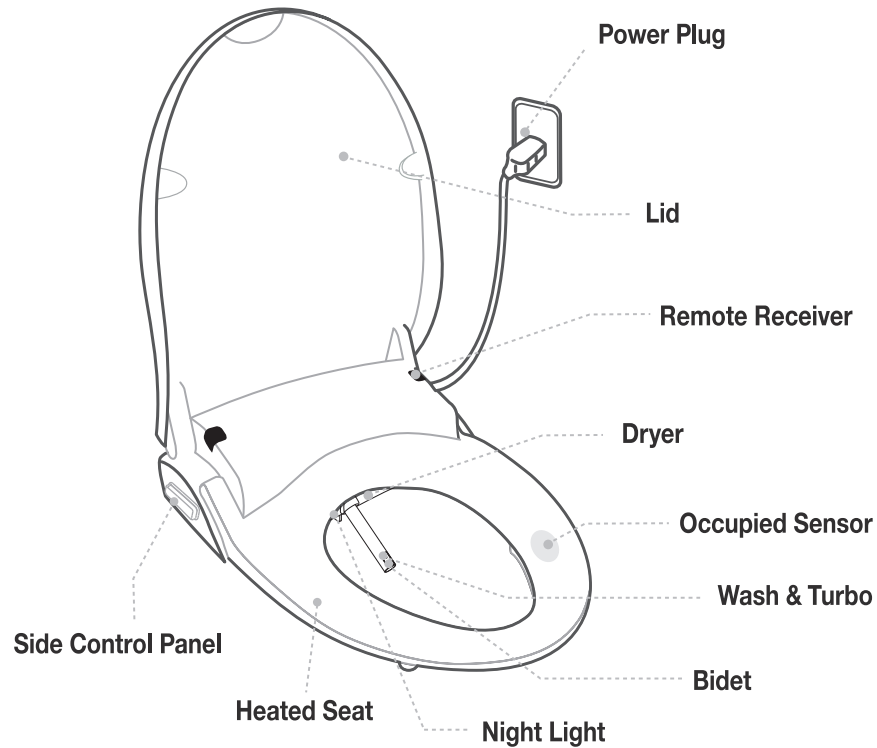
Figure 1.

Optional Grounding Instructions



02. Parts & Configuration

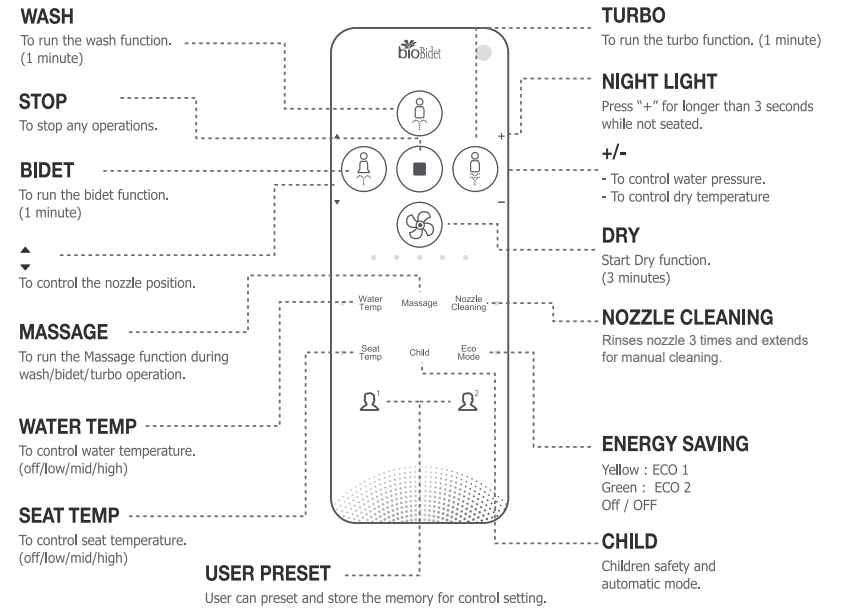
Main Body



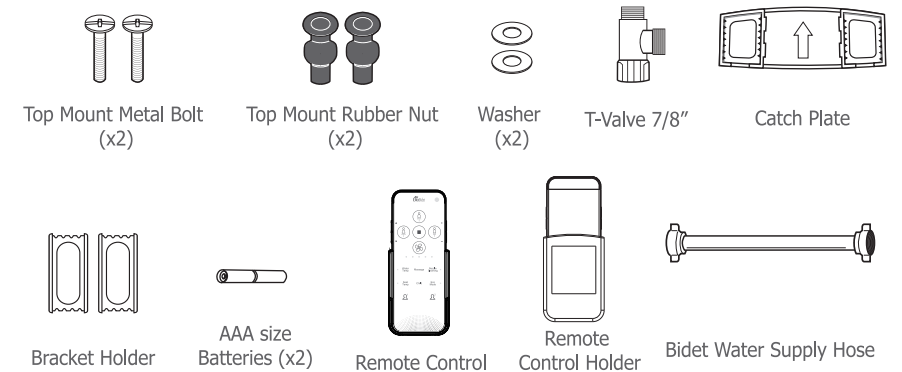
Toilet Seat type	Distance A
Round	16.9 ~ 17.7" (430 ~ 450mm)
Elongated	17.2 ~ 18.1" (450 ~ 470mm)

Diagram showing the distance A for toilet seat installation.

Remote Control



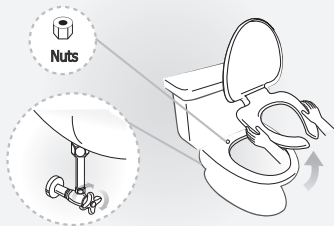
Installation Parts



03. Installation

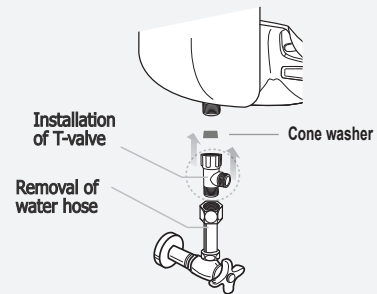
1 Remove the seat from the existing toilet body.

- ▶ Release the nuts, and then remove the seat and cover from it.
- ▶ Store the seat in a proper place for future use.
- ▶ Turn off the water.



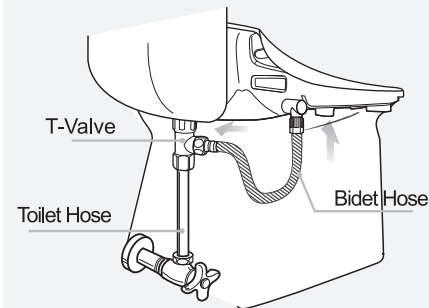
2 Install the T-valve.

- ▶ Disconnect the existing water hose.
- ▶ Attach the T-valve to the bottom of the toilet.
- ▶ Connect the water hose to the T-valve.

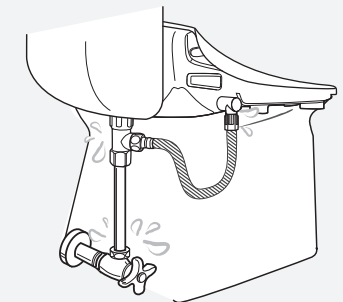


*Make sure the cone washer is properly seated inside the T-valve with the cone side up.

5 After installing the T-valve, connect the supplied bidet hose from the center of the T-valve to the bidet.

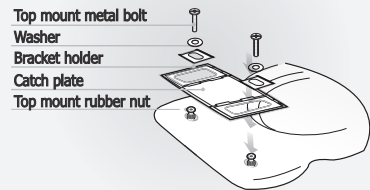


6 Turn on the water and check for leaks.

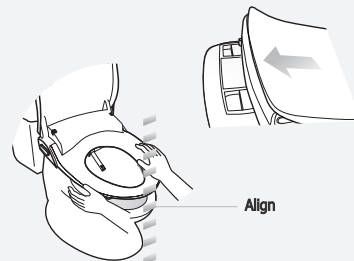


3 Fix the catch plate onto the toilet.

- ▶ Place the catch plate on the toilet with the arrows pointing towards the toilet tank.
- ▶ Align the bolt guides over the toilet bolt holes.
- ▶ Secure the catch plate to the toilet by hand tightening the bolts.



4 Push the main body toward the catch plate completely.



- ▶ Push it until you hear a "click".
- ▶ When the product is not installed well, it may cause leakage.
- ▶ Adjust as needed before tightening bolts.*

*Do not overtighten bolts.

7 Plug in and be sure that the nozzle comes out and retracts when powered on.

- ▶ Don't plug the power cord with wet hands. Risk of electric shock.

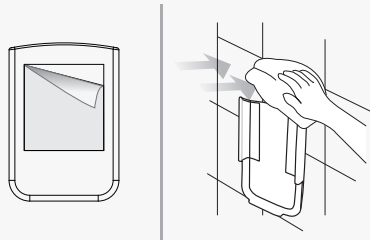


03. Installation

Remote control installation & batteries insertion

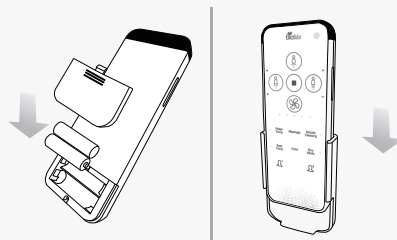
- 1 Remove the adhesive protection to attach the remote control bracket to the wall or other surface.**

▶ Clean and dry the area thoroughly before attaching the bracket



- 2 Insert two "AAA" type batteries (included) as indicated inside battery compartment.**

▶ Identify a location in the bathroom for the remote control that is visible and reachable from the toilet.

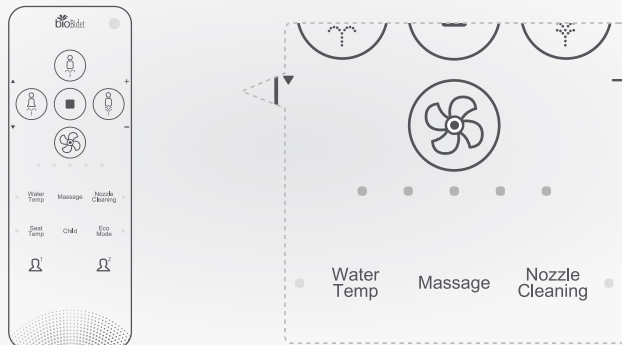


- 3 When the batteries have reached the end of service life, all LEDs (5points) will blink.**

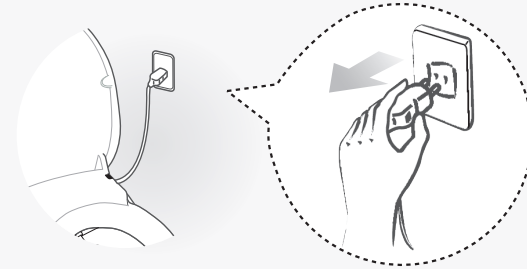
Replace the batteries with new AAA size X 2 pcs.

※ Caution

Do not use old and new batteries together. This could cause damage or failure of the remote control.



- 4 If the unit does not work after replacing the batteries, unplug and wait for 3 seconds. Plug in again.**



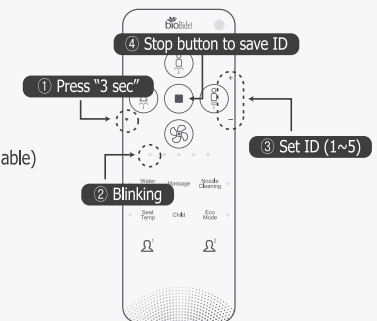
- 5 Remote Control ID Setting**

• ID setting is required to protect remote signal interruption if more than one bidet seat is installed at one place (public toilets)

※ After replacing the batteries, ID of the unit will be initialized as "00" (factory initialization ID), and its ID will be equalized ID of the remote control that reaches the unit first. This ID assigning function will be needed to prevent signal interruption if more than 2 units are used at one place. In case of using one unit only, no setting is needed.

※ If you want to change the ID, please refer to "Remote Control ID Setting"

1. Press Nozzle Control "▼" for 3 seconds. The indicator of "Nozzle Cleaning" blinks and the unit is ready for ID setting.
2. Set the ID by pressing Power Control "+" or "-" (1~5 IDs available)
3. Press "Stop" to save the ID. The main unit will be synchronized simultaneously.



* The remote should be located near by the main unit when ID is set.

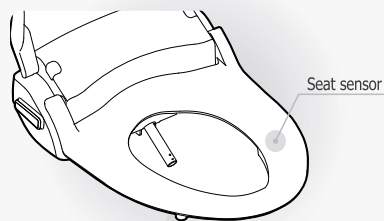
* Default ID of remote is "0"

* In case of battery replacement, power resetting of main unit or factory initialization, ID will be initialized, "0", and setting process should be done again.

04.Operation

1 Sit On The Toilet Seat

- ▶ Be sure to sit on the seat sensor. If the sensor is not occupied, all functions will not operate.
- ▶ Skin to seat contact needs to occur to activate seat.



2 Wash, Bidet, Turbo

- ▶ Activate a cleansing function by pressing the corresponding button.
- ▶ When pressing the selected function again, the nozzle will oscillate back and forth to wash a wider range.
- ▶ Press the button once again to stop oscillate function.
- ▶ The specialized water spray in Turbo function helps relieve constipation.



5 Child Function

- ▶ When selecting Child function, settings adjust to low pressure.
- ▶ 1 min Bidet - 30 sec Bidet Oscillating - 30 sec Bidet Pulse.

*** What it does :**
 Extra extended nozzle position
 Lower water pressure
 Lower seat temperature
 Lower water temperature

Child

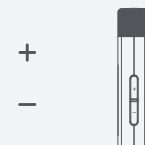
6 Nozzle Position Control

- ▶ Nozzle position is adjustable. (5 positions)



Water Pressure Control

- ▶ Water pressure is adjustable. (5 levels)
- ▶ If the water or screen filters become blocked, it may cause low water pressure. (See pg. 19)



3 Dry Temperature Control

- ▶ Dryer operates for 3 minutes.
- ▶ Dryer temperature is adjustable by pressing "+" or "-" buttons. (5 levels)
- ▶ Dryer effect will be improved if you wipe the moisture lightly before operating the drying function.



4 Massage

- ▶ When pressing the Massage button during the operation of Wash, Bidet, and Turbo, water pressure will repeat high and low for smooth pulsating wash.
- ▶ Pulse function will not operate during the operation of Sitz bath*.

*See how to use in page 17, step 14.

Massage

7 Stop

- ▶ All operations will stop.
- ▶ When pressing the Stop button for 3 seconds, unit will turn off.
- ▶ Press Stop, Wash, Bidet or Turbo to turn on.



8 Seat/Water Temperature Control

- ▶ Seat/Water temperature is adjustable. (4 levels) (Off - Low - Middle - High)
- ▶ To reduce the chance of low temperature burns, the seat has a safety feature that turns to low temperature (35°C, 95°F) when seat is occupied for more than 15 minutes consecutively.

● Seat Temp

04.Operation

9 Energy Saving Function

- ▶ Automatic energy saving mode
 - This mode is activated by pressing the Energy Saving button until yellow LED lights up. (Seat and water temperature will be kept at 89°F)
- ▶ Powerful energy saving mode
 - This mode is activated by pressing the Energy Saving button until green LED lights up. (Seat and water heater will be kept off)
- ▶ Deactivate energy saving mode
 - Press the Energy Saving button until LED lamp turns off.
- ▶ When the unit is occupied, it adjusts to the preset temperature and it returns to the saving mode when seat is unoccupied.
- ▶ If the seat and water temperature are off, they will remain off.

Eco Mode ●

10 Nozzle Cleaning

- ▶ When selecting Nozzle Cleaning while not seated, the nozzle cleans itself 3 times. Then nozzle extends and stops for manual cleaning process.
- ▶ Clean the nozzle with a brush and press STOP button after completion of manual cleaning. Then nozzle cleans itself for 3 times and retracts.
- ▶ NOZZLE CLEANING will not operate if the seat sensor is activated.

Nozzle Cleaning ●

13 Sitz Bath

- ▶ Wash or Bidet is switched to Wash Sitz Bath or Bidet Sitz Bath if Nozzle Cleaning button is pressed during use.
- ▶ Water pressure is switched to 1st level regardless of preset water pressure settings and Sitz Bath operates for 5 minutes.
- ▶ LED of Nozzle Cleaning turns on during the operation of Sitz Bath.
- ▶ Select the Nozzle Cleaning again to switch to normal Wash or Bidet.

Nozzle Cleaning ●

14 Seat Sensor Bypass

- ▶ The seat sensor can be activated and deactivated by pressing Massage button for 3 seconds.
- ▶ If the seat sensor is deactivated, the unit works without occupying the seat and select features* cannot be controlled.

* Features

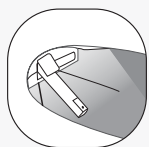
Night light, Silent mode, Nozzle cleaning.

3 Seconds

Massage

11 Night Light

- ▶ Blue LED night light provides enough brightness to see the toilet without turning on the bathroom light.
- ▶ Night light can be turned on and off by pressing '+' for 3 seconds while not seated.
- ▶ Night light setting cannot be adjusted if seat sensor bypass feature is activated.



3 Seconds



12 Automatic tank draining

- ▶ To protect from water contamination, the water tank will be drained (replaced) for 2 minutes if the seat is not used for 48 consecutive hours.
- ▶ This feature is deactivated from the factory. To activate this feature, press Stop and Water Temp. buttons for 3 seconds.



3 Seconds

Water Temp ●

15 Reset

- ▶ Press and hold the Stop button on the auxiliary panel for 5 seconds.
- ▶ After 3 seconds, the seat will power off. Keep holding another 2 seconds and the seat will power back on. This completes the factory reset process.



3 Seconds

16 User Preset

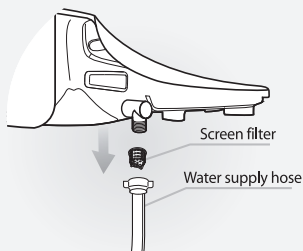
- ▶ Nozzle position, water pressure, dry/water/seat temperature can be preset and stored for 2 different users.
- ▶ How to preset
 - 1) Adjust nozzle position, water pressure, dry/water/seat temperature to your preference.
 - 2) Preset 1 : Press Stop button and ▲ simultaneously for 3 seconds.
 - 2) Preset 2 : Press Stop button and ▼ simultaneously for 3 seconds.
 - 3) Press the "Stop" button or just wait to complete.
- ▶ Using the Preset Features
 - 1) Press selected preset button
 - 2) Preset nozzle position, water pressure and temperatures will be activated.



05. Maintenance & Cleaning

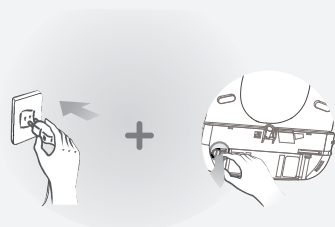
Screen Filter Cleaning

- 1 Close the water valve.
- 2 Disconnect the water supply hose. Take the screen filter out and clean it with a soft brush.
- 3 Return the filter after cleaning and reconnect the water supply hose.
- 4 Open the water valve.



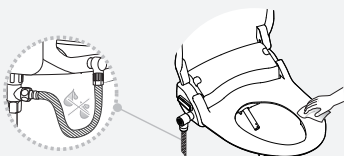
Extended Non-Use

When the bidet seat is not being used for an extended period of time, unplug the unit and drain the tank.



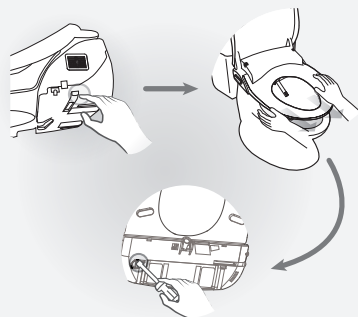
Seat Cleaning

- 1 Exterior surface of unit is made of plastic material, which may be damaged by scrubber, chemicals, etc.
- 2 Wipe the surface with a soft damp cloth. Do not spray water directly onto the surface.
- 3 Clean the body after removing the power plug from the outlet. Be sure no water splashes into the power plug or outlet.
- 4 Be careful of not dropping any chemical detergents or toilet cleaner on the main body or supply hose to avoid damage.



Draining of Tank

- 1 Remove the power plug from the outlet.
- 2 Close the water feed valve.
- 3 Press the release button and gently pull to remove the unit from the catch plate.
- 4 Use a flat-head screwdriver to open the drain plug.



06. Settings

6-1. User setting with the remote control

● : Seat sensor 'off' ○ : Seat sensor 'on' ◐ : Regardless of on/off

No	Function	Seat status	Switch operation	Description	Initial status
1	Silent mode	●	" - " for longer than 3 seconds.	To turn on/off the operating chime sound.	ON
2	Seat sensor bypass	●	" Massage " for longer than 3 seconds.	Seat sensor feature will be deactivated.	OFF
3	Night light	●	" + " for longer than 3 seconds.	To turn on/off the night light.	ON
4	Automatic tank draining	●	" [Water Temp] " for longer than 3 seconds	Automatic tank draining feature will be deactivated.	OFF

* The unit will work without sitting on the seat if the occupied seat sensor is deactivated. (turned off)

* If the seat sensor is deactivated, some features cannot be controlled.

(Night light on/off, silent mode on/off, and nozzle cleaning)

6-2. User setting with the side control (auxiliary panel)

No	Function	Seat status	Switch operation	Description	Initial status
1	Factory reset	●	Press and hold the Stop button for 5 seconds.	After 3 seconds, the seat will power off. Keep holding another 2 seconds and the seat will power back on. This completes the factory reset process.	ON
2	Power off	●	" [Water Temp] " for longer than 3 seconds.	Press one of Stop, Wash, Bidet, Intensive or Dry to power on.	

07. Troubleshooting

※ Please check the following points before requesting repair service.

Problem	Check list
Completely out of order	<ul style="list-style-type: none"> • Check if the power plug is not connected. • Check if the power supply or outlet has failed.
Water does not spray out	<ul style="list-style-type: none"> • Check if the water supply is turned on. • Check if water valve is open. • Check if nozzle is blocked by foreign material. • Check if connection hose is bent.
Water pressure is low	<ul style="list-style-type: none"> • Check if screen filter is blocked and clean if needed. • Check if the water pressure is set at too low level.
Water is not warm enough	<ul style="list-style-type: none"> • Check if its temperature is set at off or low level, or economy mode.
Seat is not warm enough	<ul style="list-style-type: none"> • Check if its temperature is set at off or low level, or economy mode.
Water tank is drained intermittently	<ul style="list-style-type: none"> • Check if the automatic water draining feature activates.

※ Using inline carbon filter

Use of external water filters is only recommended in areas with known hard water issues.

If a filter is used, it must be replaced every 3 months.

This product is designed and intended for use exclusively with Bio Bidet water filters.

The purchase or use of any other water filter is not the responsibility of BBC Innovation.

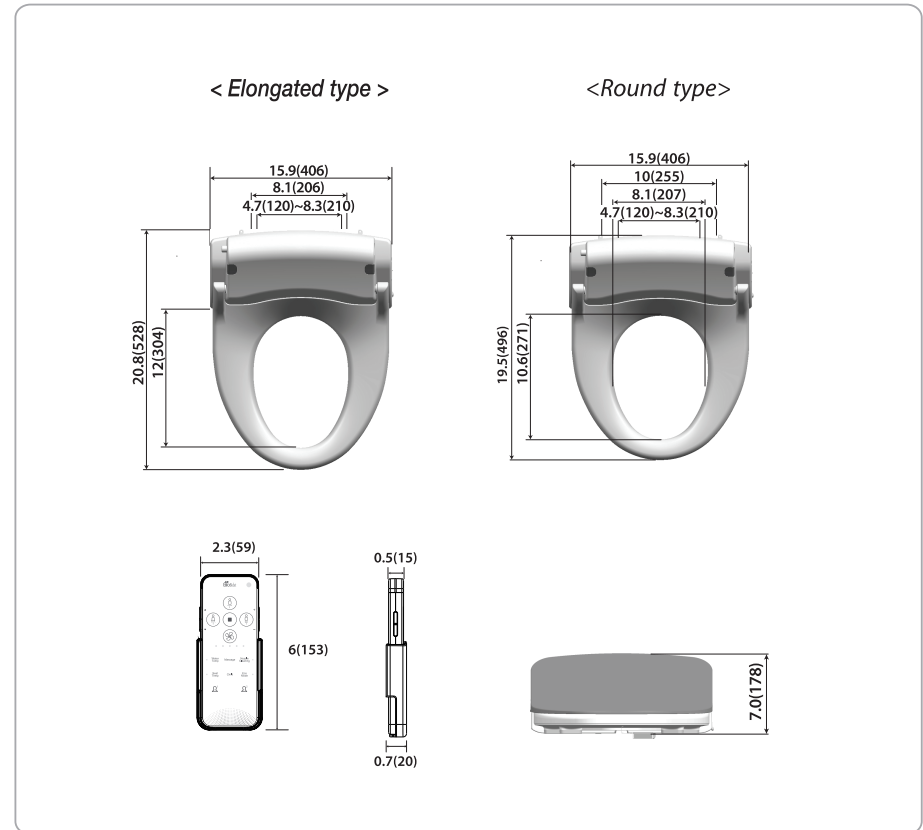
As such, any use of non Bio Bidet water filters is prohibited and will void the warranty for those Bio Bidet products.

Bio Bidet will not be responsible for any resulting damages or claims related to the misuse or distribution of non Bio Bidet filters.

08. Dimensions

■ Dimension diagrams

inch (mm)



09. Specifications

Item		BJW-770, BJW-770R	
Rated voltage		AC 120V, 60Hz	
Max. Power consumption		870W	
Power cord length		1.2m	
Water feed method		Directly connects to water pipe	
Recommended inlet water pressure		99~106.6psi	
Wash	Feed Volume	Wash	0.13~0.21gal/min
		Bidet	0.13~0.18gal/min
		Turbo	0.13~0.18gal/min
		Child	0.13~0.16gal/min
	Pressure control		5 levels
	Temperature control		4 levels (off-low-middle-high)
	Heater capacity		800W
	Safety device		Water level sensor, Thermal fuse, Bi-metal, Temperature sensor
Heated seat	Temperature control		4 levels (off-low-middle-high)
	Heater capacity		55W
	Safety device		Thermal fuse
Dry	Temperature control		Room temp. ~ 122°F
	Heater capacity		250W
	Safety device		Thermal fuse, Bi-metal
Feed water temp. tolerance range		37 ~ 95°F (recommended 54 ~ 95°F)	
Usage room temp. tolerance range		37 ~ 104°F (recommended 50 ~ 95°F)	
Dimension	Elongated (BJW-770)	15.9"(406) x 20.8"(528) x 7.0"(178)	
	Round (BJW-770R)	15.9"(406) x 19.5"(496) x 7.0"(178)	
Weight Net weight (Gross weight)	Elongated (BJW-770)	10.5 lb (15.2)	
	Round (BJW-770R)	10.2 lb (14.9)	

10. WARRANTY INFORMATION

- WARRANTY -

1. We hereby guarantee the product as follows in accordance with the regulation of consumer damage compensation.
2. In case of product failure, please contact Bio Bidet.
3. Product warranty will be effective for one year from date of purchase.

Product Name			Warranty Period
Model Name			One (1) year from date of purchase
Date Purchased			
SER.No.			
Customer's Address	Name		
	Tel.No		
Distributor's Address	Name		
	Tel.No.		

Regarding Product Warranty Regulation

1. We will repair the product free of charge in case it fails under normal operating circumstances in accordance with the user guide during the warranty period.
2. Although it is within the warranty period, we will charge the repair service fee etc. (repair + parts + travel expense) if it falls under the following cases:

Voiding Warranty

1. Defects occurred from the user's careless handling
2. Defects occurred from usage with incorrect power voltage (E.g. 220V was used to the 110V product.)
3. Defects occurred from improper repair done by a person other than our service engineers.
4. Defects occurred from Force Majeure (fire, salt, flood, etc.)
5. Failure or damage due to mishandling during operation after installed.
6. Defect occurred from interior modification at user's discretion.

Mail, email or fax the warranty form to:

BBC Innovation Corp.

7900 S Illinois Route 31 T) 847,458,2334
 Crystal Lake IL 60014 T) 877,339,5214
 www.biobidet.com F) 847,854,1296