



PRODIGY

OWNER'S MANUAL





PRODUCT INFORMATION

Important Safeguards.....5
Safety Guidelines.....7
Functions.....9
Economy Features.....10
Parts.....11
Remote Control.....13

PRODUCT OPERATION

Preparing for Use.....15
How to Use.....19
Maintenance.....29
Troubleshooting.....31
Specifications.....37

WARRANTY

Warranty.....39



When using electrical products, especially when children are present, basic safety precautions should always be followed, including the following:

READ ALL INSTRUCTIONS BEFORE USING

DANGER - To reduce the risk of electrocution:

- Do not use while bathing.
- Do not place or store product where it can fall or be pulled into a tub or sink.
- Do not place in or drop into water or other liquid.
- Do not reach for a product that has fallen into water. Unplug immediately.

WARNING - To reduce the risk of burns, electrocution, fire, or injury to the persons

- Close supervision is necessary when this product is used by, on, or near children or invalids.
- Use this product only for its intended use as described in this manual. Do not use attachments not recommended by the manufacturer.
- Never operate this product if it has a damaged cord or plug, if it is not working properly, if it has been dropped or damaged or dropped into water. Return the product to a service center for examination and repair.
- Keep the cord away from heated surfaces.
- Never block the air openings of the product or place it on a soft surface such as a bed or couch, where the air openings may be blocked. Keep the air openings free of lint, hair, and the like.
- Never use while sleeping or drowsy.
- Never drop or insert any object into any opening or hose.
- Do not use outdoors or operate where aerosol (spray) products are being used or where oxygen is being administered.
- Connect this product to a properly grounded outlet only. See Grounding Instructions.

SAVE THESE INSTRUCTIONS

Grounding Instructions.

This product should be grounded. In the event of an electrical short circuit grounding reduces the risk of electric shock by providing an escape wire for the electric current. This product is equipped with a cord having a grounding wire with a grounding plug. The plug must be plugged into an outlet that is properly installed and grounded.

DANGER

Improper use of the grounding plug can result in a risk of electric shock. If repair or replacement of the cord or plug is necessary, do not connect the grounding wire to either flat blade terminal. The wire with insulation having an outer surface that is green with or without yellow stripes is the grounding wire. Check with a qualified electrician or serviceman if the grounding instructions are not completely understood, or in doubt as to whether the product is properly grounded.

This product is for use on a nominal 120V circuit, and has a grounding plug illustrated in sketch A in Figure 1. A temporary adapter, which looks like the adapter illustrated in sketches B and C, may be used to connect this plug to a 2-pole receptacle as shown in sketch B if a properly grounded outlet is not available. The temporary adapter should be used only until a properly grounded outlet (sketch A) can be installed by a qualified electrician. The green colored rigid ear lug and the like extending from the adapter must be connected to a permanent ground such as a properly grounded outlet box cover. Whenever the adapter is used, it must be held in place by the screw.

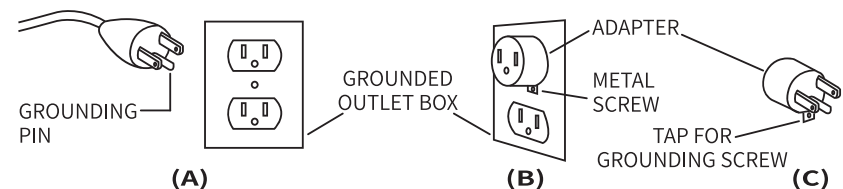


Figure 1.



WARNING

The following actions are not recommended and can cause product malfunctions and or safety hazards:

- Touching the power cord with wet hands.
- Placing fire sources near the product.
- Stepping on or placing heavy objects on the product.
- Blocking the dryer.
- Placing foreign objects into the toilet other than toilet paper.
- Cleaning the unit with harsh chemicals or detergents.

NOTICE

Observe electrical safety standards. Make sure the unit is properly grounded.

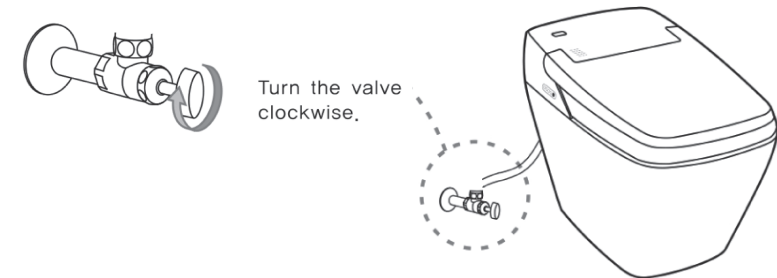
Discontinue use of the unit, unplug the power cable, and the shutoff valve in any of the following circumstances:

- Water is leaking from the main body or from the hose connections.
- The product is broken, cracked, or producing an unusual sound.
- The product is overheating, or emitting smoke, or a foul odor.

Continued use of the unit when it is not functioning properly can cause leaks or electric shock.

Connect the hose tightly to prevent leakage. If water leaks, close the shutoff valve immediately.

Make sure the temperature of the bathroom does not fall under 40°F. When water freezes, it can break the water supply line or internal components and cause malfunctions.





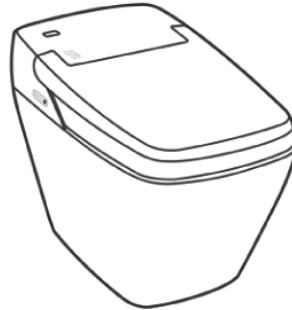
	Function	Descriptions
Standard	Posterior Wash	Cleanse posterior.
	Feminine Wash	Cleanse feminine area.
	Enema	Helps relieve constipation.
	Dry	Activates dryer.
	Water Pressure	Adjust water pressure.
	Nozzle Position	Adjust nozzle position.
	Oscillating	Cleanse with back and forth nozzle movement.
	Pulsating	Rhythmic stream of water for thorough cleansing.
	Rhythm	Combines oscillating and pulsating features.
	Seat Temperature	Adjust seat temp.
	Water Temp.	Adjust water temp.
	Dry Temp.	Adjusts dryer temp.
	Remote Control	Operates all bidet functions.
	Operation Light	Indicates current operation. (power, seat sensor, power saving, seat temp, water temp)
Water Saving	Full Flushing	-1.28 gallon flush*
	Small Flushing	-0.83 gallon flush*

	Function	Descriptions
Comfort	Deodorant	Reduces bathroom odors.
	Remote Control Flushing	Full flushing and small flushing available by remote control.
	Auto Flushing	Automatically flushes the toilet when the user stands up.
	Auto lid OPEN/ CLOSE (P770)	Stand in front of the toilet to automatically open the lid. Move away from the toilet to automatically close the lid.
	Night Light	Automatic sensors detect motion and activate the night light. This function can be enabled or disabled on the remote control.
Safety	Power Saving	Saves power when not in use.
	Anti-short Circuit	Automatically turns off power when a short circuit occurs.
	Burn Protecting	Seat temp. turns off to protect user from burns after 30 minutes of use.
	Antibacterial	The nozzle, seat and lid are specifically coated to protect against bacteria.
	Emergency Button	Emergency button bypasses the remote control. (power, posterior, feminine, auto flush)
	Manual Flush Button	Activates a manual flush. Can be used during a power failure.
	Self Checking	Automatically detects any malfunctions before use.
Sanitary	Nozzle Cleaning	Automatically cleans nozzle before & after use.
	Nozzle button	Extends nozzle for manual cleaning.
	Anti Pollutant Coating	The toilet bowl has a special non-stick coating.

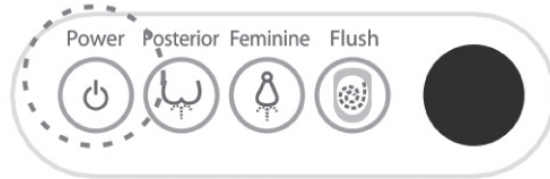


Power Saving Mode

- When active, the temperature will be maintained at 86°F. Using the seat disables this feature for one hour.

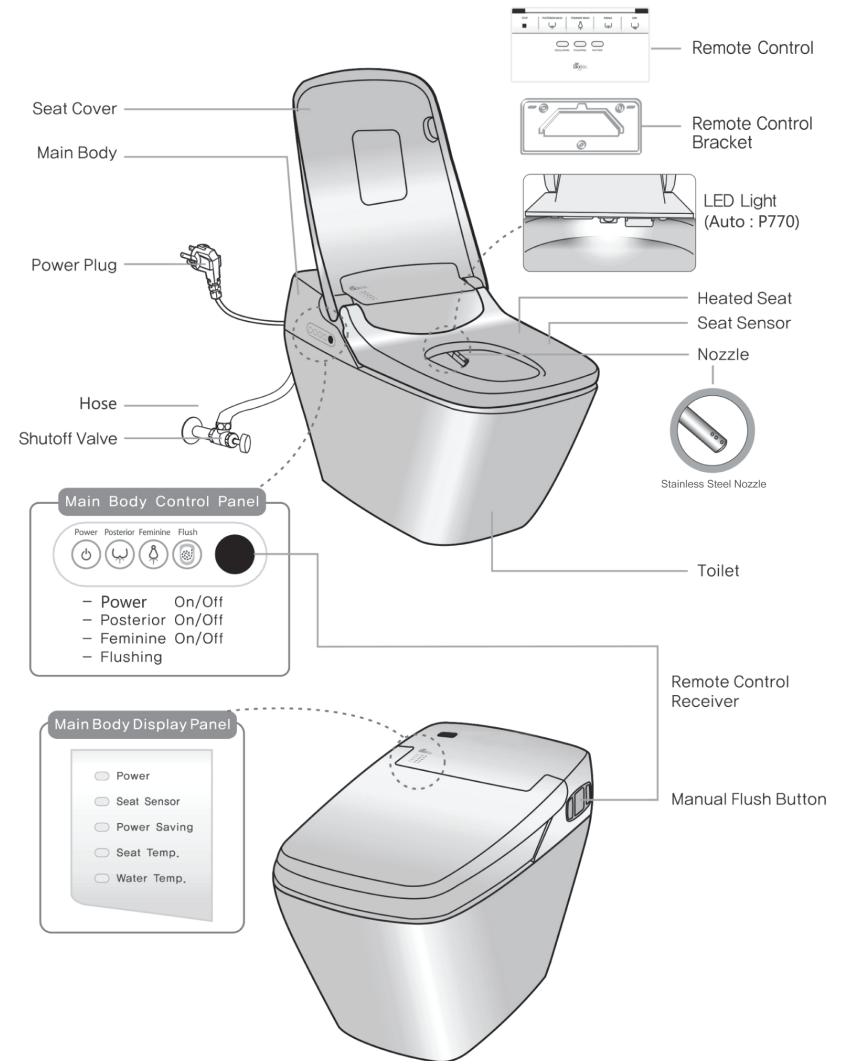
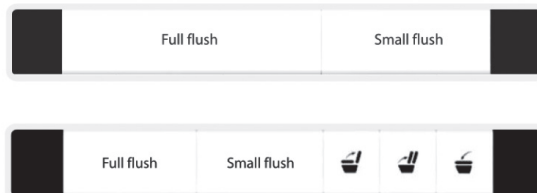


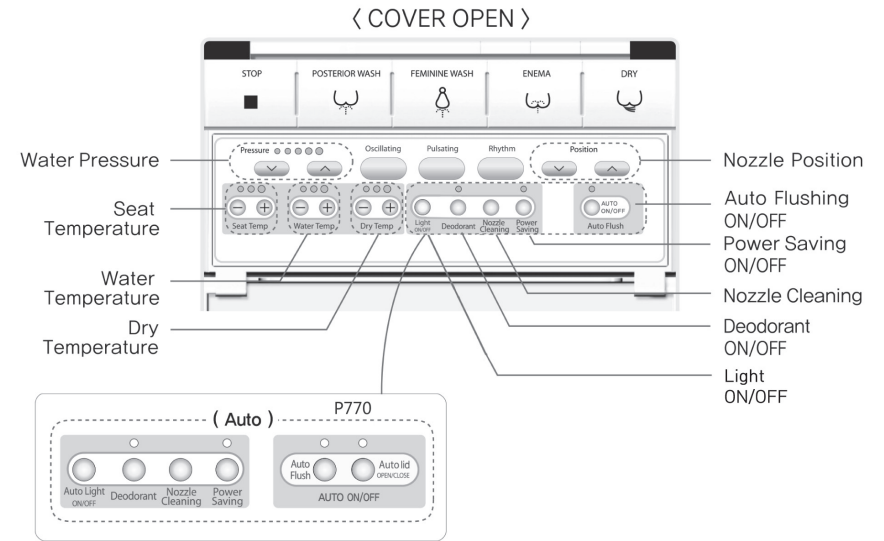
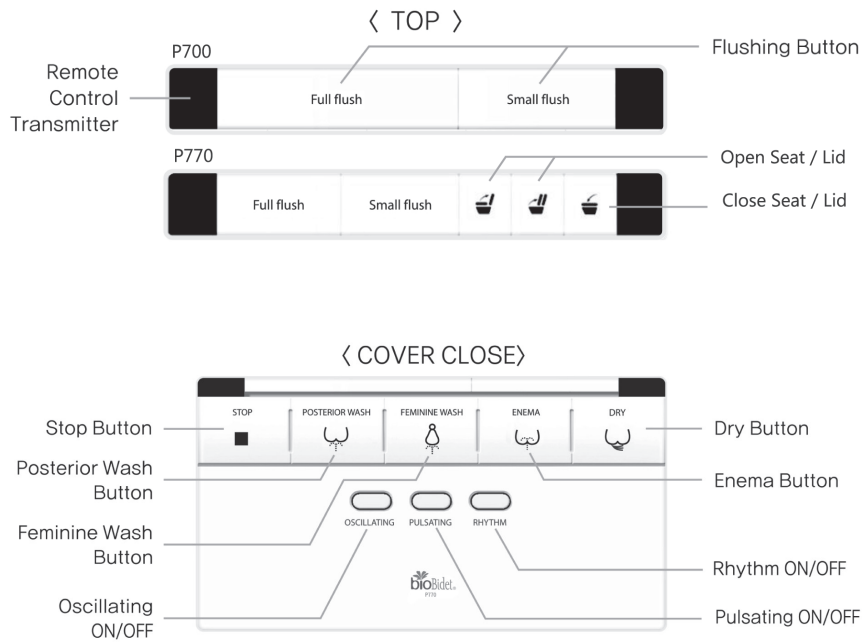
- Turn off the power during extended travel to save energy. (2+ days)



Use the preferred flush button.

- Save water by pressing the appropriate flush button for each use.



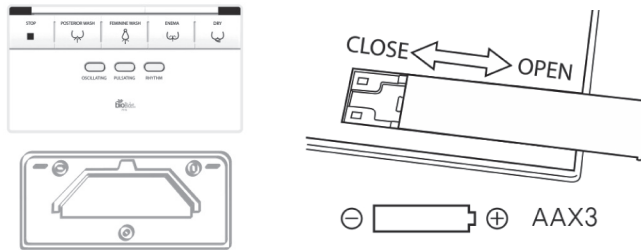




NOTICE:

Turn off the power on the main body when replacing batteries or cleaning the product.

1. Place the batteries into the remote control.



1. Remove the remote from the bracket by holding both sides and lifting up.
2. Open the battery cover on the back.
3. Put 3 AA batteries in order.
4. Close the cover.

2. Proper Battery Care

Observe the following to prevent battery breakage or leaks.

- Remove batteries not using the remote control for a long time.
- Do not use rechargeable batteries.
- Settings (temperature, auto flush) may reset after replacing the batteries. Configure the settings again.

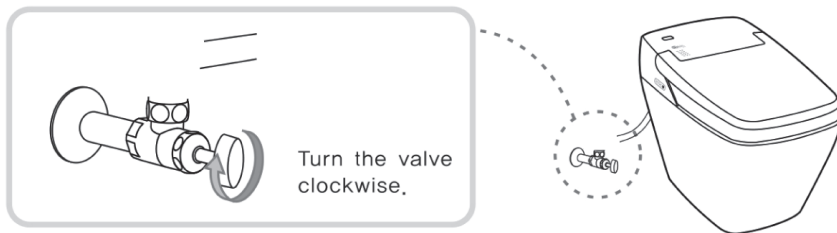
Check if the power plug is connected.



PREPARING FOR USE (CONT.)

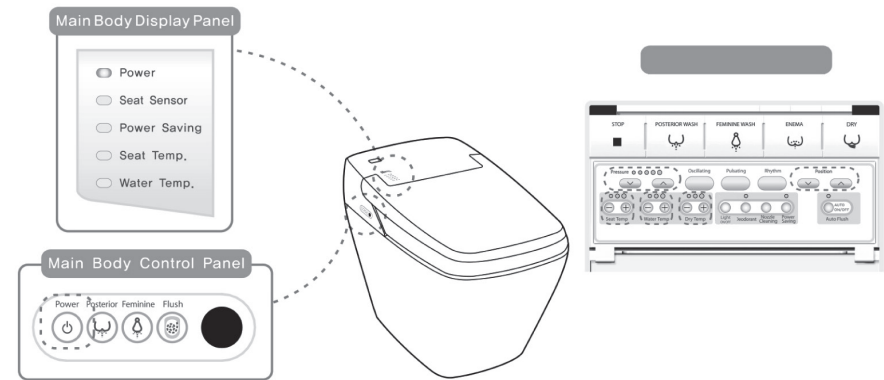
3. Adjust water flow with the shutoff valve

- If the water pressure is too high, water may splash or overflow when flushing the toilet.
- Turn the water shutoff valve clockwise to reduce pressure.



4. Check the display panel

1. Is the operation light on?
 - If not on, press the Power button to turn on the light.
2. Is the seat light on?
 - If not on, open the remote control cover and press Seat Temperature to turn it on.





1. Sit on the seat

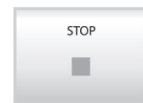
- The sensor light will turn on.
- Only operates after being occupied.

2. Functions

- Press one of the cleansing functions above on the remote control.
- Adjust the nozzle position and water pressure to your preferred settings.
- Each function operates for one minute.



- Dry operates dry feature for 3 minutes.



3. Stop

- Stop all cleaning and dry functions.

4. Flush



Optional Comfort Settings

1. Option 1: Oscillating

Nozzle moves back and forth to cleanse.

1. Press the Posterior Wash or Feminine Wash button to wash.
2. Press the Oscillating Button to move the nozzle while washing.
3. Press the Oscillating button again to stop Oscillating.

2. Option 2: Pulsating

Stream water more rhythmically.

1. Press the Posterior Wash or Feminine Wash button to wash.
2. Press the Pulsating Button to make the spray pulsate while washing.
3. Press the Pulsating button again to stop Pulsating.

3. Option 3: Rhythm

Combines oscillating and pulsating.

1. Press the Posterior Wash or Feminine Wash button to wash.
2. Press the Pulsating Button to make the spray pulsate while washing.
3. Press the Pulsating button again to stop Pulsating.

Notice

Sit towards the center of the seat to prevent water from splashing.



Adjusting Temperature

The temperature of the seat and dryer can be adjusted with the remote control.

1. Open the remote control cover.

2. Adjust the temperature

- Use the +/- button to adjust the temperature of the seat, water, and dryer up to 3 levels.

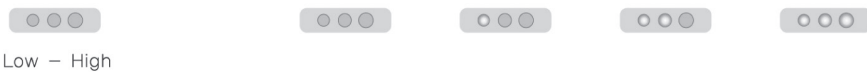
Seat Temperature



Water Temperature

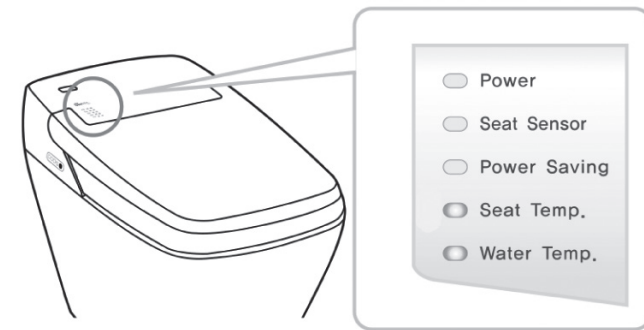


Dryer Temperature



Note

- When you activate the seat temperature, the seat light will be turned on in the display area of the main body.
- When you activate the water temperature, the water light will be turned on in the display area of the main body.





Adjusting and Using the Functions

The water pressure and nozzle position can be adjusted with the remote control.

1. Adjust Water Pressure

- The water pressure can be adjusted up to 5 different levels with up and down buttons. Adjust the water pressure to your preference.

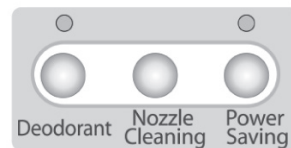


2. Adjust Nozzle Position

- While using the Posterior or Feminine wash, press up or down button to adjust the nozzle position to your body.
- The nozzle begins at the middle position each time you activate a wash.

3. Clean the Nozzle

- Press the Nozzle Cleaning button for 3 seconds to extend the nozzle without sitting on the seat.
- Using a toothbrush, clean the nozzle and press the Nozzle Cleaning button again when finished.



4. Deodorant

- Press the Deodorant button to turn on the function.
- It deodorizes automatically when sitting. (It works for up to 20 minutes while occupied, and another 1 minute after standing up.)
- Press the Deodorant button again to turn off the function.

5. Power Saving

- Press the Power Saving button to turn on the power saving light on the main body.
- In power saving mode, the water temperature and seat temperature will be maintained at 86°F
- To cancel the power saving mode, press the Power Saving button again to turn off the display light.
- Power saving mode automatically turns off when seated and turns back on when you stand up.

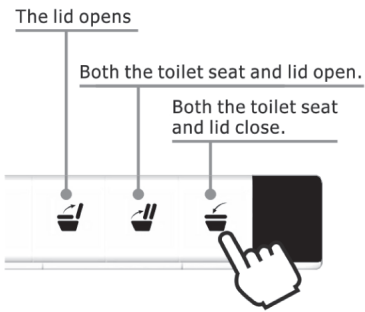


Seat and Lid Operation (P770 Only)

There are 2 ways to operate the seat and lid: Automatic and remote control.

1. Remote Controlled Open/Close of Toilet Seat and Lid

- Choose the seat or lid function by pressing the corresponding button on the remote control.

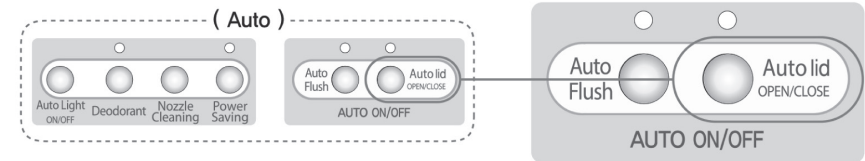


2. Automatic Open/Close of Toilet Seat and Lid

- When you stand in front of the toilet, the lid automatically opens, and when you move away from the toilet, the lid automatically closes.

Activate the automatic open/close feature on your remote. (P770 Only)

- Press the auto lid button to turn the function on. The light indicates the function is on. Press again to turn the function off.



Auto Seat and Lid open/close button.



Flushing

There are 3 ways to flush the toilet: Remote Control, Auto Flush, and Manual Flush.

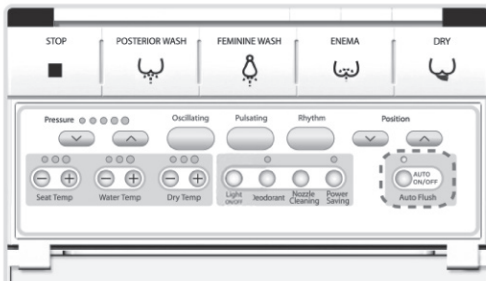
1. Remote Control Toilet Flush

- Press the full flush or small flush button on the remote control.



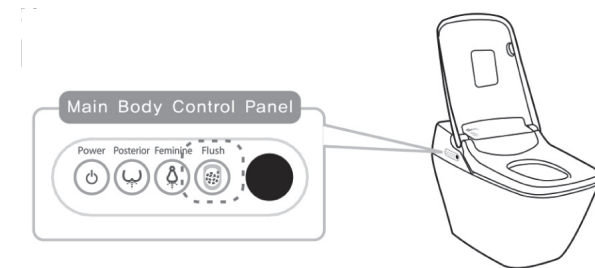
2. Auto Flush

- Press the Auto Flush button to turn the light on. The toilet will automatically flush after standing up.



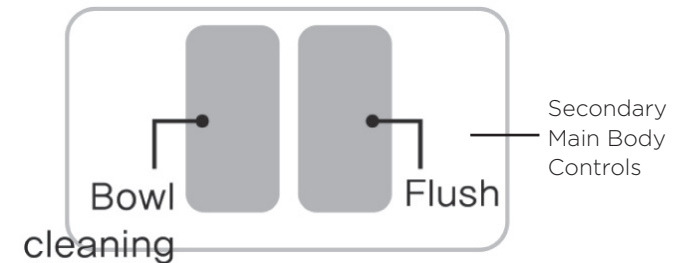
3. Manual Flush

- Press the Flush button on the control panel.



4. Bowl Cleaning

- Press the Bowl cleaning button for 3 seconds.
- Press the Flush button for 5 seconds.
- Press the Bowl Cleaning button again for 3 seconds.



- Bowl cleaning function cleans the inner ceramic bowl.
- Flush functions jets high pressure water to flush down debris in the bowl.



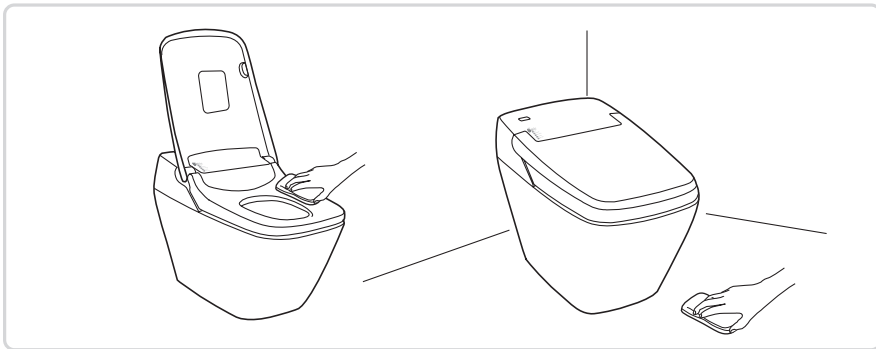
Carefully read the following procedures.

Turn off the Auto Flush Feature before performing any maintenance.

Regular Maintenance

- Routine Cleaning- clean with a wet cloth.
- Deep Cleaning- Clean with a soft wet cloth and mild detergent. Dry thoroughly after cleaning.

Do not use harsh detergents when cleaning to avoid discoloring.



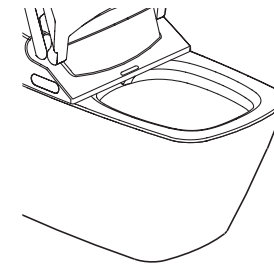
OR: It is recommended to clean with the BioMist Bidet Cleaner method.

Deodorizer Filter (as necessary)

Take the following steps when cleaning the deodorizer filter.

1. Remove the filter

- Locate the filter beneath the bidet and pull it forward.

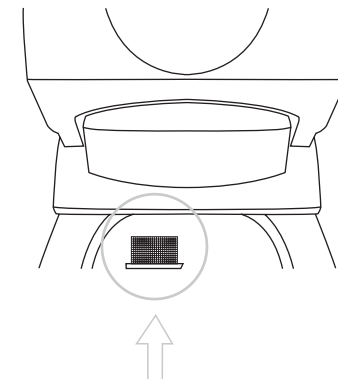


2. Clean

- Using a toothbrush, remove dust particles from the filter.

3. Re-secure the filter

- Push the filter back until it clicks.
- Do not use without the filter.





If the product is not functioning properly, check the following troubleshooting tips. If the problem persists, please contact Bio Bidet support department.

Power Supply		
Trouble	Possible Causes	Solution
The unit is not working.	Is the power out or circuit breaker off?	Wait until the power is restored, or turn on the circuit breaker.
	Is the operation light on the display panel off?	Turn on the power in the control panel of the main body.

Posterior Wash, Feminine Wash, Enema, Kid Function		
Trouble	Possible Causes	Solution
Water is not spraying out.	Is the shutoff valve closed?	Open the valve
	Is the seat sensor being activated?	Make skin contact with the seat sensor.
	Is the hose crimped?	Reposition the hose.
Water pressure is too low	Is the water pressure set too low?	Increase the water pressure and clean the nozzle
	Is there any debris in the hose?	Turn off the water shutoff valve and clean the hose out.
Water is cold.	Is the temperature set to a low level or turned off?	Adjust with the +/- buttons on the remote control.
	Is power saving mode turned on?	The water temperature is set lower and increases when seated.
Water stops in the middle of cleansing.	The cleaning functions automatically and stops after five minutes of use.	Press a cleansing function button again.
	Is the seat sensor activated?	Make skin contact with the seat sensor.
Water flows into the toilet for a few seconds near the nozzle when first sitting down.	When the seat sensor is on, it releases some water before spraying. If you change the position while seated, the sensor will turn on and off, and release some additional water.	-



Seat Sensor		
Trouble	Possible Causes	Solution
The posterior wash or deodorant function works without sitting on the seat	Is the seat sensor blocked with a wet towel?	Remove the wet towel.
	Is the seat sensor wet?	Wipe the water with a dry cloth.

Auto Flushing		
Trouble	Possible Causes	Solution
Auto flushing is not working	Is the auto flushing turned off? (When off, the flushing indication on the remote control display panel is off).	Press auto flushing button on the remote control again to turn it on.

Heated Seat		
Trouble	Possible Causes	Solution
The seat is not warm.	Is the seat temperature set too low?	Adjust seat temperature with +/- buttons on the remote control.
	Is power saving mode turned on?	The seat is kept at a lower temperature until activated

Remote Control		
Trouble	Possible Causes	Solution
Remote Control is not working	Are the batteries running low?	Replace old batteries with new ones.
	Are the batteries inserted incorrectly?	Re-insert the batteries correctly.
	Is the transmitter or receiver blocked?	Remove the objects blocking transmitters.
	Is the transmitter or receiver dirty?	Wipe the affected areas clean.
	Is the seat sensor activated?	Make skin contact with the seat sensor.

Flushing by Remote Control		
Trouble	Possible Causes	Solution
I can't flush the toilet with remote control.	Are the batteries running low?	Replace old batteries with new ones.
	Did you press the button consecutively?	This function cannot be used consecutively. You will need to wait for about 10 seconds for the next flush.
	Is the transmitter or receiver dirty?	Wipe the affected areas clean.



Deodorization		
Trouble	Possible Causes	Solution
Deodorizer is not working at all.	Is the seat sensor activated?	Refer to the location of Seat Sensor on page 11.
Deodorizer is not very effective.	Is the deodorizer filter clogged?	Clean the deodorizer filter.
Deodorizer is not working at all.	Is the main body light on?	Set the deodorizer filter.

Drying		
Trouble	Possible Causes	Solution
Dryer temperature is too low.	Is the air temperature set to a low level?	Adjust the air temperature with the +/- buttons on the remote control.
The dryer stops in progress.	Did you activate another function?	Press the Dry button again.
	It may stop if the user changes position while sitting.	Refer to the location of Seat Sensor on page 11.
The warm air drying function is not working at all.	Is the seat sensor activated?	Refer to the location of the Seat Sensor on page 11.

Power Saving		
Trouble	Possible Causes	Solution
Power saving is not working	Is it unplugged? Did you change the batteries?	The setting may take up to 24 hours to function normally.
	Did you change the batteries? Did the power go out?	Press the Power Saving button or the Auto On/Off button again to turn it on.

Others		
Trouble	Possible Causes	Solution
The toilet is not flushing sufficiently.	Is the shutoff valve open enough?	Open the shutoff valve sufficiently.
	Is there any debris in the hose?	Turn off the water shutoff valve and clean out the hose.
There is no water for flushing.	Is the water shutoff valve closed?	Open the shutoff valve sufficiently.
	Is the water supply suspended?	Wait until the water supply is resumed.



Model No.		P700	P770
Rated Voltage		Rated Voltage	
Rated Power Consumption		703W	
Power Cord Length		5 feet	
Toilet	Water Consumption	Full Flush: ~ 1.28 gallons* Small Flush: ~ 0.83 gallons*	
	Flushing System	Siphon jet, Tornado flushing	
Wash Unit	Posterior Wash	Max 0.31 gal/min	
	Feminine Wash	Max 0.31 gal/min	
	Enema	Max 0.31 gal/min	
	Water Temp.	Adjustable 93°F - 104°F	
	Water Tank	0.31	
	Heater Capacity	600W	
	Safety Device	Thermal cutoff, Overheating prevention circuit, Temp. sensor	
Heated Seat	Seat Temp.	Adjustable 93°F - 104°F	
	Heater Capacity	55W	
	Safety Device	Thermal cutoff, Temperature sensor	
Dry	Hot Air Temp.	Adjustable 93°F - 104°F	
	Heater Capacity	250W	
	Safety Device	Thermal cutoff, Temp. overheat preventer (manual recovery bimetal)	
Deodorization		Automatic deodorizer	
Lighting		LED light	Auto LED light
Auto Lid		-	Auto lid
Water pressure		Min: 1.5 kgf/cm ² (0.15 Mpa) [with 20l/min flow] Max: 7.5 kgf/cm ² (0.75 Mpa)	

Model No.		P700	P770
Waterproof rating		IPX4	
Inlet water Temp.		41°F - 95°F	
Ambient Temp.		41°F - 104°F	
Dimension		W 410mm x L 720mm x H 525mm	
Weight		58 lbs (Bidet: 16 lbs, Toilet: 42lbs)	59 lbs (Bidet: 17 lbs, Toilet: 42lbs)

Average results based upon fixed water pressure of 40 psi



WEE Directive

This marking shown on the product or its literature, indicates that it should not be disposed with other household wastes at the end of its working life. To prevent possible harm to the environment or human health from uncontrolled waste disposal, please separate this from other types of wastes and recycle it responsibly to promote the sustainable reuse of material resources.

Household users should contact either the retailer where they purchased this product, or their local government office, for details of where and how they can take this item for environmentally safe recycling.

Business users should contact their supplier and check the and conditions of the purchase contract. This product should not be mixed with other commercial wastes for disposal.



We warrant our products to be free from manufacturing defects under normal use and service for a period of time limited to 3 years from the date of purchase.

This warranty covers 100% of all Bio Bidet parts and Bio Bidet labor costs associated with the product.

Our obligation to you under this warranty is limited to parts, repair, or replacement, at our option, of defective products or parts, provided the products were properly installed and used in accordance with the instructions. We reserve the right to make inspections in order to determine the cause of any defects. We will not charge for labor or parts in connection with warranty repairs or replacement performed by our technicians. We are not responsible for the cost of removal, return, 3rd party repair services, and/or re-installation of products.

This warranty does not apply to:

1. Damage or loss from a fire, earthquake, flood, etc.
2. Damage or loss resulting from any unreasonable use, abuse, negligence, or improper maintenance.
3. Damage or loss from improper installation, removal, repair, or modification.
4. Damage or loss resulting from sediment or other matters contained in your water system.

For more warranty service information, please contact Bio Bidet.

Only the original purchaser may submit a claim under this warranty.

This warranty is our only warranty covering your product. Repair or replacement as provided under this warranty shall be the exclusive remedy available to you. We shall not be responsible for the loss of the product or other incidental or consequential damage or expenses you may incur, or for labor or other costs due to installation, removal, third party repairs, or other expenses not previously stated. Except to the extent prohibited by applicable, any implied warranties, including that of merchantability or fitness for use, are expressly limited to the duration of this warranty.

Please keep your purchase record to validate your warranty.

The following information may be necessary for various services:
Purchaser Name, Address, Telephone Number, Product Model, Purchaser Date.

Support agents are available Mon-Fri, 9:00 AM - 5:00 PM CST

Thank You



Technical Support/Customer Service
7900 S Route 31 Crystal Lake, IL 60014
T: 847.458.2334
U.S. TOLL FREE: 877.339.5214

support@biobidet.com

www.biobidet.com