



PRODIGY

P500

OWNER'S MANUAL





PRODUCT INFORMATION

Safety Instructions.....4
Proper Usage.....6
Parts.....7
Preparation.....8
Parts.....11

PRODUCT OPERATION

How to Use.....10
Maintenance.....12
Troubleshooting.....14
Specifications.....16

WARRANTY

Warranty.....18



Use this appliance only for its intended use as described in this manual. When using electric appliances, basic safety precautions should always be followed, including the following:

READ ALL INSTRUCTIONS BEFORE USING

Warning- To reduce the risk of burns, electric shock, fire, or injury:

1. Do not touch the power cord with wet hands or use while bathing.
2. Do not splash water or detergent on the main body or power plug.
3. Unplug immediately if dropped into water. Do not reach into the water.
4. Handle the power cord carefully. Do not forcibly bend or pull it.
5. Do not use a damaged power cord or electrical outlet, and do not plug the appliance in until water is connected.
6. Keep the power cord away from heated surfaces.
7. Close supervision is necessary when this appliance is used by, on, or near children.
8. Never drop or insert any objects into any openings or hoses. Only throw toilet paper into the toilet.
9. Do not let hair, lint, or similar materials block any openings on the appliance.
10. Do not step on or place heavy objects on the seat, lid or main body.
11. Do not use outdoors.
12. Connect this product to a properly grounded outlet only. Do not exceed the rated voltage of the outlet.

13. Do not place hands or clothing on the warm air dryer.

14. Do not place fire sources near the appliance, such as cigarettes.

15. Avoid exposing to product to direct sunlight for extended periods of time.

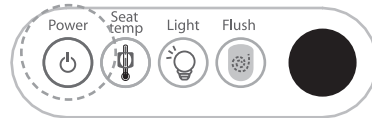
This product should only be serviced by qualified technicians. Consult customer support if you have any questions. Consult customer support if you have any questions.

E: support@biobidet.com

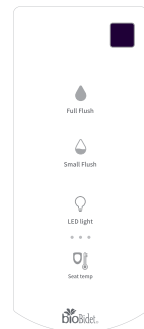
P: 847.458.2334



- Turn off the power when the product will not be used for an extended period of time.

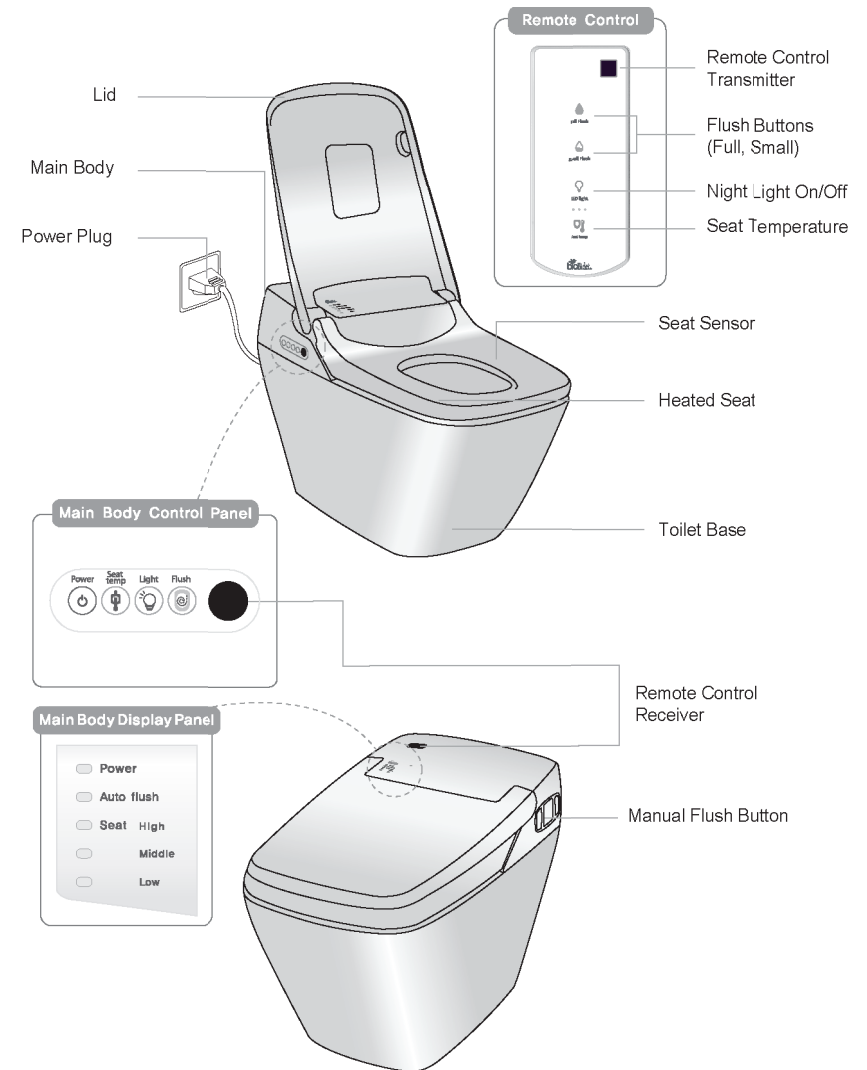


- Save water by pressing the corresponding flush button.



Function	Description
Seat Sensor	Detects when a user is seated
Seat Temperature	Adjust the seat to a preset temperature. (93.2°F, 98.6°F, 104°F)
Night Light	Turn the night light on or off.
Full Flush	Activate a full flush (1.25 gallons*)
Small Flush	Automatically activates the proper size flush when user is finished. (0.84 gallons*)
Auto Flush	Automatically activates the proper size flush when user is finished.
Manual Flush	Allows for manual flushing during a power outage.
Smart Protection	Turns off the heated seat when a user is detected for over 30 minutes.
Anti Bacterial	Specially coated seat and lid to protect against bacteria.
Self Check	Automatically detects any malfunctions before use.

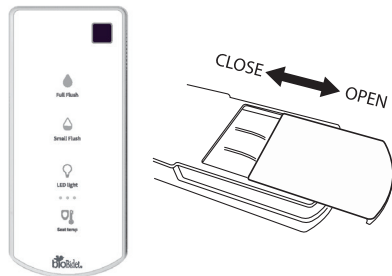
*See specifications for flush details.





1. Place the batteries into the remote control.

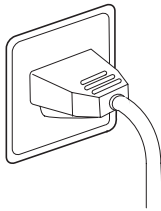
- Open the battery cover on the back.
- Put the 3 AA batteries in the proper position.
- Close the cover.



Battery Tips

- Use the same battery type when replacing old batteries.
- Remove the batteries when the product will not be used for an extended period of time.
- Settings may be initialized after replacing batteries. Configure the settings again.

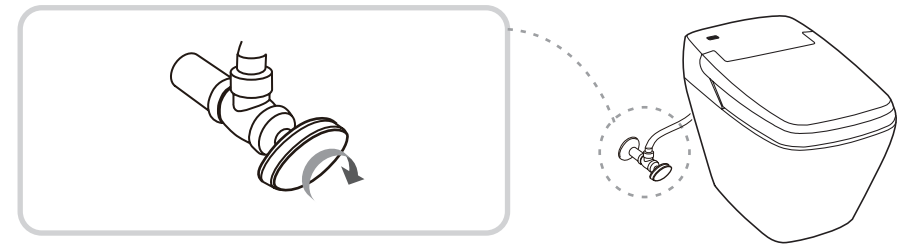
2. Plug in the power cord



Notice: Turn off the power on the main body when replacing batteries or cleaning the product.

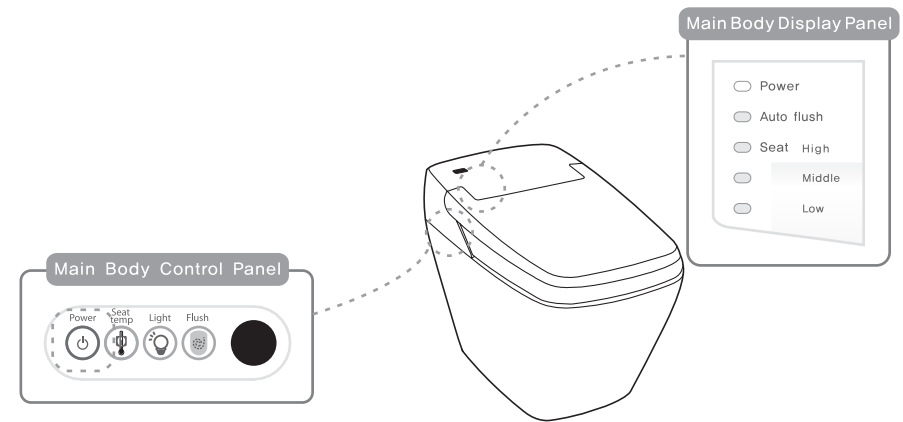
3. Adjust the water flow with the shutoff valve.

- If the water pressure is too high, water may splash or overflow when flushing. Reduce the water pressure by turning the water shutoff valve.



4. Check the display panel

- Is the power indicator on? If not, press the button to turn on the product.
- Is the seat indicator on? If not, press the seat temp button to activate the heated seat.





1. Sit on the seat

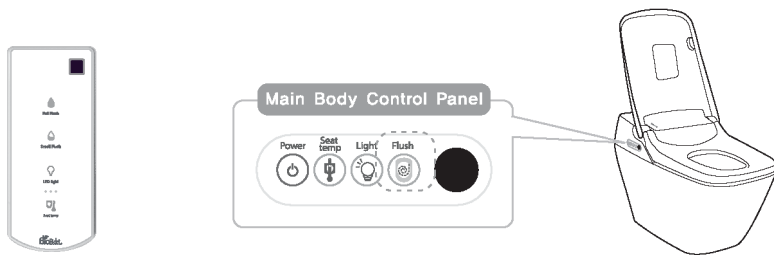
- Skin contact is required to activate the seat sensor

2. Seat temperature

- Press the seat temperature button on the remote or main body controls to cycle between preset temperatures. (93.2°F, 98.6°F, 104°F)

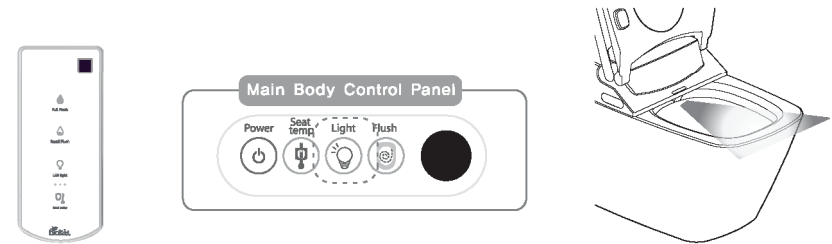
3. Flush the toilet

- Stand up to activate the auto flush, or press the desired flush button on the remote or main body controls.



4. Night light

- Press the night light button on the remote or main body controls to turn the light on or off.



Notice: The Flush button cannot be used continuously. Wait about 10 seconds for next flush

5. Manual Flushing

Use the manual flush buttons during a power outage.

- Press the Bowl button for 3 seconds.
- Press the Jet button for 5 seconds.
- Press the Bowl Flush button again for 3 seconds.



- The Bowl button circulates water around the toilet bowl.
- The Jet button flushes debris away.



Press the button on the main body controls for 3 seconds to cancel the auto flush function before performing maintenance.

Cleaning

Clean the Prodigy with a soft wet cloth. If necessary, a neutral cleaning solution may be used. Be sure to wipe the product dry when finished.

Make sure the remote control transmitter and receiver are clear of any dust or debris.

Extended Travel

Unplug the power cord if the product will not be used for an extended period of time.

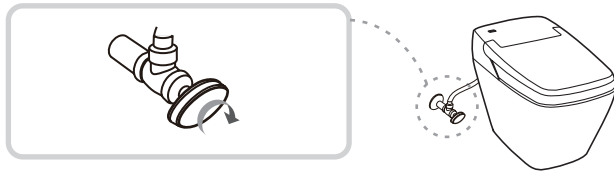


If your product is not operating properly, please refer to the following information. If the problem persists, contact customer support.

Please unplug the power cord when requesting for repair service

ATTENTION

If water is leaking, immediately close the water shutoff valve.



Power Supply		
Trouble	Possible Causes	Solution
The unit is not working.	Is the circuit breaker turned off?	Turn on the circuit breaker.
	Is power indicator light on?	Press the power button to turn the unit on.

Flushing by Remote Control		
Trouble	Possible Causes	Solution
I can't flush the toilet with the remote control.	Are the batteries running low?	Replace the batteries
	Did you press the button multiple times.	Wait 10 seconds before activating another flush.
	Is the receiver or transmitter dirty?	Clean the receiver or transmitter.

Others		
Trouble	Possible Causes	Solution
Debris is not completely flushing down.	Is the shutoff valve open enough?	Open the shutoff valve sufficiently.
Water is not flushing.	Is the shutoff valve closed?	Open the shutoff valve sufficiently.
Water is leaking at the hose connection.	Is the hose loose?	Tighten the hose.



Model No.		Prodigy P500
Rated Power		AC 120V, 60Hz, 65 W
Power Cord Length		5 feet (1.5 meters)
Toilet	Water Consumption	Full flush: 1.28 gallons* Small flush 0.83 gallons*
	Flushing System	Dual Jet Flushing
Heated Seat	Seat Temperature	Adjustable, 34°C - 40°C /93.2°F - 104°F
	Heat Capacity	55 W
	Safety Device	Thermal cutoff, Temperature sensor
Water pressure		Min: 1.5 kgf/cm (with 20 l/min flow) Max: 7.5 kgf/cm
Inlet Water Temperature		5°C - 35°C / 41°F - 95°F
Ambient Temperature		5°C - 40°C / 41°F - 104°F
Dimension		W 410mm x L 720mm x H 525mm

*Average test results based upon a fixed water pressure of 40 psi.



Our goal is to provide you with the highest quality products and service possible.

If you have any questions about your product, please feel free to contact support.

We warrant our products to be free from manufacturing defects under normal use and service for a period of time limited to 3 years from the date of purchase.

This warranty covers 100% of all Bio Bidet parts and Bio Bidet labor costs associated with the product.

Our obligation to you under this warranty is limited to parts, repair, or replacement, at our option, of defective products or parts, provided the products were properly installed and used in accordance with the instructions. We reserve the right to make inspections in order to determine the cause of any defects. We will not charge for labor or parts in connection with warranty repairs or replacement performed by our technicians. We are not responsible for the cost of removal, return, 3rd part repair services, and/or re-installation of products.

This warranty does not apply to:

1. Damage or loss from a fire, earthquake, flood, etc.
2. Damage or loss resulting from any unreasonable use, abuse, negligence or improper maintenance.
3. Damage or loss from improper installation, removal, repair, or modification.
4. Damage or loss resulting from sediment or other matters contained in your water system.

For more warranty service information, please contact Bio Bidet.

Only the original purchaser may submit a claim under this warranty

This warranty is our only warranty covering your product. Repair or replacement as provided under this warranty shall be the exclusive remedy available to you. We shall not be responsible for the loss of the product or other incidental or consequential damage or expenses you may incur, or for labor or other costs due to installation removal, third party repairs, or other expenses not previously stated. Except to the extent prohibited by applicable, any implied warranties, including that of merchantability or fitness for use, are expressly limited to the duration of this warranty.

Please keep your purchase record to validate your warranty.

The following information may be necessary for various services: Purchaser Name, Address, Telephone Number, Product Model, Purchase Date.

Support agents are available
Mon-Fri, 9:00 AM - 5:00 PM CST

847.458.2334
support@biobidet.com
www.biobidet.com

Thank You



Technical Support/Customer Service
7900 S Route 31 Crystal Lake, IL 60014
T: 847.458.2334
U.S. TOLL FREE: 877.339.5214

support@biobidet.com
www.biobidet.com