

FLOW[®]
by *BEMIS*

**GROVE MOTION
ACTIVATED
USER MANUAL**





**Questions?
We're here to help.**

847.458.2334
support@biobidet.com
www.biobidet.com

04

PRODUCT INFORMATION

Important Safeguards
Overview & Parts
Functions & Features

09

GETTING STARTED

Installation Types
Installation Guide
Pop-Up Drain Installation
How To Use

18

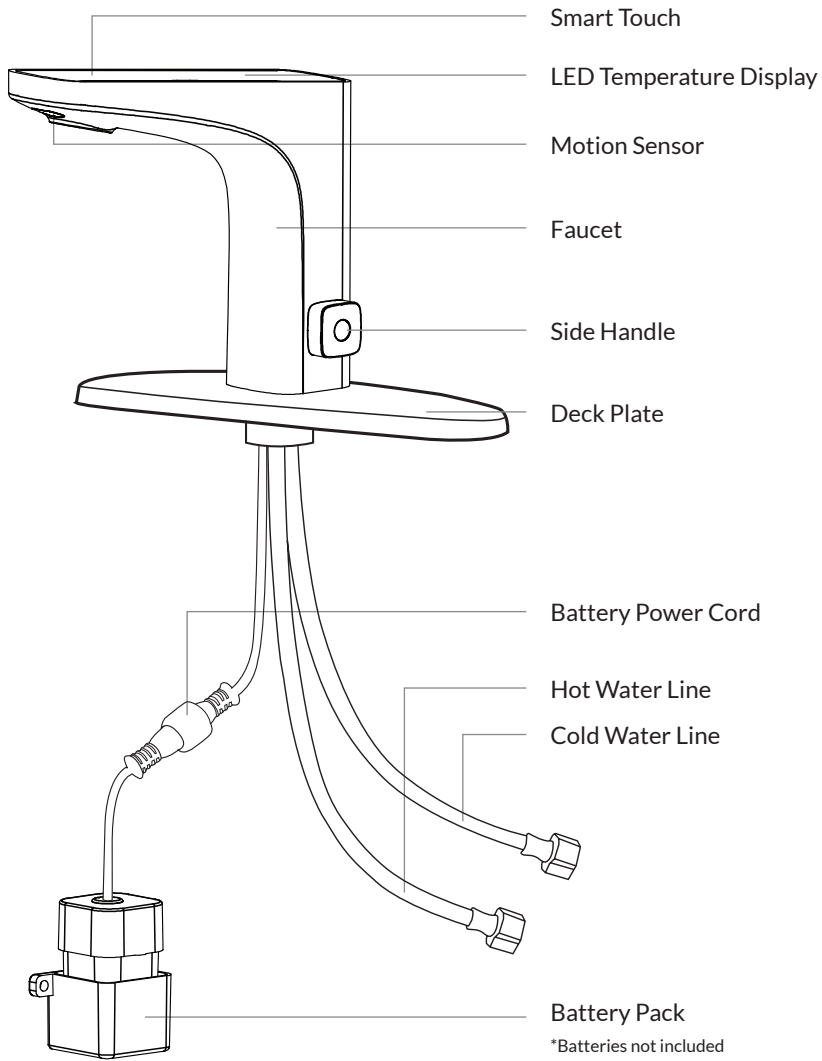
WARRANTY

Troubleshooting Guide
Warranty
Customer Support
Notes

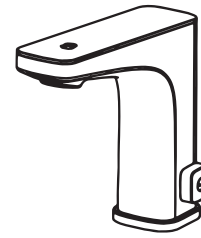
PLEASE OBSERVE THE FOLLOWING PRECAUTIONS AND INSTRUCTIONS BEFORE INSTALLATION AND USE.

- Powered by 4 AA batteries (not included). Make sure to install the batteries properly (+/-).
- Use a dry soft cloth to wipe the touch sensor as needed.
- The sensor window indicator will flash every 3-4 seconds when the battery is low. Replace the batteries as needed.
- The faucet will automatically turn off when the batteries are depleted.
 - Immediately check for any leaks.
 - Continue to check for leaking throughout the first hour of installation.
 - If leaking occurs, turn off water supply and discontinue use immediately.

INNOVATION FOR EVERYDAY LIFE™



Grove Parts List



Grove Faucet



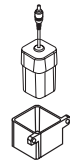
Hot & Cold Hoses



Rubber Gasket & Metal Washer



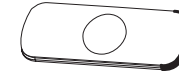
Screw Set



Battery Pack & Bracket



3M Adhesive



Deck Plate



Pop-Up Drain

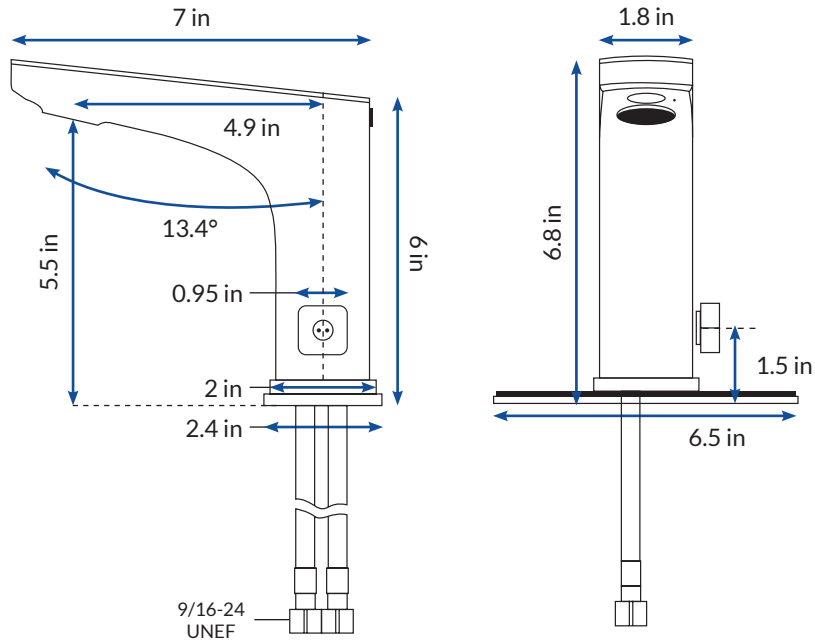
Recommended Installation Tools



Wrench



Phillips Screwdriver



Features

- Motion Activated
- Touch Activated
- LED Temperature Display
- Adjustable Temperature
- Battery Powered
- Drip-Free Ceramic Cartridge
- Single & Three-Hole Installation

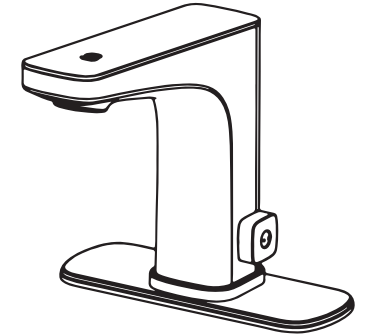
Finishes

- Chrome
- Brushed Nickel
- Oil Rubbed Bronze
- Champagne

2 Installation Types



Single Hole Installation



Three Hole Installation

1. Single Hole or Three Hole Installation

Single Hole - Securely attach the hoses to the faucet. Put the hoses and data cable through the faucet mounting hole and fix the faucet on the sink.

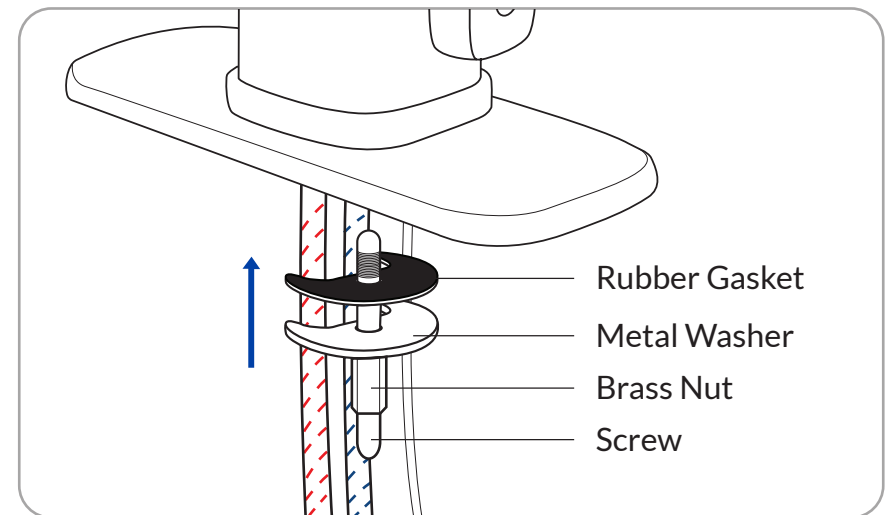
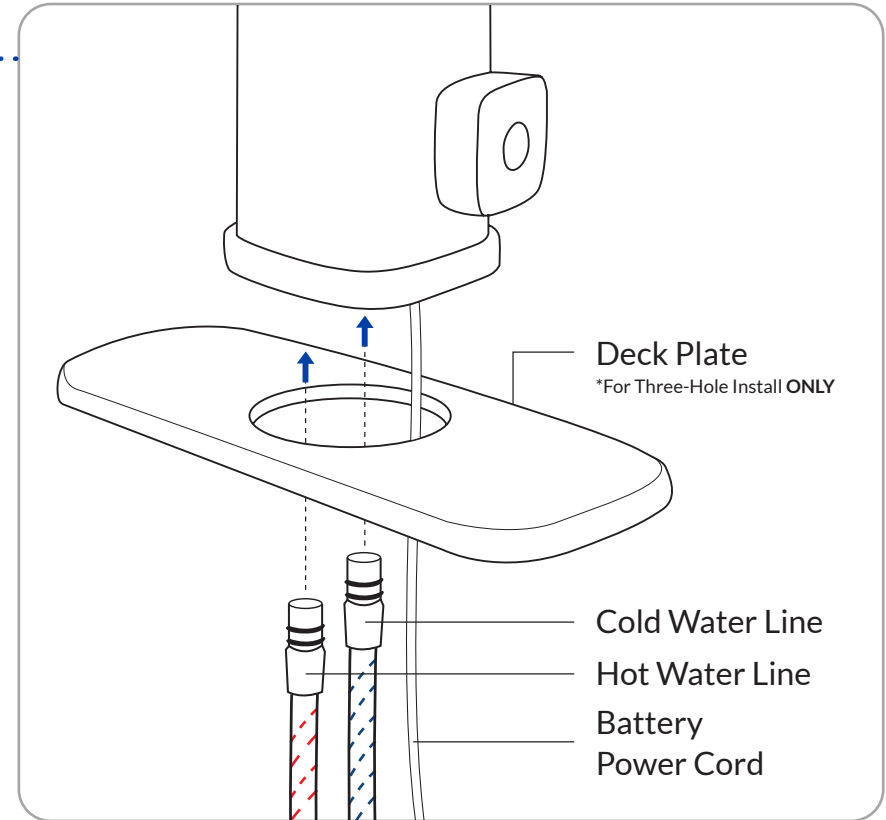
- Make sure to install the hot and cold water lines in accordance with the markings.
- Tighten with a Phillips screwdriver.

Three Hole - Securely attach the hoses to the faucet. Put the hoses and data cable through the deck plate and faucet mounting hole. Fix the faucet on the sink.

- Make sure to install the hot and cold water lines in accordance with the markings.
- Tighten with a Phillips screwdriver.

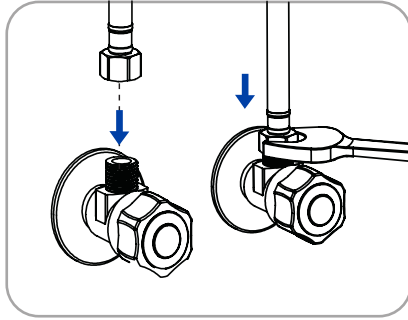
2. Install Rubber Gasket

Slide the rubber gasket first and the metal washer second. Then install the nut onto the screw. Tighten the nut using an adjustable wrench.

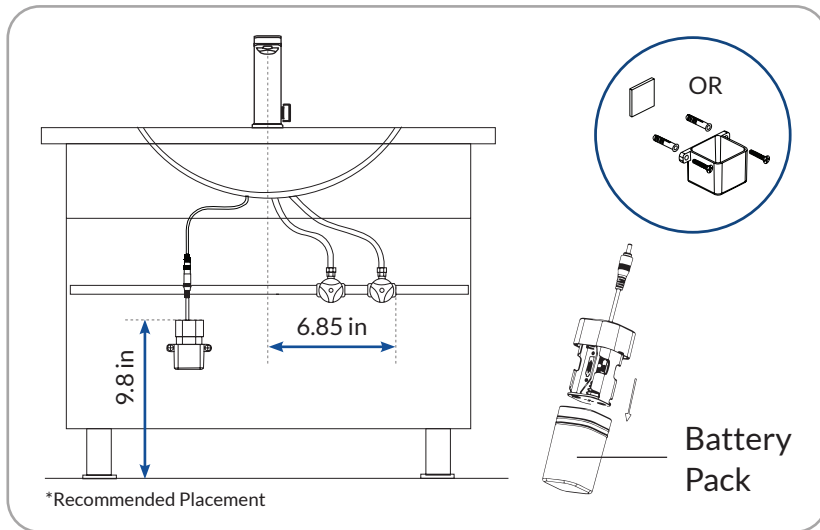


3. Connect Supply Lines

Connect the hot & cold supply lines onto the matching water valves and secure the connection with an adjustable wrench.

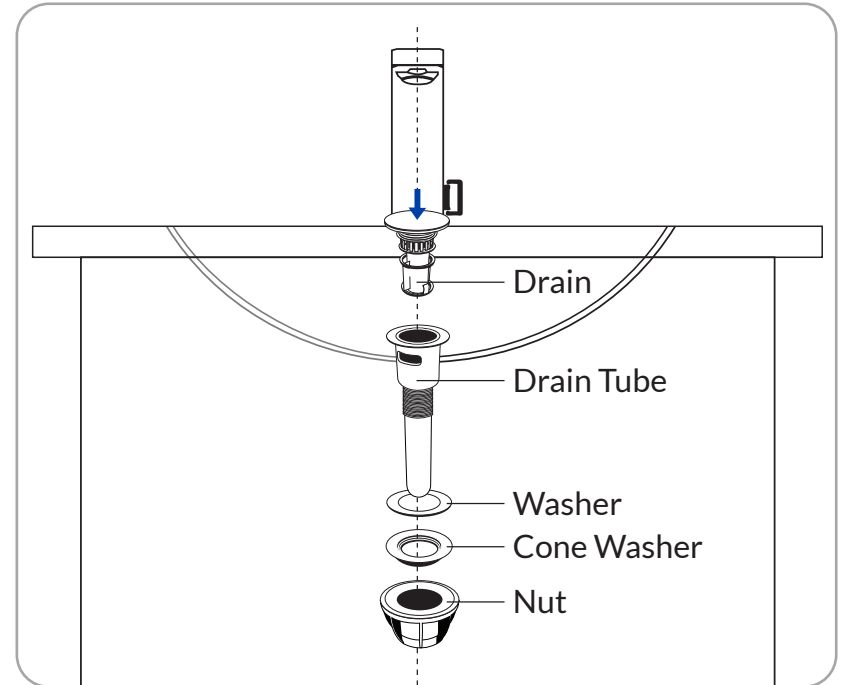


4. Install Battery Box



1. Secure the battery bracket by using 3M adhesive or screws.
2. Insert 4 AA batteries into the battery pack, and place the battery pack into the battery bracket.
3. Connect the data cables and secure them hand tight. When completed, turn the hot & cold water lines counterclockwise to turn the water back on.

NOTE: The pop-up drain is fully assembled in the box. Disassemble the pop-up drain so that each component is separate before installing.



After removing the existing drain from your sink, follow the instructions below to install the pop-up drain.

1. Insert the drain tube through the sink.
2. Slide the washer and cone washer up the drain tube from beneath the sink.
3. Secure the drain tube to the sink using the nut.
4. Press the drain into the drain tube.
5. Connect the drain tube to the bathroom plumbing. This process may vary depending on the sink and plumbing of your home. Some methods include threaded connections, while others use compression fittings.

Motion Sensor

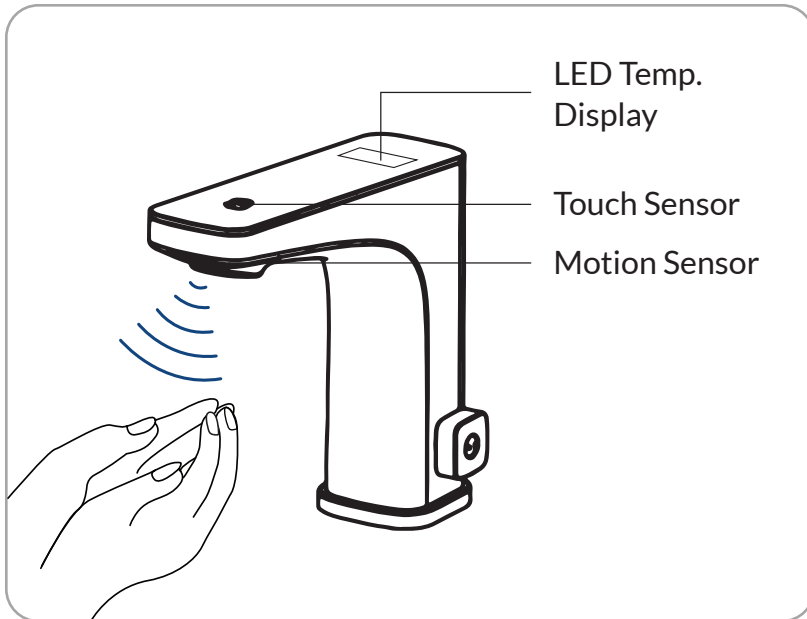
Place your hands beneath the motion sensor to activate the flow of water. The water will automatically turn off when you move your hands away.

Touch Sensor

Tap the sensor to activate the flow of water. Tap again to turn off. The water will automatically turn off after 3 minutes.

Side Handle

Use the side handle to set the water temperature to your liking.



Problem	Cause	Solution
Faucet does not power on	Power cable unplugged	Unplug and re-plug the power cord. Ensure the connection is secure.
	Low battery	Replace with a new battery of the same brand. Ensure that the positive and negative terminals of the battery are properly installed. (Do not mix with old batteries.)
Sensors not functioning	Motion Sensor Obstructed	Wipe the motion sensor clean.
	Touch sensor failing.	Unplug and re-plug the power cord.
Low water pressure	Water supply obstruction	Make sure the water shut-off valve is fully open and there are no kinked hoses. Clean the faucet spout.
Water is leaking	Loose connection or missing gasket.	Double check all connections are secure and include a gasket.

Please contact customer support with any questions!

Phone: 847.458.2334
 Email: support@biobidet.com
 Chat: www.biobidet.com

5 YEAR FULL COVERAGE WARRANTY

100% Coverage on all parts and labor for the entire product for all five years from original date of purchase.

Our obligations under this warranty are limited to repair or replacement, at our option, of products or parts found to be defective, provided that such products were properly installed and used in accordance with instructions. Bio Bidet Innovation LLC reserves the right to make such inspections as may be necessary in order to determine the cause of the defect. Bio Bidet Innovation LLC will not charge for labor or parts in connection with warranty repairs or replacements. Bio Bidet Innovation LLC is not responsible for the cost of removal, return, and/or re-installation of products. This warranty does not apply to the following items: Damage or loss sustained in a natural calamity such as fire, earthquake, flood, thunder electrical storm, etc. Damage or loss resulting from any unreasonable use, misuse, abuse, negligence, or modification of the product. Damage or loss resulting from sediments or foreign matter contained in a water system. Damage or loss resulting from improper installation or from installation of a unit in a harsh and/or hazardous environment. This warranty gives you specific legal rights. You may have other rights which vary from state to state.

To obtain warranty repair service under this warranty, you must take the product or deliver it prepaid to our service facility together with a letter stating the problem, or contact a distributor or products service contractor. This written warranty is the only warranty made by Bio Bidet Innovation LLC. Repair or replacement as provided under this warranty shall be the exclusive remedy available to the purchaser. We shall not be responsible for loss of the product or for other incidental, special, or consequential damages or expenses incurred by the purchaser, or for labor other cost due to installation or removal or costs of repairs by others, or for any other expense not specifically stated above. Except to the extent prohibited by applicable law, any implied warranties, including that of merchantability or fitness for use, are expressly limited to the duration of this warranty. Some states do not allow limitations on how long an implied warranty lasts, or the exclusion or limitation of incidental or consequential damages, so the above limitation and exclusion may not apply to you.

How to Obtain Service

To obtain service under this warranty, you must contact us to obtain an RMA (Return Merchandise Authorization) number. Proof of purchase in the form of a copy of your original receipt must accompany your request.

FLOW BY BEMIS

7900 S IL Route 31 Crystal Lake IL 60014
T: 847.458.2334
F: 847.854.1296

support@biobidet.com
www.biobidet.com

THANK YOU!

9.1.22

FLOW[®]
by *BEMIS*

Customer Support

T: 847.458.2334

TOLL FREE: 877.339.5214

7900 S IL Route 31 Crystal Lake, IL 60014

support@biobidet.com

www.biobidet.com

