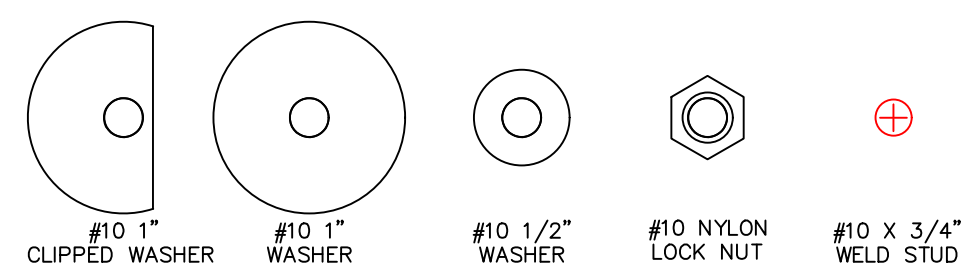


LEGEND

- ADAPTER PLATE (11 GAUGE)
- BACK PLATE (11 GAUGE)
- MOUNTING STUD (10-32x3/4")
- SEALING GASKET
- EXISTING HMI BEZEL
- EXISTING HMI CUTOUT
- NEW HMI BEZEL



THIS DRAWING IS PROPERTY OF HEARN ENGINEERING, LLC. THIS DRAWING MAY ONLY BE USED FOR MATERIAL SUPPLIED BY HEARN ENGINEERING, LLC.

Existing HMI  
 Allen Bradley PanelView Standard #2711-T10C9  
 Bezel: 14.567 [370] W x 11.102 [282] H    Cutout: 13.307 [338] W x 10.118 [257] H

New HMI  
 Allen Bradley OptixPanel #2800S-120DS-N1B  
 Bezel: 13.189 [335] W x 10.63 [270] H    Cutout: 12.402 [315] W x 9.843 [250] H

REVISIONS		DRAWING NAME	
NO.	DESCRIPTION	DATE	BY
1	INITIAL ISSUE	03/13/2024	
DESCRIPTION			DATE
HMI Adapter Plate			Mar 13 2024 4:50AM
www.hmiadapterplate.com			INCHES