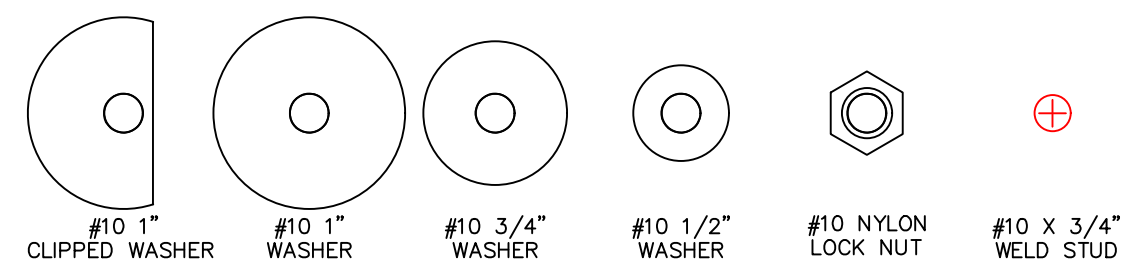




LEGEND

- ADAPTER PLATE (11 GAUGE)
- BACK PLATE (11 GAUGE)
- MOUNTING STUD (10-32x3/4")
- SEALING GASKET
- EXISTING HMI BEZEL
- EXISTING HMI CUTOUT
- NEW HMI BEZEL



THIS DRAWING IS PROPERTY OF HEARN ENGINEERING, LLC. THIS DRAWING MAY ONLY BE USED FOR MATERIAL SUPPLIED BY HEARN ENGINEERING, LLC.

Existing HMI
 Allen Bradley Panel PC 6200P (Versaview 5400) #6200P-22WS3*1
 Bezel: 21.457 [545] W x 14.685 [373] H Cutout: 20.827 [529] W x 14.055 [357] H

New HMI
 Phoenix Contact Panel PC #VL3 PPC 21.5"
 Bezel: 20.945 [532] W x 13.622 [346] H Cutout: 20.551 [522] W x 13.228 [336] H

REVISIONS			DRAWING NAME	
NO.	DESCRIPTION	DATE	DRAWING NAME	
1	INITIAL ISSUE	07/24/2023	D064251 AP5017-5029-IN	
INFORMATION			DATE: Jul 24 2023 1:50PM	
			UNIT: INCHES	

