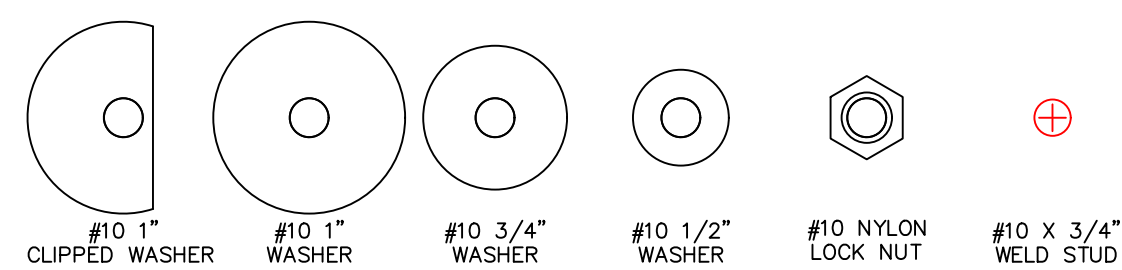


LEGEND

- ▨ ADAPTER PLATE (11 GAUGE)
- ▨ BACK PLATE (11 GAUGE)
- ▨ MOUNTING STUD (10-32x3/4")
- ▨ SEALING GASKET
- ▨ EXISTING HMI BEZEL
- ▨ EXISTING HMI CUTOUT
- ▨ NEW HMI BEZEL



THIS DRAWING IS PROPERTY OF HEARN ENGINEERING, LLC. THIS DRAWING MAY ONLY BE USED FOR MATERIAL SUPPLIED BY HEARN ENGINEERING, LLC.

Existing HMI
 Allen Bradley PanelView Plus 7 #2711P-B10C22D9P
 Bezel: 15.157 [385] W x 9.921 [252] H Cutout: 13.189 [335] W x 8.819 [224] H

New HMI
 Allen Bradley PanelView Plus 7 #2711P-T12W22D9P
 Bezel: 13.386 [340] W x 9.449 [240] H Cutout: 12.283 [312] W x 8.583 [218] H

REVISIONS		DATE	DRAWING NAME
1	INITIAL ISSUE	04/06/2023	D062191 AP3013-3005-IN
DESCRIPTION			DATE
			Apr 6 2023 2:35PM
DRAWING NUMBER			UNIT
			INCHES



www.hmiadapterplate.com