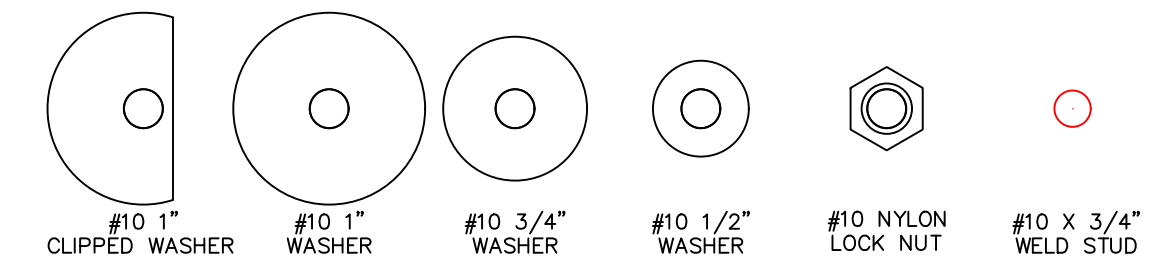


- LEGEND
- ADAPTER PLATE (11 GAUGE)
 - BACK PLATE (11 GAUGE)
 - MOUNTING STUD (10-32x3/4")
 - SEALING GASKET
 - EXISTING HMI BEZEL
 - EXISTING HMI CUTOUT
 - NEW HMI BEZEL



THIS DRAWING IS PROPERTY OF HEARN ENGINEERING, LLC. THIS DRAWING MAY ONLY BE USED FOR MATERIAL SUPPLIED BY HEARN ENGINEERING, LLC.

Existing HMI
 Allen Bradley PanelView Plus #2711P-K10****
 Bezel: 15.709 [399] W x 9.764 [248] H Cutout: 14.764 [375] W x 8.819 [224] H

New HMI
 Allen Bradley PanelView Plus 7 #2711P-T10C22D9P
 Bezel: 11.693 [297] W x 9.921 [252] H Cutout: 10.591 [269] W x 8.819 [224] H

REVISIONS		DATE	DRAWING NAME
1	INITIAL ISSUE	04/05/2023	D062184 AP3010-2028-IN
DESCRIPTION			INFORMATION
www.hmiadapterplate.com			Apr 5 2023 10:27AM
			INCHES