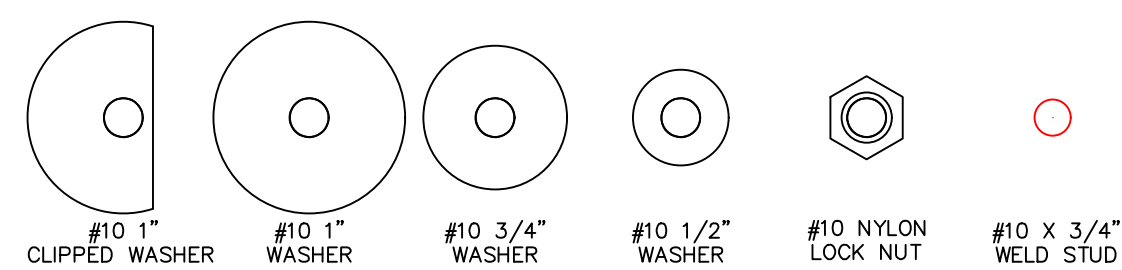


LEGEND

- ADAPTER PLATE (11 GAUGE)
- BACK PLATE (11 GAUGE)
- MOUNTING STUD (10-32x3/4")
- SEALING GASKET
- EXISTING HMI BEZEL
- EXISTING HMI CUTOUT
- NEW HMI BEZEL



THIS DRAWING IS PROPERTY OF HEARN ENGINEERING, LLC. THIS DRAWING MAY ONLY BE USED FOR MATERIAL SUPPLIED BY HEARN ENGINEERING, LLC.

Existing HMI: Allen Bradley #2711-T10G8 Bezel Size: 14.567"W x 11.102"H Cutout: 13.307"W x 10.118"H
 New HMI: Allen Bradley #2715P-T10C01 Bezel Size: 11.693"W x 9.921"H Cutout: 10.591"W x 8.819"H

REVISIONS	DATE	DRAWING NAME
1	02/15/2023	AP3017-2028-BP
2	3/7/2023	

www.hmiadapterplate.com

Feb 15 2023 4:13PM

INCHES