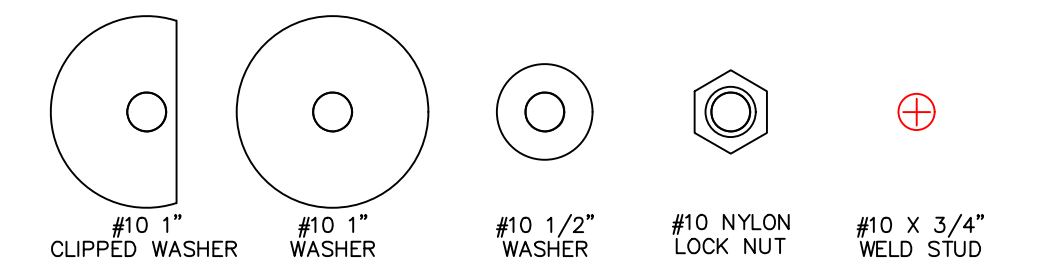


- LEGEND
- ADAPTER PLATE (11 GAUGE)
 - BACK PLATE (11 GAUGE)
 - MOUNTING STUD (10-32x3/4")
 - SEALING GASKET
 - EXISTING HMI BEZEL
 - EXISTING HMI CUTOUT
 - NEW HMI BEZEL



THIS DRAWING IS PROPERTY OF HEARN ENGINEERING, LLC. THIS DRAWING MAY ONLY BE USED FOR MATERIAL SUPPLIED BY HEARN ENGINEERING, LLC.

Existing HMI: Allen Bradley #2711-T10 Bezel Size: 14.567"W x 11.102"H Cutout: 13.307"W x 10.118"H
 New HMI: Allen Bradley #2711P-T12W2 Bezel Size: 13.386"W x 9.449"H Cutout: 12.283"W x 8.583"H

REV	DESCRIPTION	DATE	APPROVED
1	INITIAL ISSUE	02/27/2020	
2	ADD CLIPPED WASHERS	04/20/2020	

www.hmiadapterplate.com

Feb 27 2020 2:16PM

INCHES