



## Installation

### Stainless Hardware

If you ordered a stainless DIN plate, use caution when installing the locknuts. We recommend applying anti-seize to the studs and locknuts. If you are using a drill, go slow and don't apply extra force in order to avoid friction heat. Galling will occur with stainless hardware if you apply extra force, install with a high-speed drill, over torque the nuts, and/or don't use a lubricant. The stainless is soft and will deform causing galling/cold weld.

### Installation Torque

Tighten the lock nuts to 24 in-lb. (2 ft-lb). The plate should be secure and the gasket should be evenly compressed. Be careful not to over tighten. If using a drill, finish the tightening by hand. Using an impact gun can potentially damage the studs.

### Rating:

- Steel: NEMA 12, 13, 1
- Stainless: NEMA 4X, 4, 12, 13, 1
- IP66

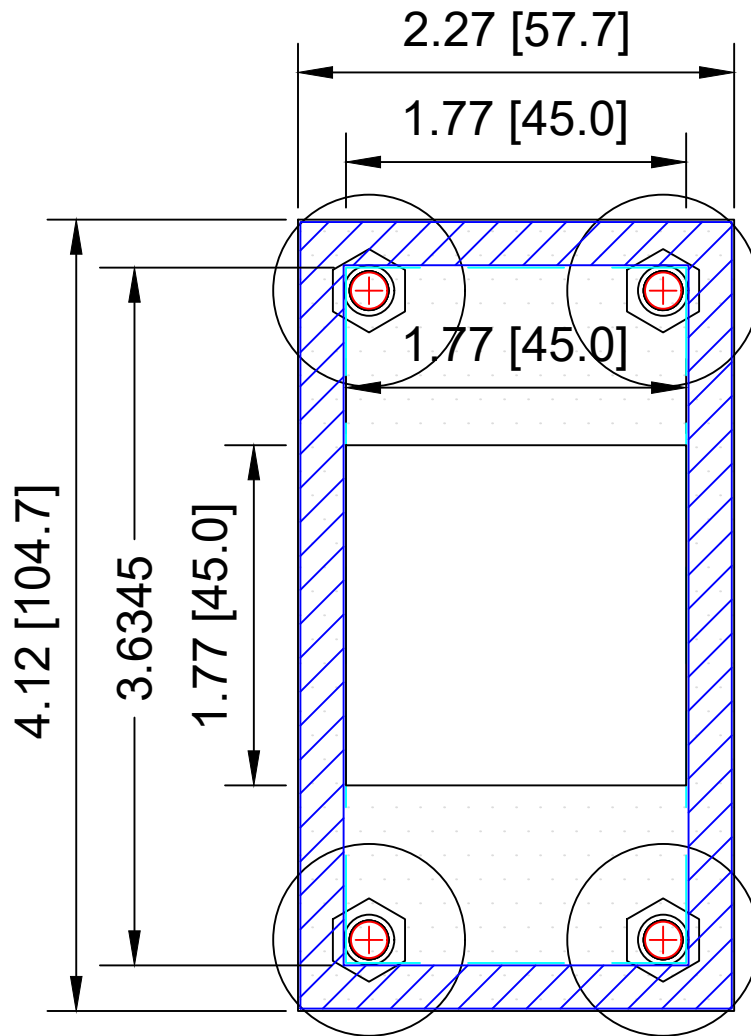
If you have any issues with your installation, please contact us.

Sales@HMIAdapterPlate.com

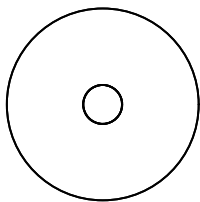
www.HMIAdapterPlate.com

(610) 871-0811

Panel Meter Part Numbers				
Part Number	Steel	304SS	316SS	Description
CP1053-0000-IN	-ST-DG-GK	-SS-00-GK	-16-00-GK	Cover Plate - 1/2 DIN
AP1053-1049-IN	-ST-DG-GK	-SS-00-GK	-16-00-GK	Adapter Plate - 1/2 DIN to 1/4 DIN
AP1053-1048-IN	-ST-DG-GK	-SS-00-GK	-16-00-GK	Adapter Plate - 1/2 DIN to 1/8 DIN
AP1053-1047-IN	-ST-DG-GK	-SS-00-GK	-16-00-GK	Adapter Plate - 1/2 DIN to 1/16 DIN
AP1053-1046-IN	-ST-DG-GK	-SS-00-GK	-16-00-GK	Adapter Plate - 1/2 DIN to 1/32 DIN
CP1049-0000-IN	-ST-DG-GK	-SS-00-GK	-16-00-GK	Cover Plate - 1/4 DIN
AP1049-1048-IN	-ST-DG-GK	-SS-00-GK	-16-00-GK	Adapter Plate - 1/4 DIN to 1/8 DIN
AP1049-1047-IN	-ST-DG-GK	-SS-00-GK	-16-00-GK	Adapter Plate - 1/4 DIN to 1/16 DIN
AP1049-1046-IN	-ST-DG-GK	-SS-00-GK	-16-00-GK	Adapter Plate - 1/4 DIN to 1/32 DIN
CP1048-0000-IN	-ST-DG-GK	-SS-00-GK	-16-00-GK	Cover Plate - 1/8 DIN
AP1048-1047-IN	-ST-DG-GK	-SS-00-GK	-16-00-GK	Adapter Plate - 1/8 DIN to 1/16 DIN
AP1057-1046-IN	-ST-DG-GK	-SS-00-GK	-16-00-GK	Adapter Plate - 1/8 DIN to 1/32 DIN (Horizontal to Horizontal)
AP1048-1046-IN	-ST-DG-GK	-SS-00-GK	-16-00-GK	Adapter Plate - 1/8 DIN to 1/32 DIN (Vertical to Horizontal)
CP1047-0000-IN	-ST-DG-GK	-SS-00-GK	-16-00-GK	Cover Plate - 1/16 DIN
AP1047-1046-IN	-ST-DG-GK	-SS-00-GK	-16-00-GK	Adapter Plate - 1/16 DIN to 1/32 DIN
CP1046-0000-IN	-ST-DG-GK	-SS-00-GK	-16-00-GK	Cover Plate - 1/32 DIN



1/8 DIN to 1/16 DIN Adapter Plate



#10 1"  
WASHER



#10 NYLON  
LOCK NUT



#10 X 3/4"  
WELD STUD

LEGEND

	ADAPTER PLATE (11 GAUGE)
	MOUNTING STUD (10-32x3/4")
	SEALING GASKET
	EXISTING HMI CUTOUT

THIS DRAWING IS PROPERTY OF HMI ADAPTER PLATE, LLC. THIS DRAWING MAY ONLY BE USED FOR MATERIAL SUPPLIED BY HMI ADAPTER PLATE, LLC.

**HMI**  
Adapter Plate  
www.hmiadapterplate.com

DESCRIPTION	DATE
1 INITIAL ISSUE	5/5/2024

DIN AP1048-1047-IN

1/8 DIN to 1/16 DIN Adapter Plate

UNITS  
INCHES