



Cool Mist

Air Humidifier, ideal for child and elderly care.

INSTRUCTIONS MANUAL



TYL-CF2530







Cool Mist

Air Humidifier, ideal for child and elderly care.



FEATURES AND SPECIFICATIONS

Benefits

Ultrasonic Humidifier will put moisture back into the air which can relieve symptoms of:

- Congestion, cough and colds
- Dry, itchy eyes or skin
- Chapped lips • Restless sleep

Features

- Beautiful 7 colorful LED night light effect in two modes, separately controlled by a smart touch key.
- LED light color can automatically change and be selected and fixed as per desire.
- Advanced humidity technology for better humidity
- Adjustable mist volume as per your desire
- Top Handle design easier to carry the water tank
- Auto Switch-off when water runs out
- 20% energy saved with ERP technology
- Aroma Case for adding essence oil for aroma therapy


Specifications

- 3.5L, 250ml/h
- Power Consumption: 25 W
- Dimension: 229(L) * 220(W) * 252(H) mm
- Rated Voltage: AC 220-240V, 60Hz



Key Features

Ultrasonic Humidifier

 <p>Aroma Infused Mist Essential Oils Can be Used to infuse your mist.</p>	 <p>Whisper Quiet Operation on super low sound.</p>	 <p>Auto Shut-Off Automatically Shut soff when the water tank is empty</p>
 <p>Adjustable Mist Settings Rotary Knob Control From Min-Max</p>	 <p>7 Color LED Lighth Serves as a night lamp with mood lighths</p>	 <p>360° Rotation The Mist Nozzle Can be rotated 360°</p>



READ AND SAVE THESE INSTRUCTIONS

Failure to comply with the warnings listed below may result in electric shock or serious injury.



This product should be used only in accordance with the specifications outlined in this manual. Usage other than what has been specified here may result in serious injury.

- Disassembly repair or remodeling by an unauthorized person may result in serious harm and will void the manufacturer's warranty.
- Always place this humidifier on a firm, flat & level surface. This humidifier may not work properly on an uneven surface.
- Do not place this product on cloth, carpet or an absorbent surface. This may block air inlet.
- This product releases mist. Do not place this humidifier directly on wood furniture, flooring or any surface that could be damaged by water. Manufacturer does not accept any liability for damage in the case of the unit being placed incorrectly.
- Do not use if the plug is damaged or loose.
- Before filling or cleaning the unit, make sure it is unplugged.
- Once the humidifier has been plugged in, do not tilt or move the unit.
- Do not remove the water tank from the unit while it is on.
- Do not handle the plug with wet hands.
- Do not excessively bend, twist, pull or damage the power cord.
- Avoid placing this product where the humidity spout is pointed directly at an object or person.
- Do not inhale the mist/vapor expelled from the product or drink water from the tank.
- Do not fill the water tank with hot or boiling water.
- Do not use this product in direct sunlight or near a heat source such as a stove, heater or radiator.



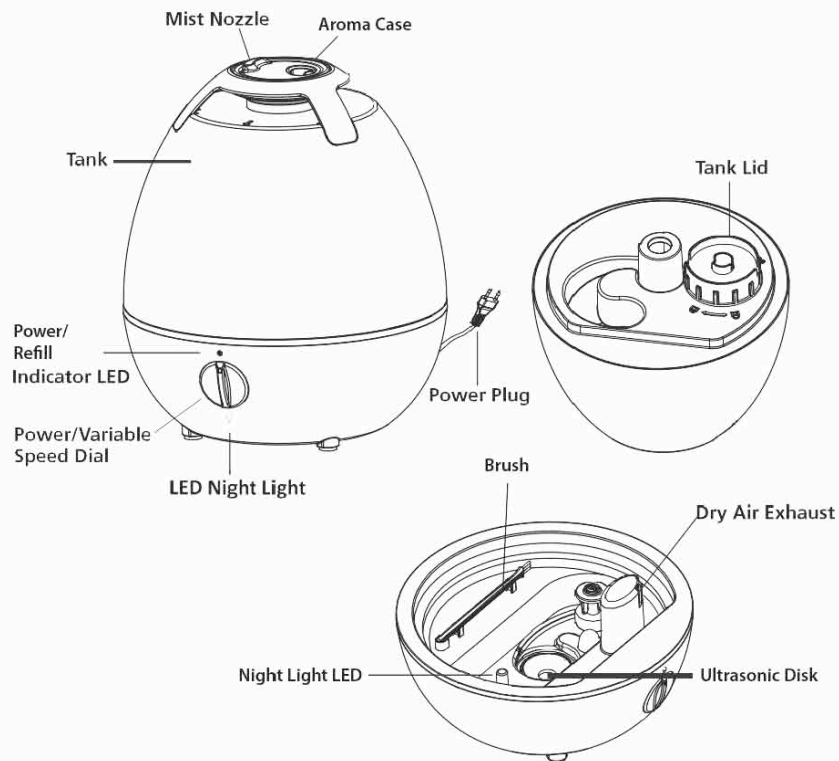
- If the water tank becomes cracked or damaged, do not use.
- Do not keep this product running for an extended period of time.
- Unplug the cord when unit is not in use for an extended period of time and/or when no one is home.
- Do not keep water in the tank when not in use for an extended period of time.
- Do not clean the unit, water tank or water reservoir with detergents or chemicals of any kind.
- The use of water additives including ethereal/essential oils, fragrances, eucalyptus, water conditioners, etc. will damage the appliance materials and as a consequence the whole unit. Any use of such additives will void the manufacturer's warranty.
- Do not use this product near any other electronic device.
- Do not cover the spray spout at any time during use. Do not put anything on or in the tank.
- **IMPORTANT:** Neither humans nor animals can hear the high frequency vibrations.
- When unplugging from outlet, hold humidifier securely.
- Do not place cord over objects.
- Do not get water in or on the power cord or where it connects to the product. Do not use near a sink.
- Do not touch the water tank during operation.
- Do not submerge the unit in water or pour water on the unit or in the humidity spout.
- When emptying water from water tank, pour on drain side.
- Do not cover the spout with cloth or hand and do not use without the spout.
- Use clean or distilled water in tank. Hard water areas will require more frequent cleaning.



PRODUCT SPECIFICATIONS AND PARTS

SPECIFICATIONS

MODEL NUMBER:	CF-2530
HUMIDIFYING MODE:	Ultrasonic Cool Mist
POWER SUPPLY:	100-240V, 50/60Hz
POWER CONSUMPTION:	25W
TANK CAPACITY:	3.5L
MOISTURE OUTPUT:	250ml/h
DIMENSIONS:	229(L)*220(W) *252 (H) mm





DIRECTIONS FOR USE

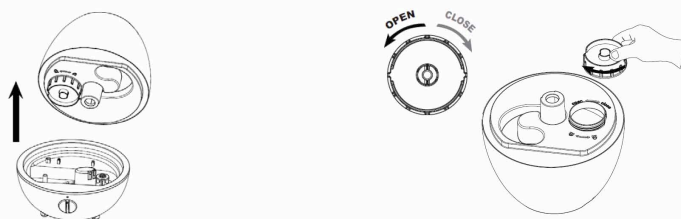
SET UP

Select a firm, level, flat location - at least six inches (15 cm) from any wall or object for proper air flow. Place the humidifier on a water-resistant surface, as water can damage furniture and some flooring. Do not place unit directly on carpet, towels, blankets or other absorbent surfaces.

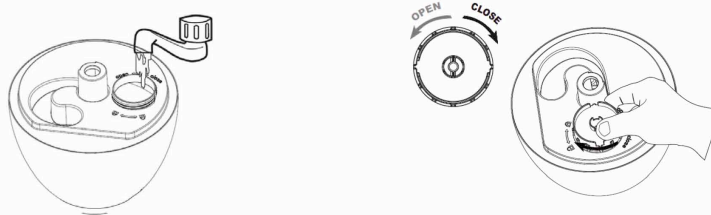
We will not accept responsibility for damage caused by water spillage.

FILLING

Make sure unit is unplugged.



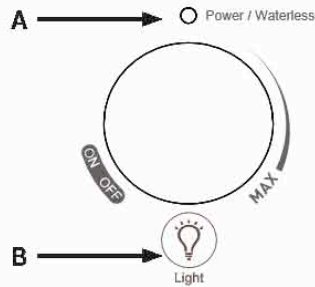
1. Separate the tank from the base of the unit.
2. Flip over water tank and open the tank lid, turning it to the left.



3. Pour cool, clean water directly into the tank. Do not pour anything but water into the tank.
4. Close the tank lid, turning it to the right. It is important to FIRMLY secure cap after filling the tank with water.
5. Attach tank to base of unit.
6. Before turning on, make sure there is water in the unit.



FUNCTIONS AND FEATURES



A. Power on/off and Mist Control

The spray volume or amount of mist that is produced by the unit can be adjusted based on need by rotating dial.

B. LED Night Light

1st press. Night light ON and cycle through the colors changing automatically with 5 second interval between two colors.

2nd press. Night light is fixed ON.

3rd press. Night light OFF.

Water Shortage

When the unit is low on water, the Refill indicator LED on the body will change from blue to red, and the unit will shut off. Simply add more water to continue use.

Mist Nozzle

The mist outlet can be selected through 360 degree by turning the spout.

Aroma Case

PLEASE DO NOT drop aroma oil directly into water tank or water base of the humidifier. This may cause corrosion to the product components which can result in danger. The aroma case is for adding essential oil for aroma therapy.



CLEANING

CLEANING

- Always unplug the unit before servicing in any way.

GENERAL CLEANING

- Inside the base of the unit. Pour excess water out of the unit. Wash out the unit with fresh water using the cleaning brush and a soft cloth as needed. Do not submerge the base of the unit into water, or allow water to enter inside the dry air exhaust port of the unit.
- Water tank. Empty water tank. Remove mist nozzle and clean the mist tube with fresh water and a light brush (bottle cleaning brush is recommended).
- Outer surface of the unit. Wipe the surface of the unit with a soft, damp cloth if needed. If you notice an accumulation of water during usage, reduce humidity and dry outer surface with a cloth.

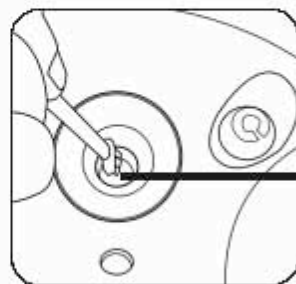
DESCALING

- Depending on usage and water type, cleaning to remove scale may be required weekly or every other week to optimize unit performance.
- If you live in a hardwater area, we recommend the use of distilled water for your humidifier. This will help reduce the precipitation of minerals or 'white dust'.
- Do not clean the unit or water tank with detergents or cleaning chemicals of any kind.

ULTRASONIC DISK

1. Unplug unit.
2. Remove the tank and empty all water from unit base and tank.
3. Locate the ultrasonic disk on the inside center of the base unit.
4. Use **ONLY** the enclosed cleaning brush to gently clean disk and remove build up and deposits.

Do not scrub or scrape the ultrasonic disk.



** Clean the disk with the brush only.
No other cleaning tool should be used. **BRUSH ONLY.***



CLEANING

If scale becomes difficult to remove with brush:

1. Fill the Base with: mixture of 1 tsp. white vinegar and 1 tsp. water.
2. Let solution stand for 5 minutes.
3. With the vinegar in the Base, clean all interior surfaces with a soft cloth or brush to help remove scale.
4. Also check mist nozzle and mist tube in water tank. Clean as needed.
5. Rinse the Base thoroughly with water to remove scale and vinegar solution.

Are minerals in your water producing white dust?
Try our Decalcification Cartridge

END OF SEASON STORAGE

- Follow the Cleaning and Descaling instructions when the humidifier will be stored at the end of the season.
- Dry the humidifier completely before storing. DO NOT store with water inside the Base or Water Tank.
- Pack the unit in its original carton and store in a cool, dry location.

NOTE: IF YOU EXPERIENCE A PROBLEM, DO NOT ATTEMPT TO OPEN THE MOTOR HOUSING YOURSELF. DOING SO MAY VOID YOUR WARRANTY AND CAUSE DAMAGE TO THE HUMIDIFIER OR PERSONAL INJURY.



TROUBLESHOOTING GUIDE

PROBLEM	SOLUTION
Water vapor and humidity are not produced.	Power plug: Unplug and then try again. Power Failure: When the power is returned, try again. Tank Installation: Make sure the tank is correctly attached. The surface of the ultrasonic disk is dirty: Clean ultrasonic disk.
Air blows but water vapor is not produced.	Excessive Water: Remove a certain amount of water from the tank. Detergent residue and/or oil ingredients from cosmetics, etc may be in tank; wash out tank and try again. The surface of the ultrasonic disk is dirty: Clean ultrasonic disk. If you use hard water, replace with softer water.
Humidity level is low.	The surface of the ultrasonic disk is dirty: Clean ultrasonic disk. The water in the unit is too cold: Replace with cool, but not cold water.
The humidity has a bad smell.	Poor maintenance or dirty water. Clean the product thoroughly, and fill it with fresh water.
White dust is forming on nearby furniture.	Hard water may deposit a certain amount of dust. Dust in the air also settles because of added humidity in the room. Use distilled water if this becomes a nuisance. Or use our Decalcification Filter.
Unit has stopped working.	No or low water. Unplug unit and refill tank.
Water is accumulating outside of unit or area surrounding unit.	Saturation of humidity. Lower mist control setting. Unit not level and water is accumulating. Unplug and place on level surface. Point spray away from objects. Raise unit on a water-resistant level surface 2-3 feet off of floor.
Water dripping when refilling.	Water remaining on bottom of tank. Wipe tank or tilt to drain before transporting.
Increased noise level.	Unit must be placed on a flat, level, hard surface. Make sure it is NOT placed on a soft or absorbent surface.
Red light on power dial.	Indicates low water. Unplug and refill tank.









www.tylrhome.com

