



INSTRUCTIONS MANUAL

TYL-WT5G

SHAVED ICE MAKER

Make healthy, homemade slushies, snow cones, frozen cocktails and more



www.tylrhome.com

Table of Contents

IMPORTANT SAFETY INSTRUCTIONS.....	2
PARTS AND FEATURES.....	4
BEFORE FIRST USE	6
ASSEMBLING YOUR SHAVED ICE MAKER.....	6
HOW TO MAKE ICE	6
USING YOUR SHAVED ICE MAKER.....	6
DISASSEMBLING YOUR SHAVED ICE MAKER.....	8
CLEANING AND MAINTENANCE.....	9
STORAGE	9

IMPORTANT SAFETY INSTRUCTIONS

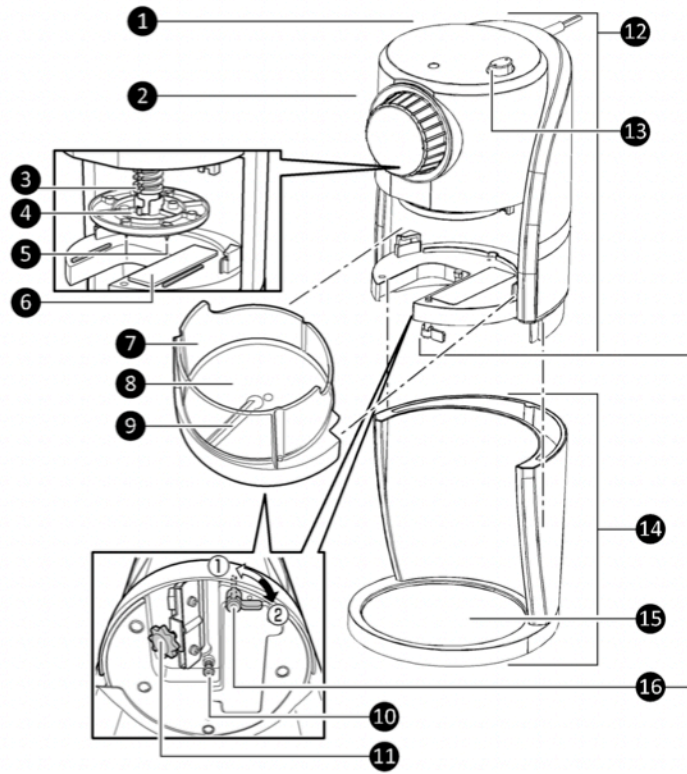
When using any electrical appliance, basic safety precautions should always be followed including the following:

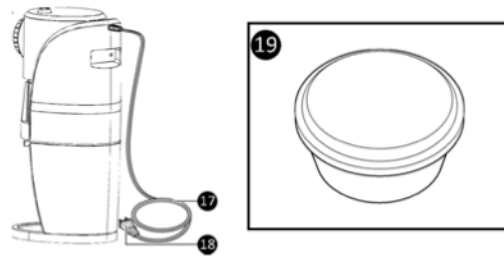
1. Read all instructions.
2. Remove all bags and packaging from appliance before use.
3. Never leave appliance unattended when in use.
4. Make sure the appliance is cleaned thoroughly before using.
5. Do not use appliance for other than its intended use.
6. For household use only. Do not use outdoors.
7. Close supervision is necessary when any appliance is used by or near children.
8. To prevent electric shock, do not submerge the cord, plugs, motor unit, or any electrical parts in water or other liquids.
9. Do not operate the machine without ice. Do not use the appliance to shave or crush substances other than ice.
10. Do not place your fingers in the appliance, as the blades are sharp and may cause injury.
11. Do not attempt to sharpen the blades.
12. In order to prevent the unit from overheating, do not operate this appliance for more than 2 minutes continuously. Allow the appliance to rest in between uses.
13. Do not operate this appliance with a damaged cord, damaged plug, after the appliance malfunctions, is dropped, or damaged in any manner. Return appliance to the nearest authorized service facility for examination, repair, or adjustment.
14. Do not place appliance on or near a hot gas burner, hot electric burner, or in a heated oven.

15. Refrain from using attachments that are not recommended by the appliance manufacturer, as this may result in fire, electric shock, or personal injury.
16. Do not let the cord touch hot surfaces, or hang over the edges of tables or counters.
17. This appliance is not intended for use by persons (including children) with reduced physical, sensory, or mental capabilities, or lack of experience and knowledge unless they are provided with supervision and instruction concerning use of the appliance by a person responsible for their safety.
18. Always be sure to unplug the appliance from the outlet prior to moving, cleaning, storage, and when not in use.
19. Improper use of the appliance can result in property damage or even in personal injury.

SAVE THESE INSTRUCTIONS

PARTS AND FEATURES





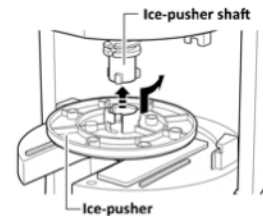
- | | |
|---------------------------|------------------------------------|
| 1 – Shaved ice maker unit | 11 – Blade adjustment screw |
| 2 – Ice pusher knob | 12 – Motor unit |
| 3 – Ice pusher shaft | 13 – Power button |
| 4 – Ice pusher plate | 14 – Base |
| 5 – Spikes | 15 – Base plate |
| 6 – Heater plate | 16 – Locking switch |
| 7 – Ice chamber | 17 – Power cord |
| 8 – Aluminum base | 18 – Plug |
| 9 – Shaving blade | 19 – Ice-making container with lid |
| 10 – Shaft | |

BEFORE FIRST USE

Remove all packaging and clean your Shaved Ice Maker and all of its components according to the section on **Cleaning and Maintenance**.

ASSEMBLING YOUR SHAVED ICE MAKER

1. Place the base on a stable and dry surface.
2. Install the motor unit on the base.
3. Fix the ice pusher plate to the ice pusher shaft by pushing the ice pusher plate up and turning counter-clockwise.



HOW TO MAKE ICE

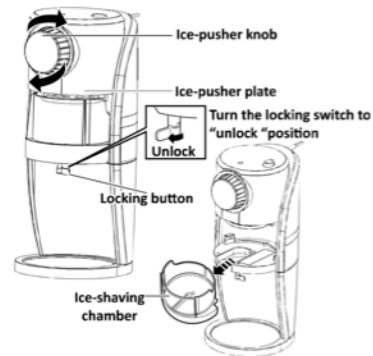
1. Clean the ice-making container thoroughly.
2. Fill the ice-making container with water up to 80% full. Cover container with the lid and place in the freezer.

USING YOUR SHAVED ICE MAKER

1. Take the ice-making container from the refrigerator and remove the lid. If the ice has been in the freezer for a long time, it may be too hard and may need to rest at room temperature for a few

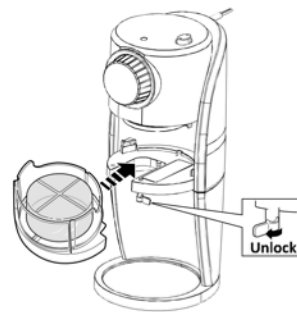
minutes before shaving. The shaved ice maker will then produce a fluffier snow.

2. Pull out the ice chamber from the motor unit. Turn the ice pusher knob clockwise until the ice pusher plate rises to the top. Turn the locking switch to "Unlock" position and take the ice chamber out.



3. Place the ice (from the ice-making container) in the ice chamber. Alternatively, place ice cubes inside the ice. The bowl should be filled to the top level.

4. Slide the ice chamber back into the motor unit, making sure the notches on the side of the ice chamber align with the grooves on the motor unit. Turn the locking switch to "Locked" position.



5. Place an empty bowl on the base plate of the unit. This bowl will be used to collect the shaved ice.
6. Plug the into an electrical outlet.
7. Adjust the blade height adjustment screw to choose between 'Coarse' and 'Fine' shaving texture.

8. Press the Power button to start shaving ice. The ice pusher plate automatically descends while the Power button is pressed.



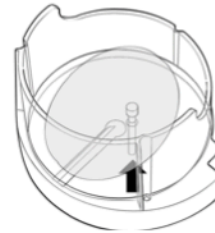
To stop the shaving process, simply stop pressing the Power button.

Note:

- Do not operate the unit continuously for more than 10 minutes.
- Refrain from shaving ice containing alcohol.

9. After finished shaving ice, turn locking switch to “Unlock” position and remove the ice chamber. Dispose of remaining ice.

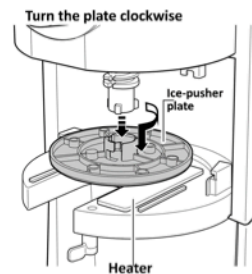
Note: When ice sticks to the chamber, push the shaft to remove the remaining ice.



10. Unplug the unit.

DISASSEMBLING YOUR SHAVED ICE MAKER

1. Remove the motor unit from the base.
2. Turn the ice pusher knob clockwise until the ice pusher plate rises to the top. Turn the locking switch to “Unlock” position and slide the ice chamber out.
3. Remove the ice-pusher plate from the ice pusher shaft by turning it clockwise and pulling it down.



Caution! Be careful of the spikes on the ice-pusher plate.

CLEANING AND MAINTENANCE

- Disassemble the appliance before cleaning.
- When cleaning, exercise caution and avoid touching the shaving blade to prevent injury.
- DO NOT submerge the motor unit in water or other liquid. Wipe with a damp cloth before drying thoroughly.
- Avoid using abrasive cleaning agents when cleaning the appliance.
- All other parts may be washed in warm water with mild soap and rinsed. All parts of the Shaved Ice Maker are NOT dishwasher safe.
- Dry all parts thoroughly before storing.

STORAGE

- Apply some cooking oil on the shaving blade.
- Store the unit by tucking the motor unit into the base, facing the base.

