



INSTRUCTIONS MANUAL

TYL-BC8838

2in1 CORDLESS STICK

Vacuum Cleaner

Powerful, versatile cleaning at your fingertips



www.tylrhome.com

Table of Contents

- IMPORTANT SAFETY INSTRUCTIONS2**
- PARTS AND FEATURES5**
- ASSEMBLING YOUR VACUUM CLEANER6**
- OPERATING YOUR VACUUM CLEANER7**
 - Using your Vacuum Cleaner as a Handheld7
 - Using your Vacuum Cleaner to Clean High & Hard-to-Reach Places
- CHARGING THE BATTERY8**
 - Battery Removal and Disposal9
- CLEANING AND MAINTENANCE10**
 - Emptying the Dust Bin.....10
 - Cleaning the Dust Bin, Filter Assembly and HEPA Filter10
 - Removing and Replacing the Brushroll11
- STORAGE11**
 - Mounting the Wall Bracket.....12

IMPORTANT SAFETY INSTRUCTIONS

When using your appliance, basic precautions should always be followed, including the following:

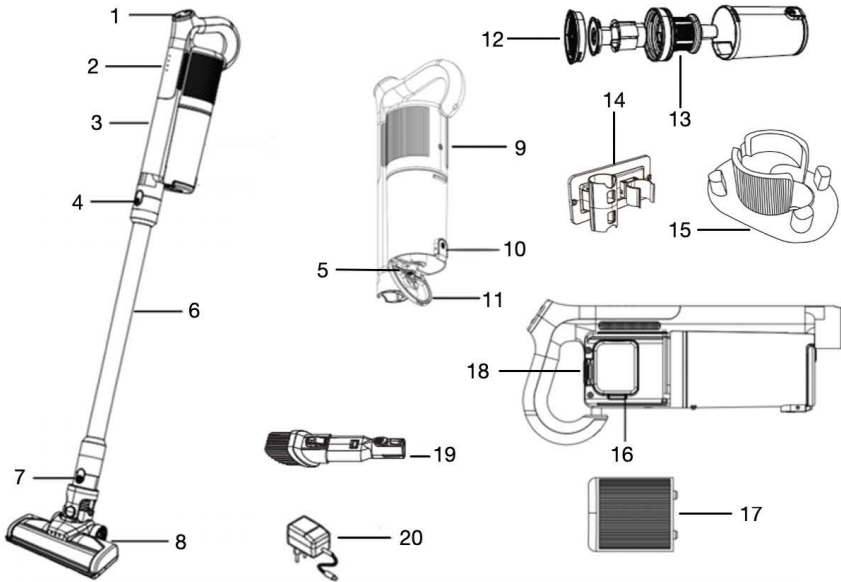
1. This appliance has been designed for domestic dry vacuum cleaning only. DO NOT use in the following areas:
 - Poorly lit areas
 - Wet or damp surfaces
 - Outdoor areas
 - Spaces that are enclosed and may contain explosive or toxic fumes or vapors (lighter fluid, gasoline, kerosene, paint, paint thinners, mothproofing substances, or flammable dust)
2. Never immerse the charger or unit in water to avoid danger.
3. Keep the appliance and accessories away from hot surfaces like hot gas or microwave oven.
4. DO NOT use with any opening blocked; keep free of dust, lint, hair, and anything that may reduce airflow.
5. DO NOT put any objects into nozzle or accessory openings.
6. Keep nozzle and all vacuum openings away from hair, face, fingers, uncovered feet, or loose clothing.
7. DO NOT use if vacuum is not working as it should, or has been dropped, damaged, left outdoors, or dropped into water.
8. DO NOT use to pick up:
 - Liquids
 - Large objects
 - Hard or sharp objects (glass, nails, screws, or coins)

- Large quantities of dust (including drywall, fireplace ash, or embers).
 - Smoking or burning objects (hot coals, cigarette butts, or matches)
9. DO NOT use without dust cup, filters, and brush rolls in place.
 10. The charger has been designed for a special voltage. Always check that the mains voltage is the same as that stated on the rating plate.
 11. DO NOT handle plug or vacuum with wet hands.
 12. Always turn off the vacuum before cleaning, or before connecting or disconnecting any parts or accessories.
 13. Only use batteries and chargers supplied by the manufacturer.
 14. Turn off the vacuum before inserting or removing the battery, as well as before plugging in or unplugging the charger.
 15. Repairs should be carried out by a service agent in accordance with relevant safety regulations if the battery cannot be charged normally.
 16. Care should be taken on dispose of the battery pack safely in accordance with local regulations; Never dispose in fire or water as this may increase the risk of explosion or contamination.
 17. DO NOT modify or attempt to repair the vacuum or the battery yourself, except as indicated in this manual. DO NOT use the battery or vacuum if it has been modified or damaged.
 18. This vacuum is not intended for use by anyone with reduced physical, sensory or mental capabilities, or lack of experience and knowledge, unless they have been given supervision or instruction concerning use of the appliance by a person responsible for their

safety. Children should be supervised to ensure that they do not play with the vacuum.

SAVE THESE INSTRUCTIONS.

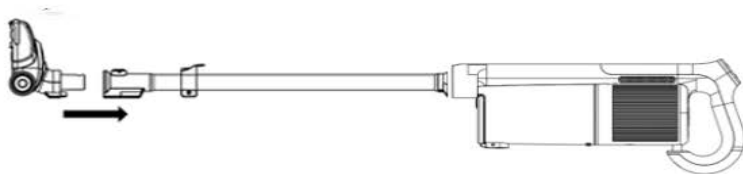
PARTS AND FEATURES



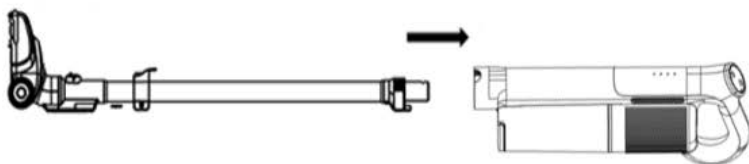
- | | |
|--|-------------------------------------|
| 1 Control Panel | 11 Dust Bin Cover |
| 2 LED Battery Level Indicators | 12 HEPA Filter |
| 3 Handheld Vacuum | 13 Filter Assembly |
| 4 Extension Tube Release Button | 14 Wall Bracket |
| 5 Dust Bin Release Button | 15 Handheld Vacuum Dock |
| 6 Extension Tube | 16 Rechargeable Battery |
| 7 Motorized Floor Brush Release Button | 17 Battery Cover |
| 8 Motorized Floor Brush | 18 Battery Cover Release Button |
| 9 Charging Port | 19 Combination Brush & Crevice Tool |
| 10 Dust Bin Cover Release Button | 20 Power Adapter |

ASSEMBLING YOUR VACUUM CLEANER

1. Insert Extension Tube into Motorized Floor Brush connector until it clicks into place. To detach the Floor Brush, press the Floor Brush release button.



2. Push Handheld Unit into the Extension Tube until it clicks into place. To detach the Handheld Unit, press the Extension Tube Release Button.



Note: This vacuum cleaner can be free-standing. However, In between uses, it is recommended to store the vacuum cleaner using the wall bracket. When carrying out any maintenance, always lie flat on the floor in a suitable location so it does not become a trip hazard or cannot be stepped on.

OPERATING YOUR VACUUM CLEANER

1. Before first use, make sure the vacuum cleaner has been charged for at least 4 hours.
2. Press the Power button to turn the vacuum ON or OFF.
3. Press the +/- button to switch between HIGH or LOW speed. The default speed setting is HIGH.
4. When in use, the LED battery level indicators will display the battery level.

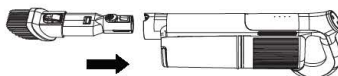
WARNING! Do not use the Cordless Vacuum Cleaner without the removable filter assembly or dust bin in place.

Risk of personal injury – the brushroll may suddenly restart. Turn off the unit before cleaning or servicing the brushroll.

Using your Vacuum Cleaner as a Handheld

1. Press the Extension Tube Release Button. Pull to separate the Handheld Unit from the Extension Tube.
2. Choose an accessory.
3. Push the chosen accessory into the Handheld Vacuum until it clicks into place.

Note: *All available accessories can be attached directly onto the Handheld Vacuum.*



Using your Vacuum Cleaner to Clean High & Hard-to-Reach Places

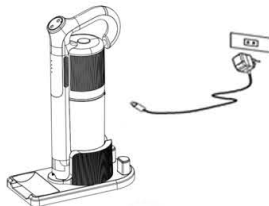
1. Press the Motorized Floor Brush Release Button and pull to remove from the Extension Tube.
2. Choose an accessory.
3. Push the chosen accessory into the Extension Tube until it clicks into place.



CHARGING THE BATTERY

1. Turn off the Cordless Vacuum Cleaner. You may use the Handheld Vacuum with the Handheld Vacuum Dock supplied.
2. Connect the adapter to the charging port on the Handheld Unit.
3. Plug the adapter into the power outlet.
4. The LED battery indicators will flash one at a time. Once the battery is fully charged, all the LED indicators will be lit.

WARNING! Do not use any power adaptor other than that supplied. Using an alternative will increase risk of injury and/or damage to the appliance.

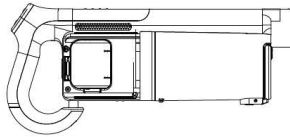


Note: The battery, like all lithium-ion batteries, will naturally decrease in capacity over time from the 100% capacity of a new battery. The battery has 6-months warranty only.

Battery Removal and Disposal

When the battery needs to be replaced, dispose of it or recycle it in accordance with local ordinances or regulations.

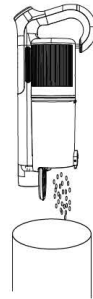
1. Press the battery cover release button.
2. Lift battery to remove from housing.



CLEANING AND MAINTENANCE

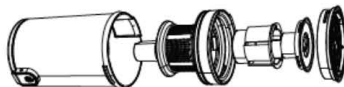
Emptying the Dust Bin

1. Turn off the Vacuum Cleaner.
2. Press the Handheld Unit Release Button. Pull to separate the Handheld Unit from the Extension Tube.
3. Hold the Handheld Unit over a trash bin, then press the Dust Bin Cover Release Button to discard contents.



Cleaning the Dust Bin, Filter Assembly and HEPA Filter

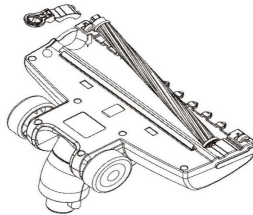
1. Remove the Extension Tube. Press the Dust Bin Release Button and pull the Dust Bin away.
2. Pull the HEPA filter and Filter Assembly out of the Dust Bin. If necessary, wash the Dust Cup under a tap, then wipe dry completely.
3. Disassemble the Filter Assembly. Tap both HEPA filter and Filter Assembly parts and over a trash bin to remove dirt. Rinse both HEPA Filter and Filter Assembly parts with tap water. Allow to dry for 24 hours or until completely dry before reinstalling.



4. Reassemble Filter Assembly parts, then slide back together with the HEPA filter into the Bin. Place Dust Bin back into the Handheld Unit until it clicks into place.

Removing and Replacing the Brushroll

1. Remove Motorized Floor Brush from Extension Tube.
2. Switch the Brushroll Release Tab to Unlock position, then lift side guard to access the brushroll.



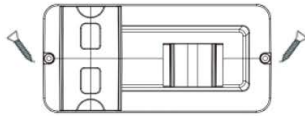
3. Pull out the brushroll from the side of the housing. Carefully remove any string, carpet fibers or hair from the brushroll, then re-fit brushroll into the housing.
4. Replace side guard until it clicks into place.

STORAGE

The vacuum cleaner comes with a wall-mounting bracket for upright storage and a dock to store the Handheld Vacuum and accessory tools, in between uses.

Mounting the Wall Bracket

1. Choose a suitable spot on a sturdy wall. The assembled Vacuum Cleaner should be positioned so that you can conveniently store it in the upright position. Make sure that the unit reaches the floor during storage.
2. Screw the bracket on the wall using the supplied screws.



3. Place the Vacuum Cleaner handle on the bracket holder, and store the accessory tool(s) as shown below.

