



INSTRUCTIONS MANUAL

TYL-QZ66XDV

2in1 STEAM & PRESS GARMENT STEAMER

The easiest, most flexible way to creaseless clothes



www.tylrhome.com

Table of Contents

IMPORTANT SAFETY INSTRUCTIONS	2
PARTS AND FEATURES	5
ASSEMBLING YOUR GARMENT STEAMER.....	6
Installing the Telescopic Support Poles	6
Installing the Integrated Hanger.....	7
Installing the Soleplate Holder.....	7
Installing the Ironing Board.....	8
Horizontal Position.....	9
Vertical Position.....	10
Filling the Water Tank.....	11
OPERATING YOUR GARMENT STEAMER.....	12
Using the Garment Steamer.....	12
Horizontal Ironing.....	13
Vertical Ironing	14
After Use	14
CLEANING AND MAINTENANCE.....	16
Cleaning the Water Tank	16
Cleaning the Main Body	16
TROUBLESHOOTING	18
WARRANTY TERMS AND CONDITIONS.....	19

IMPORTANT SAFETY INSTRUCTIONS

When using electrical appliances, basic safety precautions should be followed, including the following:

- Make sure the voltage of your power source correspond to the voltage indicated on the appliance rating label, and that the outlet socket is properly earthed.
- To reduce the likelihood of circuit overload, do not operate another high wattage appliance on the same circuit.
- Never immerse the cord, plug or appliance in water or any other liquid. Never expose the electrical connections to water or any other liquid. Should liquid enter the main body, unplug the appliance from the power socket immediately and contact an authorized service center.
- Do not use the appliance outdoors or expose it to humidity. Never use the appliance adjacent to water contained in a bath, shower, wash basin or other vessel. The proximity of moisture presents a danger, even when the appliance is switched off.
- Do not operate the appliance or touch the power cord or plug with wet hands.
- Always unwind the power cord fully before switching on and do not use an extension cord. If an extension cord is absolutely necessary, a 15A rated cord should be used. Cords rated for less amperage may overheat. Take care when arranging the cord so that it cannot be pulled or tripped over.
- Keep the cord away from heated surfaces. Do not allow cord to touch heated surfaces. Do not pull or twist cord.

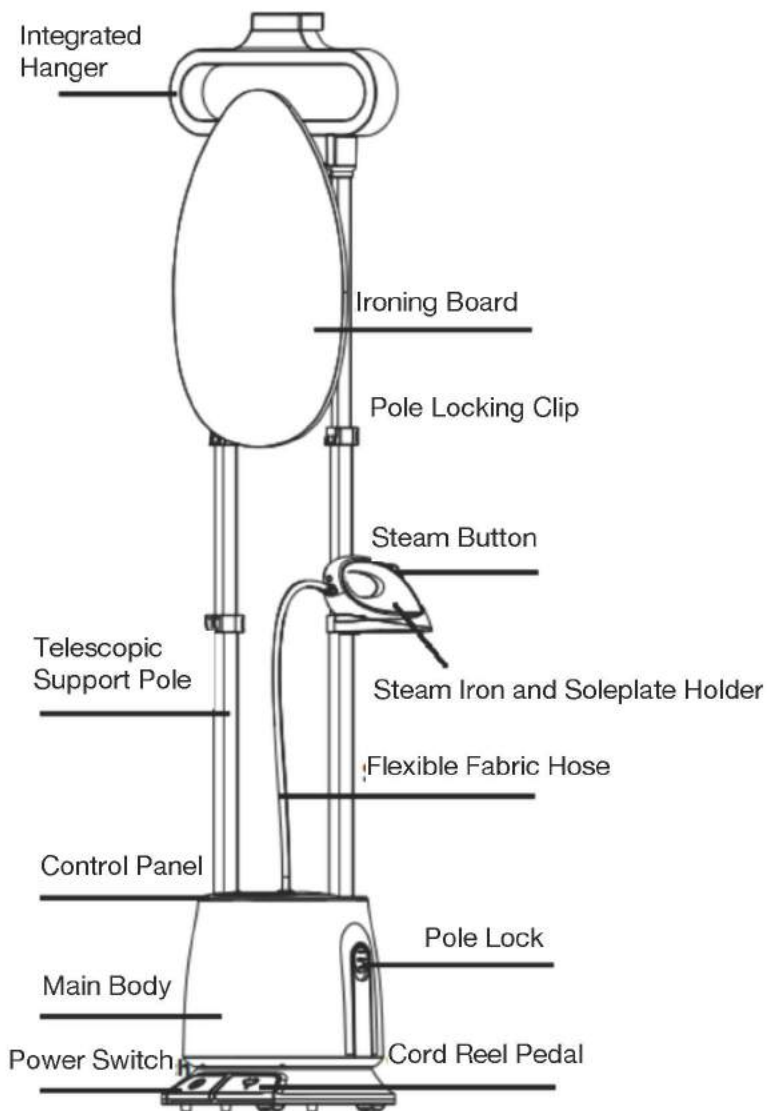
- Never operate this appliance if it has damaged cord or plug, if it is not working properly, or if it has been dropped or damaged or dropped into water. Do not attempt to repair the appliance. Incorrect reassembly or repair could cause a risk of fire, electric shock, or injury to persons when the appliance is used. Bring the appliance to an auth. vice center appliance to an authorized service center for examination and repair.
- Disconnect the appliance after every usage, before cleaning and before filling or emptying the water tank. To disconnect, turn the appliance off and remove the plug from the power socket. Pull only on the plug itself, not on the cable.
- This appliance is intended exclusively for the smoothing and removal of creases and wrinkles on garments and other home textiles. Do not use it for anything other than its intended purpose and only use it as described in this manual. All other use is deemed improper use.
- Ensure that all parts are correctly assembled before use. Do not use any accessories with this appliance that are not supplied or specifically recommended. Improper use of accessories may result in the risk of fire, electric shock and/or injury to persons.
- This appliance is not intended for use by persons (including children) with reduced physical, sensory or mental capabilities, or lack of experience and knowledge, unless they have been given supervision or instructions concerning use of the appliance by a person responsible for their safety.
- This appliance is not a toy. Close supervision is necessary when any appliance is used by or near children.
- This appliance should never be left unattended when

plugged in.

- Only fill purified water into the tank; do not add scented substances, vinegar, descaling agents or any other additives into the water tank when using the appliance, as they can cause damage to the appliance. Do not add hot water to the tank.
- The appliance must be disconnected from the power supply before emptying or refilling the water tank.
- Surfaces of this appliance may be hot when in use. Do not let heated surfaces touch eyes or skin.
- Do not place the steam iron directly on any surface. Use the soleplate holder provided.
- While emitting steam, this appliance may cause burns if it is used too close to the skin, scalp, or eyes or if it is used incorrectly. To reduce the risk of contact with hot water discharging from steam vents, test appliance before each use by holding it away from your body.
- Do not operate steamer without properly filling the water tank.
- Always keep the hose and steam iron elevated above the water tank.
- Burns could occur from touching hot metal parts, hot water or steam. Use care when moving the appliance — there may be hot water in the tank.
- Never hold your hand over the steam head/iron.
- Never steam clothes that you or someone else is wearing.

SAVE THESE INSTRUCTIONS. FOR HOUSEHOLD USE ONLY. NOT FOR COMMERCIAL USE.

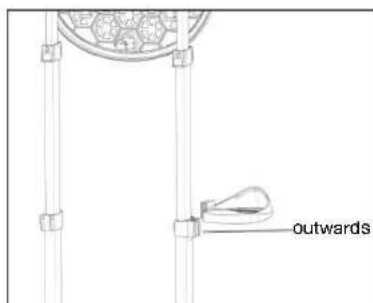
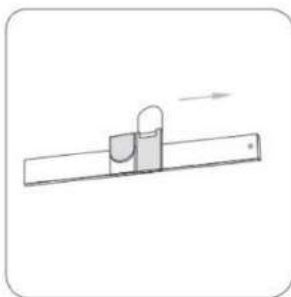
PARTS AND FEATURES



ASSEMBLING YOUR GARMENT STEAMER

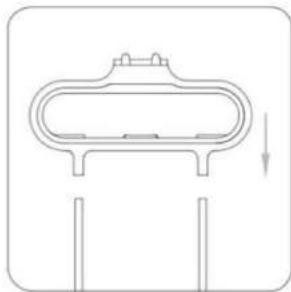
Installing the Telescopic Support Poles

1. Remove the appliance and parts from the packaging.
2. Insert both telescopic support poles into both sides of the main body, then push until it locks into place.
3. Adjust the support poles to desired height and use the pole locking clips to lock poles in place. Make sure the clip with the slot for the soleplate holder is facing outwards.



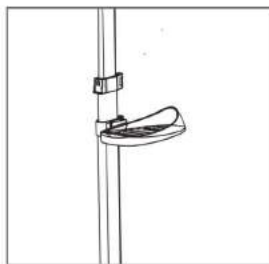
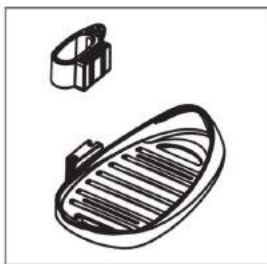
Installing the Integrated Hanger

With the hook on the hanger facing forward, attach the hanger to the support poles by inserting both ends of the hanger into the pole connections and push down until the hanger properly engages. Allow about 10cm length of the support poles to be inserted into the hanger.

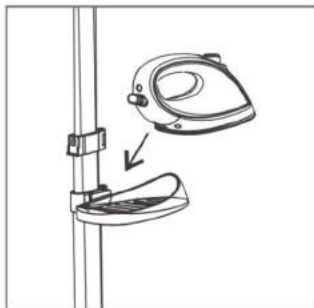


Installing the Soleplate Holder

1. Attach the soleplate on either side of the garment steamer by inserting the hook of the soleplate holder into the slot on the pole locking clip until it is securely in place.

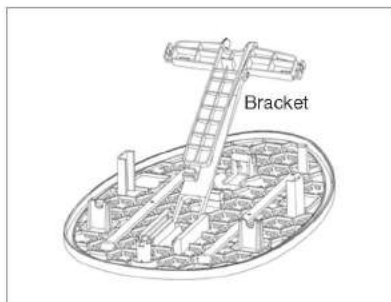
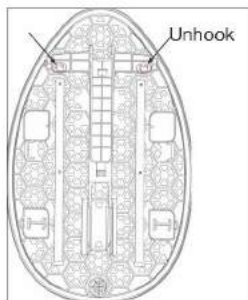


2. Place the steam iron on the soleplate holder.

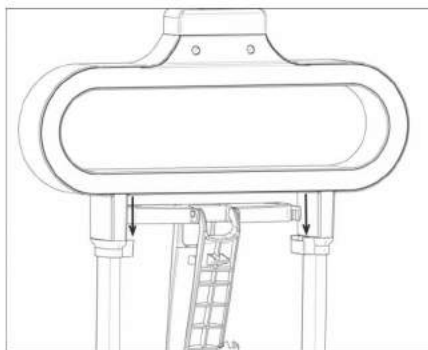
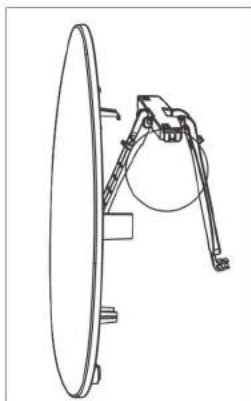


Installing the Ironing Board

1. Take out the ironing board. Release the bracket arm from the hooks at the back of the ironing board, as shown below.

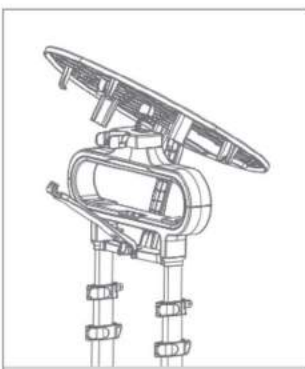
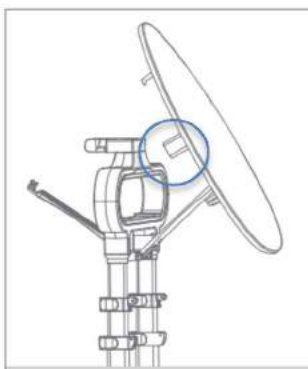


2. Insert the hooks on both edges of the bracket's rail into the slots found on the hanger, as shown below.

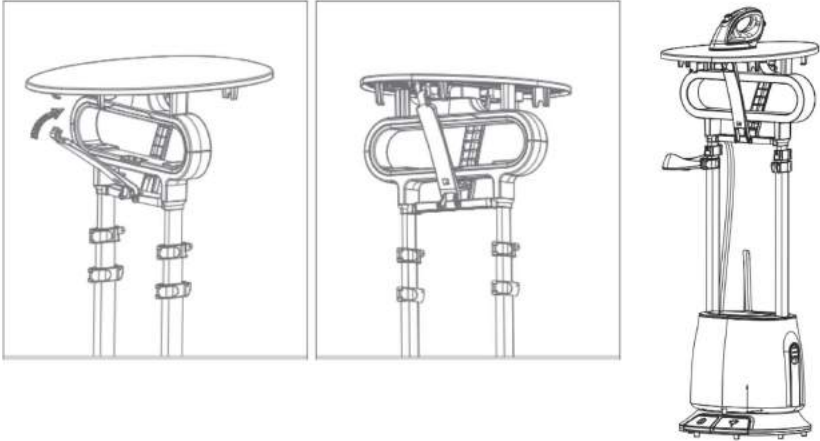


Horizontal Position

1. Raise the ironing board and insert the protrusion on the underside of the ironing board into the slot found on top of the hanger.

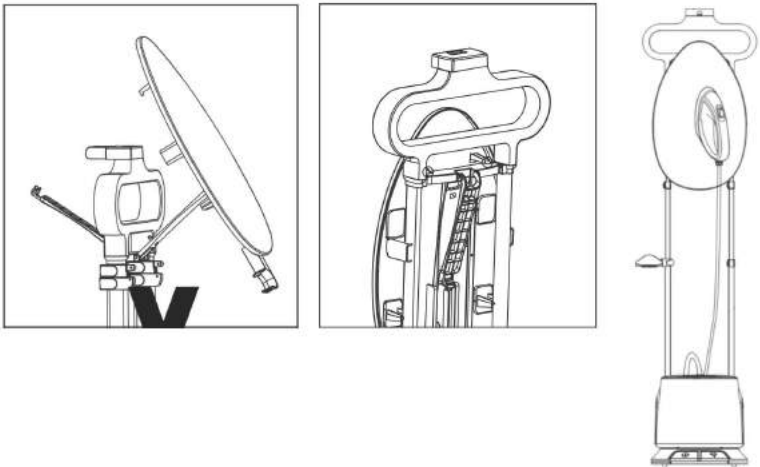


2. Clip the swiveling arm to the underside of the ironing board as shown below, making sure the ironing board sits flat.



Vertical Position

Insert the two hooks found at the back of the ironing board into the slots on the bracket's rail.

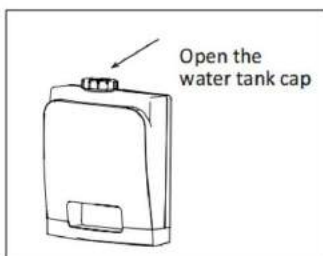


Filling the Water Tank

1. Remove the water tank from the main body by pulling the tank handle upwards.
2. Turn the water tank upside down. Unscrew the water tank cap and fill water tank with water. Do not fill below MIN level marked on the tank.

NOTE: Use distilled or purified water to minimize scale build up and prolong the life of the appliance.

3. Screw the water tank cap back on and place the water tank back into the main body. Make sure it is seated properly.



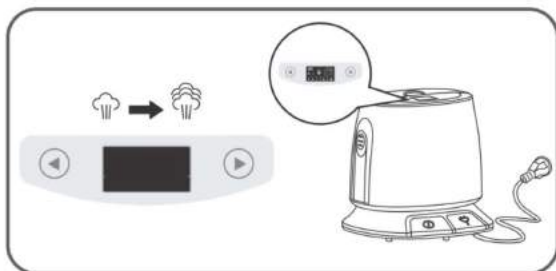
OPERATING YOUR GARMENT STEAMER

Using the Garment Steamer

1. Pull cord from the cord storage and plug in the appliance. A beep will be heard and the power icon appears on the control panel display.
2. Place garment to steamed on the integrated hanger, or on a separate hanger which may be suspended from the hanger hook on the integrated hanger. (See section on **Installing the Ironing Board: Vertical Position**).

Alternatively, assemble the ironing board to a horizontal position and place garment to be ironed on the board. (See section on **Installing the Ironing Board: Horizontal Position**).

3. Press the Power switch using the foot pedal control. The indicator light will light up in red, signifying the unit is heating. After about 60 seconds, the unit is ready to use for dry ironing. At this time, the indicator light will turn have turned to green.
4. To steam, select a setting from 1-5 on the control panel using the arrows on the control panel. Press the Steam button to activate the steam function (indicator light comes on). Press the Steam button again to deactivate the steam function (indicator light turns goes off). and switch to dry ironing.

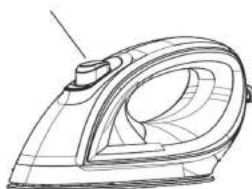


- Steam Setting**
- 1 – Silk
 - 2 – Cotton
 - 3 – Fur
 - 4 – Linen
 - 5 – Woolen

Press the Steam button to activate the steam. Wait for 45-50 seconds until the steam comes out.



Press the Steam button again to stop the steam. Wait for 8-10 seconds for the steam to completely stop coming out.



Horizontal Ironing

With the garment placed on the ironing board, begin dry ironing or steam ironing.

Vertical Ironing

Place garment over the integrated hanger, or on a separate hanger suspended from the hanger hook on the integrated hanger.

1. Select a setting from 1-5 on the control panel using the arrows.
2. Hold the steam iron by the handle with the soleplate facing away from you.
3. Press the Steam button and wait for steam to come out. Slowly guide the iron over the garment to remove creases and wrinkles. Start at the top of the body of the garment and gradually move downward. Hold the lower hem by hand to stretch the garment. Press the Steam button again to deactivate the steam function.

CAUTION! *Soleplate will be hot when in use. Avoid prolonged contact. Keep the steam iron moving while steaming your garment.*

After Use

1. Place the steam iron on the soleplate holder.
2. Switch the power off (light indicator on the control panel will go off) then unplug the unit.
3. Push the cord reel pedal to retract and store the power cord.
4. Empty and rinse the water tank each time before storage in order to flush out any scale particles. You may also use a dry cloth to wipe the excess water and residue in the space underneath the water tank.

5. To store, unlock the pole locking clips and slide the telescopic poles down.

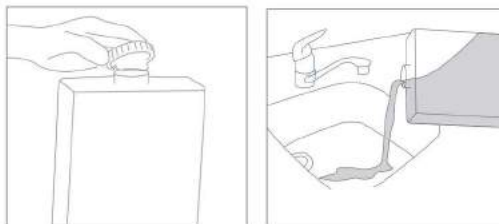
CAUTION! *Do not attempt to lift or transport the unit by holding the integrated hanger or the water tank handle. Always make sure the support poles are firmly fixed to the main body before lifting the appliance.*

CLEANING AND MAINTENANCE

IMPORTANT: *Before cleaning, switch off the appliance and wait for at least 30 minutes, or until the appliance cools down completely.*

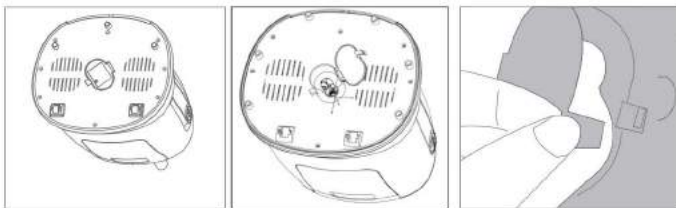
Cleaning the Water Tank

1. Remove the water tank from unit. Unscrew water tank cap and empty residual water. Rinse water tank with fresh water and let dry, then replace the water tank cap.

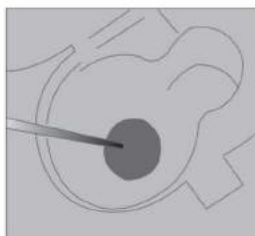


Cleaning the Main Body

1. Remove the water tank. Remove the filter under the water tank and rinse with tap water. Use a dry cloth to wipe the excess water and residue in the space under the water tank.
2. Disassemble the telescope poles and the ironing board. Turn the main body upside down.
3. Remove the cover on the bottom of the body with a screwdriver.



4. Use a flat head screwdriver to remove the drain cap. Rinse the drain cap to remove the scale build-up.
5. Use a wire brush to clean the scale build-up inside the drain hole. Turn the main body upside down and shake gently to dispose of the scale particles inside the drain hole.



NOTE:

- *Clean the water tank and filter about every 1 month of regular use, or every 5 gallons of water used.*
- *Clean the drain hole about every 30 times of use.*

TROUBLESHOOTING

Problem	Possible Cause	Recommended Action
The unit fails to heat. The indicator light does not turn on.	The unit is not plugged in.	Plug unit into electrical outlet.
Indicator light is on but unit fails to steam.	Water tank level is low, or water tank is empty.	Refill the water tank.
	Water tank is not properly installed.	Check that the water tank is in properly in place.
	Flexible fabric hose is bent.	Straighten the flexible fabric hose.
	Water does not flow into the boiler.	Shake, or replace the water tank.
Steam flow is low/intermittent.	Water tank level is low, or water tank is empty.	Refill the water tank.
	Water tank is not properly installed.	Check that the water tank is in properly in place.
	Water tank filter is blocked.	Wash the tank filter.
Water tank is leaking.	Water tank cap is not screwed on tightly.	Screw on the water tank cap tightly.
	Water tank is defective.	Contact customer service.

WARRANTY TERMS AND CONDITIONS

ONE-YEAR LIMITED WARRANTY ON PARTS AND LABOR

TYLR provides a warranty to the original purchaser of this product against defects in materials and workmanship for one year. If a product covered by this warranty is determined to be defective within the warranty period, **TYLR** will repair or replace the defective part with a new or remanufactured part free of charge subject to terms and conditions stated herein.

To obtain warranty service, proof of purchase in the form of a sales invoice or copy thereof is required to show that a product is within the warranty period. If any one of the documents cannot be produced, corresponding fees for labor and replacement parts will be charged.

Parts and Labor

There will be no charge for parts and labor during the warranty period. Replacement parts or units may be new or recertified and are upon **TYLR's** option and sole discretion. Replacement parts and units are warranted for the remaining portion of the original warranty. Our decision on all questions relating to complaints as a result of defects, either workmanship or materials, shall be conclusive and you shall agree to abide by such decision. Any unit or defective part that have been replaced shall become **TYLR's** property. After the lapse of this warranty, a charge will be made on all labor and replacement of parts.

Types of Services

Defective Products must be sent to any **TYLR** service center to obtain warranty service. **TYLR** is neither responsible for transportation costs to the service center nor **TYLR** will cover return shipping to the customer. Product returns to **TYLR** service centers must utilize either the original carton box and shipping material or packaging that affords an equal degree of protection.

For home service (where available), the transportation fee of **TYLR** service personnel will be charged to the customer, depending on the location. Our service personnel reserve all rights to refuse to attend to any equipment installed in an inaccessible location or any other hazardous situation.

LIMITATIONS AND EXCLUSIONS

TYLR one-year limited warranty only covers defects in materials and workmanship; however, this warranty does not cover the following:

1. Damage resulting from accidents, transport, misuse, abuse, alteration, tampering, or failure of the purchaser to follow normal operating procedures outlined in the user's manual.
2. Damage caused by negligence and poor maintenance.
3. Defects or damage due to spillage of food/liquids or improper usage of electrical supply or electrical circuit, major fluctuations in voltage, exposure to rain or moisture, wrong fuel or oil used.
4. Damage, losses, and defects as a result of fire, flood, or other Acts of God.
5. Normal wear-and-tear, corrosion, rusting, or stains.

6. Defects & damage arising from improper testing, operation, usage of the wrong component, demonstration, maintenance, installation, adjustment, or any alteration or modification of any kind.
7. Scratches & damage to the outer surface areas and externally exposed parts that are due to normal customer use.
8. General maintenance & routine servicing.
9. Claims for damaged/missing parts after 7 days from the date of purchase.
10. If any part or parts of the unit are replaced with a part or parts not supplied or approved by us, or if the unit has been dismantled or repaired by any person other than a **TYLR** authorized technician.
11. Any equipment/product which has its serial number removed or made illegible/tampered with.
12. If the warranty card is altered, defaced, or erased in any manner whatsoever.
13. If the unit is used for purposes other than household use, such as commercial use.

The one (1) year warranty covers the mainboard and control PCB, motor, heater and power supply. However, this warranty does not cover parts (i.e. accessories, front and rear cover, water tank, silicon gasket, hose, fuse, heating plate, plastic cover, interior and exterior casing) that are subject to wear and tear, rust, stains, or corrosion.

This one-year limited warranty does not cover Products sold **“AS IS”**, **“FACTORY RECTIFIED”**, or by a non-authorized reseller.

THERE ARE NO EXPRESS WARRANTIES OTHER THAN THOSE LISTED OR DESCRIBED ABOVE. ANY IMPLIED WARRANTIES, INCLUDING ANY IMPLIED WARRANTY OF MERCHANTABILITY AND

FITNESS FOR A PARTICULAR PURPOSE, SHALL BE LIMITED IN DURATION TO THE PERIOD OF TIME SET FORTH ABOVE. **TYLR'S** TOTAL LIABILITY FOR ANY AND ALL LOSSES AND DAMAGES RESULTING FROM ANY CAUSE WHATSOEVER INCLUDING **TYLR'S** NEGLIGENCE, ALLEGED DAMAGE, OR DEFECTIVE GOODS, WHETHER SUCH DEFECTS ARE DISCOVERABLE OR LATENT, SHALL IN NO EVENT EXCEED THE PURCHASE PRICE OF THE PRODUCT. **TYLR** SHALL NOT BE RESPONSIBLE FOR LOSS OF USE, COMMERCIAL LOSS, LOST REVENUE OR LOST PROFITS, OR OTHER INCIDENTAL OR CONSEQUENTIAL DAMAGES. THIS WARRANTY IS SUBJECT TO CHANGE WITHOUT NOTICE.

IMPORTANT: Please present sales invoice as proof of purchase whenever you require our service during the warranty period.

www.tylrhome.com