

ARCTIC CASING DOOR



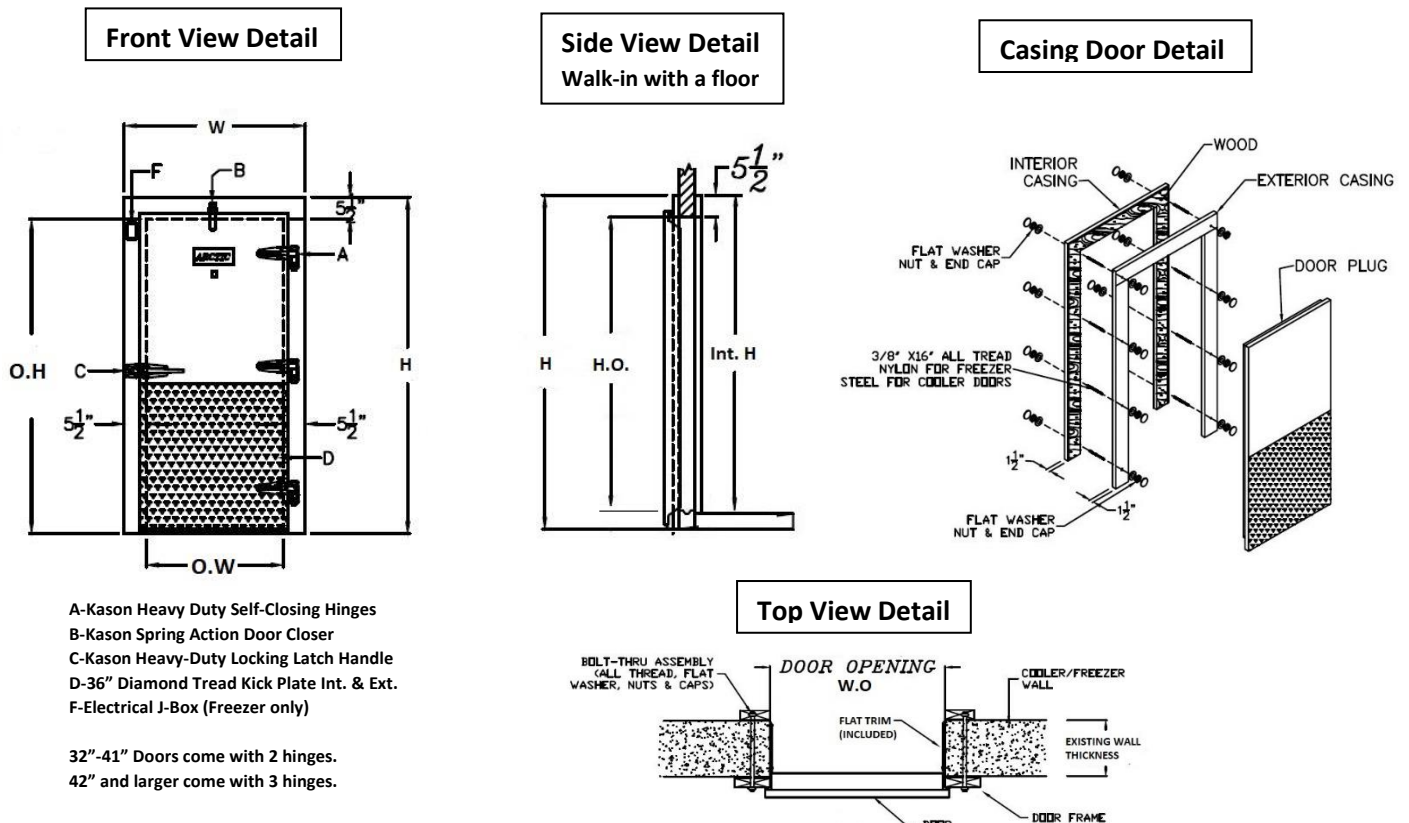
Arctic casing doors are designed to replace a walk-in cooler or freezer door of any manufacturer. This door is designed intelligently and built to last. All Arctic casing doors are overlapped, self-closing with magnetic gasket and modular design.

Arctic offers two types of casing doors:

- 1) **Cooler Casing Door:** with choice of left or right hinges
- 2) **Freezer Casing Door:** with choice of left or right hinges

Standard Features

- » Made to fit most standard opening door sizes, secures to existing door frame via a pass-thru bolt anchoring system.
- » Available for walk-ins with and without floor.
- » All Arctic casing doors are foamed-in-place with CFC-free urethane foam.
- » Door plug attached to the frame with heavy-duty, self-closing, cam-action, gravity hinges that are mounted onto steel plates with machine bolts, ensuring maximum strength and eliminating sagging.
- » Standard exterior door hardware includes interior and exterior 36" high aluminum diamond-tread kick-plates, heavy-duty locking door latch handle, heavy-duty hydraulic door closer to ensure a gentle and complete door seal.
- » All Arctic casing doors and frames are reinforced with pressure treated wood backing. This framing provides extra support and rigidity to prevent warping, racking, or twisting.
- » Factory preinstalled door frame heater and electric junction box on Freezer Casing Doors.



Thermometer Display, Light Switch, PRV (for freezers), and light fixture are not included in casing doors.

ARCTIC CASING DOOR FORM



WALK-IN COOLERS AND FREEZERS
 BY ARCTIC INDUSTRIES INC.
 9731 N.W. 114th WAY MIAMI FLORIDA 33178
 PHONE: (305) 883-5581

JOB NAME: _____

OPENING WIDTH (O.W): _____ (see drawing for reference)

OPENING HIGHT (O.H): _____ (see drawing for reference)

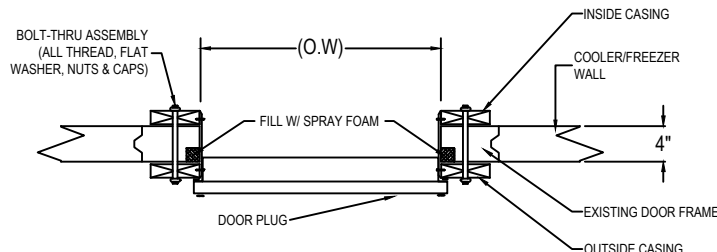
APPLICATION: ____ COOLER, ____ FREEZER

INTERIOR FINISH: _____

EXTERIOR FINISH: _____

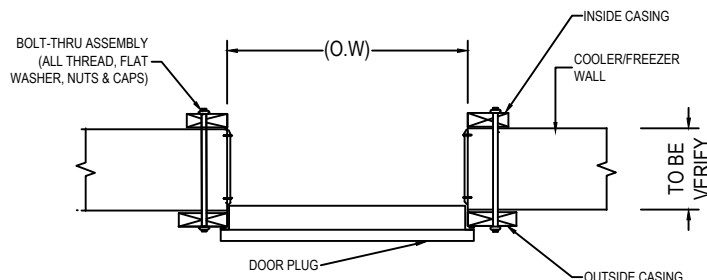
NOTE: PLEASE SELECT CHECKBOX BASED ON YOUR APPLICATION.

***Standard size doors (34"x78" and 36"x78" openings) have a 25% restocking-fee plus shipping charges. Custom casing doors are NON-Returnable.*

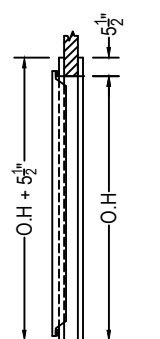


CASING DOOR FOR EXISTING DOOR

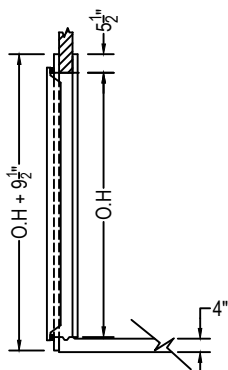
NOTE: REMOVE THERMOMETER, SWITCH AND LIGHT FROM EXISTING FRAME AND REINSTALL IN THE NEW CASING



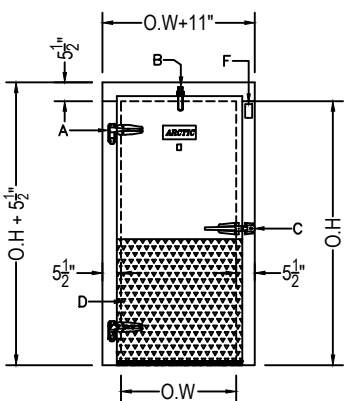
CASING DOOR FOR OPENING



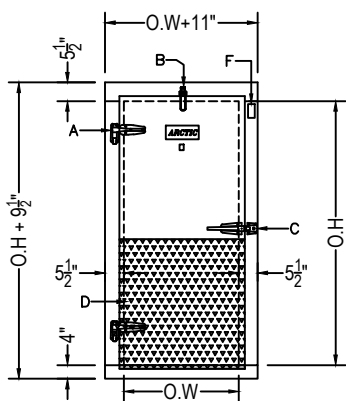
NO STEP-IN FLOOR



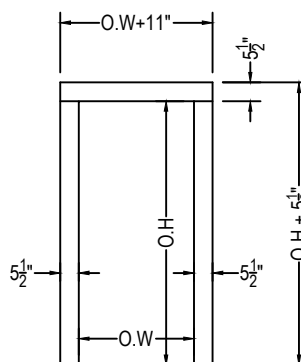
WITH STEP-IN FLOOR



EXTERIOR CASING DOOR NO STEP-IN FLOOR



EXTERIOR CASING DOOR WITH STEP-IN FLOOR



INTERIOR CASING DOOR

LEFT HAND DOOR SHOWN

SELECT HINGE SIDE FOR DOOR

- RIGHT HAND
- LEFT HAND

LEFT HAND DOOR SHOWN

SELECT HINGE SIDE FOR DOOR

- RIGHT HAND
- LEFT HAND

SIGNED APPROVED PRINT MUST BE REC'D. B/4 FAB.

- APPROVED AS DRAWN
- APPROVED AS NOTED
- NOT APPROVED RESUBMIT

SIGNED _____
 DATE: _____