



ul. Stanisława Sulimy 1, 82-300 Elbląg  
tel.: +48 882 350 409  
lab@greenabsolutes.eu

**CERTIFICATE OF ANALYSIS no 2017/209/01**

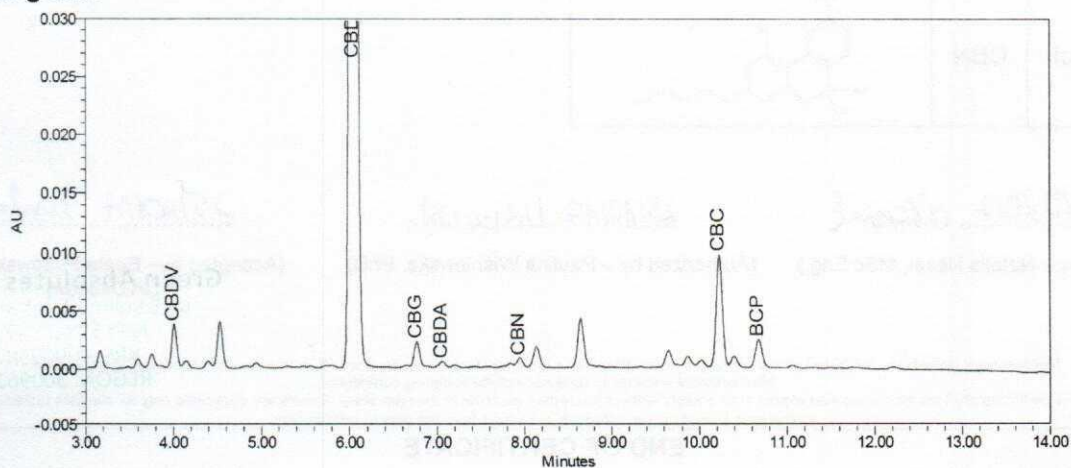
Sample description			Sample amount
Hemp seed oil with CO <sub>2</sub> hemp extract			1 ml
Sampling location	Sampling date	Sample reception date	Analysis date
-	24.10.2017	24.10.2017	24.10.2017
Sample name	Laboratory code	Sample collected	
HE10/13/17/GA	HE10/13/17/GA	Joanna Hull	
Non compliances	-		
Additional information	-		

**Results of analysis:**

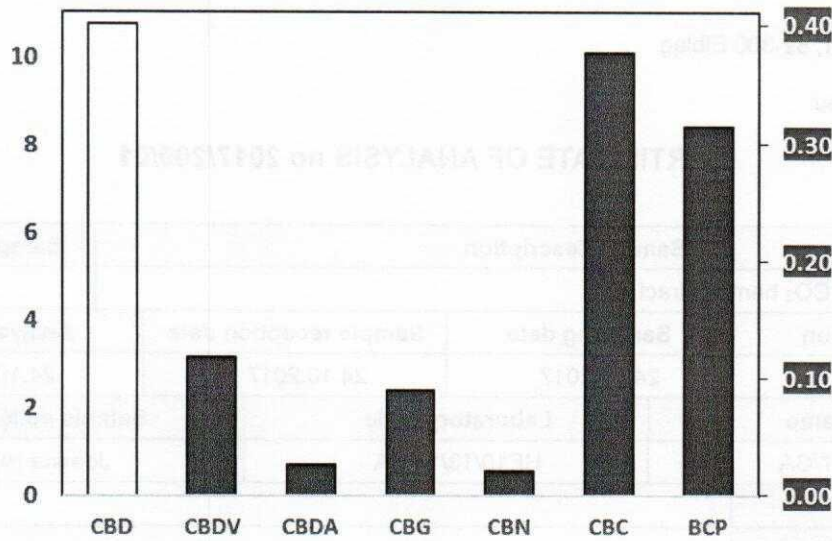
No	Code	Compound	Analysis method	Result	Uncertainty	Unit
Cannabinoid content:						
1	HE10/13/17/GA	CBD	HPLC (internal monograph)	<b>10.7</b>	---	% (w:w)
2		CBDV		<b>0.12</b>	---	% (w:w)
3		CBDA		<b>0.03</b>	---	% (w:w)
4		CBG		<b>0.09</b>	---	% (w:w)
5		CBN		<b>0.02</b>	---	% (w:w)
6		CBC		<b>0.38</b>	---	% (w:w)
Terpenoid content:						
1	HE10/13/17/GA	BCP	HPLC (internal monograph)	<b>0.32</b>	---	% (w:w)
THC content:						
1	HE10/13/17/GA	THC*	HPLC (internal monograph)	<b>≤ 0.20</b>	---	% (w:w)

\*-THC as a sum of Δ<sup>9</sup>-THC and THCA

**Chromatogram:**



**Cannabinoid and terpenoid percentages:**



**List of substances:**

No	Substance name	Symbol	Structure	No	Substance name	Symbol	Structure
1	Cannabidiol	CBD		6	$\Delta^9$ -tetrahydrocannabinol	$\Delta^9$ -THC	
2	Cannabidivarin	CBDV		7	Cannabichromene	CBC	
3	Cannabidiolic acid	CBDA		8	Tetrahydrocannabinolic acid	THCA	
4	Cannabigerol	CBG		9	$\beta$ -caryophyllene	BCP	
5	Cannabinol	CBN					

25.10.2017 *Nosal*

(Prepared by – Natalia Nosal, MSc Eng.)

25.10.2017 *Wisniewska*

(Authorized by – Paulina Wiśniewska, PhD)

25.10.2017 *Plutowska*

(Accepted by – Beata Plutowska, PhD, QA Director)

**Green Analytes sp. z o.o.**  
 ul. S. Sumy 1, 83-300 Elbląg  
 NIP: 573-211-71-45  
 KRS: 0000358789  
 REGON: 360962326

Measurement uncertainty estimated as the expanded uncertainty with a coverage factor k=2, corresponding to a level of confidence of about 95%.  
 Measurement uncertainty does not include sampling contribution.  
 This certificate shall not be reproduced except in its entirety, without the written approval of the laboratory. Results are applicable only for samples tested.  
 Complaints should be submitted within 14 days from the date of certification.

**END OF CERTIFICATE**