



EAST FORK®

Founded by potters, East Fork is a Certified B Corporation in Asheville, North Carolina, committed to bringing you beautiful and enduring objects for the home while using our business to contribute to a more joyful and equitable world.





Our Collection Our pottery is made in Asheville, North Carolina with iron-rich clays dug from the American Southeast. The provenance shows on their surface—no two pieces are identical. Iron is pulled within the clay as it is fired, leaving behind our signature speckled surface. Built to last for generations, its durability is trusted by home cooks and chefs in the busiest commercial kitchens.



Cups & Mugs Our cups and mugs are designed and made with an obsessive commitment to comfort. May yours always runneth over.



The Mug

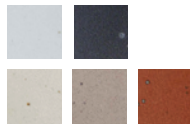
Size: 4.25" x 3.1"

Weight: 1 lb

Holds: 12 oz

Sized for: coffee, tea, cocoa

MSRP: \$44



Tiny Cup

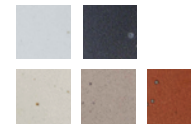
Size: 2.7" x 2.25"

Weight: 5.2 oz

Holds: 3 oz

Sized for: sake, espresso, tea, shots (wheatgrass and otherwise)

MSRP: \$20



Potter's Bowls The five bowls in this form series have steeper sides, rounded bottoms, and flat feet. They're designed to nestle just right inside each other.



Bitty Bowl

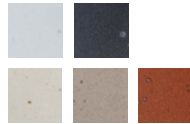
Size: 3" x 1.4"

Weight: 3.4 oz

Holds: 2 oz

Sized for: soy sauce, honey, spent tea bags

MSRP: \$14



Ice Cream Bowl

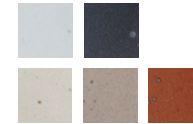
Size: 5" x 2.1"

Weight: 11 oz

Holds: 10 oz

Sized for: dips, pickles, small sundaes

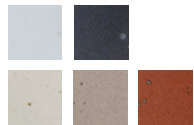
MSRP: \$28





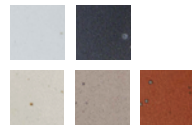
Soup Bowl

Size: 7" x 3"
Weight: 1 lb, 2 oz
Holds: 3.5 cups
Sized for: soups, stews, porridge, bread pudding
MSRP: \$44



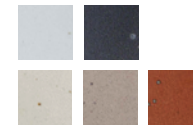
Popcorn Bowl

Size: 9" x 4"
Weight: 2.2 lbs
Holds: 8 cups
Sized for: ramen, large salads, family-style serving
MSRP: \$88



Mixing Bowl

Size: 11.3" x 4.6"
Weight: 3 lbs
Holds: 16 cups
Sized for: buffet serving, baked goods display
MSRP: \$180



Shallow Bowls The three bowls in this form series are wide slung, have an elegant trimmed foot, and are built to nestle nicely within each other.



Breakfast Bowl

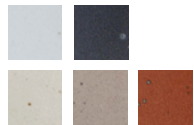
Size: 5.4" x 1.8"

Weight: 11 oz

Holds: 10 oz

Sized for: small soup, desserts, yogurt

MSRP: \$28



Everyday Bowl

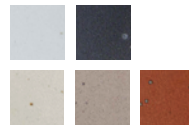
Size: 8" x 2.25"

Weight: 1.3 lbs

Holds: 3.5 cups

Sized for: salad, noodle dishes, grain bowls

MSRP: \$44



Weeknight Serving Bowl

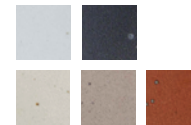
Size: 10.3" x 2.4"

Weight: 2 lbs, 10 oz

Holds: 9 cups

Good for: family-style and buffet serving

MSRP: \$170



Plates Designed from the point of view of potters, service industry veterans, and home cooks. We considered every detail for a plate suite that was functional, beautiful, and made to last.



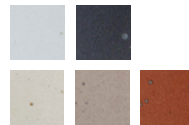
Cake Plate

Size: 6.5" x 0.75"

Weight: 9 oz

Sized for: rolls, cookies, desserts

MSRP: \$24



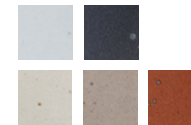
Side Plate

Size: 8.5" x 1"

Weight: 1 lb

Sized for: sandwiches, appetizers, extra share plate

MSRP: \$38





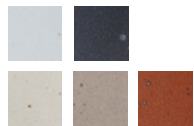
Dinner Plate

Size: 10.5" x 11.3"

Weight: 1.6 lbs

Sized for: entrees, large appetizers, breakfast

MSRP: \$48



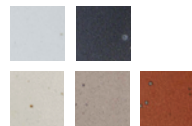
Serving Platter

Size: 14.5" x 1.5"

Weight: 4 lbs, 4 oz

Sized for: buffet, dessert bar, countertop pastries

MSRP: \$180



The Coupe

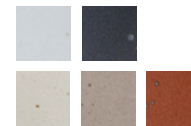
Size: 10.75" x 2"

Weight: 2.5 lbs

Holds: 16 oz

Sized for: entree salads, pasta, family-style serving

MSRP: \$54





EARTHY, WILD, SMOKEY

■ Forage Moon

hinoki, mushroom,
dirt, firewood

MYSTERIOUS, RAINSTORM, VELVETY

■ Tender Earth

petrichor, loam,
anemone bulbs and blossoms,
tobacco flower

INVIGORATING, CLEARING, LUSCIOUS

■ Still Life

fig leaf, sea salt, basil, wild
mint, amber, rosemary

CRISP, GROUNDING, HERBACEOUS

■ Odd Woods

cypress, cedar leaf,
palo santo, tobacco flower

DELECTABLE, WARM, WELCOMING

■ Nightcap

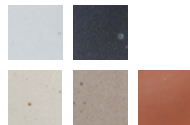
star anise, clove, crushed
mint, cascarilla bark

East Fork Candles Our exclusive candle collection features reusable vessels and joyful, earth-centric scents. Developed in collaboration with Joya Studios in Brooklyn, New York.



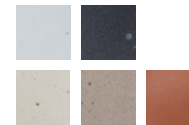
Small Candle

Size: 3" x 1.4"
Holds: 2 oz
Burns for: 25 hours
MSRP: \$32



Large Candle

Size: 5" x 2.1"
Holds: 10 oz
Burns for: 60 hours
MSRP: \$68



"We've considered the functionality of our work from every angle—from how well they hold up in the dishwasher, how easy they are to pick up from the table, and how light reflects off the semi-matte surface."

– **Connie Matisse, East Fork's Co-Founder**



Core colors are available year-round. Designed to harmonize with the other glazes in the core palette, you'll also find that the neutral colors complement but not overshadow the food served on them.

Our pottery is made by humans. Differences in glaze applications and surface can be expected and embraced.



Panna Cotta

A warm, tan-toned off-white



Eggshell

A cool, airy, grayish white



Morel

A warm, round,
pale brown



Amaro

A stately, burnt
terra cotta



Black Mountain

A lustrous
graphite black

Wholesale Terms and Conditions

General Terms All orders are subject to approval and acceptance by East Fork Pottery, LLC. By placing an order with East Fork, customer agrees that the transaction shall be governed by these Terms and Conditions. These Terms and Conditions apply to all orders and can only be modified by written authorization from East Fork.

Terms of Payment East Fork reserves the right to adjust prices at any time. All orders are subject to prices in effect at the time of order entry. Orders with ship dates greater than 90 days from the date of order entry are subject to price review and product availability. Posted prices do not include taxes or charges for shipping and handling. All such taxes and charges will be added to your merchandise total on your order confirmation.

Full prepayment is required, including shipping (quoted per individual order) and applicable tax. East Fork accepts all major credit cards as well as ACH, wire transfer, Bill.com and check. No credit card fees apply to East Fork orders.

Sales Tax Unless an approved tax exemption form is provided at the time of order submission, sales tax will be charged based on the ship to address on your purchase order. Specific state tax exemption forms must be properly completed and signed to be kept on file for future orders.

Shipping & Freight Shipping is quoted per individual order and will be provided prior to final order confirmation and payment. East Fork does not ship via third party shipping, unless approved in writing by an East Fork representative. In the case that improper or inaccurate shipping information is provided, East Fork may bill the customer for freight charges on a separate invoice from the original order.

Availability & Lead Times All products are subject to availability. Customer will be notified if items are out of stock and provided with a confirmed lead time. East Fork will charge payment once the lead time is confirmed and accepted by customer. All orders will ship complete, unless otherwise requested. Please note make to order lead times may extend to 8-12 weeks depending on order size and production capacity.

Order Changes & Cancellations Once an order confirmation is sent by an East Fork representative, the order is considered final and all order changes are subject to approval by East Fork. Please contact wholesale@eastfork.com for the status of your order prior to canceling. No cancellations are accepted once the order has shipped. Cancellations are subject to a 15% handling charge.

Product Quality Due to the nature of our clay, glazes, production and firing process, slight variations in texture, hue, iron spots and size may occur. East Fork is constantly improving the quality of our material and process. Therefore, East Fork may change the specifications of its products at any time without notice. Any differences in glaze applications and surfaces are there to embrace.

East Fork Pottery is dishwasher and microwave safe.

Our glazes are free of lead and other heavy metals. We fire our pots at high temperatures, which ensures that all of the glaze components are entirely encapsulated and will not leach into your food. We send our glazes to an independent, third party lab to be tested with an acid test for food safety before being sent out to customers. Similarly, we also send glazes to ensure that they are compliant with both the FDA and California's Prop65 standards.

Returns East Fork does not generally accept returns on wholesale and hospitality orders. Customer should inspect deliveries immediately upon arrival for carrier damage. No returns are accepted 30 days from arrival date. All return requests require an East Fork return authorization. Authorized returns are subject to a 25% restocking fee and must be received in unused, like-new condition with all packaging intact. If East Fork issues a return authorization, all returns must be received within 30 days after the return authorization is issued. Customer will be credited, minus the 25% restocking fee, once the product is received and inspected on East Fork premises. East Fork will not cover original shipping charges.

ALL SALES OF CUSTOM PRODUCTS ARE FINAL.

ALL SALES OF SEASONAL, NON-CORE PRODUCT ARE FINAL.

Web Commerce Terms East Fork requires all applicable information relating to a Retailer's website, prior to the sale of products. East Fork Pottery must be listed as the manufacturer on any online marketplace. East Fork reserves the right to accept or reject any component or context of a Retailer's website relating to the products or East Fork brand. East Fork does not allow the resale of its products through third party retailers. East Fork products may not be sold below MSRP on any online marketplace.

2024 Candle Pricing

Opening orders begin at \$1,500 and reorders must exceed \$500. Additionally, all orders are subject to individual form minimums detailed below.

Large Candle skus ship in a casepack of 12 units
(must be ordered in multiples of 12)

Small Candle skus ship in a casepack of 18 units
(must be ordered in multiples of 18)

Product Name	Vessel Color	SKU	Wholesale/Unit	MSRP /Unit	Casepack	Casepack Cost
The Candle in Still Life, Small	Panna Cotta	502-002-CA1-SL	\$16.00	\$32.00	18 units	\$288.00
The Candle in Still Life, Large	Panna Cotta	502-002-CA2-SL	\$34.00	\$68.00	12 units	\$408.00
The Candle in Tender Earth, Small	Eggshell	502-002-CA1-TE	\$16.00	\$32.00	18 units	\$288.00
The Candle in Tender Earth, Large	Eggshell	502-002-CA2-TE	\$34.00	\$68.00	12 units	\$408.00
The Candle in Odd Woods, Small	Morel	502-002-CA1-OW	\$16.00	\$32.00	18 units	\$288.00
The Candle in Odd Woods, Large	Morel	502-002-CA2-OW	\$34.00	\$68.00	12 units	\$408.00
The Candle in Forage Moon, Small	Black Mountain	502-002-CA1-FM	\$16.00	\$32.00	18 units	\$288.00
The Candle in Forage Moon, Large	Black Mountain	502-002-CA2-FM	\$34.00	\$68.00	12 units	\$408.00
The Candle in Nightcap, Small	Amaro	502-002-CA1-AO	\$16.00	\$32.00	18 units	\$288.00
The Candle in Nightcap, Large	Amaro	502-002-CA2-AO	\$34.00	\$68.00	12 units	\$408.00

2024 Pottery Pricing

Opening orders begin at \$2,500 and reorders must exceed \$1,000. Additionally, all orders are subject to individual form minimums detailed below.

Dinnerware

Minimums: 12 units per sku, per color
(must be ordered in multiples of 12)

All forms available in Core colors - Eggshell, Panna Cotta, Morel, Amaro, and Black Mountain
Please specify requested color per form and quantity on PO

Servingware

Minimums: 4 units per sku, per color
(must be ordered in multiples of 4)

All forms available in Core colors - Eggshell, Panna Cotta, Morel, Amaro, and Black Mountain
Please specify requested color per form and quantity on PO

Form	SKU	Wholesale	MSRP
The Mug	501-001-MU	\$22.00	\$44.00
Tiny Cup	501-001-TC	\$10.00	\$20.00
Breakfast Bowl	501-001-SB1	\$14.00	\$28.00
Everyday Bowl	501-001-SB2	\$22.00	\$44.00
Bitty Bowl	501-001-PB1	\$7.00	\$14.00
Ice Cream Bowl	501-001-PB2	\$14.00	\$28.00
Soup Bowl	501-001-PB3	\$22.00	\$44.00
Cake Plate	501-001-PL1	\$12.00	\$24.00
Side Plate	501-001-PL2	\$19.00	\$38.00
Dinner Plate	501-001-PL3	\$24.00	\$48.00
The Coupe	501-001-CP2	\$27.00	\$54.00

Form	SKU	Wholesale	MSRP
Weeknight Serving Bowl	501-001-SB3	\$85.00	\$170.00
Popcorn Bowl	501-001-PB4	\$44.00	\$88.00
Mixing Bowl	501-001-PB5	\$90.00	\$180.00
Serving Platter	501-001-PL4	\$90.00	\$180.00

Apply for an account and place orders at wholesale@eastfork.com

