

# BrilliantPad™



## Instruction Manual

## Welcome to BrilliantPad™

BrilliantPad offers tremendous benefits for you and your dog:

- Superior hygiene by eliminating the handling of messy waste and soiled pads
- Reduces accidents from “holding it” too long
- Minimizes animals eating waste or playing with soiled pads
- Uses less paper than leading pads for a better environment



**PROVIDES FREEDOM**



**IMPROVES HEALTH**



**BETTER FOR EARTH**



Some training, similar to teaching a dog to use puppy pads, is required.

Transition pads and easy to follow instructions will help you train your dog to adapt to using BrilliantPad.



BrilliantPad is easy to setup, use and maintain. Watch this [setup video](#) to get started

- or -

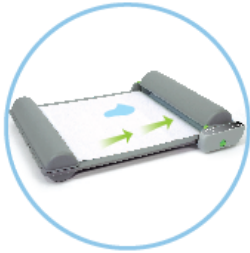


[click here to download this instruction manual.](#)

# Table of Contents

Machine Setup Instructions - 6
Pad Roll Installation - 9
Recommended Location - 12
System Controls - 13
Soiled Pad Removal - 16
Troubleshooting Tips - 17
Training Guide - 19
Cleaning Instructions - 19
Your Total Satisfaction - 19
Subscription Plan - 20
Warranty Information - 20
Important Safeguards - 21
Corporate Information - 22

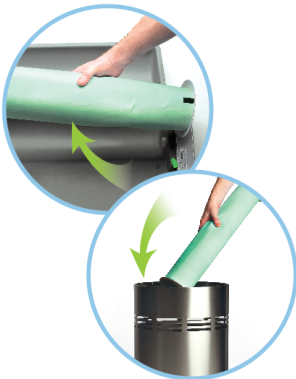
## System Overview



BrilliantPad™ automatically replaces a soiled potty pad with a clean, fresh pad so you don't have to handle messy waste or dirty pads



BrilliantPad seals waste to lock away odors and the system can be left alone for days or even weeks at a time!



When the roll is used up, disposal is fast, easy and clean. Your hands stay mess free the entire time.

## How It Works

Control Module replaces pad automatically or when you manually press Pad Advance button.

BrilliantPad pads have super absorbent polymer to soak up urine and dry out solids. A plastic barrier under each pad seals waste to keep the machine and your floor clean.

Plastic barrier also provides clean grasp surface and the end caps prevent waste from leaking or spilling. Everything that gets soiled or dirty is discarded and replaced.

Replacement pad rolls come with all necessary accessories for use with BrilliantPad.



## Package Contents



- |                    |                        |
|--------------------|------------------------|
| 1. Base (Platform) | 6. Pad Roll            |
| 2. Supply Cover    | 7. Take-up Rod         |
| 3. Waste Cover     | 8. Gear Caps (2)       |
| 4. Control Module  | 9. Training Guide      |
| 5. Power Supply    | 10. Instruction Manual |

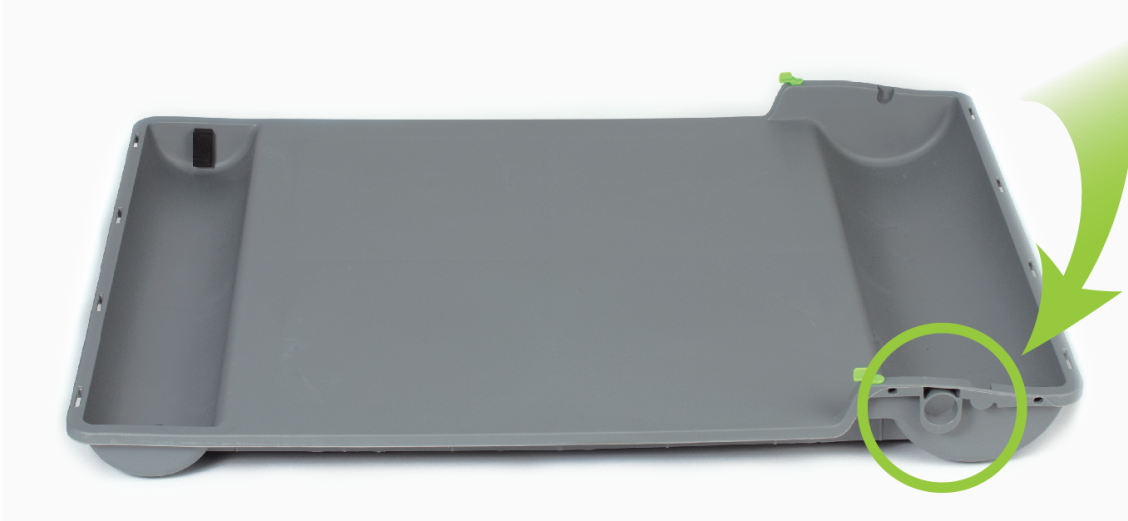
Read this Instruction Manual and BrilliantPad™ Training Guide completely and carefully before setting up and using BrilliantPad™.

## Machine Setup

Read this Instruction Manual and BrilliantPad™ Training Guide *completely and carefully* before setting up and using BrilliantPad.

### Step 1: Put Base on Level Floor

Set base on a hard, flat surface. Feet will contact the floor and platform will face upwards towards the ceiling. Orient the base so the round hole is facing you and on your right:



### Step 2: Attach Covers

Covers may get unseated during shipping, so ensure the covers are properly installed. To install the covers, simply press the clips on the covers onto the bars on the base:



### Step 3: Attach Power Cord

The BrilliantPad™ Control Module contains a motor, computer and user control panel. Connect power cord to control module.



### Step 4: Install Control Module

Orient the Control Module so the BrilliantPad logo faces upwards. Make sure the green knob is turned to the unlocked position, i.e., facing upwards at 12 o'clock.



Push the Control Module gear through the hole in the base. Press it all the way through the hole until two small pegs on the drive module fit into the two small slots in base:

To secure Control Module, lock it by turning the knob clockwise so the knob points sideways to the 3 o'clock position:

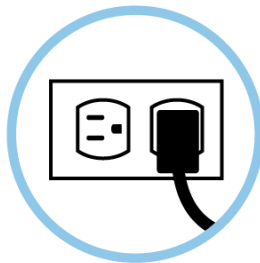


**Step 5: Tuck in wires and plug into wall**

To avoid loose wires, tuck cord into cleats under base.



The plug power cord into wall.



# Pad Roll Installation

## Step 1:

Prepare the take-up assembly by snapping a Gear Cap onto each end of the Take-up Rod:



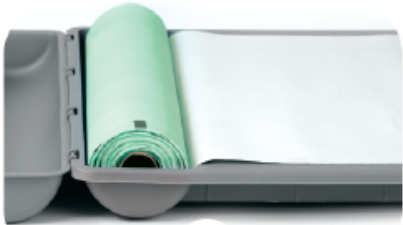
## Step 2:

Drop take-up assembly into waste area near Control Module. Gear Cap will mate to Control Module gear:

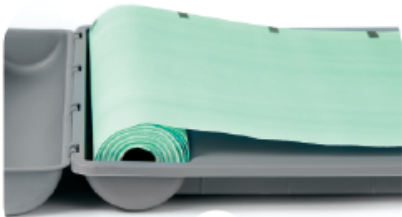


## Step 3:

Put Pad Roll into supply-chamber. Be sure roll feeds from the bottom, not the top. Then pull roll 3 to 6 inches past the take-up rod. When properly installed the white absorbent surface will face the ceiling and the colored plastic lining will face downwards to the platform:



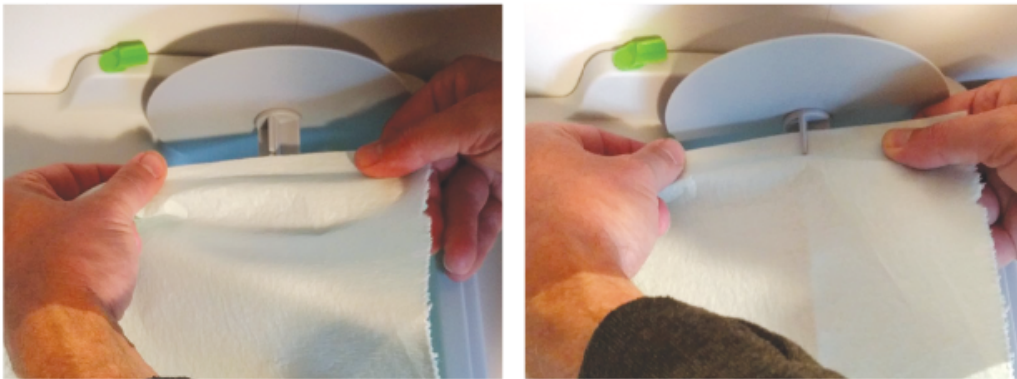
**Correct**



**Incorrect**

**Step 4:**

Tuck paper into upwardly facing clips on each end of the Take-up Rod.



**Step 5:**

Press the **Pad Advance** button on the Control Module to roll up the paper. If the Pad Roll slips out of the clips, re-insert the Pad Roll into the clips.



**Step 6:**

Hold Pad Advance button on the Control Module until paper rotates backwards around the rod several times.





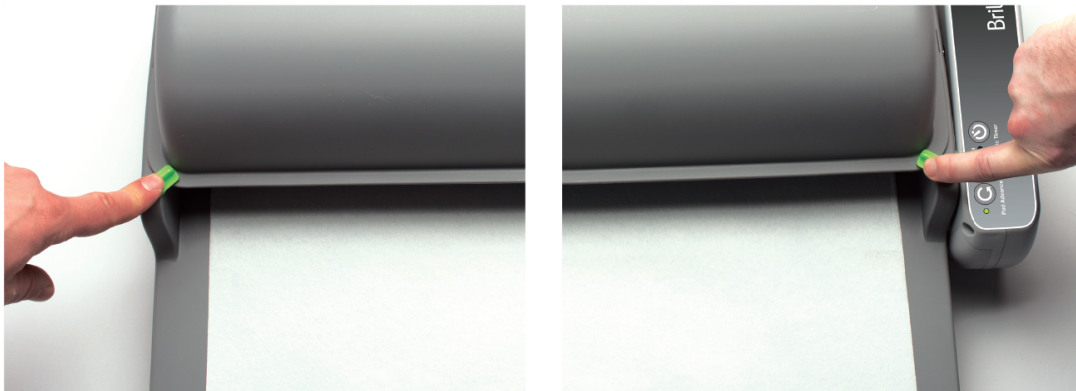
**Step 7:**

Close the Supply and Waste Covers:



**Step 8:**

Rotate latches to secure the Waste and Supply Covers:



## Recommended Location

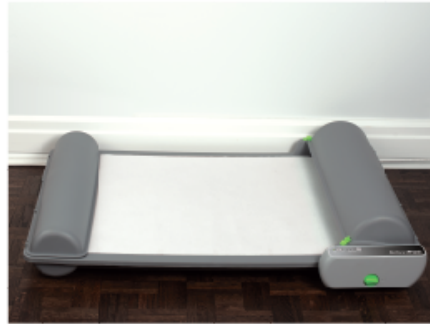
Put BrilliantPad™ where you typically use puppy or potty pads. Select a location that provides unobstructed access for your dog, ideally in an area that allows direct access to all four sides of the machine. If you must place BrilliantPad near walls or furniture, provide as much free access as possible.

 **RECOMMENDED**



Larger end is closer to wall and both long sides are accessible

 **ACCEPTABLE**



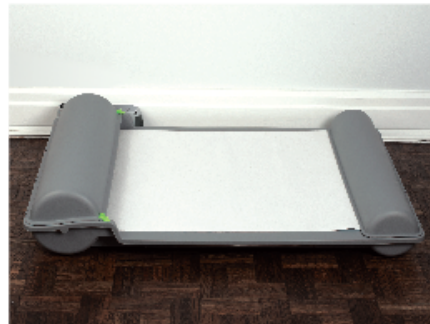
Drive Module is away from wall and one long side is accessible

 **INCORRECT**



Larger end is away from wall, which impedes access

 **INCORRECT**



Drive Module is closer to wall, which impedes functionality



# System Controls

INDICATOR LIGHT Illuminates when power supply is connected:



GREEN	STEADY	Unit has power
GREEN	FLASHING	Animal is detected
RED	STEADY	Pad roll has been completely used up
RED	FLASHING	System requires attention, motor has stalled

Manual Pad Advance:







**PRESS AND HOLD** Pad Advance button to advance pad. Release button to turn off motor.

**PRESS TWICE IN RAPID SUCCESSION** to advance a full sheet.

**Timer Control:**



Press button to cycle through adjustable timed intervals:

DISPLAY	CYCLES PER DAY	INTERVAL
1 2 3 ● ● ● Per Day 	Pad will advance once a day	Once every 24 hours
1 2 3 ● ● ● Per Day 	Pad will advance twice a day	Once every 12 hours
1 2 3 ● ● ● Per Day 	Pad will advance three times a day	Once every 8 hours
1 2 3 ● ● ● Per Day 	System will not advance pad automatically	_____
Main indicator light on steady red	System will not advance pad automatically	See below #5 for more information

1. If an Adjustable Timer mode is selected, the first automatic pad advance will occur 8, 12 or 24 hours after interval is selected. Then system will advance pad again every 8, 12 or 24 hours until Adjustable Timer is changed or deactivated.

2. Pad advance will not occur automatically if system detects the presence of an animal on the platform. If an animal is detected when the Adjustable Timer is scheduled to activate motor, system will wait until dog leaves the platform before activating motor.

3. Manually advancing the paper when an Adjustable Timer mode is selected will not reset the Adjustable Timer.

4. If you want to stop the system once the Automatic Timer starts advancing the pad, press any button to turn off the motor. The System will go out of timed mode and the pad will no longer advance automatically. The desired time mode will need to be reset.

5. When the paper supply runs out, the system will automatically deactivate the Adjustable Timer and the main indicator light will turn steady red. Manual Pad Advance will continue to work. Press the Pad Advance button to reset the system and turn the indicator light to steady green. When ready to reactivate the timer, press the Adjustable Timer button to select desired automatic pad advance cycle.

## Soiled Roll Removal

When fresh Pad Roll supply is empty, unlatch and open the Waste Cover to access the soiled Pad Roll:



The Pad Roll is designed to be fast, easy and clean to replace. There is no need to save the Take-up Rod or Gear Caps since they are biodegradable in most landfills. Simply lift the entire roll assembly from the machine and dispose in trash. The plastic backing provides a clean grasp surface and the Gear Caps prevent waste from leaking or spilling.



The entire Take-up assembly is disposable and made from earth-friendly materials, so you can feel good when you discard them with soiled Pad Roll.

Install new Pad Roll according to previous instructions.

For more information about the materials and process used to make the Take-up Rod and Gear Caps, visit [www.BrilliantPad.com/earth](http://www.BrilliantPad.com/earth).

## Troubleshooting Tips

Error Condition	Solution
<b>Indicator light steady red</b>	Pad Roll is used up. Install a new Pad Roll. Press Pad Advance button to reset the system and Indicator light will turn steady green.
<b>Indicator light flashing red</b>	<p>The system has detected excessive force required to advance the Pad Roll. Try these steps:</p> <ul style="list-style-type: none"><li>● Check for obstructions or objects caught in Pad Roll.</li><li>● Make sure the Pad Roll is installed correctly, with the paper feeding from the bottom.</li><li>● Make sure Pad Roll material is tracking properly and winding onto the take-up assembly between the Gear Caps.</li><li>● Remove Control Module and advance the pad material by hand by rotating take-up assembly -- the paper should advance freely.</li><li>● Reinstall and lock Control Module in place.</li></ul> <p>Press Pad Advance button to reset system. The Indicator light will turn steady green.</p>
<b>Indicator light turns steady red after every full pad sheet advance</b>	<p>The system is not detecting the marks on the underside of Pad Roll.</p> <ul style="list-style-type: none"><li>● Check to make sure that the paper is tracking and centered on the take-up assembly.</li><li>● Check that the small clear circular window in the platform is not obstructed. This window allows the system sensor to “see” the pad marks.</li><li>● Make sure the Control Module is attached fully and locked securely to the Base (Platform).</li></ul>

<p><b>The system is non-responsive, nothing happens when the Pad Advance and Adjustable Timer Buttons are pressed.</b></p>	<p>Ensure electric outlet is on. Remove power brick from wall and press back into wall. If still no power, cycle power to the system by unplugging power cord from Control Module and then reconnecting power cord.</p>
<p><b>Motor turns, but pad material does not advance</b></p>	<p>Make sure pad material is secured to the take-up assembly.</p>
<p><b>Pad is not absorbing liquid</b></p>	<p>Make sure the white adsorbent layer is facing upward and color surface with black marks is facing floor.</p>

## IMPORTANT: Some training is required!

All dogs require some training to adopt new behavior. University-based veterinarians and animal behaviorists helped develop our three-step framework so your dog can become a BrilliantPad™ dog:

**1 ACCEPT**



Let your dog get comfortable around BrilliantPad

---

**2 EXPLORE**



Encourage your dog to explore on BrilliantPad

---

**3 POTTY**



Associate potty activity with BrilliantPad

## Training Plans

The specific steps vary according to age and current habits of your dog, and it takes anywhere from a few days to a few weeks to complete each step.

Remember to have patience. Most dogs can be trained to use BrilliantPad™ with enough praise, love and treats. We can help with your training with our individualized training guides.



If your dog has trouble with a specific training step, relax! Sometimes it takes more than one try. If necessary take a break for a few days and try again.

Visit: [www.BrilliantPad.com/Training](http://www.BrilliantPad.com/Training) for our training video, training tips and training guides.

---

## Cleaning Instructions

1. Remove Control Module and disconnect power.
2. Wipe all surfaces with mild soap and water.
3. Ensure optical windows are clean and not blocked or scratched.

**Do not immerse Control Module in water or spray down Control Module.**

**Do not expose system to excessive sunlight or moisture.**



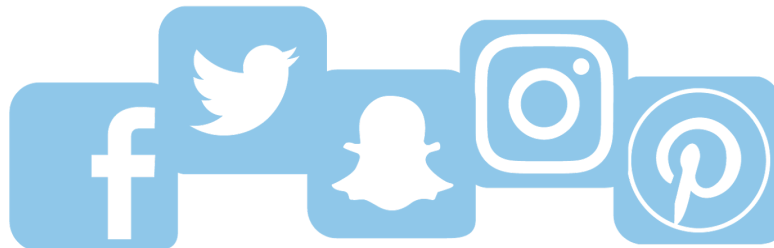
To discourage recurrence of accidents, clean all inappropriately soiled areas with an enzymatic cleaner such *TidyShot* by BrilliantPad™, *Urine Off*, *Liquid Alive*, etc.

**[Buy cleaner here.](#)**

## YOUR TOTAL SATISFACTION IS OUR #1 OBJECTIVE

We appreciate your business and want to do everything we can to ensure your complete satisfaction with BrilliantPad™. If you have any questions, contact us directly at [BrilliantPad.com/Help](http://BrilliantPad.com/Help). **Please do not contact retail store.**

If you enjoy using BrilliantPad, please leave a positive comment or review. However, if you are not completely happy, please contact us before giving us a negative review. We will do whatever it takes to make sure you become a tremendous fan of BrilliantPad.



#BrilliantPad

Please visit [BrilliantPad.com/Help](http://BrilliantPad.com/Help) for help with any issue.



### Need More Rolls?

[BrilliantPad.com/Subscribe](http://BrilliantPad.com/Subscribe) to order replacement pad rolls direct to your home.



### Feeling The Love?

[BrilliantPad.com/Refer](http://BrilliantPad.com/Refer) for discounts and special offers you can share with your friends.



### Need Some Help?

[BrilliantPad.com/Help](http://BrilliantPad.com/Help) or email [help@brilliantpad.com](mailto:help@brilliantpad.com)

### Register For Free One year extension of the BrilliantPad Warranty

Register your product online and extend your warranty from one year to two years: [BrilliantPad.com/register](http://BrilliantPad.com/register). Please visit [BrilliantPad.com/warranty](http://BrilliantPad.com/warranty) for complete details.






## Important Safeguards

- Read this Instruction Manual and BrilliantPad™ Training Guide completely and carefully before setting up and using BrilliantPad.
- Do not let small children play with or near BrilliantPad. Close supervision is always necessary when system is used by or near children. Avoid contact with moving parts.
- Remove all packing material before connecting power cord. Do not plug in power cord in an area where people or animals may walk or trip on it. Do not allow anything to rest on power cord. Do not operate system with damaged power cord. Do not operate system if it malfunctions or has been damaged in any manner.
- Before cleaning, unplug system and remove drive module. To unplug, pull from wall outlet or remove power cord from unit. Do not immerse drive module in water. To protect against electric shock, do not place cord, plug or drive module in water or other liquids.
- Do not place system on an unsteady surface. Do not use system for other than intended use.
- Do not use outdoors.
- Exercise caution if you are pregnant or have an immune deficiency; and do not touch animal waste, soiled paper, or used pad rolls at any time.
- Use only products made by Brilliant Pet with your BrilliantPad system. Do not use accessories or attachments that are not recommended by the manufacturer as they may cause fire, electric shock or injury and reduce the benefits of your warranty.
- Check indicator light periodically and ensure there is fresh paper.

## Corporate Information



BrilliantPad™ is trademark of Brilliant Pet 2 LLC

-  Designed in Chicago
-  Pad Rolls made in USA
-  Machine made in China

Patents Pending

**Mailing Address:**

Brilliant Pet 2 LLC  
Two Prudential Plaza  
180 N. Stetson Ave., Suite 2880  
Chicago, IL 60601

[www.BrilliantPad.com](http://www.BrilliantPad.com)