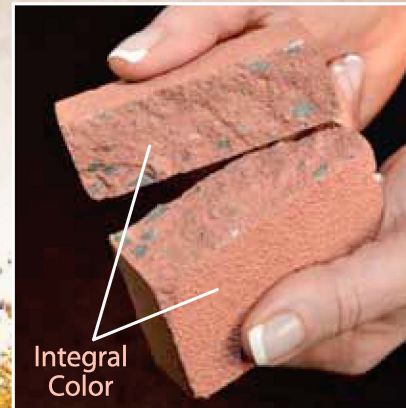
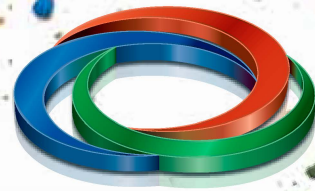


# Integral Color for Ready Mix Concrete

We are the pigment  
of your imagination!



- Vibrant
- Permanent & Non-Fading
- Cost-Effective
- Maintenance-Free
- Eco-Friendly & Non-Toxic



## Integral Color for Ready Mix Concrete

Highly concentrated, requiring less pigment to create vibrant colors.

Permanent, sunfast and weather-resistant.

Packaged in pre-measured bags that disintegrate in the mix for easy, clean use.

Pigments can be added to any concrete mix.

### FINISHING:

**Step 1.** Place the concrete and strike it off using recognized methods.

**Step 2.** Use a vibrating screed or magnesium float. Always work in one direction. Stop the floating if any bleed water appears, as this can cause scaling and discoloration. Wait until the bleed water has evaporated to resume floating.

*Note: A power trowel or a magnesium hand float can be used to create a smooth finish, but use caution; overworking the surface will cause discoloration.*

**Step 3.** Stamping and other finishing techniques (such as broom, rotary, textured patterns, or exposed aggregate) can be performed after floating. Do not let the concrete get too hard before finishing, but allow sufficient time for it to set; rushing steps can alter the final appearance of the concrete.

### PACKAGING:

One bag corresponds to one pre-measured unit of color for one cubic yard (US) or one cubic metre of concrete.

Interstar pigment is packaged in special disintegrating bags that are added directly to the ready mix truck for a clean, easy job. Decreased handling means increased workplace safety and greater efficiency.

*Note: Occasionally, bags may not completely disintegrate due to worn fins, improper mixing, etc. Please instruct finishing crews to watch for paper when the concrete is in the discharge chute. If paper is found, additional mixing may be required. If desired, the pigment bag may be cut open, and the pigment added directly into the concrete mix.*

### LIMITATIONS:

The optimal recommended dose of pigment ranges from 2% (1 bag) to 7% (3 bags) based on the weight of the cementitious materials. The color saturation point is 10% (4 bags). Higher doses will not enhance the color and may significantly degrade the durability of the finished product. Doses below 1% (½ bag) will result in uneven color and a washed-out appearance.

Please see Interstar's warranty for complete details.

### IMPORTANT:

**This color chart is approximate and does not depict the exact colors that can be attained.** These samples were developed in a controlled environment using materials that vary from one location to another. Many factors will affect the color of the finished product, including but not limited to: the materials used, workmanship, finishing techniques, curing / sealing and the weather. This color chart must be used only as a guideline. A test pour is highly recommended to make sure the results meet your expectations.

### DO

- A test pour is highly recommended to be sure the results will meet your expectations.
- Use a qualified decorative concrete contractor who has experience working with integrally colored concrete.
- Use a mix design suitable for your specific application.
- Admixtures will cause variations in the color. If used, they must be used consistently throughout the job to ensure uniform coloring from batch to batch.
- Make sure that every truck contains the same number of yards/metres of concrete.
- Place the concrete at an even thickness throughout.
- Finish all surfaces in the same time frame after placing, and in the same direction when troweling.
- Always use clean tools. Use new brooms if a broom finish is desired.
- Be sure the concrete cures evenly and consistently, and all areas dry at the same rate to avoid color variations.
- Allow the concrete to cure for 30 days before inspecting the color or appearance. Colored concrete continues to lighten until it is fully cured.
- Allow the concrete to cure for approximately 30 days and be sure it is uniformly dry before applying sealer.

### DON'T

- NEVER ADD WATER to the tools, the surface of the concrete or the ready mix truck on site. NEVER.
- Don't use fly ash or slag in the mix design; they will affect the color.
- Don't pour concrete when the weather is unfavorable, or when the temperature is below 50 °F (10 °C).
- Avoid projects that require several small pours.
- Avoid pouring on different days.
- Avoid casting shadows over the area. Concrete poured in shaded areas is a different temperature than that poured in unshaded areas. This may result in color variations.
- Never use calcium chloride or any accelerators.
- Don't finish with long-handled Fresno trowels.
- Don't use dirty or wet tools.
- Don't over-finish, as this may darken the surface.
- Don't fog the surface with water.
- Don't use wet coverings, plastic sheeting, waterproof paper, or liquid membrane curing compounds.







JN-2400R (1 bag) Champagne  
JN-2400R (2 bags) Champagne  
JN-4010R (1 bag) Gold  
JN-4010R (2 bags) Gold  
JN-4411R (1 bag) Bamboo  
JN-4416R (1 bag) Buff  
JN-4416R (2 bags) Buff



JO-4131R (1 bag) Sahara  
BN-1703R (1 bag) Copper  
BN-1703R (2 bags) Copper  
JO-4134R (1 bag) Orange Blossom  
JO-4134R (2 bags) Orange Blossom  
JO-6435R (1 bag) Sedona  
JO-6435R (2 bags) Sedona



BN-1701R (1 bag) Taupe  
BN-2520R (1 bag) Chaps  
BN-2520R (2 bags) Chaps  
BN-1705R (1 bag) Rustic  
BN-1705R (2 bags) Rustic  
BN-1711R (1 bag) Hazelnut  
BN-1711R (2 bags) Hazelnut



BL-3212R (1 bag) Silver Diamond  
JO-7950R (1 bag) Camel  
JO-7961R (1 bag) Desert Sand  
BN-2739R (1 bag) Stone Castle  
BN-2739R (2 bags) Stone Castle  
BN-2681R (1 bag) Willow  
BN-2680R (1 bag) Willow



NR-5011R (1 bag) Shadow Gray  
NR-5010R (1 bag) Gray Cloud  
NR-5010R (2 bags) Gray Cloud  
NR-5171R (1 bag) Midnight Bay  
NR-5157R (1 bag) Monsoon  
NR-5157R (2 bags) Monsoon  
NR-5105R (1 bag) Smoke



BN-2730R (1 bag) Biscuit  
BN-2978R (1 bag) Chocolate Fudge  
BN-2978R (2 bags) Chocolate Fudge  
BN-2550R (1 bag) Khaki  
BN-2550R (2 bags) Khaki  
VT-3450R (1 bag) Olive  
VT-3450R (2 bags) Olive



Ready Mix Color Chart



JO-7960R (1 bag) Goldenrod  
JO-7960R (2 bags) Goldenrod  
BN-2530R (1 bag) Nutmeg  
BN-2530R (2 bags) Nutmeg  
BN-2531R (1 bag) Potter's Clay  
BN-2531R (2 bags) Potter's Clay  
JO-4159R (1 bag) Mystic Shadow



RG-2827R (1 bag) Baja Red  
RG-2827R (2 bags) Baja Red  
RG-2832R (1 bag) Salmon  
RG-2832R (2 bags) Salmon  
RG-2835R (1 bag) Egyptian Red  
RG-2835R (2 bags) Egyptian Red  
RG-2846R (2 bags) Raspberry



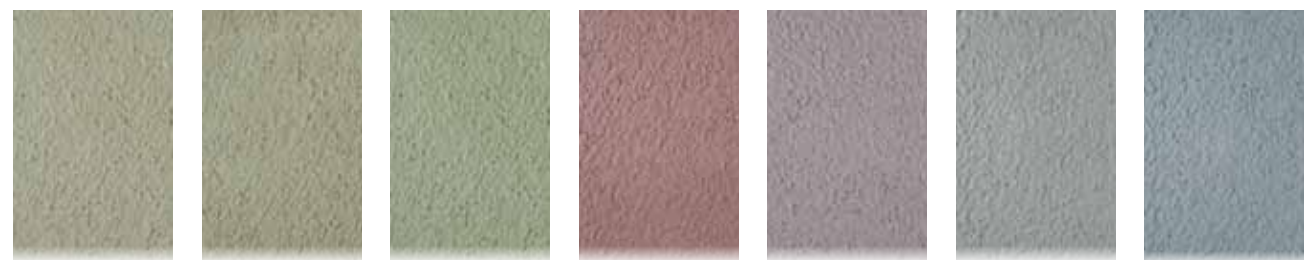
BN-1711R (3 bags) Santa Fe Tan  
BN-1714R (1 bag) Santa Fe Tan  
BN-1714R (2 bags) Santa Fe Tan  
RG-3077R (1 bag) Redwood  
RG-3077R (2 bags) Redwood  
RG-3072R (1 bag) Maroon  
RG-3072R (2 bags) Maroon



BN-2680R (2 bags) Balsam Wood  
BN-2680R (3 bags) Balsam Wood  
BN-1616R (1 bag) Plum  
BN-1616R (2 bags) Plum  
BN-2510R (1 bag) Maple  
BN-2510R (2 bags) Maple  
BN-2510R (3 bags) Maple



NR-5105R (2 bags) Steel Blue  
NR-5105R (3 bags) Steel Blue  
NR-5177R (1 bag) Steel Blue  
NR-5177R (2 bags) Steel Blue  
NR-5790R (1 bag) Black Onyx  
NR-5790R (2 bags) Black Onyx  
NR-5790R (3 bags) Black Onyx



VT-2244R (1 bag) Moss  
VT-2244R (2 bags) Moss  
VT-2244R (3 bags) Moss  
RG-2870IR (2 bags) Desert Red  
CB-2580IR (2 bags) Cabernet  
CB-2590IR (1 bag) Blue Sea  
CB-2590IR (2 bags) Blue Sea

Not for Outdoor Use