

# INSTRUCTIONS & TECHNICAL MANUAL

# BATHLIFT

BATHLIFT  
MODEL CRM2015

**Australian Distributor**  
Gong Life Care Solutions  
Suite 1, Ground Floor, Enterprise 1  
Innovation Campus, Squires Way  
North Wollongong, NSW 2500  
Australia  
1300 907 280  
info@gonglcs.com.au  
www.gonglcs.com.au



## INDEX

<b>Important Safety information</b> .....	2	<b>Operation</b> .....	4	<b>Floor Anchor Fixing</b> .....	8
<b>The product</b> .....	3	<b>Indicator Lights</b> .....	6	<b>Contained in your Delivery Carton</b> .....	8
<b>The battery and Charger</b> .....	3	<b>Maintenance</b> .....	6	<b>Guarantee/Weights &amp; Measurements</b> ..	8
<b>Temperature Gauge and probe</b> .....	4	<b>Installation</b> .....	7	<b>CE and EMC Approval</b> .....	8
<b>Hand Held Controller</b> .....	4	<b>Wall Mounting the Unit</b> .....	7	<b>Environmental Information</b> .....	8



## IMPORTANT SAFETY INFORMATION

It is important this instruction manual is retained with the bath lift for future reference. Should the bathlift be sold or transferred to another owner or should you move house and leave the bathlift, always ensure this instruction manual is available for the new owner to know the functioning of the bathlift and the relevant warnings. These warnings are important and **MUST** be read before installing or using the bathlift.

### INSTALLATION

- It is imperative the installation is carried out safely and correctly and is undertaken by an experienced professional familiar with building construction.
- Ensure there are no pipes or electrical cables that could be damaged when fixing the unit to the wall and floor.
- When fixing to a “studded” or non-solid wall, reinforcement may be required to ensure the bathlift will take the person’s weight and operate safely.
- The maximum lifting weight is 127 kgm (280 lbs) and **MUST** not be exceeded.

### CHILD SAFETY

- Do not allow children to play with the bathlift. It is not a toy.
- Remove the battery to a safe and secure place if there is a possibility children will have access to the bathlift.

### USE

- The battery charger must not be used in the bathroom.
- The battery weighs 1.5 Kgm (3.3 lbs) and should be handled carefully.
- Keep the battery well charged.
- The belt must be located in the floor anchor correctly. Make sure the retaining discs prevent the belt from coming out.
- Always be aware of the floor anchor fitting. **DO NOT TRIP OVER IT.**
- If you have any doubt as to your ability to use the bathlift totally unattended you should ensure that you have a capable carer present.
- Make use of the grab rail to steady yourself when entering or exiting the bath.
- The maximum lifting weight of 127 kgm (280 lbs) should not be exceeded and the bathlift used only for the purpose it is intended.
- The bather should take care to keep fingers away from where the belt enters the bathlift cover.
- When used for the first few times the bather should accustom themselves to the lifting and lowering motion particularly the sideways re-adjustment as the belt is being fed from one side only.
- Ensure the battery charger lead is plugged into the small socket on the battery shown by the arrow and **NOT** in the large central socket.
- Do not clean the belt with bleach or similar skin irritating substance.

## THE PRODUCT

The bathlift is a motorised device designed for the use of the elderly and those who find that getting into and out of a bath has become increasingly more difficult. With its use, access becomes safe and easy.

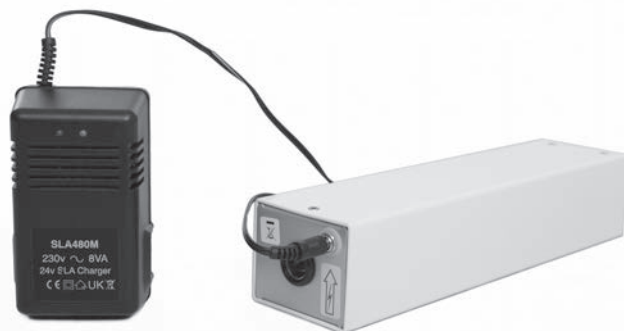
Operated by two control buttons it will gently lower and raise the bather into and out of the bath when the user is seated on the reinforced polypropylene seating belt. This flexible belt is firmly secured to a winding shaft within the cabinet case and the other end anchored to a sturdy floor fitting at the side of the bath.

### Features

- The unit is powered by a 24-volt DC rechargeable battery pack. No mains electricity supply is required in the bathroom. Operation is by control buttons to raise and lower the bathlift as required.
- Indicator lights in green and red shows the battery is in operation and the battery condition. An audible alarm warns of a low battery.
- A water thermometer with immersible probe is fitted which states the temperature of the water, to avoid the risk of scalding.
- Hand held remote controller, which is water-resistant.
- A safety feature is built into the bathlift which prevents excessive tensioning if the control button is held down too long when stretching the belt across the bath.
- A belt reversal device is also fitted to prevent the belt from rolling up in reverse.
- A micro switch prevents the bar being taken into the unit if the UP button is pressed too long.
- Stainless steel is used to fabricate the interior of the cabinet to provide improved corrosion resistance.

## THE BATTERY AND BATTERY CHARGER

Following the installation the battery should be charged for a minimum of 15 hours



### IMPORTANT

Ensure the charger lead is plugged into the small socket indicated by the arrow. **NOT** the large central socket. The charger must not be used in the bathroom.

To charge the battery, plug the charger into a 13-amp mains socket and the charger connector lead into the small socket of the battery.

The charger has a red and green indicator light. When the charger is switched on and it is connected to the battery, the green indicator light will change to red. This indicates that the battery is being charged and the state of the battery is low. As the battery receives its full charge the red light will fade and the green light will come on until only the green light is seen. Since the charging rate is small the battery may be left on charge without any detriment to the battery. Indeed it is important for batteries to be fully charged as under charged batteries can deteriorate much quicker.

It is important that the battery is charged regularly as this will prolong the life of the battery cells. It is recommended that the battery is charged at least once a week. As the battery becomes older so the number of charges per week should increase.

## TEMPERATURE GAUGE AND PROBE:

The probe is located on the bottom right hand side of the unit. The probe has a small plastic disc attached and should be attached to the side of the bath under the water line. Briefly press either button and the gauge will show the water temperature for about 20 seconds.



## HAND HELD CONTROLLER

The Hand Held controller has 'UP' and 'DOWN' buttons and operates in the same way as the control buttons on the unit itself. It can be operated by the bather or by a helper. For easy recognition the GREY arrowed button is for DOWN into the water. There is a suction pad on the controller to attach it to the bathlift or bathroom wall, whichever is convenient. The Hand control is also water tight should it fall in the bathwater.

## OPERATION

With the battery fully charged and the temperature probe in position the bathlift can be used.

### STEP 1

Place the battery in the hole on the left-hand side of the bathlift. Ensure it is firmly pushed into position.



### STEP 2

Press the down button and feed out the belt sufficiently for it to reach the mounting bar. When the hand held remote controller is used – either by the bather or by an assistant, the device will operate the bathlift without the need to use the control buttons on the cabinet face.



### STEP 3

To fit the belt sleeve, fold the belt as shown and slip on the sleeve.





**STEP 4**

By rotating the discs the anchor bar can be located into the mounting bar itself. Turn the discs to ensure the anchor bar is positively locked in. **THIS IS VERY IMPORTANT.**



**STEP 5**

Tension up the belt by pressing the 'UP' button until the belt is tight across the bath. The automatic cut out will stop the belt when it is tight.



**STEP 6**

The bathlift is now ready for the bather to sit on the belt, ease their legs over the side of the bath and into the water holding on to the inbuilt grabrail for extra support.



**STEP 7**

Now press the DOWN button which will slowly and gently lower the user to the bottom of the bath. You can now relax and enjoy a refreshing bath.



### STEP 8

When bathing is finished press the UP button and this will raise and return the user back to the original bath height, so that the bather can again hold on to the grabrail and place their feet over the bath edge and onto the floor.



### STEP 9

With the belt slackened, free the end secured to the floor bracket and remove the belt sleeve. By pressing the up button once more the seating belt will retract back into the cabinet, ready for future use. Leave about 75 mm (3") of the belt outside the unit.



## INDICATOR LIGHTS

When the buttons are pressed, the unit will 'come to life' and the green indicator light will illuminate together with the temperature module. If the unit is not in use for more than 30 seconds it will 'go to sleep'. This conserves the battery. When the button is pressed the unit will again illuminate and the direction the belt is moving will be shown as arrows on the screen. When your finger is taken

off the button the screen will show the temperature of the water.



A red light will appear on the front of the bath lift to indicate that the battery is low, together with two beeps of an audible alarm. After hearing the alarm you should charge the battery IMMEDIATELY. If you continue to use the bath lift without charging the battery, the red light will continually flash and the alarm will sound constantly. An empty battery symbol will appear on the screen. The bath lift will not work in the down position. However it will work in the up position, thus enabling the bather to get back to the top of the bath and get out of the bath safely.



## MAINTENANCE

With attention to regular recharging the battery should provide about 4 years of reliable service. A replacement battery pack can be obtained from the supplier of the bath lift.

It is important to mention that batteries at the end of their working life must be disposed of environmentally safely – e.g. they must NOT be disposed of on an open fire or by any other hazardous means.

Whilst stainless steel is used to totally eliminate rust on the interior of the cabinet it is important to understand that as the unit must have entry points for the battery and belt it is NOT waterproof **WATER CAN GAIN ACCESS.**

When showering, care must be taken to avoid soaking the unit with an excess of water which could damage the interior electronics. There is a purpose made shower cover protection cap which your Supplier can supply, which would help to protect the bath lift.

Apart from the above, the bathlift needs no maintenance other than normal good housekeeping attention to cleanliness. However, do not use bleach or other skin irritant substance to clean the belt. The bathlift will give constant service for many years to its user.

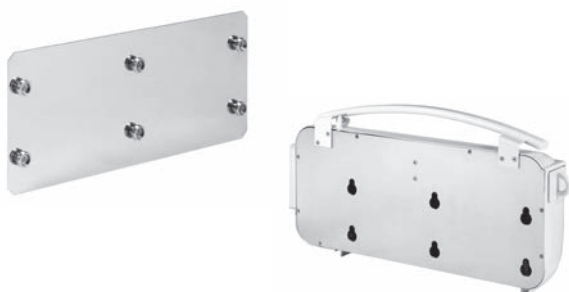
## **INSTALLATION**

**Because it is imperative that the installation is carried out safely and correctly, it is strongly suggested that this work be undertaken by an experienced professional, familiar with building construction.**

Walls of various constructions each require different treatment and different fixings. By the operation of the bathlift with its lifting weight of up to 127 kilos (280 lbs) the wall supporting this item and the securing fittings used therewith must be sufficiently robust to meet the purpose.

**Note: this bathlift will not operate 100% efficiently against a bath with a curved exterior.**

## **THE CHASSIS BACKPLATE AND THE WALL PLATE:**



The wall plate has six projecting studs which have provision for screws, bolts or other suitable fixings to pass through the centre of the stud to secure the wall plate firmly to the wall.

The chassis backplate is machined with 6 keyhole slots which allow this steel plate to slot tightly down over the projecting studs. Both plates should fit together flush and level at the bottom edge.

The bath lift should be fitted so that the centre line of the lower three studs are 130mm (approx. 5") above the rim of the bath, allowing a 75mm (3") gap under the bathlift. The edge of the belt is usually positioned near the change from the slope at the back of the bath to the flat bottom of the bath and best positioned to suit the user's comfort.

If a shelf is fitted between the bath and the wall, the bathlift will operate satisfactory up to 100mm (4"). For wider shelves, please contact your supplier for advice and special attachments.

## **WALL MOUNTING THE UNIT**

### **Fitting to a solid brick wall with sound tile or plaster finish:**

Position the wall plate as described above. Use 6 off 6mm screws with sleeves of sufficient length to fix to this type of wall ( MINIMUM LENGTH 80mm). Follow the screw manufacturers instructions for correct fitting. Make certain that all six fastenings are securely fitted.

### **Fitting to a 'studded' or non-solid wall:**

An absolutely secure fixing to this type of wall is vital. Reinforcement of or the insertion of a solid area is essential. Consult a builder experienced in this work. If screwed rods with nuts are used to fix right through the wall together with a load spreading plate on the rearside then make certain that the rods finish FLUSH with the nuts inside the unit – **OTHERWISE THE BELT COULD BE DAMAGED WHEN USED. Position as above.**

## FLOOR ANCHOR FIXING

### Fitting to a stone or concrete floor:

First make certain that there are no services that might be damaged by drilling into the floor. With the unit soundly fixed to the wall extend the belt square across the bath and vertically down the side and position the anchor floor bracket snugly against the bath panel. Use 7 off No: 10 stainless steel screws into suitable rawl plugs to fix to this type of floor. Follow the plug manufacturers instructions for correct fitting.

### Fitting to a wooden boarded floor

Procedure as above. Use 7 off of No: 10 screws to fasten the mounting bar to the floor. If it is thought that the flooring is not adequate to take the strain then add a cross baton under the floor to reinforce the boarding.

## WEIGHTS AND MEASUREMENTS

**Dimensions:** Length 55.5cm (21.8")  
Height 32.5 cm (12.8")  
Depth 11.8 cm (4.6")  
Weight unpacked 11 kilos (24<sup>3</sup>/<sub>4</sub> lbs)  
Weight packed 15.9 kilos (35<sup>3</sup>/<sub>4</sub> lbs)

## GUARANTEE

The manufacturers undertake to provide a full one year's guarantee effective from the date of purchase of the Bathlift subject to (A) the bathlift being unable to fulfil its function due to proven faulty components or faulty workmanship and (B) that the faulty product is returned direct to the factory.

## ENVIRONMENTAL INFORMATION

At the end of its useful life, this product contains materials which when processed correctly can be recovered and recycled. By participating in the responsible recycling of this product you will be reducing the requirement for new raw materials and reducing the amount of material that would otherwise end up in landfill.

The bath lift etc can be taken to your local recycling centre. The local authority will advise you of the collection facilities available for waste electronic products in your area.



## CONTAINED IN YOUR DELIVERY CARTON

- 1 Bathlift with remote control
- 1 Wall mounting Plate
- 1 Belt Sleeve
- 1 Floor Anchor Bar
- 1 Manual (fixing and fixing screws are NOT included)
- 1 Battery Box
- 1 Charger

*(In the light of continuous improvement the company reserves the right to change the specification of the product and manual)*

## MANUFACTURED BY:

### **C R Manufacturing**

Frederick Street  
Waddesdon  
Aylesbury  
Bucks HP18 0LU

**CE CLASS 1 AND EMC APPROVED**  
**EEE Producer Registration No. GA0292UQ**

03/15