



## OWNER'S MANUAL

**Direct Connect Model, MK10A  
(UR89A + CM19A)**

**Wireless A/V Model, MK11A  
(UR89A + VT42A + VR38A)**

**Wireless VGA Model, MK12A  
(UR89A + VT37A + VR38A)**



---

## CONTENTS

---

Introduction .....	3
Quick steps to using <i>Lola</i> .....	3
Getting Started .....	4
Installing the software .....	4
Installing the batteries in the Remote .....	4
System Types .....	5
Direct Connect System .....	5
Wireless A/V System .....	5
Wireless VGA System .....	5
Setting Up .....	6
Direct Connect System .....	6
Wireless A/V System .....	8
Wireless VGA System .....	10
Connecting the Audio/Video Receiver (Wireless Systems only) .....	13
Using <i>Lola</i> .....	15
Media Manager .....	15
The <i>Lola</i> Player .....	17
Using the Remote .....	23
Button Descriptions .....	23
Advanced Options .....	24
Using the Remote to Control Your TV/Audio/Cable system .....	24
Code Search .....	25
Code Identification .....	25
Learning Codes .....	26
Code List .....	27
Home Control .....	30
Controlling X10 Modules .....	31
Changing the Remote's Housecode .....	32
Changing the Remote's Master Code .....	33
Troubleshooting .....	34



---

## INTRODUCTION

---

*Lola* turns your computer into a jukebox for your whole house! *Lola* makes it easy to keep music going at parties, lets you pick songs that suit your mood from anywhere in the home.

*Lola* works with all popular music formats, including MP3, Windows Media, and Real Audio. The *Lola* Media Manager finds and organizes your music files and play lists. It even searches the Internet to find album artwork to use in *Lola*. The *Lola* Media Player and the *Lola* Remote show you your music organized by Artist, Album, and Genre so you can find exactly what you want to hear.

With the *Lola* system you see and hear music from your computer on your home entertainment system. Using either a wireless or direct connection, you'll be able to see and control the *Lola* screen on your TV, while listening to music through your stereo or Home Theater.

Setting up *Lola* is simple. This owner's manual will take you through connecting and using *Lola* one step at a time. It will also show you how to get the most out of *Lola*'s features, and help you if you run into trouble. Thanks for purchasing X10's premier home entertainment product, and welcome to *Lola*!

### Quick Steps to Using *Lola*

Even if you don't read the rest of this manual, please read this. There are few things you have to do for *Lola* to work:

- Install the Software. Use the link in the e-mail (subject "New Software Download Link") that was sent to you shortly after you placed your order.
- Make sure your USB Transceiver is plugged in.
- Put 4 AAA alkaline batteries in the *Lola* remote.
- Connect your computer to your TV with the *Lola* hardware.
- Run the Media Manager and click "Scan My Computer for Media!" *Lola* won't work unless it knows what music you have. That's all there is to it. You can now run *Lola*.

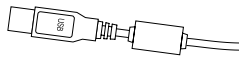
## GETTING STARTED

In order for everything to work, it's important that you follow these steps before setting up the rest of *Lola*.

### Install the *Lola* Software

The first step to installing *Lola* is to install the software from the X10 web site. Use the link in the e-mail (subject "New Software Download Link") that was sent to you shortly after you placed your order.

Follow the instructions on screen as *Lola* is installed. When the installation program asks you to connect it, plug the USB Receiver into a USB port on your computer. Depending on which kit you purchased the USB Receiver will look different. It has a plug on it that looks like this:

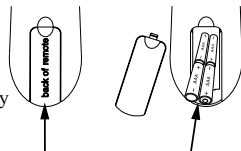


When you plug in the USB Receiver, Windows will tell you that it has found new hardware and the installation will continue automatically. When it's done, continue on with the rest of the *Lola* setup. When it's finished installing, run *Lola* the Windows® Start button.

Note: Place the USB Receiver as far away from your computer and its monitor as its cord allows.

### Install the batteries in the Remote.

Push the tab and lift off the battery cover. Insert four AAA alkaline batteries, taking care to match the + and - marks in the battery compartment. Press PC on the remote.



Windows® is a registered trademark of Microsoft Corporation.

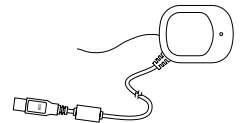
## SYSTEM TYPES

### Which system do you have?

All three system types look similar but the pictures here will help distinguish which one you purchased.

**The Direct Connect System** includes the **CM19A** USB Transceiver. It is used when you want to directly connect your computer's RCA audio and video jacks directly to your TV or Home Theater system.

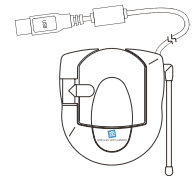
Go to page 6 if you have this system.



**Model CM19A**

**The Wireless A/V System** includes the **VT42A** Wireless Audio/Video Sender with built in USB Receiver. It is used for computers that have an RCA or s-video type Video out jack, which you can connect to the VT42A. You can send the audio and video to a remote TV or Home Theater system using the VT42A.

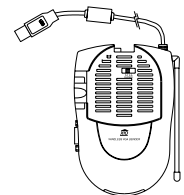
Go to page 8 if you have this system.



**Model VT42A**

**The Wireless VGA System** includes the **VT37A** Wireless Audio/Video VGA Sender with built in USB Receiver. This system is used for computers that don't have an RCA Video out jack. You can see *Lola* on a Remote TV/Home Theater system, and hear your Music on the remote TV as well.

Go to page 10 if you have this system.



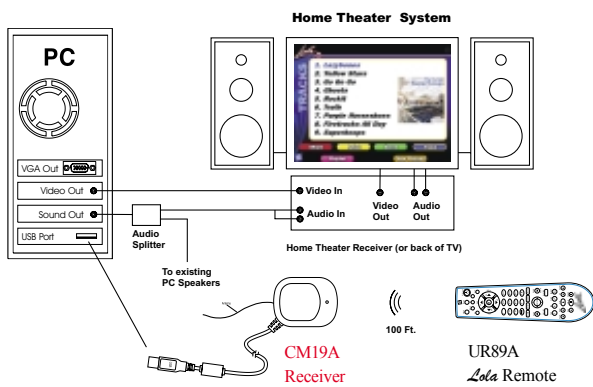
**Model VT37A**

## SETTING UP

### DIRECT CONNECT SYSTEM

#### Parts

- **CM19A** USB Transceiver
- Stereo jack to RCA Audio cable
- Stereo jack splitter
- RCA video cable
- *Lola* Remote Control
- S-Video to Video converter
- S-Video cable



You should have already plugged the CM19A Transceiver into your computer's USB port when you installed the software (page 4).

Note: Place the CM19A Transceiver as far away from your computer and monitor as its cord allows.

## SETTING UP

### DIRECT CONNECT SYSTEM, CONT.

#### Setup

Connect one end of the yellow video cable into the TV Out port on your computer's video card. If your computer has S-Video Out instead of TV out, connect the S-Video cable to the video card, plug the other end into the S-Video to RCA converter, and then plug the yellow RCA video cable into the converter.

Unplug your speakers from your computer's sound card. Plug the mini-stereo jack splitter into the audio out (sometimes labeled "Line Out") jack on the sound card that your speakers were plugged into. Plug the speakers into one side of the splitter. Plug the mini-headphone to RCA cable into the other side of the splitter.

Connect the free end of the yellow video cable into a Video In jack on your TV. Plug the red and white audio cables into Audio In jacks on your stereo receiver or TV, depending on how you want to listen to the music from *Lola*.

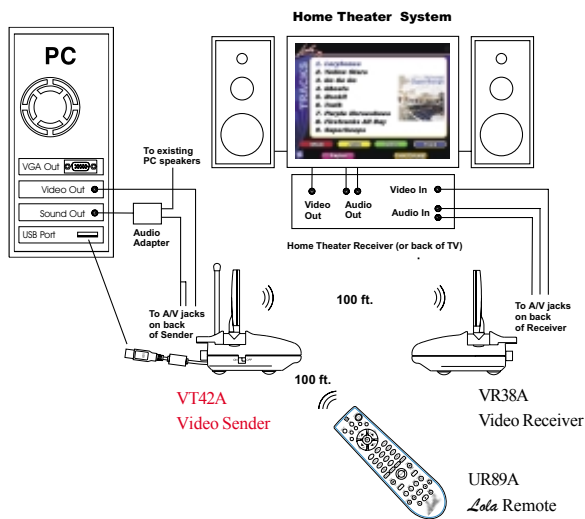
Go to "Using *Lola*" on page 15.

## SETTING UP

### WIRELESS A/V SYSTEM

#### Parts

- VT42A USB Video Sender
- Power-supply for Video Sender
- Power supply for Video Receiver
- RCA A/V cable
- Stereo jack splitter
- Stereo jack to RCA Audio cable
- VR38A Video Receiver
- *Lola* Remote Control
- S-Video cable
- S-Video to Video converter
- RCA video cable



Note: Place the VT42A Video Sender as far away from your computer and its monitor as its cord allows.

8

## SETTING UP

### WIRELESS A/V SYSTEM, CONT.

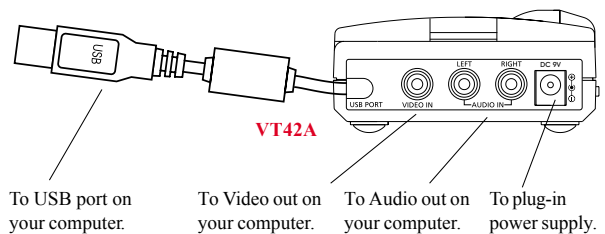
#### Setup

Connect one end of the yellow video cable into the TV Out port on your computer's video card. If your computer has an S-Video Out, connect the S-Video cable to the video card, plug the other end into the S-Video to RCA converter, and then plug the yellow RCA video cable into the converter. Plug the other end of the video cable into the USB Video Sender.

Unplug your speakers from your computer's sound card. Plug the mini-stereo jack splitter into the audio out (sometimes labeled "Line Out") jack on the sound card that your speakers were plugged into. Plug the speakers into one side of the splitter. Plug the mini-stereo to RCA cable into the other side of the splitter. Plug the red and white ends of the cable into the USB Video Sender's "Audio In" jacks.

Plug the power supply into a power outlet and connect the other end to the "DC 9V" plug on the Video Sender. Switch the Video Sender on and flip up the antenna. Point the side of the antenna with four squares on it in the direction where you'll set up the Video Receiver.

You should have already plugged the VT42A Video Sender's USB plug into your computer's USB port when you installed the software (page 4).



Go to page 13 to set up the Receiver.

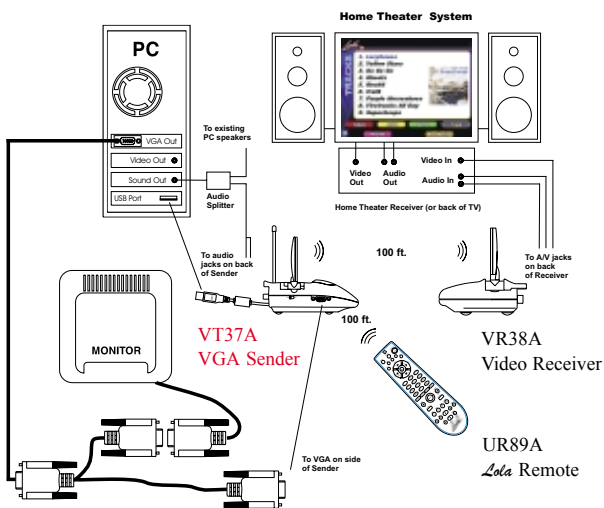
9

## SETTING UP

### WIRELESS VGA SYSTEM

#### Parts

- VT37A VGA Sender
- Power supply for VGA Sender
- Power supply for Video Receiver
- Stereo jack to RCA Audio cable
- VGA splitter cable
- VR38A Video Receiver
- *Lola* Remote Control
- RCA A/V cable
- Stereo jack splitter



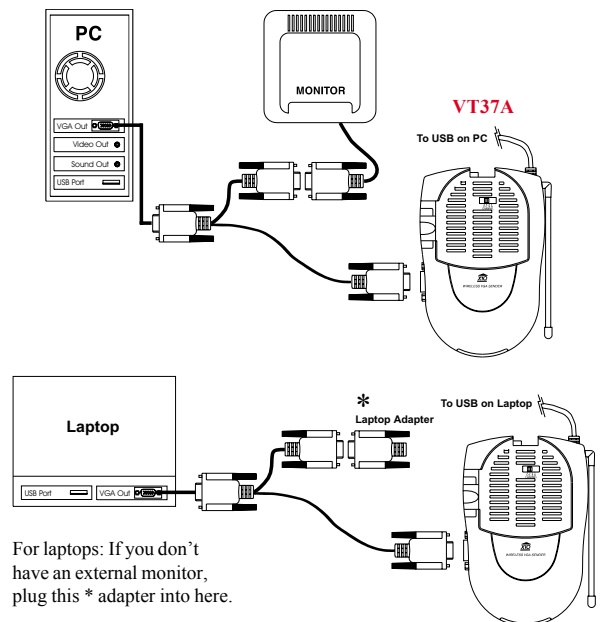
Note: Place the VT37A VGA Video Sender as far away from your computer and its monitor as its cord allows.

## SETTING UP

### WIRELESS VGA SYSTEM, CONT.

#### Setup

Start by shutting down your computer and unplugging your monitor from your computer's video card. Plug VGA splitter cable into your video card. Plug your monitor into one end of the splitter cable, and plug the other end into the VGA Video Sender.



For laptops: If you don't have an external monitor, plug this \* adapter into here.

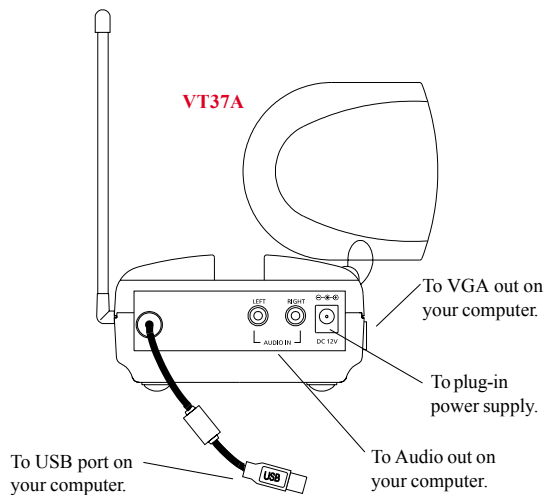
## SETTING UP

### WIRELESS VGA SYSTEM, CONT.

Next, unplug your speakers from your computer's sound card. Plug the mini-stereo jack splitter into the audio out (sometimes labeled "Line Out") jack on the sound card that your speakers were plugged into. Plug the speakers into one side of the splitter. Plug the mini-stereo to RCA cable into the other side of the splitter. Plug the red and white ends of the cable into the VGA Video Sender's "Audio In" jacks.

Plug the power supply into a power outlet and connect the other end to the "DC 12V" plug on the VGA Video Sender. Switch the VGA Sender on and flip up the antenna. Point the side of the antenna with four squares on it in the direction where you'll set up the Video Receiver.

You should have already plugged the VT37A Video Sender's USB plug into your computer's USB port when you installed the software (page 4).

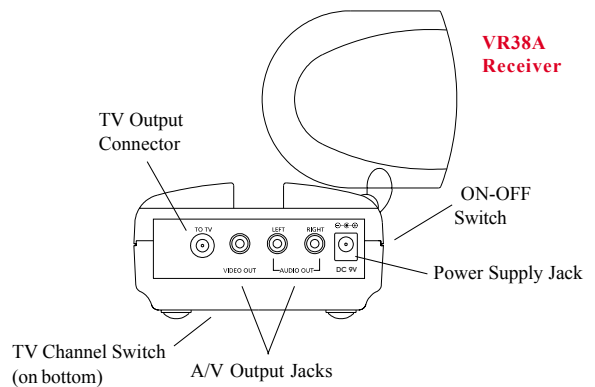


12

## SETTING UP

### CONNECTING THE RECEIVER

After you've set up your Audio/Video Sender, you need to connect the Receiver to your TV or Home Theater System.

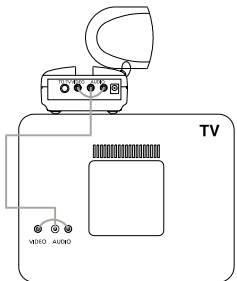


Connect a set of Audio/Video cables to the A/V OUT jacks on the A/V Receiver. Connect the other end to your TV or Home Theater.

Plug the Audio/Video Receiver's Power Supply into a regular wall outlet and plug its jack into the Audio/Video Receiver.

Turn power switch on (on side of unit).

Position the Audio/Video Receiver in a convenient location such as on top of the TV and orient the antenna so that the flat side points in the direction of the room where you set up the Audio/Video Sender.



13

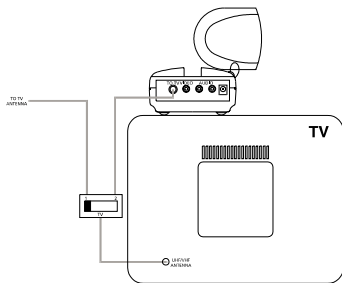
## SETTING UP

### CONNECTING THE RECEIVER, CONT.

#### IF YOUR TV DOES NOT HAVE A/V CONNECTORS

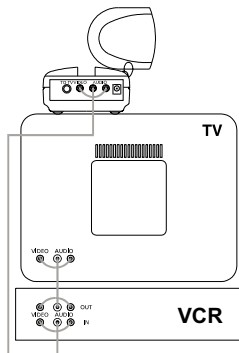
You can use a COAX cable to connect the TV OUT socket on the Audio/Video Receiver to the Antenna input on your TV. If you already have an antenna connected to your TV, you will need to use a TV antenna splitter.

Set your TV and the TV Channel switch on the Audio/Video Receiver (on bottom) to the same channel (3 or 4).



#### IF YOUR TV IS ALREADY HOOKED UP TO A VCR OR OTHER A/V DEVICE

If a VCR or other A/V component is connected to your TV using Audio/Video cables, you can connect the Audio/Video Receiver to the free Video In jacks on the component. If there are no Video In jacks, you will need to use an A/V Selector or Video Selector.



14

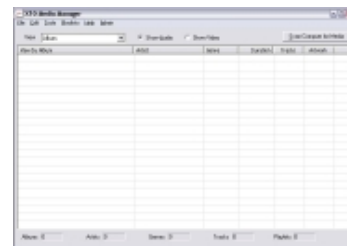
## USING LOLA

### IMPORTANT

Before using *Lola* you must run Media Manager to scan your computer for music files and import them into *Lola*.

### THE MEDIA MANAGER

In order to play your music in *Lola*, it has to know what songs you have on your computer. Use the Media Manager to do this. The Media Manager opens the first time you run *Lola*, but you can also access it from the Start Menu.



When you first open the *Lola* Media Manager, your library will be empty. To add music to your library, click the "Scan Computer for Media" button in the main window.



In the Scan window you choose the locations you want to search for music to add to your library. Unless you choose another location, the Media Search will look on your whole hard drive for music. You can change the locations to look in with the "Look for Media" menu, and by browsing in different folders.

15

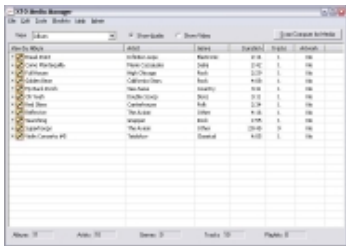


## USING *Lola*

### THE MEDIA MANAGER, CONT.

If you only want to include certain types of files, change the setting in the “File Types to Search For” menu. Use the “Exclude Files Smaller Than” option to tell Media Player to ignore smaller files (like Windows system and program sounds).

When you’ve selected all the options you want to change, click “Start Search” to begin. You can watch Media Search’s progress in the status box. When the scan is done, it will display a list of the songs that were added to your Library.



Close the Scan window to return to the media library. The music you just added will be listed in the library. You’re now ready to close the Media Library and start *Lola*.

Refer to *Lola*’s help for more information. To do this click on the *Lola* tray icon at the bottom right of your computer screen.

## USING *Lola*

### THE *Lola* PLAYER

Use the *Lola* shortcut on your desktop or the shortcut in the Start Menu to run *Lola*. You control all of *Lola*’s features with the *Lola* remote control. Press the PC button on the remote to get started. *Lola* starts up in the Playlist View, seen below.



### MOVING AROUND THE SCREEN

Most of the things you do will use the remote’s mini-joystick. Push the joystick in the direction of the item or feature on screen you want to select. Press down on the joystick to select the highlighted item; this is also called pressing **Enter**.



## USING *Lola*

### CHANGING MUSIC VIEWS

#### View Buttons



Use the colored View buttons to jump directly to a particular list view.

- **Album** lists all of the album titles in your collection.
- **Artist** lists all of the artists in your music collection.
- **Genre** lists your music by styles (Rock, Country, Jazz, etc.).
- **Track** displays the currently playing track list, or if you have an Album, Artist, Genre or Playlist item highlighted it opens and displays all the tracks that item has.
- **Playlist** shows you the list of Playlists that you have made.
- **Playing** displays the currently playing song in detail view.

When you are in a list view, you can use the joystick up and down directions to browse through the list. Use **Page Up** and **Page Down** to move a whole screen at a time.



Press **Top** to move highlight the first item in the list on screen; Press **End** to highlight the last. Press **Top** twice to go to the very first item in your selected view. Press **End** twice to go to the last thing in the entire list.



18

## USING *Lola*

### Video Views

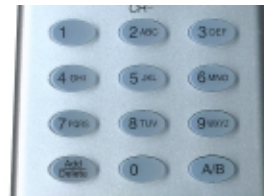
Once you are in a view screen, pressing its button again will show your video list for that view. For example, if you press **Album** while looking at the album list, *Lola* will switch to the Video Album view. Press **Album** again to go back to the music list.

### PLAYING MUSIC

To play music in *Lola*, find an Album, Artist, Genre, or Play List you want to play using the view mode buttons and the joystick. When the music you want to play is highlighted, select it by pressing down on the joystick, or by pressing **Play** on the remote. Your music will start playing. You can also select and play individual tracks from within the track list.

### Selecting Numbered Items

You don't always have to use the joystick to select an item. When you are looking at a list of items in *Lola*, you can enter the number of the one you want to choose using the number buttons.



### Controlling Song Playback

Use the familiar play control buttons when a song is playing to fast forward and rewind, change tracks and pause the current song.



19

## USING LOLA

Use the **Volume Up** and **Volume Down** buttons to adjust the loudness of the song that's playing. When you change the volume, a bar of dots will appear on screen to show you the current volume level. Note, you can also adjust the volume of your computer's sound output for your computer's volume control. You can also use the *Lola* remote to adjust the volume of your TV or Home Theater System.

### USING SEARCH TO FIND MUSIC QUICKLY

If you have lots of music in your library, you can use the **Find** button on the remote to quickly skip to the music you want to hear.



In the Album, Artist, or Genre views, press **Find** on the remote to open the search box at the top of the *Lola* Screen.



Use the number keys on the remote to enter a letter — next to the numbers are labels to tell you which buttons to press. For example, the first time you press 7, the letter P is selected. Pressing 7 two more times will select R and take you to the first Album, Artist, or Genre in the list that starts with R.

## USING LOLA

### NOW PLAYING

The Now Playing screen shows you detailed information about the songs you are playing. You can open it by pressing the orange **Playing** button.



In the Now Playing screen you can move the joystick up and down to see other songs in the currently playing list. When you are viewing a song other than the one that's playing, just press **Enter** on the remote to start playing the new song.

## USING *Lola*

### Play Modes

*Lola* has five play modes. You change the play mode with the Select button on the *Lola* remote.



Each press of the **Select** button changes you to the next mode:

### Repeat Off

In this mode, your songs are played in sequential order, and play stops at the end of the last song.

### Repeat Track

Repeats the currently playing track until you stop it.

### Repeat All

Repeats all the songs in the current list until you stop playing. When the last song in the list is reached, *Lola* starts again at the first song.

### Shuffle

Plays songs from your playlist at random, until you stop play or change modes.

### Preview

In this mode *Lola* will play the first 15 seconds of each song, and then go to the next song. The last song in the list will play through entirely. To get out of Preview mode, press **Select**, or **Stop**, or **Play**.

## USING THE REMOTE

### BUTTON DESCRIPTIONS

**Setup** Used to set up the remote to control your TV, Cable Box, or Audio System (see page 24):

**Learn** Learns TV/Audio/Cable codes not in the remote's library (see page 26):



**Power** Hides/Reopens *Lola*. Also operates your TV/Stereo.

**PC, TV, Audio, Cable** Changes the remote's control from *Lola*, to TV, to Audio, to Cable System, respectively.

**X10** Used for Home Control functions.

**0-9** Selects track numbers directly.

**Add/Delete** Marks a track to be added to a playlist, or excluded from play.

**A/B** Selects input mode on your TV (if your TV supports that feature).

**Album, Artist, Genre, Track** Selects how you want to display/select your music files.

**Up, Down, Left, Right Arrows** Moves around the current list displayed. Works like a joystick.

**Enter** Chooses the currently highlighted selection. (Like pressing joystick button).

**Page Up and Down** Moves up and down through screens.

**Playlist** Displays your play lists.

**Playing** Displays detailed information on the track that's playing.

**Top, End, Find, Select** Used to move around within, and organize your music files. **Top** and **End** go to the top and end of a list. **Find** lets you find albums/artists/tracks alphabetically. **Select** lets you change the way tracks are played (Regular, Repeat Track, Repeat All, Shuffle, or Preview). See page 22.

**Play, Stop, Pause, FF, REW, Scan+/-** Used like you would use on your CD player.

**Play** Also plays the currently highlighted selection. Also, with Add/Delete, used to exclude a track from play.

**Record** Saves the track exclusion for every time *Lola* is run.

**See the help in the *Lola* software for more information. To access the help, click on the *Lola* tray icon at the bottom right of your screen.**

## ADVANCED OPTIONS

### USING THE REMOTE TO CONTROL YOUR TV, CABLE BOX, OR AUDIO SYSTEM

The remote can be set up to control the volume, channel etc., on your TV, Cable Box, or audio system as follows.

1. Turn on the device you want to control (TV, Cable Box, or Audio system).
2. Press and release mode button for the device you want to control (TV, Cable, or Audio).
3. Press and hold SETUP until the green LED indicator under the button you pressed in step 2 lights steadily. Release SETUP.
4. Enter the 3 digit Code from the Library Code Table (on page 27). The LED turns off after the last digit entered.
5. Point the remote at the device and press the POWER button a few times. Your device should turn off and on.



If you can't control all the features of your TV, Cable Box, or Audio System from the *Lola* Remote try another code for your brand from the code list. Note however that it's possible that not all the features of your TV, Cable Box, or Audio System are supported by the *Lola* Remote.



## ADVANCED OPTIONS

### CODE SEARCH

If you can't find the code for your device in the Code List, you can search for it:

1. Turn on the device you want to control (TV, Cable, or Audio system).
2. Press and release mode button for the device you want to control (TV, Cable, or Audio).
3. Press and hold SETUP until the green LED indicator under the button you pressed in step 2 lights steadily. Release SETUP.
4. Press the CH+ (or Power) button on the remote repeatedly until your TV changes channel (or your Audio device turns off). If you overshoot you can press CH -.
5. When your device responds, press Mute to install the code.

### CODE IDENTIFICATION

To identify what code is stored in the remote:

1. Press and release mode button for the device you want to control (TV, Cable, or Audio).
2. Press and hold SETUP until the green LED indicator under the button you pressed in step 2 lights steadily. Release SETUP.
3. Press SETUP again.
4. Press each digit number in turn. When the indicator blinks off, the button you pressed when it blinked is the first digit of the code set in the remote.
5. Repeat step 4 twice to find the second and third digits.

## ADVANCED OPTIONS

### LEARNING CODES

If you can't find the code for your TV, Cable or audio system in the code library, you can learn the commands you need from your existing remote. Note, you can only learn codes under Power, VOL +/-, CH+/-, and Mute buttons.

1. Point your existing remote at the *Lola* Remote on a hard surface with a distance of about 1 inch between remotes.



2. Press the mode button that matches the equipment you want to learn (TV, Cable, or Audio). The LED blinks once.
3. Press and hold SETUP until the green LED indicator under the button you pressed in step 2 lights steadily. Release SETUP.
4. Press and release the LEARN button. The LED blinks once.
5. Press and release the button on the *Lola* Remote that you want to teach. (e.g. POWER) The LED blinks once.
6. Press the matching button on your existing remote that you want to learn. Hold the button until the LED on the *Lola* Remote blinks off.
7. Repeat steps 5 and 6 for each button you want to learn.
8. When you've finished learning all the keys, press SETUP.

## ADVANCED OPTIONS

### CODE LIST

#### TV

ABEX .....	185
ACME .....	003 031
ADA .....	009
ADC .....	009 002
ADMIRAL .....	001 173
ADVENTURA .....	174
AIKO .....	058
AIWA .....	195 196
ALLERON .....	046
AMARK .....	020
AMTRON .....	053
AKAI .....	002
AMSTRAD .....	189
ANAM NATIONAL .....	003 025 042 053 193
AOC .....	004 005 007 009 014 132 156 175
ARCHER .....	020
AUDIOVOX .....	053
BANG & OLUFSEN .....	190
BELCOR .....	004
BELL & HOWELL .....	000 001 049
BRADFORD .....	053
BROKSONIC .....	136 147
BROKWOOD .....	004
CANDLE .....	004 008 009 174
CAPEHART .....	175
CELEBRITY .....	002
CENTURION .....	009
CETRIONIC .....	042
CHANGHONG .....	214
CITIZEN .....	001 004 008 009 042
.....	053 058 105 109 177
CLAIRTONE .....	014
CLASSIC .....	042 214
COLORTYME .....	004 009 010
CONCERTO .....	004 009
CONCIERGE .....	121
CONTEC/CONY .....	012 013 014 042 053
CRAIG .....	042 053
CROWN .....	042 053
CURTIS MATHES .....	000 001 004 009 015
.....	031 049 105 109 130
CXC .....	042 053
DAEWOO .....	004 005 009 017 018 019 042
.....	058 082 085 097 100 126 127 130 138
DAYTRON .....	004 009
DIMENSIA .....	000 031
DUMONT .....	004 121
DYNASTY .....	042
ELEKTRA .....	001
ELECTROBAND .....	002 014

ELECTROHOME .....	003 004 009 022 133
EMERSON .....	004 009 014 023 024 025
.....	026 027 030 032 033 034 035 036 037
.....	038 039 040 041 042 043 045 046 049
.....	053 116 135 147 155 177 179 189 198
ENVISION .....	004 009
FISHER .....	013 049 050 180 209
FUJITSU .....	046 197
FUNAI .....	042 053 046 155 189 198
FUTURETEC .....	042 053
GE .....	000 003 004 009 022 031 044 052
.....	054 055 087 092 103 107 125 164 181
GIBRALTER .....	004 121
GOLDSTAR .....	004 005 009 056
.....	057 133 155 156 172
GRUNDY .....	046 053
HALLMARK .....	004 009
HARVARD .....	053
HITACHI .....	001 004 009 013 059 060
.....	061 088 091 137 139 140 141
.....	142 143 144 145 146 179 210
IMA .....	053
INFINITY .....	062
INTEQ .....	121
JANEIL .....	174
JBL .....	062
JCB .....	002
JC PENNY .....	000 004 005 008 009
.....	022 031 052 054 055 063
.....	087 105 107 109 172 181
JENSEN .....	004 009
JVC .....	013 054 055 060 065 067 089
KAWASHO .....	002 004 009
KAYPANI .....	175
KEC .....	042
KENWOOD .....	004 009 133
KLOSS NOVABEAM .....	068 069 174
KONKA .....	016 047 066 157 158 176
KTV .....	014 021 042 053 070 116 177
LODGENET .....	000 001
LOEWE .....	062 211
LOGIK .....	000 001
LUXMAN .....	004 009
LXI .....	000 004 009 031
.....	049 062 107 109 181
MAGNAVOX .....	004 008 009 062 068 069
.....	074 075 076 077 089 133 163 165
MAJESTIC .....	000 001
MARANTZ .....	004 009 062
MEGATRON .....	004 009 059
MEI .....	014
MEMOREX .....	000 001 004 009
.....	046 049 051 135
MGA .....	004 005 009 022 046 133 180
MIDLAND .....	054 055 107 121 172 181

MINUTZ ..... 052  
 MITSUBISHI ..... 004 005 009 022 046  
 ..... 081 089 132 133 180  
 MONTGOMERY WARD ..... 000 001  
 MOTOROLA ..... 003 173  
 MTC ..... 004 005 009 014 105 109  
 MULTITECH ..... 053  
 MULTIVISION ..... 084  
 NAD ..... 004 009 109 185  
 NEC ..... 003 004 005 009 010 085 089 095  
 NIKEL ..... 042  
 NIKKO ..... 004 009 058  
 NTC ..... 058  
 ONKING ..... 042  
 ONWA ..... 042 053  
 OPTIMUS ..... 170 185  
 OPTONICA ..... 095 173  
 ORION ..... 035 121 135  
 PANASONIC ..... 003 054 055 062  
 ..... 070 148 170 171  
 PHILCO ..... 003 004 005 008 009 062  
 ..... 068 069 074 075 077 133  
 PHILIPS ..... 003 004 006 008 062 068 069  
 ..... 074 075 076 086 087 089 133 163  
 ..... 183 184 205 206 207 208 212 213  
 PHILIPS/MAGNAVOX ..... 183 184  
 ..... 204 208 213  
 PILOT ..... 004  
 PIONEER ..... 004 009 090 179 185  
 PORTLAND ..... 004 005 009 058  
 PRECISION ..... 166  
 PRICE CLUB ..... 105  
 PRISM ..... 055  
 PROSCAN ..... 000 031 107 181  
 PROTON ..... 004 009 093 175 186 192  
 PULSAR ..... 121  
 PULSER ..... 004  
 QUASAR ..... 003 054 055 062  
 ..... 070 148 170 171  
 RADIO SHACK ..... 000 004 009 031 041 042  
 ..... 048 049 053 095 133 155 170 172 194  
 RCA ..... 000 003 004 005 007 009 011  
 ..... 048 078 082 092 094 096 098  
 ..... 099 101 102 103 107 113 125 129  
 ..... 133 167 179 181 187 188 191 194  
 REALISTIC ..... 000 004 009 031 041 042  
 ..... 048 049 053 095 133 155 170 172  
 RHAPSODY ..... 014  
 RUNCO ..... 121  
 SAMPO ..... 004 009 172 175  
 SAMSUNG ..... 004 005 009 015 104  
 ..... 105 106 109 133 172  
 SAMSUX ..... 009  
 SANSUI ..... 135 136  
 SANYO ..... 004 013 049 108 110 180 209

SCOTCH ..... 004 009  
 SCOTT ..... 004 009 024 035 042 046 053  
 SEARS ..... 000 004 009 013 031 046 049  
 ..... 105 107 109 110 133 180 181 189  
 SHARP ..... 004 009 079 095 111  
 ..... 112 114 122 123 124 173  
 SHOGUN ..... 004  
 SIGNATURE ..... 000 001 023  
 SIMPSON ..... 008  
 SONIC ..... 014  
 SONY ..... 002 006 071 128  
 SOUNDESIGN ..... 004 008 009 042 053 046  
 SPECTRAVISION ..... 203  
 SQUAREVIEW ..... 189  
 SSS ..... 004 042 053  
 STARLITE ..... 053  
 SUPREMACY ..... 174  
 SUPREMA ..... 002  
 SYLVANIA ..... 004 008 009 062 068  
 ..... 069 074 075 076 077  
 ..... 133 155 161 163 189 198  
 SYMPHONIC ..... 033 053 155 189 198  
 TANDY ..... 173  
 TATUNG ..... 003  
 TECHNICS ..... 054 055  
 TECHWOOD ..... 004 009 054 055  
 TEKNIKA ..... 000 001 004 005 008 009 013  
 ..... 042 046 053 058 076 105 109 170 174  
 TELECAPTION ..... 117  
 TELERENT ..... 000 001  
 TERA ..... 004 186  
 TMK ..... 004 009  
 TOSHIBA ..... 013 049 089 105 109  
 ..... 117 118 120 159 178  
 UNIVERSAL ..... 052 087  
 VICTOR ..... 060  
 VIDTECH ..... 004 005 009  
 VIKING ..... 174  
 WARDS ..... 000 001 004 005 009 024  
 ..... 031 033 046 052 062 068 069  
 ..... 074 075 076 087 095 119 133  
 WHITE WESTINGHOUSE ..... 097 100  
 ..... 130 155  
 YAMAHA ..... 004 005 009 133  
 ZENITH ..... 000 001 004 023 038  
 ..... 058 059 064 121 135 136 153

**Cable**

ABC ..... 461 462 463 464 465 466 467  
 ADELPHIA ..... 596  
 ALLEGRO ..... 524 525  
 AMERICAST ..... 527  
 ANTRONIX ..... 468 469  
 ARCHER ..... 468 469 470 471

AT&T ..... 511  
 CABLETENNA ..... 468  
 CABLEVIEW ..... 468  
 CENTURY ..... 471  
 CITIZEN ..... 471  
 COLOUR VOICE ..... 472 473  
 COMTRONICS ..... 474 475  
 CONTEC/CONY ..... 476  
 EASTERN ..... 477  
 GARRARD ..... 471  
 GC ELECTRONICS ..... 469  
 GEMINI ..... 478 479 536  
 GE ..... 549  
 GENERAL INSTRUMENT ..... 463 509  
 ..... 511 513 514 518 528 529 530 531  
 HAMLIN ..... 480 481 482  
 HITACHI ..... 463  
 HYTEK ..... 462  
 JASCO ..... 471  
 JERROLD ..... 461 463 464 465 467 478  
 ..... 484 509 510 511 526 528 529  
 MAGNAVOX ..... 485  
 MEMOREX ..... 486  
 MOVIE TIME ..... 462 487  
 NSC ..... 462 487  
 OAK ..... 462 476 489  
 PACE ..... 532  
 PANASONIC ..... 460 508  
 PARAGON ..... 486  
 PHILIPS ..... 471 472 473 479  
 ..... 485 490 491 492  
 PHILIPS/MAGNAVOX ..... 505 534  
 PIONEER ..... 493 494 498  
 PULSAR ..... 486  
 RADIO SHACK ..... 505 525 534  
 RCA ..... 460 507  
 REALISTIC ..... 469  
 REGAL ..... 482  
 REGENCY ..... 477  
 REMBRANDT ..... 463  
 RUNCO ..... 486  
 SAMSUNG ..... 474 494  
 SCIENTIFIC ATLANTA ..... 466 496 497  
 ..... 498 535 596 607  
 SIGNAL ..... 474 478  
 SIGNATURE ..... 463  
 SL MARX ..... 474  
 SPRUCER ..... 460  
 STANDARD COMPONENTS ..... 499  
 STARCOM ..... 461 467 478  
 STARGATE ..... 474 478  
 STAR SIGHT ..... 520  
 STAR SIGHT CABLE SERVICE ..... 507  
 STARQUEST ..... 478  
 STAR TRAK ..... 516  
 TANDY ..... 500

**Audio**

AIWA ..... 839 842 851 860  
 CARVER ..... 825  
 CITIZEN ..... 826  
 DENON ..... 803 817  
 FISHER ..... 814 821  
 GOLDSTAR ..... 766  
 HARMAN KARDON ..... 804 818  
 JVC ..... 790 813 819  
 KENWOOD ..... 683 808 816 828 832 869  
 MAGNAVOX ..... 796 814  
 MARANTZ ..... 688 824  
 MITSUBISHI ..... 877  
 NAD ..... 721 739 743  
 ONKYO ..... 805 811 812  
 OPTIMUS ..... 667 747 748 749  
 ..... 751 752 754 793  
 PANASONIC ..... 810 815  
 PHILIPS ..... 814 823 824 825  
 PIONEER ..... 837 866 867 878  
 RADIOSHACK ..... 706 754 793 806 865  
 ..... 866 867 868 875 878 879  
 RCA ..... 717 772 781 795 827 866  
 ..... 867 870 871 872 875 878 879  
 REALISTIC ..... 822  
 SANYO ..... 705  
 SCOTT ..... 768  
 SHARP ..... 671 684 809  
 SHERWOOD ..... 706 806 858 859  
 SONY ..... 778 785 797 798 799  
 ..... 833 834 835 836 843  
 TEAC ..... 710 807 855 856 857  
 TECHNICS ..... 791 810 815 823 863 864  
 VENTURER ..... 745  
 YAMAHA ..... 801 802 838 840  
 ..... 841 846 847 848 849  
 ZENITH ..... 676 730 749 759  
 ..... 765 766 784 814 850

## HOME CONTROL

*Lola* can do more for your music than freeing it from your computer! The X10 button on the *Lola* remote control puts you in control of the lights in your house just like it puts you in control of your music. When you listen to something relaxing, why not dim the lights, too? If it's time for a little wake-up music, how about hitting a button to make coffee? From simply turning on a lamp, to a full-blown automation system, X10 provides you with all the products you need.

With the right components in your X10 system, you can have all of these powerful options at your control:



- Make your lights match the music from anywhere in the house
- Give your home a secure appearance by scheduling when lights and other electronics turn on and off
- Turn on house lights while sitting in your car
- Schedule sprinkler systems
- Control your lights and electronic devices using your personal computer

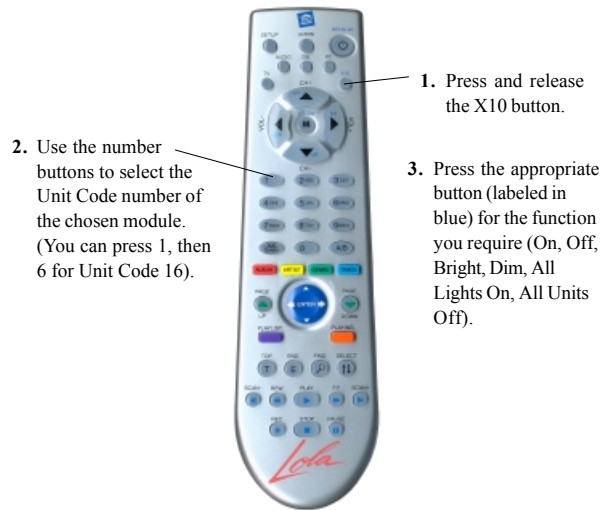
X10's control and automation products are easy to install and extremely affordable. Visit [X10.com](http://X10.com) today for more information and the latest products to build and enhance your X10 system.



## HOME CONTROL

### CONTROLLING X10 MODULES

Here's how to control X10 modules with your *Lola* Remote Control. The remote is set to House Code A by default. See the next page to change it.





### CHANGING THE HOUSE CODE FOR THE REMOTE

The *Lola* Remote comes set to House Code A by default. To change the House Code on the remote follow steps 1 through 4 below:

1. Press and release the X10 button (indicator flashes).
2. Press and hold Setup until the indicator lights steadily. Release the Setup button.
3. Use the number buttons to enter the number equivalent to the chosen Housecode (1=A, 2=B...16=P). Press 1 then 6 for 16, etc.
4. Press the Mute button to confirm the Housecode. The indicator blinks then goes off.



32

### CHANGING THE MASTER CODE FOR THE REMOTE

You can use up to 16 remotes within 100 ft. of each other without interfering with each other by setting each remote to a different Master Code. To do this, press and release PC. Then press and hold Setup until the indicator starts to blink. Release Setup (the indicator blinks a number corresponding to its Master Code (1-16) and then stays on). While the indicator is on, enter a new number for this remote (1-16) and then press setup. The indicator blinks back the new setting and then stays off. Repeat this process for each remote, setting a unique number (1-16) for each remote.

1. Press and release the PC button.
2. Press and hold Setup until the indicator starts to blink. Release Setup (the indicator blinks a number corresponding to its Master Code (1-16) and then stays on).
3. While the indicator is on, enter a new number for this remote (1-16) and then press Setup. The indicator blinks back the new setting and then stays off.



33

## TROUBLESHOOTING

### If the remote control doesn't control *Lola*:

- Press the PC button on the *Lola* Remote.
- Check the USB cable on the Transceiver is connected to your computer.
- Make sure the tray icon is present in the Windows task bar. If it isn't run *Lola* from the Windows Start button, or desktop shortcut.
- Press the Power button on the remote to launch *Lola*.
- Replace the Remote's batteries (4 x AAA alkaline).

### If the range for the *Lola* remote control is poor:

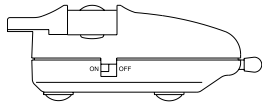
- Try locating the Transceiver away from the computer and the monitor.

### If there is no sound:

- Check the volume in *Lola*, the master volume on your computer, and the volume on your TV or Home Theater System. If any of them are muted or turned down too low you won't hear anything.
- Check the connections between your computer's sound card and your speakers, or between your computer's sound card and the Audio/Video Sender (for Wireless versions of the system).

### If there's no picture (or sound) on your TV (Remote versions):

1. Make sure your Audio/Video Receiver is connected to power and turned On.



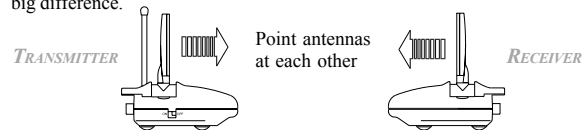
2. Select the appropriate video input on your TV. Usually you can select the input mode by pressing the VIDEO or INPUT button on the TV's remote control. Or you might have to change the TV to Channel 0 or 2, and then use Channel Down to change video inputs. See your TV's owner's manual if you still aren't sure how to change the video source.
3. Make sure your Video Sender is connected to power and turned on.
4. Follow the setup instructions again and check that you have done each step correctly.
5. Make sure that the ABCD switches on the top of the Audio/Video Sender and the bottom of the Audio/Video Receiver are set to the same letter. (See pictures on next page).

34

## TROUBLESHOOTING

### If the picture (or sound) on your TV isn't clear (Wireless versions):

First, adjust the antennas on the Audio/Video Sender and Receiver so that they point towards each other. The sides of the antennas marked with four squares should face each other. You can also try moving the Receiver itself to another location near the TV. Sometimes moving it just a foot can make a big difference.

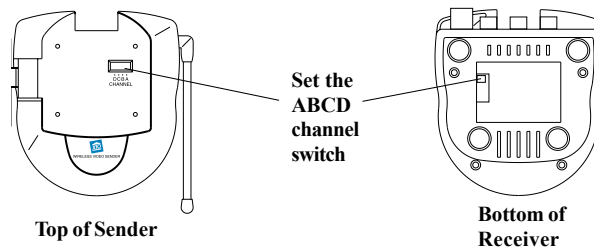


If the picture/sound still doesn't improve after adjusting the antennas and Receiver position, try changing the channels on the Audio/Video Sender and Receiver. The channel switch is on the top on the Sender (under the flip-up antenna) and on the bottom on the Receiver. Change the setting on both the Sender and Receiver, making sure they are set to the same letter (A, B, C, or D). Try different letter settings to see if the picture/sound improves.

You may still have trouble getting a clear picture if there is something in the area using the same frequencies as the *Lola* system. The following things can interfere with the transmission: 2.4 GHz cordless phones, wireless networks, baby monitors, and microwave ovens. If you have any of these, turn them off to see if the problem goes away.

If your picture has been fine and suddenly becomes distorted or fuzzy, look for new things in your house that might be causing interference.

For more help with setup please visit: <http://www.x10.com/support>



35



### FCC Caution

THIS DEVICE COMPLIES WITH PART 15 OF THE FCC RULES.

OPERATION IS SUBJECT TO THE FOLLOWING TWO CONDITIONS:

- (1) THIS DEVICE MAY NOT CAUSE HARMFUL INTERFERENCE, AND
- (2) THIS DEVICE MUST ACCEPT ANY INTERFERENCE RECEIVED, INCLUDING INTERFERENCE THAT MAY CAUSE UNDESIRE OPERATION.

This equipment generates and uses radio frequency energy, and if not installed and used properly, that is, in strict accordance with the manufacturers instructions, it may cause interference to radio and television reception. It has been type tested and found to comply with the limits for remote control devices in accordance with the specifications in Sub-Parts B and C of Part 15 of FCC Rules, which are designed to provide reasonable protection against such interference in a residential installation. However, there is no guarantee that interference will not occur in a particular installation. If this equipment does cause interference to radio or television reception, which can be determined by unplugging the equipment, try to correct the interference by one or more of the following measures.

- Reorient the antenna of the radio/TV experiencing the interference.
- Relocate the equipment with respect to the radio/TV.
- Move the equipment away from the radio/TV.
- Plug the equipment into an outlet on a different electrical circuit from the radio/TV experiencing the interference.
- If necessary, consult your local dealer for additional suggestions.

**NOTE:** Modifications to this product will void the user's authority to operate this equipment.

### X10 Wireless Technology, Inc. Limited One Year Warranty

X10.com, a division of X10 Wireless Technology, Inc. (X10) warrants X10 products to be free from defective material and workmanship for a period of one (1) year from the original date of purchase at retail. X10 agrees to repair or replace, at its sole discretion, a defective X10 product if returned to X10 within the warranty period and with proof of purchase. If service is required under this warranty:

Call 1-800-442-5065, visit [www.x10.com](http://www.x10.com), or e-mail [support@x10.com](mailto:support@x10.com).

**For help or more information on setup, please visit:**  
**<http://www.x10.com/support>**

**X10.com, a division of X10 Wireless Technology, Inc.**  
**3824 North 5th St., Suite C,**  
**North Las Vegas, NV 89032**

Lola-OM-3/03