



PACIFIC RESTYLING™
OEM & AFTERMARKET AUTOMOTIVE PARTS

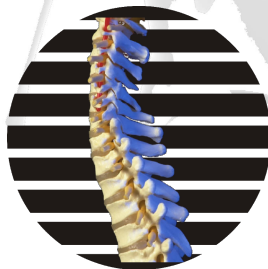
*Universal
Aftermarket
Lumbar Support
Systems*

Installation Guide

- Parts Descriptions•
- Assembly Diagram•
- Warranty•

Model L (L315-0682)

2-Way Power Mechanical Lumbar Support



SCHUKRA®
MANUFACTURING INC.
310 CARLINGVIEW DRIVE
ONTARIO, CANADA M9W 5G1
ALL RIGHTS RESERVED ©

1330 William Street, Vancouver British Columbia CANADA V5L 2P5
Toll Free 888-821-1066 Ext 103 or Fax 604-216-1196

Lumbar Support Systems and OCS sensors

If your vehicle is equipped with airbags, **most** vehicle manufacturers place front passenger side seat airbag sensors in one of three places:

- on the rails of the seat itself
- on the foam of the seat cushion
- a bladder-type device located between the seat cushion foam and the seat frame.

The lumbar device does not interfere with an air bag sensor in these locations.

However, there are some manufacturers (e.g. some HONDA models) which use an airbag sensor located on the surface of the seatback foam. In a case such as this, it is **NOT RECOMMENDED** to install the lumbar support system on the seat.

The lumbar system is not to interfere with the sensor in any way!

****Before installing the Universal Aftermarket Lumbar Support System on your vehicle's front passenger side seat, check with your vehicle's manufacturer about the location and type of OCS sensor so as not to interfere with the airbag safety feature in your vehicle****

Model L

INSTALLATION GUIDE - PARTS - ASSEMBLY DIAGRAM

2-WAY POWER MECHANICAL LUMBAR SUPPORT L315-0682

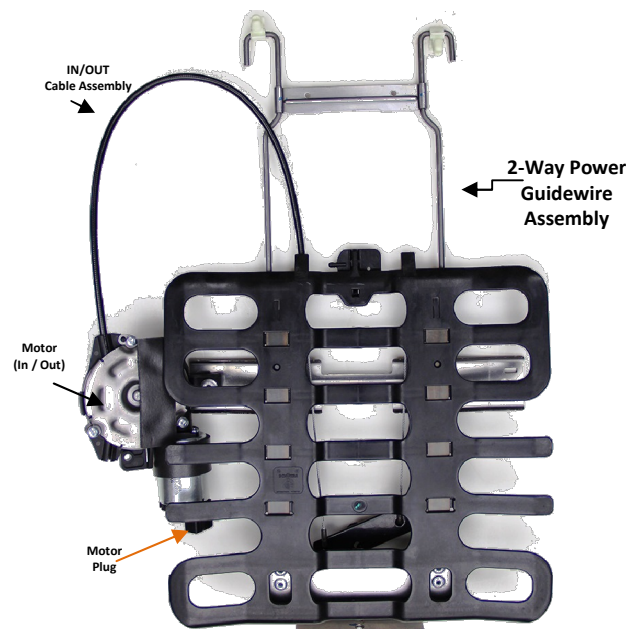
***BEFORE INSTALLATION CAREFULLY READ THE INSTRUCTIONS**
AUTOMOTIVE ELECTRICAL EXPERIENCE IS RECOMMENDED FOR THIS INSTALLATION.
PLEASE REFER TO MODEL L ASSEMBLY DRAWING

1. Check Parts Diagram for list of all parts needed for installation.
2. Remove seat from the vehicle and remove covers from the cushion and back.
3. Remove large seat foam from backrest. Measure approximately 16" from top of seat cushion or have the customer sit on the seat to locate the most appropriate mounting height location.
4. Hollow out foam for lumbar support ribs and motors to a depth of approximately 1/4" - 1/2" or as needed. This will allow the backrest to lay flat.
5. Attach top cross member of lumbar body to seat frame approximately 14 1/2" from top of seat cushion.
6. You may also secure the lumbar by means of heavy gauge cable-ties. Drill self-tapping screws into the backrest frame and suspend the cable ties from them. Secure the bottom corners of the lumbar unit to the backrest frame (cable ties are useful here as well if you choose).
7. Fitting the lumbar basket may be better achieved by having the actual end user of the equipment present during this phase of the install to ensure its placement is matched to user's own physique –not everyone has the same size torso! ☺
8. Position the lumbar in an upright orientation by ensuring the guidewire hooks are at the top. Attach guidewire assembly onto a cross member. ****A piece of material (fabric isolator) may be placed between universal mounting plate and cross members to prevent any rattling if necessary.**
9. Attach guidewire assembly to existing bottom cross member (or add a bar if necessary). *****Screws, cable ties and other fasteners are suggested.**
10. If choosing to use a fabric isolator, use glue to adhere the fabric isolator sheet to foam. The fabric isolator is typically a durable and flexible plastic sheet or other material highly durable to rub friction which acts to shield the foam from wear due to the up and down movement of the support. However, as the mechanism is mounted on a guidewire assembly, the amount of wear expected is inconsequential.
11. At this point, decide on a place to install your switch. Typically, the most convenient locations are alongside of seat frame or center console if applicable. Each installation is different. Use your own good judgment to locate the most likely location for the switch.
12. Proceed to Power Harness Installation (Pages 4 & 5)
13. Test lumbar to ensure unit is working properly.
14. Refit covers

POWER HARNESS X 1



BASKET ASSEMBLY X 1



*****Screws, cable ties or other fasteners not included**

Power Harness Installation

Part# LN2WP-HNS

For Use with Model L and Model N Lumbar

Follow the installation procedure on page 3 up to Step 9

>> Black Round Reversing Momentary Rocker Switch <<

- * Operates in the same manner as your typical power window switch.
- * ~25 cm switch pigtail: Mounts into a 23 mm (13/16") Drill Hole

Switch Symbols:

- = Double line - indicates increase of lumbar adjustment
- Single line - indicates decrease of lumbar adjustment
- O Zero - indicates lumbar at rest (off position)



Use your own good judgment and experience to decide on the most likely location for your switch (switches).

Typically, the most convenient locations are alongside the seat frame, in the trim along the base of the seat, or, in the console.

Your choice is a function of:

- Logistics to fit of equipment around the interior infrastructure of the trim
- Accessibility for the user
- Personal preference.

The switch head is “keyed” to allow you to “lock” your switch into position in the mounting hole. Cut a small notch (“lock” notch) in the inner edge of your mounting hole once you’ve drilled it out. After inserting the switch, rotate the switch until the key “catches” in your notch.

Decide your switch’s final orientation before creating your lock notch.

Once you’ve installed your harness, return to Page 3, Step 11 to complete your installation

(Harness installation continued next page)

This harness consists of three sub-extensions extending from the central dual relay assembly.

Ensure the relays are solidly seated in their relay sockets before proceeding.

There is one switch & harness provided for each motor.

Model L Lumbar has ONE motor; Model N Lumbar has TWO motors.

DOUBLE CHECK ALL OF YOUR CONNECTION POINTS ARE SOLIDLY CONNECTED

It never hurts to double check things when it comes to electricity.

- **SWITCH Extension (3 wires)**

Detachable Switch w/ waterproof plug & socket connector

Wire Colors to switch = RED, WHITE and YELLOW

The switch extension is in two parts – the harness extension w/ socket connector & the detachable switch plug

- **MOTOR Extension (2 wires)**

WHITE wire with Red Butt Connector (Hotwire) & YELLOW wire

Connect the two wires on this extension to the motor plug included with your lumbar mechanism

Model L has only ONE motor (and 1 motor plug provided)

Model N has TWO motors (and 2 motor plugs provided)

CONNECTION is as follows:

The harness WHITE WIRE w/RED BUTT CONNECTOR >>> connect to the RED wire on the motor plug

The harness YELLOW WIRE w/stripped/tinned end >>> connect to the BLACK wire on the motor plug

- **POWER Extension – 2-Wires**

RED wire with Standard Size 10A Fuse/Fuse Holder & BLACK ground wire

Connect these wires to vehicle power

Open the fuse holder & check the fuse is solidly inserted in the holder

Check to verify it that the fuse is indeed a 10A (included)

FIRMLY re-close the fuse holder when your check is complete

QUESTIONS? Feel Free to Give Us a Call !



1330 William Street, Vancouver, British Columbia CANADA V5L 2P5

Part # L315-0682 Power 2-Way Lumbar Support (Schukra) Model L (2014 redesign)



1310 William Street, Vancouver, BC CANADA V5L 2P5
P: 604-216-1106 — F: 604-216-1106 — F: 604-216-1196

ELECTRICAL INFORMATION:

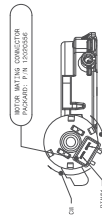
TO BE USED AS REFERENCE ONLY
SEAT BACK LOADED WITH 18.1kg LOAD (SMB B46)
IN HORIZONTAL POSITION
IN/OUT AT FULL-DOWN

12.5V CONTINUOUS (A)	IN RUSH (A)	STALL (A)
2.50	4.20	4.20

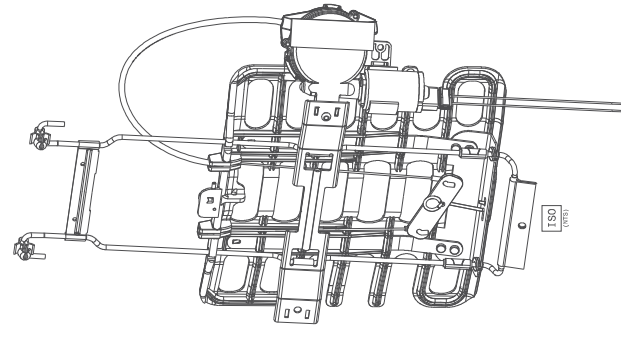
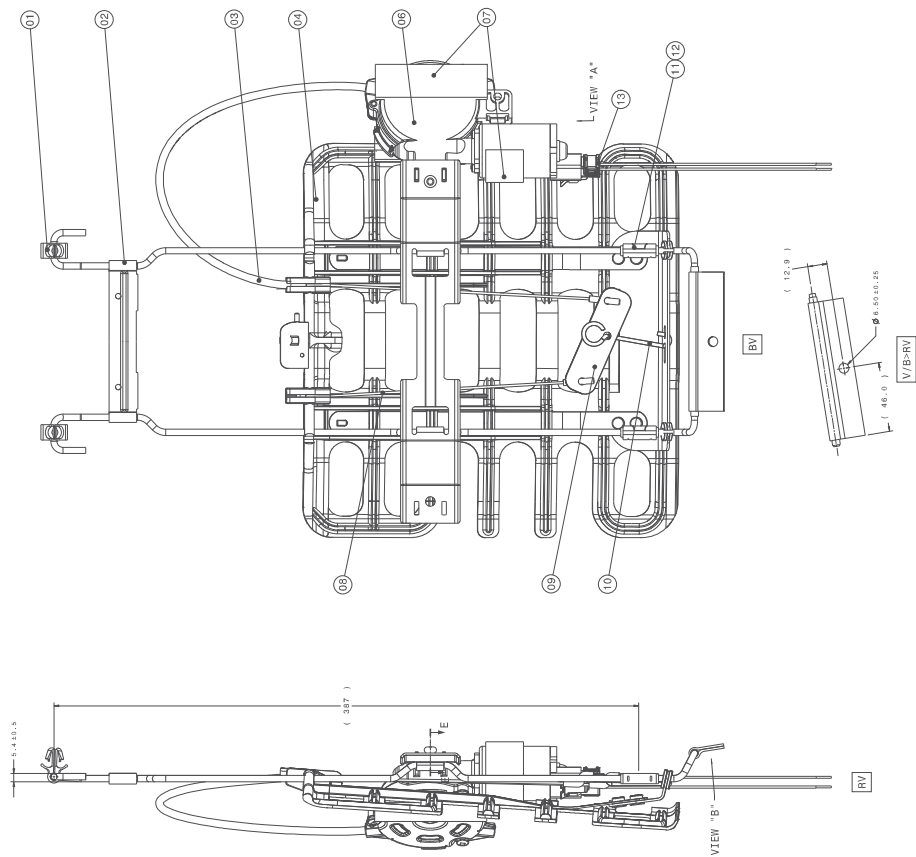
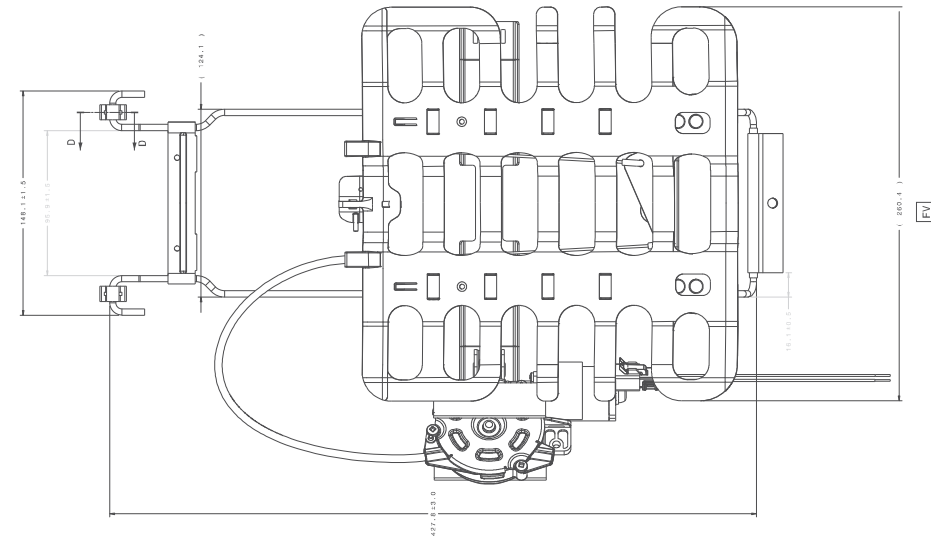
NOTES:

- MUST COMPLY WITH FM35502.
- SNIP POSITIONS: FULL IN WITH LUMBAR ACTUATORS RELEASED FROM STALL CONDITION. IT IS LRF'S RECOMMENDATION THAT THE LUMBAR ACTUATOR SHOULD NOT BE SHIPPED UNDER A STALLED CONDITION. FOR ANY SUBSEQUENT REPAIRS EVALUATION IS REQUIRED. RECOMMENDED SECOND PULSE AT 12.5V (MIN) AFTER THE EVALUATION IS COMPLETE.
- 3565mm IN-OUT TRAVEL
- FOR BURR AND FLASH, SEE GENERAL NOTES IN TITLE BLOCK
- LUMBAR DURABILITY PER LRP

12,000 DURABILITY CYCLES
A) 1,500 X AT -20°C (500 TIMES @ FULL TRAVEL MAX. PRESSURE)
B) 1,500 X AT 85°C (500 TIMES @ FULL TRAVEL MAX. PRESSURE)
C) 1,000 X AT 85°C (50% OF FULL TRAVEL, STALL TO 1/3 TRAVEL)
D) 1,000 X AT 85°C (50% OF FULL TRAVEL, STALL TO 2/3 TRAVEL)
E) 1,000 X AT 85°C (50% OF FULL TRAVEL, STALL TO 1/3 TRAVEL)
- SYSTEM MUST BE FUNCTIONAL WITH NO ABNORMAL NOISE/BSR. EXCESSIVE HEAT ON WIRING COMPONENTS SHOULD BE NOTED IN REPORT.
- LUMBAR JOUNCE IMPACT PER LRP
LUMBAR SUPPORT SET AT FULL FLAT FOR 100,000 CYCLES WITH 60.6 LB LOAD ON SEAT BACK.



FUNCTION	IN (V)	OUT (V)	IN (A)	OUT (A)
P1M1	+	-	0	0
P1M2	+	-	0	0
P1M3	+	-	0	0
P1M4	+	-	0	0
P1M5	+	-	0	0
P1M6	+	-	0	0
P1M7	+	-	0	0
P1M8	+	-	0	0
P1M9	+	-	0	0
P1M10	+	-	0	0
P1M11	+	-	0	0
P1M12	+	-	0	0
P1M13	+	-	0	0
P1M14	+	-	0	0
P1M15	+	-	0	0
P1M16	+	-	0	0
P1M17	+	-	0	0
P1M18	+	-	0	0
P1M19	+	-	0	0
P1M20	+	-	0	0
P1M21	+	-	0	0
P1M22	+	-	0	0
P1M23	+	-	0	0
P1M24	+	-	0	0
P1M25	+	-	0	0
P1M26	+	-	0	0
P1M27	+	-	0	0
P1M28	+	-	0	0
P1M29	+	-	0	0
P1M30	+	-	0	0
P1M31	+	-	0	0
P1M32	+	-	0	0
P1M33	+	-	0	0
P1M34	+	-	0	0
P1M35	+	-	0	0
P1M36	+	-	0	0
P1M37	+	-	0	0
P1M38	+	-	0	0
P1M39	+	-	0	0
P1M40	+	-	0	0
P1M41	+	-	0	0
P1M42	+	-	0	0
P1M43	+	-	0	0
P1M44	+	-	0	0
P1M45	+	-	0	0
P1M46	+	-	0	0
P1M47	+	-	0	0
P1M48	+	-	0	0
P1M49	+	-	0	0
P1M50	+	-	0	0
P1M51	+	-	0	0
P1M52	+	-	0	0
P1M53	+	-	0	0
P1M54	+	-	0	0
P1M55	+	-	0	0
P1M56	+	-	0	0
P1M57	+	-	0	0
P1M58	+	-	0	0
P1M59	+	-	0	0
P1M60	+	-	0	0
P1M61	+	-	0	0
P1M62	+	-	0	0
P1M63	+	-	0	0
P1M64	+	-	0	0
P1M65	+	-	0	0
P1M66	+	-	0	0
P1M67	+	-	0	0
P1M68	+	-	0	0
P1M69	+	-	0	0
P1M70	+	-	0	0
P1M71	+	-	0	0
P1M72	+	-	0	0
P1M73	+	-	0	0
P1M74	+	-	0	0
P1M75	+	-	0	0
P1M76	+	-	0	0
P1M77	+	-	0	0
P1M78	+	-	0	0
P1M79	+	-	0	0
P1M80	+	-	0	0
P1M81	+	-	0	0
P1M82	+	-	0	0
P1M83	+	-	0	0
P1M84	+	-	0	0
P1M85	+	-	0	0
P1M86	+	-	0	0
P1M87	+	-	0	0
P1M88	+	-	0	0
P1M89	+	-	0	0
P1M90	+	-	0	0
P1M91	+	-	0	0
P1M92	+	-	0	0
P1M93	+	-	0	0
P1M94	+	-	0	0
P1M95	+	-	0	0
P1M96	+	-	0	0
P1M97	+	-	0	0
P1M98	+	-	0	0
P1M99	+	-	0	0
P1M100	+	-	0	0





Warranty and Return Policy

Electric Lumbar Supports
Three (3) Year Warranty



Manual Lumbar Supports
Limited Lifetime Warranty

Pacific Restyling Products Ltd. warrants that we will replace the Universal Aftermarket Lumbar Support Systems mechanisms for up to three (3) years from the date of purchase.

This warranty is extended only to the original purchaser and does not cover collateral damage.

This warranty only covers failure due to defects in materials or workmanship which occur during normal use.

Any modifications done to the original unit renders this warranty VOID.

An authorized return may be made with a product in the same condition as when purchased for a 15% restock fee. All shipping charges must be paid by the purchaser and are not refundable.