

# ergotron<sup>®</sup>

*moving you forward*

## **TRACE™** **Monitor Mount**

- Intuitive adjustment: Effortlessly follows your next move
- Adaptable workstyle: Easily transitions between individual tasks and collaboration
- More workspace: Lifts screens off the desktop from a compact base
- Stay organized: Integrated cable management reduces clutter
- Flexible design: Quickly converts to a single or dual monitor configuration
- Ergonomic fit: Encourages regular movement to support healthy working



EMBRACE THE NEXT MOVE



In evolving work environments, the innovative TRACE Monitor Mount embraces movement to shape individual work experiences. It adapts to the ergonomic needs of each employee to create agile workspaces at home or in the office that effortlessly shift between users and tasks to encourage healthy movement, productivity and a collaborative spirit.

# TRACE™ Monitor Mount



Effortless adjustment with Constant Force™ Technology



Professional-grade quality testing for 15,000 cycles

## CLAMP KITS



SLIM PROFILE  
98-490-224 (MATTE BLACK)

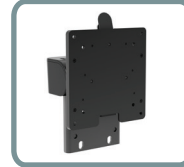


SLIM PROFILE  
98-490-216 (WHITE)

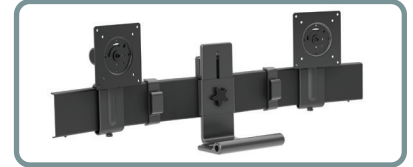


GROMMET  
98-492-009 (MATTE BLACK)

## CONVERSION KITS



SINGLE  
47-109-224 (MATTE BLACK)



DUAL  
47-110-224 (MATTE BLACK)



Single with Panel Clamp



Dual with Panel Clamp

Part # (color)	45-630-216 (white) 45-630-224 (matte black)	45-631-216 (white) 45-631-224 (matte black)
Includes	Single mount, counter-balanced monitor pivot, quick attach, 2-piece mounting clamp, mounting hardware and tools	Dual mount, bow, monitor pivots (2), 2-piece mounting clamp, mounting hardware and tools
Typical LCD Size	21.5–38"	21.5–27"
<small>LCD SIZE IS APPROXIMATION. DIMENSION IS DIAGONAL MEASUREMENT OF SCREEN. LCD SIZE MAY BE EXCEEDED AS LONG AS SCREEN WEIGHT DOES NOT EXCEED MAXIMUM WEIGHT CAPACITY OF THE MOUNT.</small>		
Weight Capacity	6.5–21.5 lbs (2.9–9.8 kg)	8.1–21.5 lbs (3.7–9.8 kg)
Lift	11" (28 cm)	
Tilt	80° ↑ 75° / ↓ 5°	
Pan	240°	
Rotation	360°	
VESA	MIS-D (75 x 75 mm, 100 x 100 mm)	
Extension	≤ 15" (38.1 cm)	
Product Weight	15.3 lbs (7 kg)	19.5 lbs (8.9 kg)
Shipping Weight	18.3 lbs (8.3 kg)	25.5 lbs (11.6 kg)
Shipping Dimensions	29.5" x 9.2" x 10.2" (75.1 x 23.4 x 26 cm)	35.1" x 12" x 10.2" (89.3 x 30.4 x 26 cm)
Warranty	15 years	

Download additional resources at [ergotron.com](http://ergotron.com).

For more information:

USA & Canada: 800.888.8458 / +1.651.681.7600 / [insidesales@ergotron.com](mailto:insidesales@ergotron.com)

EMEA: +31.33.45.45.600 / [info.eu@ergotron.com](mailto:info.eu@ergotron.com)

APAC: [apaccustomerservice@ergotron.com](mailto:apaccustomerservice@ergotron.com)

LATAM: +1.800.681.1820 / [info.latam@ergotron.com](mailto:info.latam@ergotron.com)

Custom: [custom@ergotron.com](mailto:custom@ergotron.com)

© Ergotron, Inc. 05.05.2023

Literature made in the USA

Content subject to change.

Ergotron devices are not intended to cure, treat, mitigate or prevent any disease.

Patent information available at [www.ergotron.com/patents](http://www.ergotron.com/patents).

