



# How to: Power Board Replacement

Sette 30, Sette 270, Sette 270W, Sette 270Wi

Time: 20 min

Difficulty: Medium

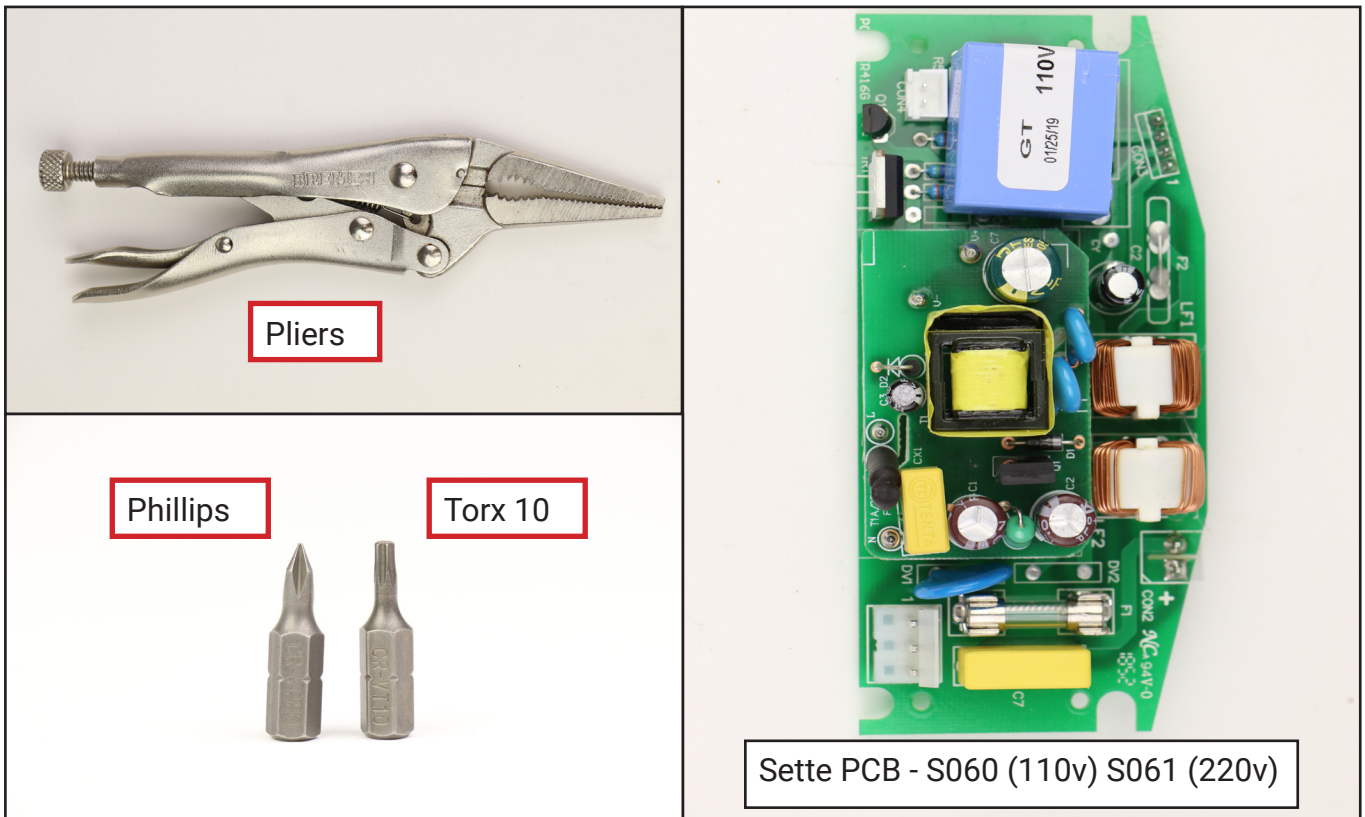
Tools/supplies: Torx 10 driver. Needle Nose Pliers. #0 Phillips driver.

Parts: Sette Powerboard (SKU: 110v - S060 / 220v - S061)

Additional Resources: Case Removal Guide

**\*\*\* Unplug the grinder from power supply \*\*\***

Remove the case using the Case Removal Guide





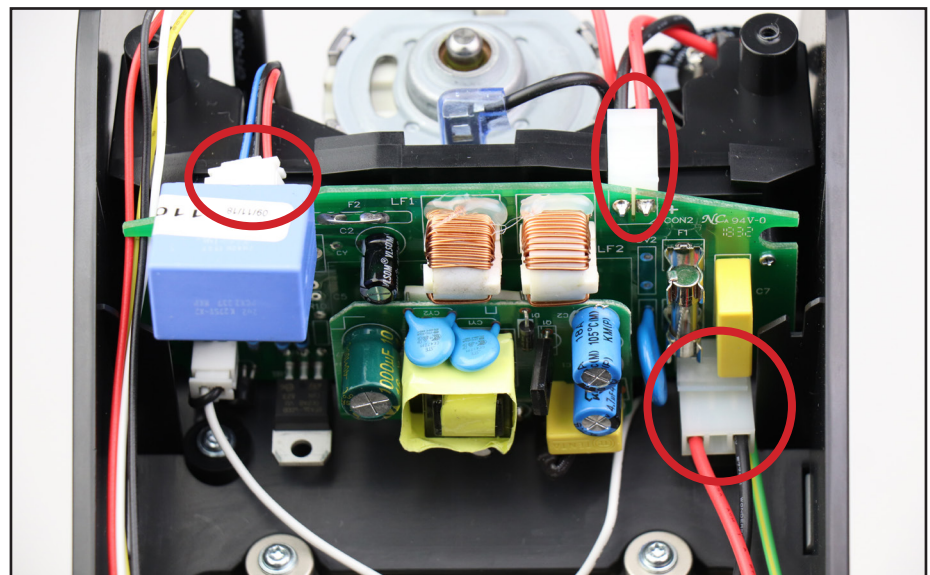
**ADVISORY**

**CAUTION:** The capacitor is normally discharged however it may retain a charge. Do not touch the exposed metal at the rear of the component.

**ADVISORY**

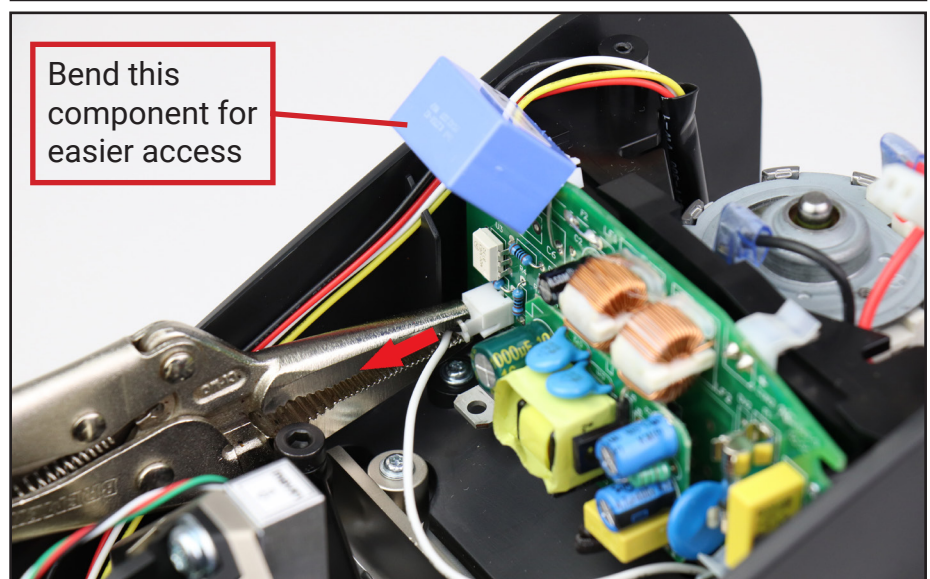


Unplug display, power cord and motor from circuit board



Use needle nose pliers to unplug the interlock switch connector.

Bend this component for easier access

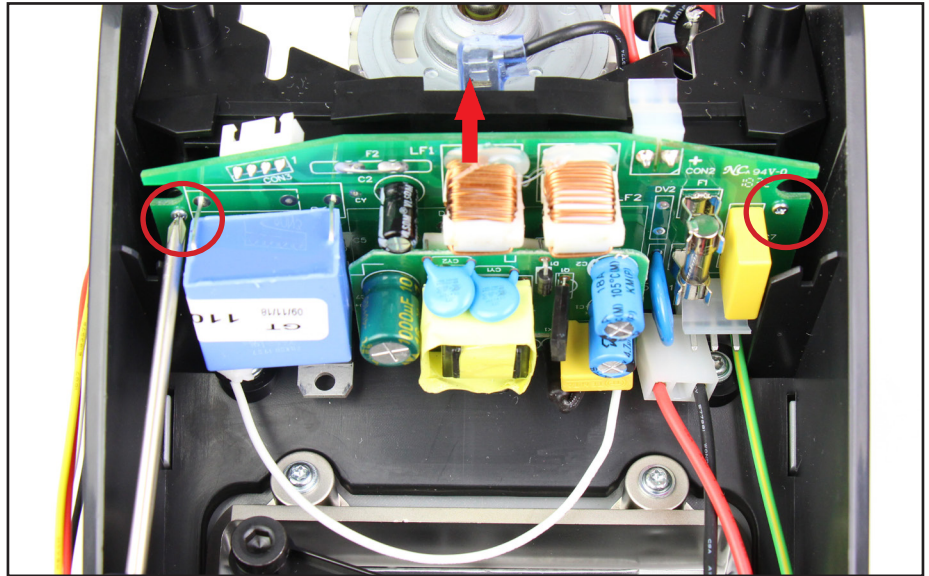




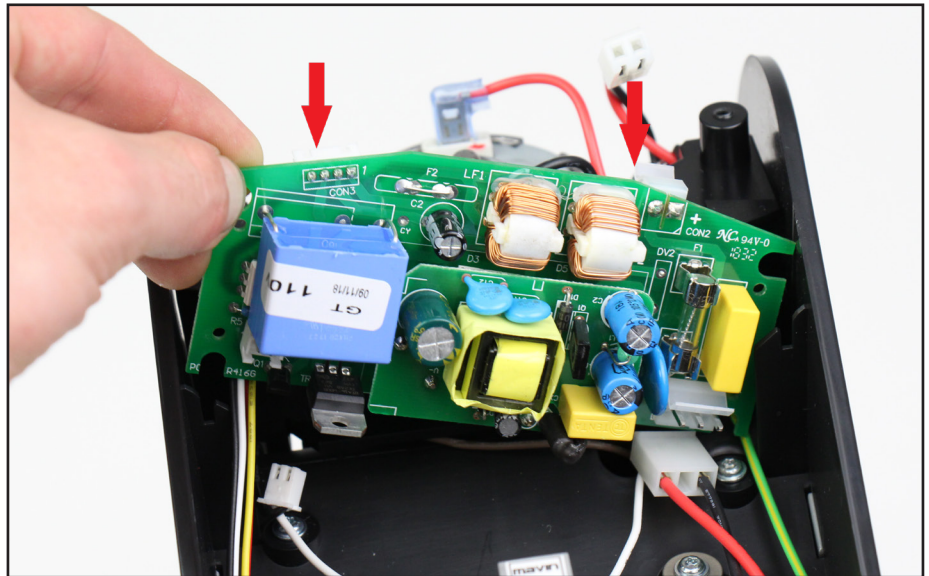


Remove the 2 screws to release the power board.

\*There may be two additional screws securing the board. If this is the case, refer to page 4 of this guide\*

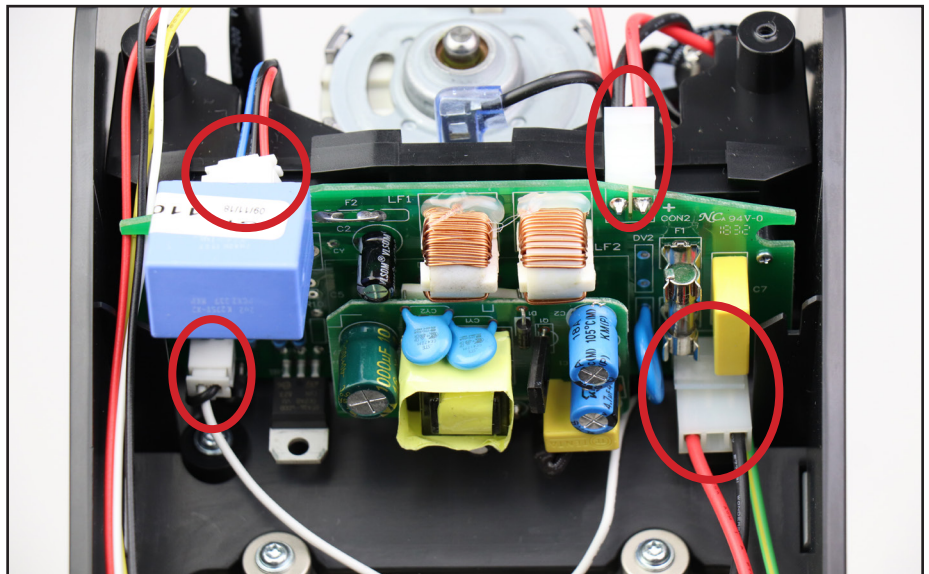


Install the new power board and secure the screws.



Plug in the display, power cord, motor and interlock switch connectors.

Reinstall the case and return the unit to operation.

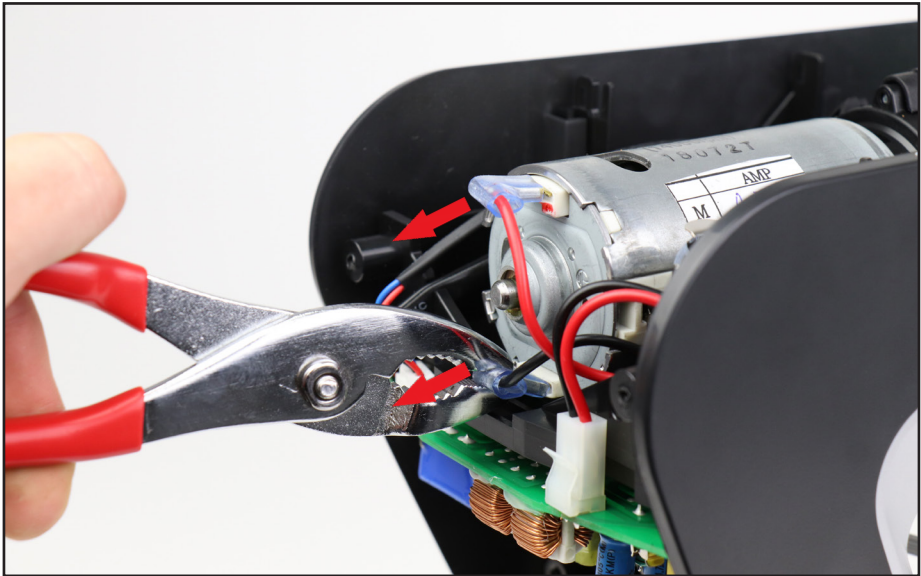




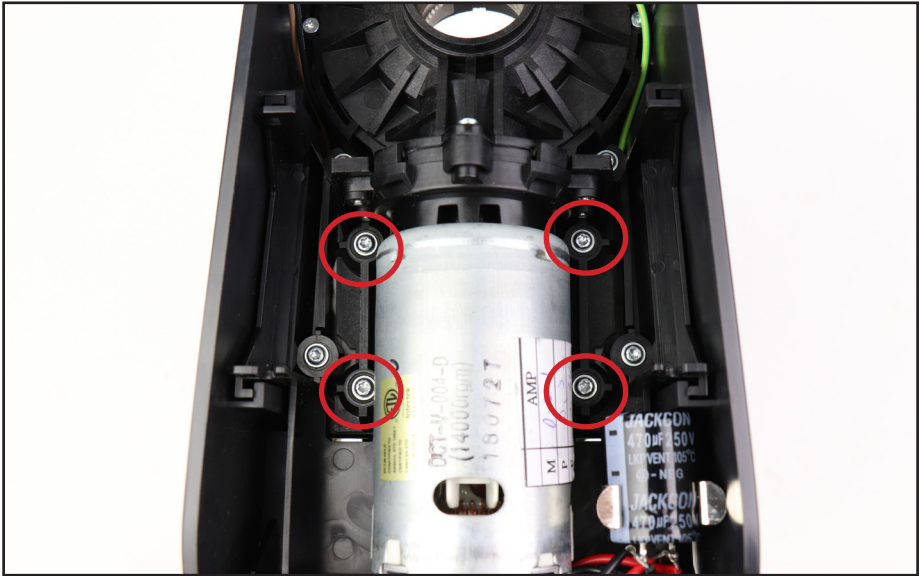
APPENDIX:  
PCB's with Four Screws

ONLY follow these instructions if your PCB has four screws securing it

Unplug the motor

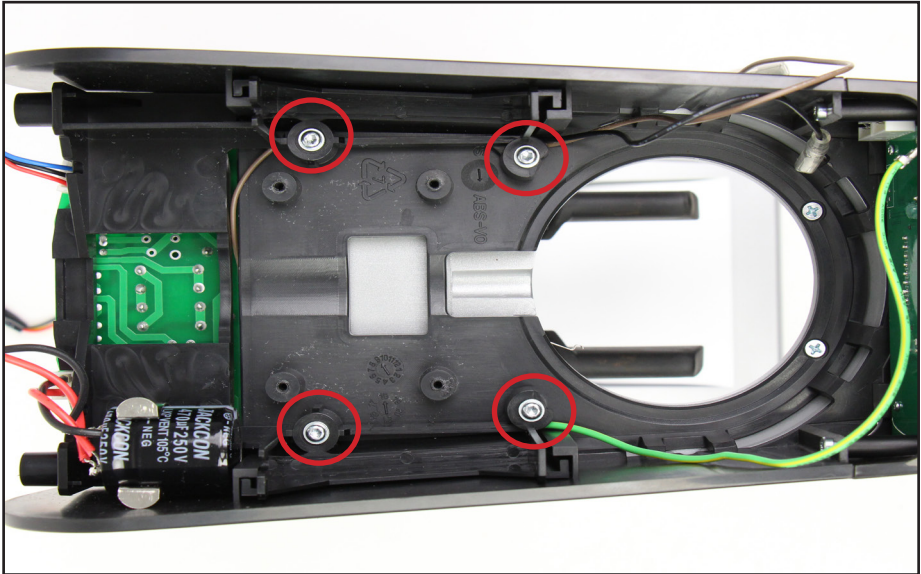


Remove the 4 screws securing the gearbox/motor assembly.



Remove the assembly.

Remove the 4 screws securing the power board bracket.

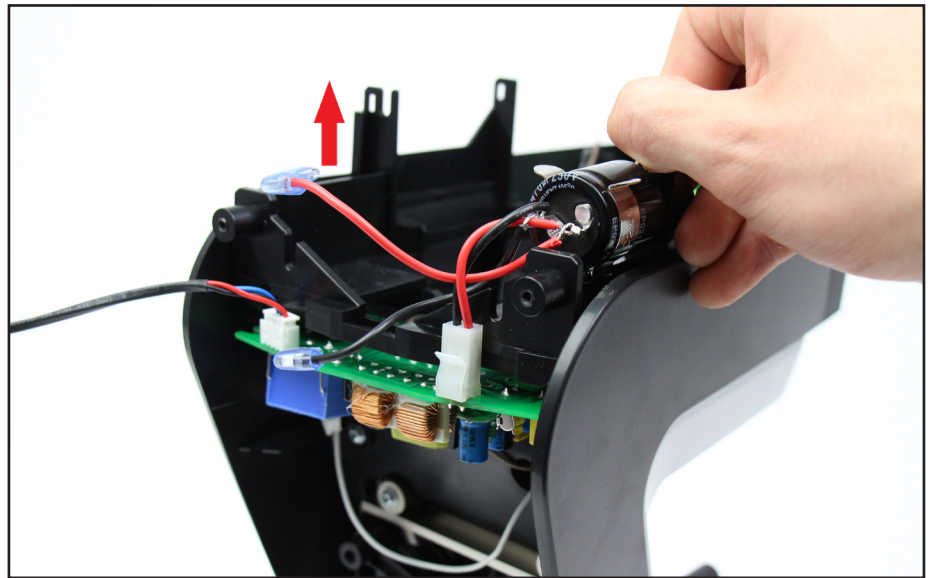




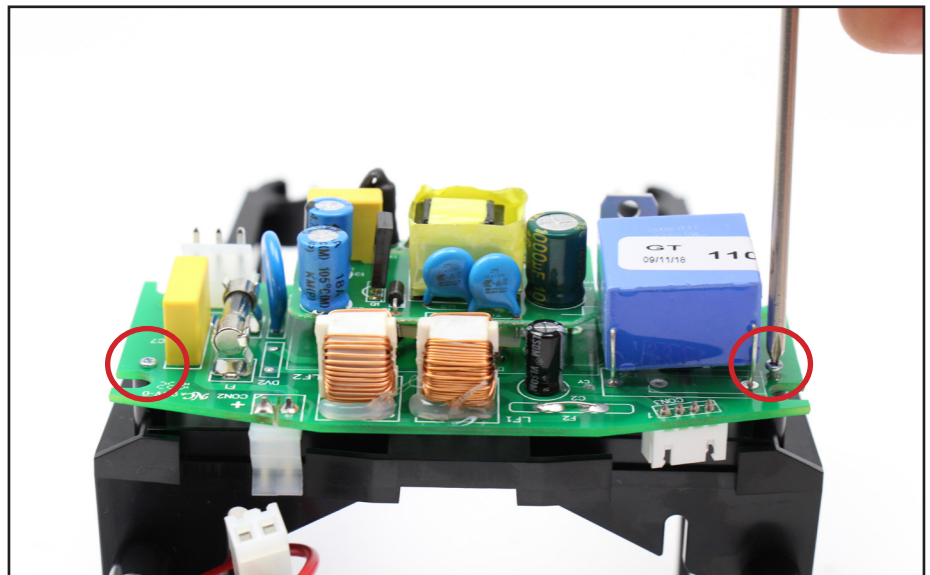


Lift and remove the power board bracket.

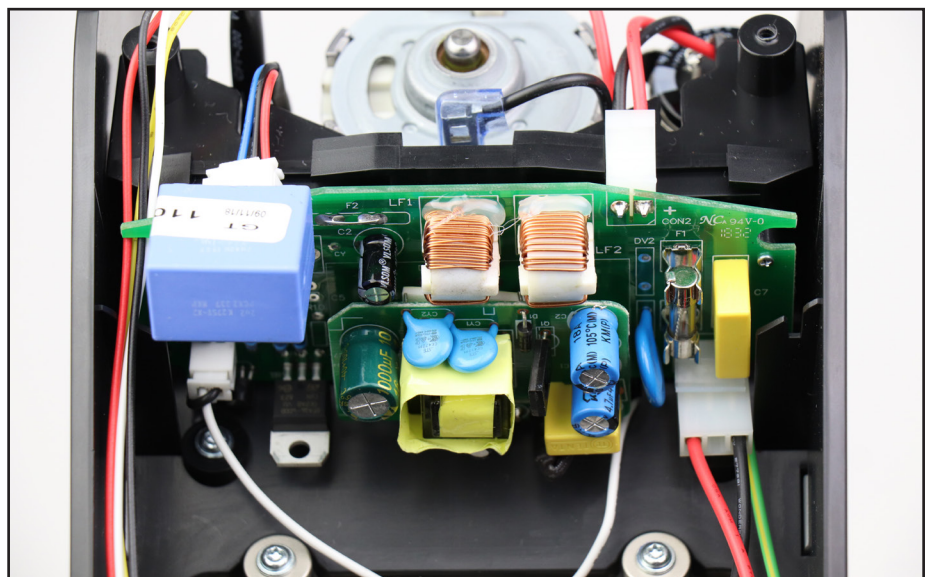
Note wire routing during removal.



Remove the remaining screws from the power board and replace the board.



Inspect wire routing to confirm it is correct.

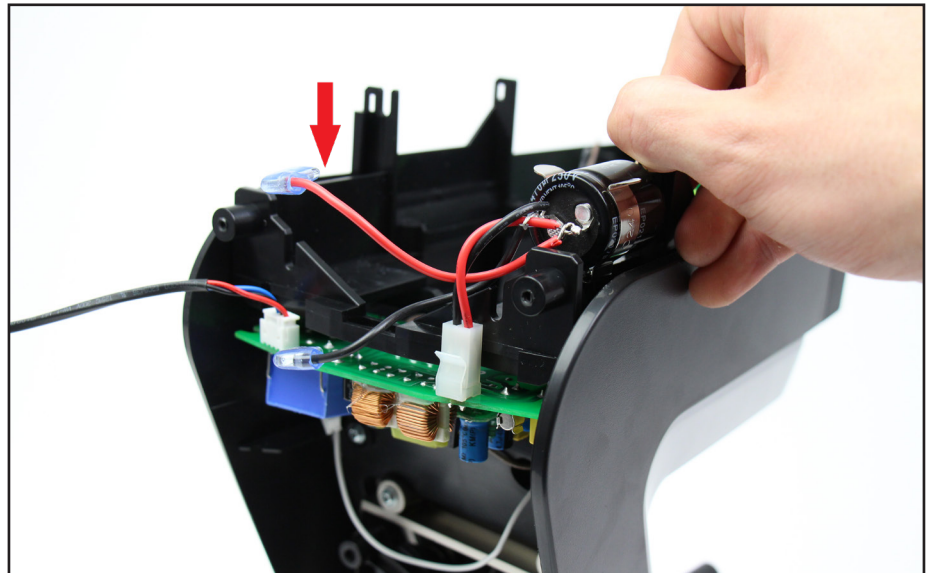




Install the gearbox motor assembly.



Install the new power board, only using the 2 screws towards the rear to secure it to the bracket.



Reinstall the case and return the unit to operation.

If you have any questions or encounter any issues with this guide, contact [support@baratza.com](mailto:support@baratza.com)