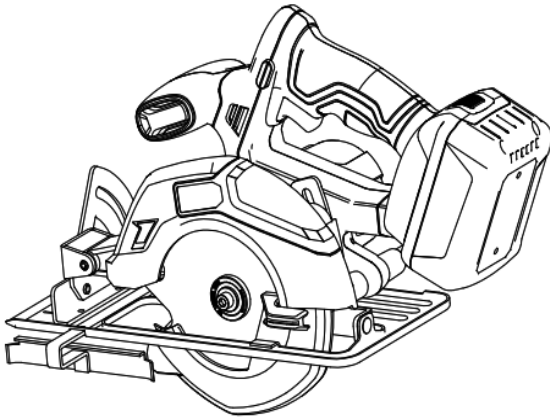


POWERSMART[®]

INSTRUCTION MANUAL

20V Cordless Circular Saw

Model # PS76410A



Have product questions or need technical support? Please feel free to contact us!

Website: www.Amerisuninc.com
www.powersmartusa.com

Toll free: 1-800-791-9458 M-F 9-5 EST

Email: support@amerisuninc.com

CONTENTS

Technical data	3
Introduction	4
Safety information	4
General safety rules.....	5
Special safety rules for circular saw.....	6
Symbols	8
Knowing your Circular Saw.....	9
Assembly instruction.....	10
Operating instruction.....	11
Maintenance.....	14
Trouble shooting.....	15
Exploded view.....	16
Parts list.....	17
Warranty.....	18

TECHNICAL DATA

Cordless Circular Saw	Model # PS76410A
Rated Voltage:	20 V
No Load Speed:	0~3800 rpm
Blade Diameter:	5-1/2 inch, 18 Teeth
Arbor:	1/2 inch
Cutting Capacity:	1-3/5 inch at 90°, 1-2/5 inch at 45°
Battery type:	20V Lithium-ion, 1.5 Ah
Battery model:	PS76018B
Charge time:	1 hour
Charger model:	PS76018C
Package dimensions (L x W x H):	13.4 x 7.7 x 8.7 inches
Weight:	7.5 lb.

INTRODUCTION

Thank You for Purchasing a PowerSmart® Product. This manual provides information regarding the safe operation and maintenance of this product. Every effort has been made to ensure the accuracy of the information in this manual. PowerSmart® reserves the right to change this product and specifications at any time without prior notice.

Please keep this manual available to all users during the entire life of the power tool.



This manual contains special messages to bring attention to potential safety concerns, power tool damage as well as helpful operating and servicing information. Please read all the information carefully to avoid injury and machine damage.

QUESTIONS? PROBLEMS?

Please contact our Customer Service Dept. with any questions and/or comments, either by Email: support@amerisuninc.com, or Toll Free at (800)791-9458. We are available Mon-Fri 9am-5pm EST to help solve any issues that you might encounter.

SAFETY INFORMATION

Before operating this power tool, read and observe all warnings, cautions, and instructions on the power tool and in this Owner's Manual.

NOTE: The following safety information is not meant to cover all possible conditions and situations that may occur. Read the entire Owner's Manual for safety and operating instructions. Failure to follow instructions and safety information could result in serious injury or death.

This safety alert symbol is used to identify safety information about hazards that can result in personal injury.



A signal word (DANGER, WARNING, or CAUTION) is used with the alert symbol to indicate the likelihood and the potential severity of injury. In addition, a hazard symbol may be used to represent the type of hazard.

DANGER Indicates a hazard, which, if not avoided, will result in death or serious injury.

WARNING Indicates a hazard, which, if not avoided, could result in death or serious injury.

CAUTION Indicates a hazard, which, if not avoided, might result in minor or moderate injury.

CAUTION Without the alert symbol, indicates a situation that could result in damage.

GENERAL SAFETY RULES

Safety is a combination of common sense, staying alert, and knowing how your power tool works.

SAVE THESE SAFETY INSTRUCTIONS.



WARNING: Do not operate this unit until you read this instruction manual for safety, operation and maintenance instructions. Failure to follow all instructions listed below may result in electric shock, fire, and/or serious personal injury.

WORK AREA SAFETY

- Keep your work area clean and well lit. Cluttered benches and dark areas invite accidents.
- Do not operate power tools in explosive atmospheres, such as in the presence of flammable liquids, gases, or dust. Power tools create sparks which may ignite the dust or fumes.
- Keep bystanders, children, and visitors away while operating a power tool. Distractions can cause you to lose control.

ELECTRICAL SAFETY

- Power tool plugs must match the outlet. Never modify the plug in any way. Do not use any adapter plugs with earthed (grounded) power tools. Unmodified plugs and matching outlets will reduce risk of electric shock.
- Avoid body contact with earthed or grounded surfaces such as pipes, radiators, ranges and refrigerators. There is an increased risk of electric shock if your body is earthed or grounded.
- Do not expose power tools to rain or wet conditions. Water entering a power tool will increase the risk of electric shock.
- Do not abuse the cord. Never use the cord for carrying, pulling or unplugging the power tool. Keep cord away from heat, oil, sharp edges or moving parts. Damaged or entangled cords increase the risk of electric shock.
- When operating a power tool outdoors, use an extension cord suitable for outdoor use. Use of a cord suitable for outdoor use reduces the risk of electric shock.
- If operating a power tool in a damp location is unavoidable, use a ground fault circuit.

PERSONAL SAFETY

- Stay alert, watch what you are doing and use common sense when operating a power tool. Do not use a power tool while you are tired or under the influence of drugs, alcohol or medication. A moment of inattention while operating power tools may result in serious personal injury.
- Use safety equipment. Always wear eye protection. Dust mask, non-skid safety shoes, hard hat, or hearing protection must be used for appropriate conditions.
- Dress properly. Do not wear loose clothing or jewelry. Contain long hair. Keep your hair, clothing, and gloves away from moving parts. Loose clothes, jewelry, or long hair can be caught in moving parts.
- Avoid accidental starting. Be sure switch is off before connecting to power source and/ or battery pack, pick up or carrying the tool. Carrying power tools with your finger on the switch or energizing power tools that have the switch on invites accidents.
- Remove any adjusting key or wrench before turning the power tool on. A wrench or a key left attached to a rotating part of the power tool may result in personal injury.
- Do not overreach. Keep proper footing and balance at all times. Proper footing and balance enable better control of the power tool in unexpected situations.
- If devices are provided for the connection of dust extraction and collection facilities, ensure these are connected and properly used. Use of dust collection can reduce dust-related hazards.

POWER TOOL USE AND CARE

- Do not force power tool. Use the correct power tool for your application. The correct power tool will do the job better and safer at the rate for which it is designed.
- Do not use the power tool if switch does not turn it on or off. Any power tool that cannot be controlled with the switch is dangerous and must be repaired.
- Disconnect the plug from the power source before making any adjustments, changing accessories, or storing the power tool. Such preventive safety measures reduce the risk of starting the power tool accidentally.
- Store idle power tools out of reach of children and other untrained persons. Power tools are dangerous in the hands of untrained users.
- Maintain power tools with care. Keep cutting tools sharp and clean. Properly maintained power tools, with sharp cutting edges are less likely to bind and are easier to control.
- Check for misalignment or binding of moving parts, breakage of parts, and any other condition that may affect the power tools operation. If damaged, have the power tool serviced before using.
- Use the power tool, accessories and tool bits etc. in accordance with these instructions, taking into account the working conditions and the work to be performed. Use of the power tool for operations different from those intended could result in a hazardous situation.

BATTERY TOOL USE AND CARE

- Recharge only with the charger specified by the manufacturer. A charger that is suitable for one type of battery pack may create a risk of fire when used with another battery pack.
- Use power tools only with specifically designated battery packs. Use of any another battery packs may create a risk of injury and fire. Use only POWERSMART battery (Model#PS76018B)
- When battery pack is not in use, keep it away from other metal objects, like paper clips, coins, keys, nails, screws or other small metal objects, that can make a connection from one terminal to another. Shorting the battery terminals together may cause burns or a fire.
- Under extreme usage or temperature conditions, battery leakage may occur. If liquid comes in contact with your skin, wash immediately with soap and water, then neutralize with lemon juice or vinegar. If liquid gets into your eyes, flush them with clean water for at least 10 minutes, then seek immediate medical attention. Following this rule will reduce the risk of serious personal injury.

SERVICE

- Tool service must be performed only by qualified repair personnel. Service or maintenance performed by unqualified personnel could result in a risk of injury.
- When servicing a tool, use only identical replacement parts. Follow instructions in the Maintenance section of this manual. Use of unauthorized parts or failure to follow Maintenance Instructions may create a risk of electric shock or injury.

SPECIFIC SAFETY RULES FOR CORDLESS CIRCULAR SAW







- Keep hands away from cutting area and blade. Keep your second hand on auxiliary handle or motor housing. If both hands are holding the saw, they cannot be cut by the blade.
- Do not reach underneath the workpiece. The guard cannot protect you from the blade below the workpiece.
- Adjust the cutting depth to the thickness of the workpiece. Less than a full tooth of the blade teeth should be visible below the workpiece.
- Never hold piece being cut in your hands or across your leg. Secure the workpiece to a stable platform. It is important to support the work properly to minimize body exposure, blade binding, or loss of control.

- Hold power tool by insulated gripping surfaces when performing an operation where the cutting tool may contact hidden wiring or its own cord. Contact with a “live” wire will also make exposed metal parts of the power tool “live” and shock the operator.
- When ripping always use a rip fence or straight edge guide. This improves the accuracy of cut and reduces the chance of blade binding.
- Always use blades with correct size and shape (diamond versus round) of arbor holes. Blades that do not match the mounting hardware of the saw will run eccentrically, causing loss of control.
- Never use damaged or incorrect blade washers or bolt. The blade washers and bolt were specially designed for your saw, for optimum performance and safety of operation.
- Causes and operator prevention of kickback:
- Kickback is a sudden reaction to a pinched, bound or misaligned saw blade, causing an uncontrolled saw to lift up and out of the workpiece toward the operator.
- When the blade is pinched or bound tightly by the kerf closing down, the blade stalls and the motor reaction drives the unit rapidly back toward the operator.
- If the blade becomes twisted or misaligned in the cut, the teeth at the back edge of the blade can dig into the top surface of the wood causing the blade to climb out of the kerf and jump back toward the operator.
- Kick back is the result of saw misuse and/or in correct operating procedures or conditions and can be avoided by taking proper precautions as given below.
- Maintain a firm grip with both hands on the saw and position your arms to resist kickback forces. Position your body to either side of the blade, but not in line with the blade. Kick back could cause the saw to jump backwards, but kickback forces can be controlled by the operator, if proper precautions are taken.
- When blade is binding, or when interrupting a cut for any reason, release the trigger and hold the saw motionless in the material until the blade comes to a complete stop. Never attempt to remove the saw from the work or pull the saw backward while the blade is in motion or kickback may occur. Investigate and take corrective actions to eliminate the cause of blade binding.
- When restarting a saw in the workpiece, center the saw blade in the kerf and check that saw teeth are not engaged into the material. If saw blade is binding, it may walk up or kickback from the workpiece as the saw is restarted.
- Support large panels to minimize the risk of blade pinching and kickback. Large panels tend to sag under their own weight. Supports must be placed under the panel on both sides, near the line of cut and near the edge of the panel.
- Do not use dull or damaged blades. Unsharpened or improperly set blades produce narrow kerf causing excessive friction, blade binding and kickback.
- Blade depth and bevel adjusting locking levers must be tight and secure before making cut. If blade adjustment shifts while cutting, it may cause binding and kickback.
- Use extra caution when making a “plunge cut” into existing walls or other blind areas. The protruding blade may cut objects that can cause kickback. Inner pendulum guard
- Check lower guard for proper closing before each use. Do not operate the saw if lower guard does not move freely and close instantly. Never clamp or tie the lower guard into the open position. If saw is accidentally dropped, lower guard may be bent. Raise the lower guard with the retracting handle and make sure it moves freely and does not touch the blade or any other part, in all angles and depths of cut.
- Check the operation of the lower guard spring. If the guard and the spring are not operating properly, they must be serviced before use. Lower guard may operate sluggishly due to damaged parts, gummy deposits, or a build-up of debris.
- Lower guard may be retracted manually only for special cuts such as “plunge cuts” and “compound cuts.” Raise lower guard by retracting handle and as soon as blade enters the material, the lower guard must be released. For all other sawing, the lower guard should operate automatically.
-

- Always observe that the lower guard is covering the blade before placing saw down on bench or floor. An unprotected, coasting blade will cause the saw to walk backwards, cutting whatever is in its path. Be aware of the time it takes for the blade to stop after switch is released.
- Save these instructions. Refer to them frequently and use them to instruct others who may use this tool. If you loan someone this tool, loan them these instructions also to prevent misuse of the product and possible injury.

SYMBOLS

Some of the following symbols may be used on this product. Please study them and learn their meaning. Proper interpretation of these symbols will allow you to operate the product better and safer.

SYMBOL	NAME	DESIGNATION/EXPLANATION
V	Volts	Voltage
A	Amperes	Current
Hz	Hertz	Frequency (cycles per second)
W	Watts	Power
MIN	Minutes	Time
	Safety Alert	Precautions that involve your safety.
	Read the user's manual	To reduce the risk of injury, user must read and understand user's manual before using this product.
	Eye protection	Wear eye protection when operating this equipment.
	Wet conditions alert	Do not expose to rain or use in damp locations.
	No Hands Symbol	Failure to keep your hands away from the blade will result in serious personal injury.
	Electric shock alert	Beware of electric shock hazard.

KNOWING YOUR CIRCULAR SAW

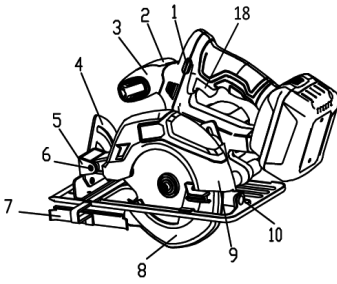


Fig.1

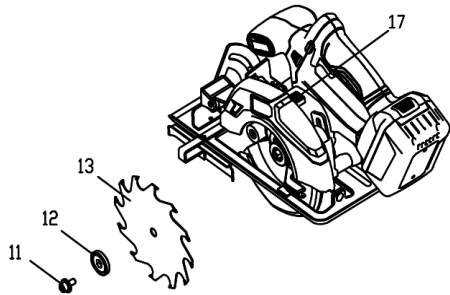


Fig.2

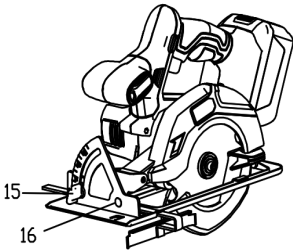


Fig.3

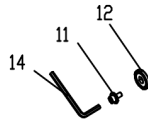


Fig.4

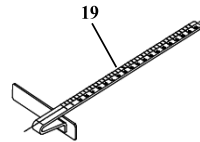


Fig.5

- | | | | |
|----|---------------------|----|----------------|
| 1 | Lock-off button | 2 | Right housing |
| 3 | Left housing | 4 | Angle scale |
| 5 | Angle frame | 6 | Screw |
| 7 | Guide rules | 8 | Movable guard |
| 9 | Lower guard | 10 | Depth frame |
| 11 | Blade clamp bolt | 12 | Outer flange |
| 13 | Saw blade | 14 | Hex key |
| 15 | Lock knob for angle | 16 | Rivet |
| 17 | Spindle lock button | 18 | Switch trigger |
| 19 | Parallel guide | | |

Unpacking

Unpack the power tool and all its parts, and compare against the list below. Do not discard the carton or any packaging materials. Please call 1-800-791-9458 or E-mail us at support@amerisuninc.com if any parts are damaged or missing.

Including: Cordless circular saw/ Saw blade / Parallel guide/ Hex key/ Battery and Charger / User manual

ASSEMBLY INSTRUCTION



WARNING:

Do not use this product if any parts on the packing list are already assembled to your product when you unpack it. Parts on this list are not assembled to the product by the manufacturer and require customer installation. Use of a product that may have been improperly assembled could result in serious personal injury.



WARNING:

If any parts are damaged or missing do not operate this product until the parts are replaced. Use of this product with damaged or missing parts could result in serious personal injury.



WARNING:

Do not attempt to modify this product or create accessories not recommended for use with this product. Any such alteration or modification is misuse and could result in a hazardous condition leading to possible serious personal injury.



WARNING:

Do not connect to power supply until assembly is complete. Failure to comply could result in accidental starting and possible serious personal injury.

INSTALLING AND REMOVING SAW BLADE



WARNING: Before any work on the power tool, remove the battery.

When mounting the saw blade, wear protective gloves. Danger of injury when touching the saw blade. Use only saw blades suitable for the material being worked. Never use a blade that is too thick to allow outer blade washer to engage with the flats on the spindle.

To install the saw blade (see fig.2)

1. Depress the spindle lock button (17) and remove the blade clamp bolt (11) and outer flange (12).
2. Fit the saw blade inside the lower guard and onto the spindle.
3. Make sure the saw teeth and arrow on the blade is to be the same direction as the arrow on the lower guard.
4. Reinstall the outer flange, and tighten the blade clamp bolt.
5. Make sure that the saw blade runs freely by turning the blade by hand.

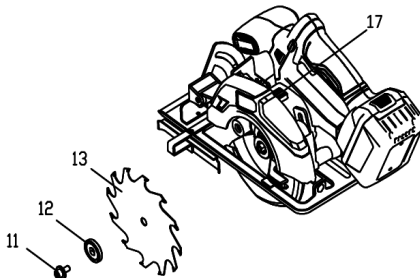


Fig.2

To remove the saw blade

1. Press the spindle lock button so that the blade cannot revolve.
2. Use the hex key to loosen the bolt counterclockwise.
3. Then remove the bolt, outer flange and saw blade.

CONNECTING AND REMOVING BATTERY

IMPORTANT!

The battery pack is not charged when it is purchased. Before using the power tool for the first time, place the battery pack in the battery charger and charge. Make sure to read all safety precautions, and follow the instructions in the battery charger section.

To install the battery pack

To install the battery pack into the bottom of the handle, align the rails of the battery pack with the rails in the handle and push the battery into the handle. To connect the battery, slide the battery pack fully forward. Until the latch locks into place.

To remove the battery pack

Press the battery release button ,Slide the battery pack backward, and then pull or lift the battery out of the tool .



WARNING:

Follow these instructions in order to avoid injury and to reduce the risk of electric shock or fire:

- Replace the battery pack or the charger immediately if the battery case or charger cord is damaged.
- Verify that the battery pack is removed before inspecting, adjusting, or performing maintenance on any part of the power tool.
- Read, understand, and follow the instructions.

OPERATING INSTRUCTION

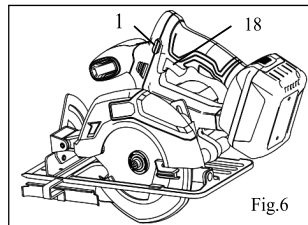
STARTING/ STOPPING THE SAW



WARNING: Before engage the switch trigger, check that the saw blade is properly fitted and run smoothly, the blade clamp bolt is well tightened.

To start the saw

- Depress the lock-button (1)
 - Depress the switch trigger (18).
- Always let the blade reach full speed, then guide the saw into the workpiece.



To stop the saw

Release the switch trigger (18).



WARNING: After release the switch trigger, allow the blade to come to a complete stop. Do not remove the saw from the workpiece while the blade is moving.

LOCK-OFF BUTTON

The lock-off button reduces the possibility of accidental starting. The lock-off button is located on the handle above the switch trigger. The lock-off button must be depressed before you pull the switch trigger. The lock resets each time the trigger is released.

Note: You can depress the lock-off button from either the left or right side.

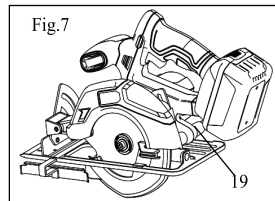
ADJUSTMENTS

Depth adjustment (see fig.7)



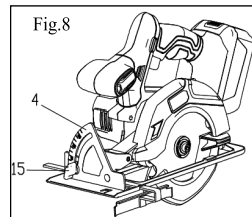
CAUTION: For cleaner, safer cuts, set cut depth so that no more than one blade tooth projects below workpiece. Using proper cut depth helps to reduce potential for dangerous kickback which can cause personal injury.

1. Loosen the lock lever for depth adjustment (19).
2. Hold the base plate flat against the edge of the work piece and lift the body of the saw until the blade is at the right depth determined by the depth of cut scale.
3. Tighten the lock lever for depth adjustment.



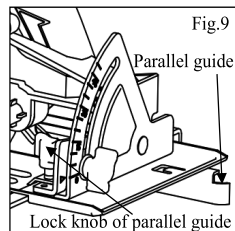
Angle adjustment (see fig.8)

1. Loosen the Lock knob for angle adjustment (15).
2. Adjust the shoe to the desired angle between 0° to 45°. [See angle scale (4)].
3. Tighten the lock knob for angle adjustment.



Parallel cut adjustment (see fig.9)

- Loosen the lock knob of parallel guide.
- Slide the parallel guide through the slots in the shoe to the desired width.
- Tighten the lock bolt to fit it in the position.
- Ensure that the edge guide rests against the wood along its entire length to give a consistent parallel cut.



TEMPERATURE CONTROL /OVERLOAD PROTECTION

When the temperature of battery is too high and the machine switches off automatically.

- Switch the power tool off.
 - Allow the battery to cool down before continuing to work.
- When the power tool is blocked and switches off automatically.
- Remove the power tool from the workpiece.
 - As soon as the blockage is corrected, the power tool will continue to work at the set stroke rate.

CUTTING TIPS

General cutting

- When starting, always hold the saw handle with one hand and the auxiliary handle with the other hand. Never force the saw but maintain a light and continuous pressure after completing the cut allow the saw to come to a complete stop. When cutting is interrupted, resume cutting by allowing the blade to reach full speed and then reentering the cut slowly.
- When cutting across the grain, the fibers of the wood have a tendency to lift and tear, moving the saw slowly minimizes this effect.

Pocket cutting

- Disconnect the plug from the power supply before making any adjustments. Set the depth adjustment based on the thickness of the line drawing for the cut. raise the lower guard by using the lift lever.
- With the blade barely above the material to be cut, start the saw and allow the blade to come to full speed. Gradually lower the blade unto the material to be cut using the front end of the shoe as a pivot point. When the blade starts cutting, release the lower guard. When the shoe is resting flat on the surface being cut, proceed cutting in a forward direction to the end of the cut. Allow the blade to come to a full stop before removing it from the cut. Never pull the saw backward since the blade will climb out of the cut and kickback will occur. Turn the saw around and finish the cut in a normal manner, sawing forward. Use a jigsaw or a hand saw to finish the cut in the corners, if required.

Cutting Large Sheets

- Large sheet or boards require support to prevent bends or sags. If you attempt to cut without leveling and properly supporting the work piece, the blade will tend to bind, causing kickback.
- Support the panel or board close to the cut. Be sure to set the blade adjustment so that you can cut through the material without cutting into the table or workbench. Suggestion: use two by fours to support the board or panel to be cut. If the piece is too large for the workbench, use the floor with the two-by fours supporting the wood.

IMPORTANT CHARGING NOTES



WARNING: Battery packs are shipped in a low charge condition to prevent possible problems. Therefore, you should charge them before first use.

- Use only POWERSMART battery charger (Model#PS76018C)
- Charge time is approximately 1 hour, and is dependent upon the type of battery pack.
- Make sure the power supply is normal household voltage, 120V, AC only, 60Hz.
- Attach the battery pack to the charger by aligning the raised ribs on the battery pack with the grooves in the charger, then slide the battery pack onto the charger.
- Press down on the battery pack to be sure contacts on the battery pack engage properly with contacts in the charger. Latches should snap into ensure charger is correctly connected.
- Do not place the charger in an area of extreme heat or cold. It will work best at normal room temperature.
- The battery pack may become slightly warm to the touch while charging. This is normal and does not indicate a problem.
- The red LEDs will remain on while charging.
- When the green LEDs is light, this indicates the battery is fully charged.
- To remove the battery pack from the charger, depress latches and pull up on the battery pack.
- When the battery pack is fully charged, remove it from the charger.

MAINTENANCE



WARNING: In order to avoid personal injury and the risk of fire and electric shock, remove the battery pack before adjusting, inspecting, or cleaning the power tool.



WARNING: When servicing, use only identical replacement parts. Use of any other parts could create a hazard or cause product damage.

- Be alert for battery packs that are nearing their end of life. If you notice decreased tool performance or significantly shorter running time between charges then it is time to replace the battery pack. Failure to do so can cause the tool to operate improperly or damage the charger.
- Clean the saw blade holder preferably with compressed air or a soft brush. Remove the saw blade from the power tool for this. Ensure proper operation of the saw blade holder by applying a suitable lubricant.
- Ventilation openings and switch levers must be kept clean and free of foreign matter. Do not attempt to clean by inserting pointed objects through opening.
- Avoid using solvents when cleaning plastic parts. Most plastics are susceptible to damage from various types of commercial solvents and may be damaged by their use. Use clean clothes to remove dirt, oil, grease, etc.

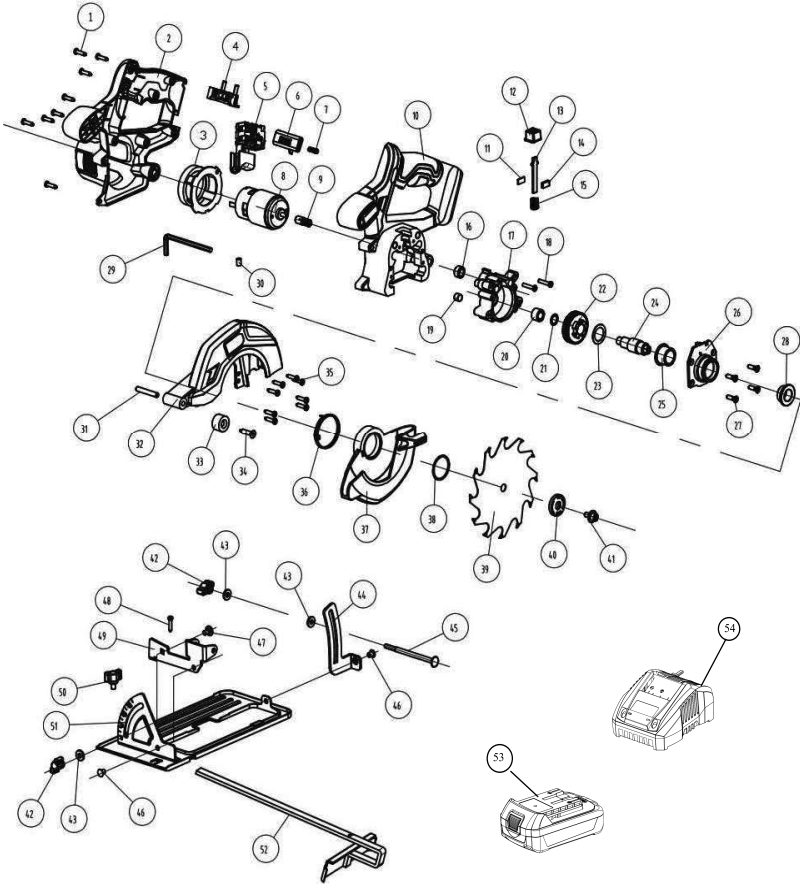
TROUBLE SHOOTING



WARNING: Read instruction manual first! Remove battery pack from the tool before making adjustments or assembling accessories.

TROUBLE: TOOL WILL NOT START	
PROBLEM	<ol style="list-style-type: none">1. Battery pack not charged.2. Battery pack not installed properly.3. Battery pack temperature is too hot or cold for operation.4. Burned out switch.
REMEDY	<ol style="list-style-type: none">1. If equipped, check battery charge condition lights for charge status. Charge battery if needed.2. Confirm battery is locked and secured to the tool.3. Let battery sit a few minutes or until it reaches normal operating temperature.4. Replace the switch provided by POWERSMART.
TROUBLE: BATTERY PACK WILL NOT CHARGE	
PROBLEM	<ol style="list-style-type: none">1. Charger not plugged into outlet.2. Battery pack not completely inserted into charger.
REMEDY	<ol style="list-style-type: none">1. Confirm charger is plugged into outlet.2. Confirm battery pack is inserted into charger completely.

EXPLODED VIEW



PARTS LIST

Item	Stock#	Description	Qty.
1	PS76410A-001	Screw ST4.2x14	8
2	PS76410A-002	Right housing	1
3	PS76410A-003	Baffle ring	1
4	PS76410A-004	Metal pin	1
5	PS76410A-005	Switch	1
6	PS76410A-006	Switch button	1
7	PS76410A-007	Button spring	1
8	PS76410A-008	Motor	1
9	PS76410A-009	Motor gear	1
10	PS76410A-010	Left housing	1
11	PS76410A-011	Sponge	1
12	PS76410A-012	Spindle lock button	1
13	PS76410A-013	Spindle lock	1
14	PS76410A-014	Sponge	1
15	PS76410A-015	Spring	1
16	PS76410A-016	Small gear sleeve	1
17	PS76410A-017	Gear box	1
18	PS76410A-018	Screw M4x18	2
19	PS76410A-019	Woolfelt	1
20	PS76410A-020	Small bearing sleeve	1
21	PS76410A-021	Washer 16	1
22	PS76410A-022	Gear	1
23	PS76410A-023	Washer	1
24	PS76410A-024	Spindle	1
25	PS76410A-025	Collar bush	1
26	PS76410A-026	Front cover	1
27	PS76410A-027	Screw ST4.2x16	4

Item	Stock#	Description	Qty.
28	PS76410A-028	Spindle bush	1
29	PS76410A-029	Hex key 5	1
30	PS76410A-030	Rubber pinφ6x9	1
31	PS76410A-031	Spring round pin 6x40	1
32	PS76410A-032	Lower guard	1
33	PS76410A-033	Retainer ring	1
34	PS76410A-034	Screw ST5.5x25	1
35	PS76410A-035	Screw ST4.2x18	8
36	PS76410A-036	Torsional spring	1
37	PS76410A-037	Movable guard	1
38	PS76410A-038	Steel retaining ring	1
39	PS76410A-039	Saw blade	1
40	PS76410A-040	Outer flange	1
41	PS76410A-041	Blade clamp bolt M6x12	1
42	PS76410A-042	Angle button	2
43	PS76410A-043	Big washer 14	3
44	PS76410A-044	Depth frame	1
45	PS76410A-045	Lever	1
46	PS76410A-046	Rivet 6x7	2
47	PS76410A-047	Nut M6x12	1
48	PS76410A-048	Screw M4x16	1
49	PS76410A-049	Angle frame	1
50	PS76410A-050	Button	1
51	PS76410A-051	Base	1
52	PS76410A-052	Parallel guide	1
53	PS76018B	Battery pack	1
54	PS76018C	Charger	1

TWO (2) YEARS LIMITED WARRANTY

PowerSmart® is committed to building tools that are dependable for years. Our warranties are consistent with our commitment and dedication to quality.

TWO (2) YEARS LIMITED WARRANTY OF POWERSMART PRODUCTS FOR HOME USE.

PowerSmart ("Seller") warrants to the original purchaser only, that all PowerSmart consumer power tools will be free from defects in material or workmanship for a period of two (2) years from date of purchase. Ninety (90) days for all PowerSmart Products, if the tool is used for professional or commercial use.

SELLER'S SOLE OBLIGATION AND YOUR EXCLUSIVE REMEDY under this Two (2) Years Limited Warranty and, to the extent permitted by law, any warranty or condition implied by law, shall be the repair or replacement of parts, without charge, which are defective in material or workmanship and which have not been misused, carelessly handled, or misrepaired by persons other than Seller or Authorized Service Center. To make a claim under this Limited Warranty, you must return the entire power tool product; transportation prepaid, to PowerSmart Include a legible copy of the original receipt, which lists the date of purchase (month and year) and the name of the company purchased from.

THIS LIMITED WARRANTY DOES NOT APPLY TO ANY ACCESSORY ITEMS INCLUDED WITH THE TOOL SUCH AS CIRCULAR SAW BLADES OTHER RELATED ITEMS OR TO ANY REPLACEMENT PARTS LISTED UNDER MAINTENANCE.

ANY IMPLIED WARRANTIES SHALL BE LIMITED IN DURATION TO TWO (2) YEARS FROM DATE OF PURCHASE. SOME STATES IN THE U.S. AND SOME CANADIAN PROVINCES DO NOT ALLOW LIMITATIONS ON HOW LONG AN IMPLIED WARRANTY LASTS, SO THE ABOVE LIMITATION MAY NOT APPLY TO YOU.

IN NO EVENT SHALL SELLER BE LIABLE FOR ANY INCIDENTAL OR CONSEQUENTIAL DAMAGES (INCLUDING BUT NOT LIMITED TO LIABILITY FOR LOSS OF PROFITS) ARISING FROM THE SALE OR USE OF THIS PRODUCT. SOME STATES IN THE U.S. AND SOME CANADIAN PROVINCES DO NOT ALLOW THE EXCLUSION OR LIMITATION OF INCIDENTAL OR CONSEQUENTIAL DAMAGES, SO THE ABOVE LIMITATION OR EXCLUSION MAY NOT APPLY TO YOU.

THIS LIMITED WARRANTY GIVES YOU SPECIFIC LEGAL RIGHTS, AND YOU MAY ALSO HAVE OTHER RIGHTS WHICH VARY FROM STATE TO STATE IN THE U.S., PROVINCE TO PROVINCE IN CANADA AND FROM COUNTRY TO COUNTRY.

For questions / comments, technical assistance or repair parts –
Please call toll free at: 1-800-791-9458 (M-F 9am – 5pm EST)
Email: support@amerisuninc.com

SAVE YOUR RECEIPTS. THIS WARRANTY IS VOID WITHOUT THEM.

