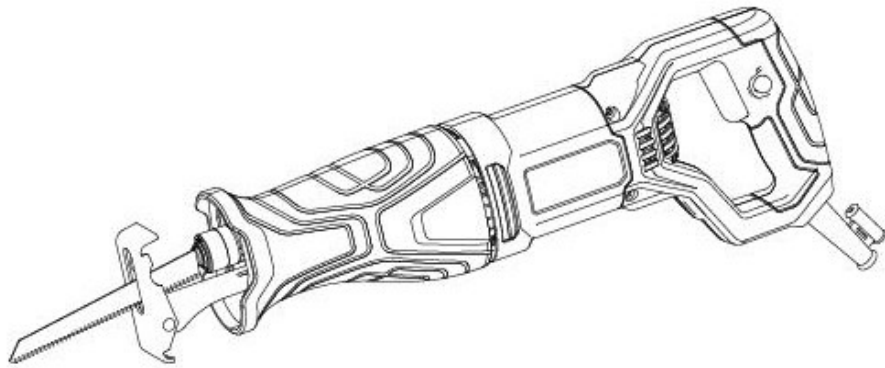




INSTRUCTION MANUAL

Electric Reciprocating Saw

Model # PS4010



Have product questions or need technical support? Please feel free to contact us!

Website: www.Amerisuninc.com

Toll free: 1-800-791-9458 M-F 9-5 EST

Email: support@amerisuninc.com

CONTENTS

Technical data..... 3

General safety rules..... 4

Electrical information..... 6

Knowing your electric Reciprocating Saw..... 7

Assembly instruction..... 7

Operating instruction..... 8

Maintenance..... 9

Exploded view..... 10

Parts list..... 11

Warranty..... 12

TECHNICAL DATA

Electric Reciprocating Saw	Model # PS4010
Motor:	120 V, 60 Hz, 7.5 Amp
Variable Speed:	0 - 2800 rpm
Stroke length:	28 mm
Package dimensions (L x W x H):	20.5x7.9 x3.7 inches
Weight:	6.7 lb.

Thank you for purchasing Power Smart products. Please register online at **www. Amerisuninc.com**.
The information will allow us to track your warranty and update on your unit.

Important: Our company does not provide email or personal information to any third party for any reason. For any questions check our website or call customer service at (800)791 9458.

Warning! We strongly recommend that this item not be modified and/or used for any application other than that for which it was designed. If you have any questions relative to its application, do not use the equipment until you have consulted us and we have advised you.
Contact Power Smart at (800)791-9458 M-F 9am-5pm EST

GENERAL SAFETY RULES

WARNING! Read and understand all instructions. Failure to follow all instructions listed below, may result in electric shock, fire and/or serious personal injury. .

SAVE THESE INSTRUCTIONS.

Work Area

- Keep your work area clean and well lit. Cluttered benches and dark areas invite accidents.
- Do not operate power tools in explosive atmospheres, such as in the presence of flammable liquids, gases, or dust. Power tools create sparks which may ignite the dust or fumes.
- Keep bystanders, children, and visitors away while operating a power tool. Distractions can cause you to lose control.

Electrical Safety

- Grounded tools must be plugged into an outlet properly installed and grounded in accordance with all codes and ordinances. Never remove the grounding prong or modify the plug in any way. Do not use any adaptor plugs. Check with a qualified electrician if you are in doubt as to whether the outlet is properly grounded. If the tools should electrically malfunction or break down, grounding provides a low resistance path to carry electricity away from the user.
- Applicable only to Class I (grounded) tools.
- Double Insulated tools are equipped with a polarized plug (one blade is wider than the other.) This plug will fit in a polarized outlet only one way. If the plug does not fit fully in the outlet, reverse the plug. If it still does not fit, contact a qualified electrician to install a polarized outlet.
- Do not change the plug in any way. Double Insulation eliminates the need for the three wire grounded
- Power cord and grounded power supply system.
- Applicable only to Class II tools.
- Avoid body contact with grounded surfaces such as pipes, radiators, ranges and refrigerators. There is an increased risk of electric shock if your body is grounded.
- Don't expose power tools to rain or wet conditions. Water entering a power tool will increase the risk of electric shock.
- This instruction need not be provided for tools classified watertight or splash proof.
- Do not abuse the cord. Never use the cord to carry the tools or pull the plug from an outlet. Keep cord away from heat, oil, sharp edges or moving parts. Replace damaged cords immediately. Damaged cords increase the risk of electric shock.
- When operating a power tool outside, use an outdoor extension cord. These cords are rated for outdoor use and reduce the risk of electric shock.

PERSONAL SAFETY

- Stay alert, watch what you are doing and use common sense when operating a power tool. Do not use a power tool while you are tired or under the influence of drugs, alcohol or medication. A moment of inattention while operating power tools may result in serious personal injury.

- Dress properly. Do not wear loose clothing or jewelry. Contain long hair. Keep your hair, clothing, and gloves away from moving parts. Loose clothes, jewelry, or long hair can be caught in moving parts.
- Avoid accidental starting. Be sure switch is off before plugging in. Carrying tools with your finger on the switch or plugging in tools that have the switch on invites accidents.
- Remove adjusting keys or switches before turning the tool on. A wrench or a key that is left attached to a rotating part of the tool may result in personal injury.
- Do not overreach. Keep proper footing and balance at all times. Proper footing and balance enables better control of the tool in unexpected situations.
- Use safety equipment. Always wear eye protection. Dust mask, non-skid safety shoes, hard hat, or hearing protection must be used for appropriate conditions.

Tool Use and Care

- Use clamps or other practical way to secure and support the workpiece to a stable platform. Holding the work by hand or against your body is unstable and may lead to loss of control.
- Do not force tool. Use the correct tool for your application. The correct tool will do the job better and safer at the rate for which it is designed.
- Do not use tool if switch does not turn it on or off. Any tool that cannot be controlled with the switch is dangerous and must be repaired.
- Disconnect the plug from the power source before making any adjustments, changing accessories, or storing the tool. Such preventive safety measures reduce the risk of starting the tool accidentally.
- Store idle tools out of reach of children and other untrained persons. Tools are dangerous in the hands of untrained users.
- Maintain tools with care. Keep cutting tools sharp and clean. Properly maintained tools, with sharp cutting edges are less likely to bind and are easier to control.
- Check for misalignment or binding of moving parts, breakage of parts, and any other condition that may affect the tools operation. If damaged, have the tool serviced before using.
- Many accidents are caused by poorly maintained tools.
- Use only accessories that are recommended by the manufacturer for your model.
- Accessories that may be suitable for one tool, may become hazardous when used on another tool.

SERVICE

- Tool service must be performed only by qualified repair personnel. Service or maintenance performed by unqualified personnel could result in a risk of injury.
- When servicing a tool, use only identical replacement parts. Follow instructions in the Maintenance section of this manual. Use of unauthorized parts or failure to follow Maintenance Instructions may create a risk of electric shock or injury.

Specific Safety Rules:

- Hold tool by insulated gripping surfaces when performing an operation where the cutting tool may contact hidden wiring or its own cord. Contact with a live wire will make exposed metal parts of the tool live and shock the operator.

ELECTRICAL INFORMATION

Guidelines for using extension cords

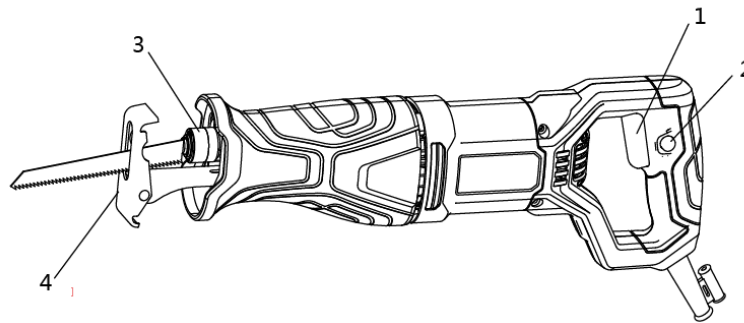
When using an extension cord, be sure to use one heavy enough to carry the current your product will draw. An undersized cord will cause a drop in line voltage resulting in loss of power and overheating. The following table shows the correct size to use depending on cord length and nameplate ampere rating. If in doubt, use the next heavier gage. The smaller the gauge number, the heavier the cord.

Minimum Gage for Cord Sets					
Volts		Total Length of Cord in Feet			
120V		0-25	26-50	51-100	101-150
		(0-7,6m)	(7,6-15,2m)	(15,2-30,4m)	(30,4-45,7m)
Ampere Rating		American Wire Gage			
More Than	Not more Than				
0 -	6	18	16	16	14
6 -	10	18	16	14	12
10 -	12	16	16	14	12
12 -	16	14	12	Not Recommended	



WARNING: Do not expose to rain or use in damp locations.

KNOWING YOUR ELECTRIC RECIPROCATING SAW



1 Power switch
3 Blade clamp

2 Lock-on button
4 Bracket

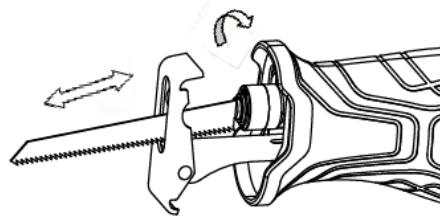
ASSEMBLY INSTRUCTION

This package contains:

- 1 hex key
- 1 metal cutting blade
- 1 wood cutting blade

Check for damage to the tool, parts or accessories which may have occurred during transport. Take the time to thoroughly read and understand this manual prior to operation.

To install cutting blade



1. Unplug power cord first.
2. Aim blade at Blade Clamp then insert blade with teeth facing up or down as needed.
3. Tighten the screw with hex key wrench.
4. Pull on blade to make sure it is securely fastened.
5. Plug in power cord to operate tool.
6. Operate the contrary to the above steps to disassemble blade.

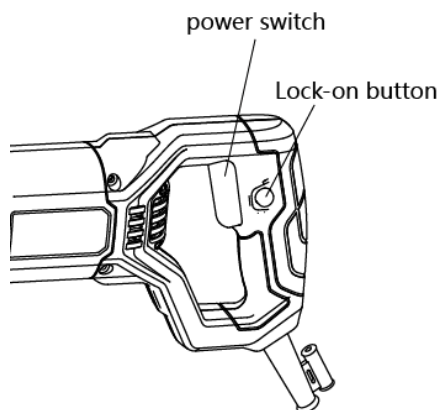


WARNING! Before plugging in power cord, always pull on the blade to make sure it is securely locked in the clamp. Failure to do so may result in serious injury.

OPERATION INSTRUCTION

Power Switch and lock-on Button:

To start saw, squeeze Power Switch with finger. More switch travel will achieve higher speeds. The maximum speed can be adjusted with the Variable Speed Switch. To maintain a certain speed, follow the previous instruction and engage the lock on Button. To disengage Lock-on Button, simply squeeze the Power Switch to release.

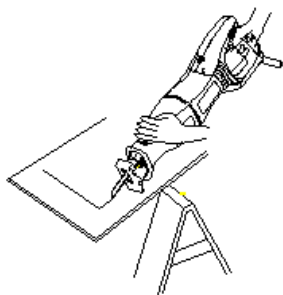


General Cutting

Hold your saw firmly in front and clearly away from you. Make sure saw blade is clear of any foreign material and that power cord and extension cord are out of the blade path. Be sure material to be cut is held firmly. Small work pieces should be secured clamped in a vice or with clamps to the work bench or table. Mark the line of cut clearly. Pull in the power switch to start the cutting action. Set the shoe on the work. **DO NOT FORCE.** Use only enough pressure to keep the saw cutting. Allow the blade and saw to do the work.

Plunge Cutting

Clearly mark the line of cut. From a convenient starting point within the cut out area, place the tip of the blade over that point with saw parallel to the line of cut. Slowing lower the saw until the bottom edge of the shoe rests on the workpiece. Start the saw and allow it to attain full speed. With the saw resting on the shoe, slowly let the saw forward to lower the blade onto the cut line. Continue this motion until the saw blade is perpendicular to the workpiece.



WARNING: Make sure the blade does not touch the workpiece until the saw reaches its max speed set on the speed Adjust Dial. Failure to comply could cause loss of control and result in serious injury.

Metal Cutting

When cutting metallic material with this tool, be sure to use a sharp blade designed for this purpose. We recommend lubricating the cutting surface with cutting oil to avoid heat buildup. Follow general cutting procedure on previous page. Do not force tool. Use only enough pressure to keep the saw cutting.

MAINTENANCE



- **WARNING.** Do not allow brake-fluids, gasoline, petroleum-based products penetrating oils, etc. Come in contact with plastic parts. They contain chemicals that can damage, weaken or destroy the housing, thus compromising the integrity of the double insulation.

- **Inspecting the mounting screws.**

Regularly inspect all mounting screws and ensure that they are properly tightened. Should any of the screws be loose, tighten them immediately. Failure to do so could result in serious injuries.

- **Maintenance of the motor.**

The motor unit winding is the very “heart “ of the power tool. Exercise due care to ensure the winding does not become damaged and/or wet with oil or water.

- **Inspection the carbon brushes**

The motor employs carbon brushes which are consumable parts. Since an excessively worn carbon brush could result in motor trouble, replace the carbon brush with an identical part when it becomes worn to or near the limit. In addition, always keep carbon brushes clean and ensure that they slide freely with in the brush holder



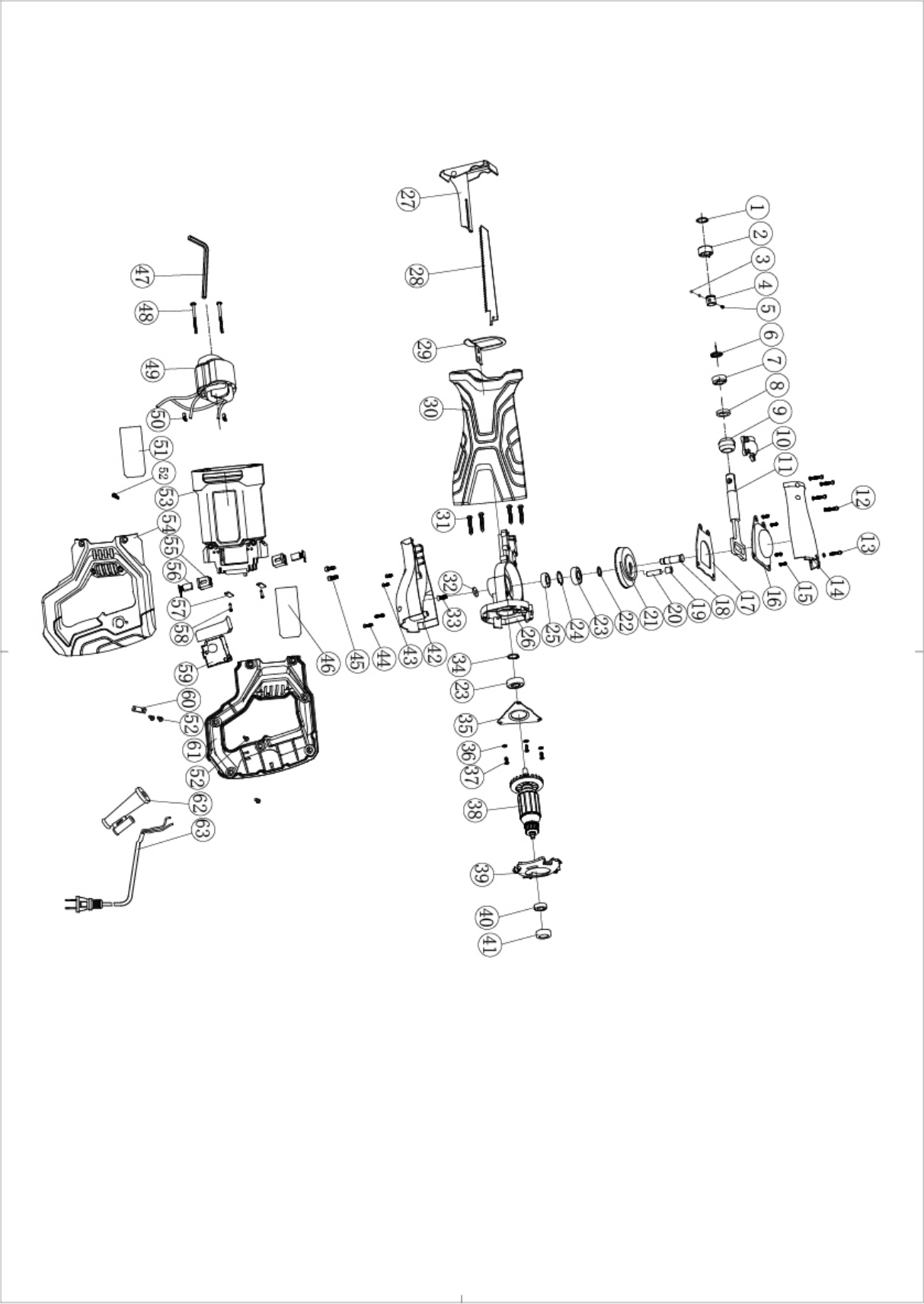
WARNING: A set of spare carton brush is included in this package for replacement purposes. The check and replacement of the brushes should only be performed by a qualified service technician using identical parts to ensure the integrity of double insulation.

To assure the safety of our customers, we strongly recommend against the consumers checking and changing the brushes.

NOTE: Under normal usage, the carbon brushes will last beyond the 90 day warranty period. Therefore, do not open the body housing within 90 days of purchase to inspect the brushes or the manufacturer warranty will void at that time, please see warranty section if a return is necessary.

NOTE: Please read “WARNING” or previous section regarding checking and changing of the carbon brushes.

EXPLODED VIEW



PARTS LIST

Item	Stock#	Description	Qty	Item	Stock#	Description	Qty
1	PS4010-001	Circlip for shaft 16	1	32	PS4010-032	Washer 6×14×1.5	1
2	PS4010-002	Outer ring	1	33	PS4010-033	Cross CSK screw M5x14	1
3	PS4010-003	Pin	1	34	PS4010-034	circlip for shaft 12	1
4	PS4010-004	Inner ring	1	35	PS4010-035	Bearing press plate	1
5	PS4010-005	Steel ball 5.2	2	36	PS4010-036	Washer 4	3
6	PS4010-006	Tension spring	1	37	PS4010-037	Cross screw M4x10	3
7	PS4010-007	Plastic ring	1	38	PS4010-038	Rotor	1
8	PS4010--008	Felt ring	1	39	PS4010-039	Air baffle plate	1
9	PS4010--009	Sliding bearing	1	40	PS4010-040	Bearing 608-2Z	1
10	PS4010--010	Ball press cover	1	41	PS4010-041	Bearing sleeve	1
11	PS4010--011	Reciprocating Lever	1	42	PS4010-042	Wire connector	1
12	PS4010--012	Screw M4x20	1	43	PS4010-043	Screw M5x14	2
13	PS4010--013	Screw M4x8	1	44	PS4010-044	Screw M5x20	2
14	PS4010-014	Gearing housing	1	45	PS4010-045	ScrewM5×14	2
15	PS4010-015	Screw M5x10	4	46	PS4010-046	Nameplate	1
16	PS4010-016	Cover plate	1	47	PS4010-047	Wrench 4 #	1
17	PS4010-017	Middle plate	1	48	PS4010-048	Screw ST4.2x60	2
18	PS4010-018	Gear spindle	1	49	PS4010-049	Stator	1
19	PS4010-019	Needle bearing7×14×12	1	50	PS4010-050	4.8 Elbow insert spring	2
20	PS4010-020	Pin	1	51	PS4010-051	Brand	1
21	PS4010-021	Gear	1	52	PS4010-052	Screw ST4.2x16	11
22	PS4010-022	Washer 12	1	53	PS4010-053	Housing	1
23	PS4010-023	Bearing 6201-2Z	2	54	PS4010-054	Left handle	1
24	PS4010-024	Circlip for shaft 26	1	55	PS4010-055	Brush holder	2
25	PS4010-025	Bearing 6000-2Z	1	56	PS4010-056	Carbon brush	2
26	PS4010-026	Gearing housing	1	57	PS4010-057	Brush holder pressing plate	2
27	PS4010-027	Shoe	1	58	PS4010-058	Screw ST2.9x10	2
28	PS4010-028	Saw blade	1	59	PS4010-059	Switch	1
29	PS4010-029	Baffle	1	60	PS4010-060	Cable pressing plate	1
30	PS4010-030	Rubber cover	1	61	PS4010-061	Right handle	1
31	PS4010-031	Screw ST4.2x28	4	62	PS4010-062	Cable sleeve	1
				63	PS4010-063	Cable and plug	1

TWO (2) YEARS LIMITED WARRANTY

Power Smart® is committed to building tools that are dependable for years. Our warranties are consistent with our commitment and dedication to quality.

TWO (2) YEARS LIMITED WARRANTY OF POWER SMART PRODUCTS FOR HOME USE.

Power Smart ("Seller") warrants to the original purchaser only, that all Power Smart consumer power tools will be free from defects in material or workmanship for a period of two (2) years from date of purchase. Ninety (90) days for all Power Smart Products, if the tool is used for professional or commercial use.

SELLER'S SOLE OBLIGATION AND YOUR EXCLUSIVE REMEDY under this Two (2) Years Limited Warranty and, to the extent permitted by law, any warranty or condition implied by law, shall be the repair or replacement of parts, without charge, which are defective in material or workmanship and which have not been misused, carelessly handled, or misrepaired by persons other than Seller or Authorized Service Center. To make a claim under this Limited Warranty, you must return the entire power tool product; transportation prepaid, to Power Smart Include a legible copy of the original receipt, which lists the date of purchase (month and year) and the name of the company purchased from.

THIS LIMITED WARRANTY DOES NOT APPLY TO ANY ACCESSORY ITEMS INCLUDED WITH THE TOOL SUCH AS CIRCULAR SAW BLADES OTHER RELATED ITEMS OR TO ANY REPLACEMENT PARTS LISTED UNDER MAINTENANCE.

ANY IMPLIED WARRANTIES SHALL BE LIMITED IN DURATION TO TWO (2) YEARS FROM DATE OF PURCHASE. SOME STATES IN THE U.S. AND SOME CANADIAN PROVINCES DO NOT ALLOW LIMITATIONS ON HOW LONG AN IMPLIED WARRANTY LASTS, SO THE ABOVE LIMITATION MAY NOT APPLY TO YOU.

IN NO EVENT SHALL SELLER BE LIABLE FOR ANY INCIDENTAL OR CONSEQUENTIAL DAMAGES (INCLUDING BUT NOT LIMITED TO LIABILITY FOR LOSS OF PROFITS) ARISING FROM THE SALE OR USE OF THIS PRODUCT. SOME STATES IN THE U.S. AND SOME CANADIAN PROVINCES DO NOT ALLOW THE EXCLUSION OR LIMITATION OF INCIDENTAL OR CONSEQUENTIAL DAMAGES, SO THE ABOVE LIMITATION OR EXCLUSION MAY NOT APPLY TO YOU.

THIS LIMITED WARRANTY GIVES YOU SPECIFIC LEGAL RIGHTS, AND YOU MAY ALSO HAVE OTHER RIGHTS WHICH VARY FROM STATE TO STATE IN THE U.S., PROVINCE TO PROVINCE IN CANADA AND FROM COUNTRY TO COUNTRY.

For questions / comments, technical assistance or repair parts –
Please call toll free at: 1-800-791-9458 (M-F 9am – 5pm EST)
Email: support@amerisuninc.com

SAVE YOUR RECEIPTS. THIS WARRANTY IS VOID WITHOUT THEM.