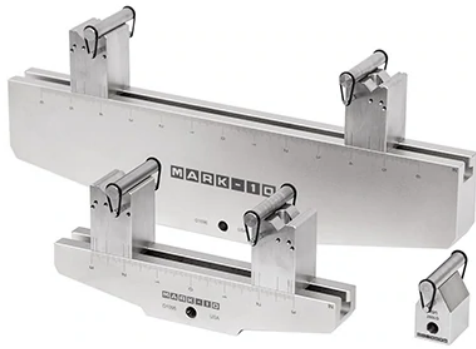


Mark-10 Bend Fixtures

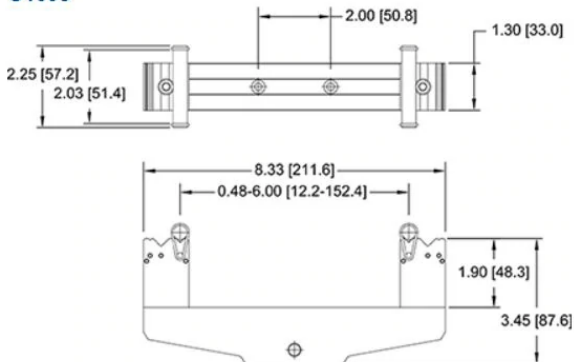


Bend fixtures designed for 3-point and 4-point bend testing of plastics, metals, ceramics, tubing, and many other materials. The fixtures conform to ASTM C393, C1161, D790, and related standards.

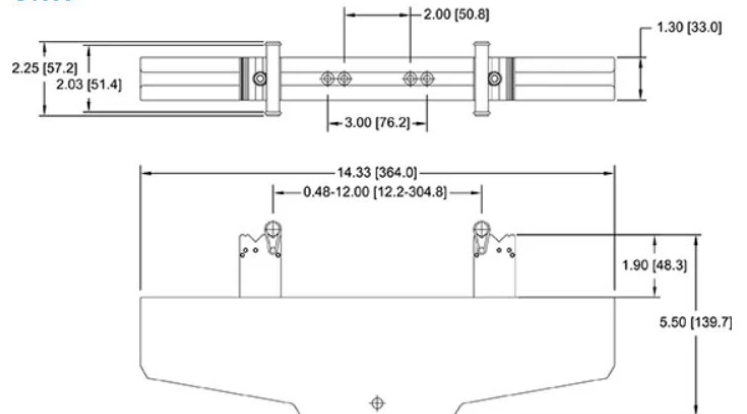
Two base sizes (G1095 and G1096) are available, along with an upper anvil (G1097). Use a base-anvil combination for 3-point bend testing or two bases for 4-point bend testing.

Model	Capacity lbF [kN]	Weight* lb [kg]	Housing material	Block material	Roller material	Includes
G1095	500 [2.5]	3.0 [1.3]	2024 Al	303 SS	416 SS, hardened	Screws for test stand mounting, two 10 mm dia. rollers and o-rings
G1096	2,000 [10]	7.1 [3.2]	2024 Al	303 SS	416 SS, hardened	Screws for test stand mounting, two 10 mm dia. rollers and o-rings
G1097	2,000 [10]	0.5 [0.2]	303 SS	-	416 SS, hardened	10 mm. dia. roller and o- rings

G1095



G1096



G1097

