



Series FS06 force sensors measure tension and compression forces. Designed to accommodate bulkier grips and fixtures, they are compatible with Series F test frame models up to 500 lbF / 2.2 kN.

With Plug & Test® technology, all configuration and calibration data is saved within the sensor, allowing it to be calibrated on the test frame or off-site with a Mark-10 indicator (optional adapter AC1083 required).

Ranges are available from 50 to 500 lbF [250 N to 2.5 kN].

Compatible with Models F105, F305, F505, and F505H.

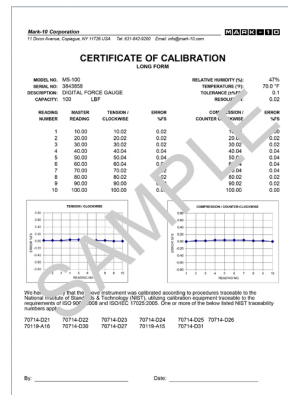
## Specifications

<b>Accuracy:</b>	± 0.15% of full scale + indicator or test frame
<b>Safe Overload:</b>	150% of full scale
<b>Weight:</b>	FS06-50 - FS06-200: 1.7 lb [0.8 kg] FS06-300 - FS06-500: 1.9 lb [0.9 kg]

## Features

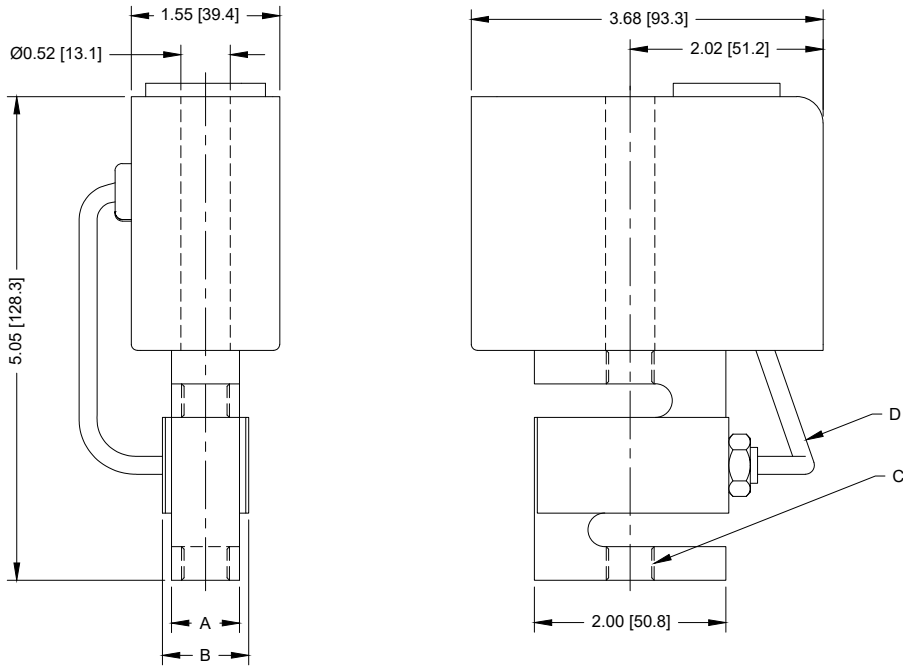


- Series FS06 sensors are suitable for bulkier grips and fixtures, such as the G1095 bend fixture and eye end adapter shown here.



- Included certificate of calibration contains 10 data points in each measuring direction.

## Dimensions in [mm]



Model No.	A	B	C	D
FS06-50				6 [152.4]
FS06-100	0.46 [11.7]	0.71 [18.0]	1/4-28 UNF	
FS06-200				
FS06-300	0.90 [22.6]	1.10 [27.9]	1/2-20 UNF	
FS06-500				

## In The Box

Series FS06 are shipped as shown below:

**FS06-50 - FS06-200**

- (1) Force Sensor
- (1) 1/4-28 x 3 3/4" Screw
- (1) 1/4" Washer
- (1) 1/4-28 Bushing

**FS06-300 - FS06-500**

- (1) Force Sensor
- (1) 1/2-20 x 3 3/4" Screw
- (1) 1/2" Washer

## Capacity x Resolution

Model No.	lbF	ozF	gF	kgF	N	kN	mN
FS06-50	50 x 0.02	800 x 0.5	25000 x 10	25 x 0.01	250 x 0.1	-	-
FS06-100	100 x 0.05	1600 x 1	50000 x 20	50 x 0.02	500 x 0.2	-	-
FS06-200	200 x 0.1	3200 x 2	-	100 x 0.05	1000 x 0.5	1 x 0.0005	-
FS06-300	300 x 0.1	4800 x 2	-	150 x 0.05	1500 x 0.5	1.5 x 0.0005	-
FS06-500	500 x 0.2	8000 x 5	-	250 x 0.1	2500 x 1	2.5 x 0.001	-