



# AVANTGARDE

RETRACTABLE PERGOLA SYSTEM

## RETRACTABLE PERGOLA SYSTEM

AVANTGARDE	
Max. Projection (P):	32'-10" / 16'-5"
Max. Width With a Single Motor (L):	16'-5" / 32'-10"
Max. Rail Distance:	13'-1 1/2"
Min. Slope:	5°
Max. Slope:	15°

\*\*For single fabric and single motor max. system size can be; 32'-10" / 16'-5" or 16'-5" / 32'-10"

- Pillar Profile: 5 3/8"x5 3/8"
- Gutter Profile: 5 3/8"x6 3/4"
- Runner Profile: 5 3/8"x6 1/4"
- Light Options: Tube Led, Spot Led (Remote Controlled)
- Layout of lighting;  
for sizes small than 8'-2" 2 light in each row,  
for sizes large than 8'-2" should be 3 light in each row.
- For motor;  
Somfy Altus LT60 685 RTS (85Nm) up to 323-430 ft<sup>2</sup>  
Somfy Altus LT60 6100 RTS (120Nm) for other sizes  
Somfy Altus LT60 6100R2 CMO is used as the manual motor.
- The system can be remote-controlled.
- Fabric Type; Serge Ferrari Opaque 622 or W96
- It has a quick and easy on-and-off feature with Manual Cranking.
- There is a double fabric feature on a single rail.
- Gable roof options is a available.
- Colour options are available.  
(Pulver/Ral Colour Powder, Wood Effect)
- The composite panel is sent in the same color as the body if it is available, otherwise in the same color as the fabric. Drawings include notes. If a different color is requested, it must be mentioned specifically.
- Under warranty for 5 years.
- Stainless accessory are used.
- A remote-controlled heater can be placed in the system.
- 4"x5 3/8" Side Beam is used.
- Cross Beam size to be used for Sukkah is;  
Up to 19'-8" 4"x4",  
After 23' 5 3/8",  
Between 19'-8" and 23' 4"x4 3/4"
- Resistant to adverse weather and fire.
- It can be mounted to the building using a 2"x6"x1/8" Steel Profile.
- It can be mounted to concrete, steel, wooden floor, and wall. Also it can be mounted independently of the structure with additional profiles. (Free-Standing)
- System weight; 4,7 lb/ft<sup>2</sup>

System Dimension Standards;

		WIDTH (L)																
		2 Runner				3 Runner						4 Runner						
inch		8'-2"	9'-10"	11'-6"	13'-1"	14'-9"	16'-5"	18'1"	19'-8"	21'-4"	23'	24'-8"	26'4"	27'-11"	29'-6"	31'-2"	32'-10"	34'-5"
PROJECTION (P)	8'-2"																	
	9'-10"																	
	11'-6"																	
	13'-1"																	
	14'-9"																	
	16'-5"																	
	18'1"																	
	19'-8"																	
	21'-4"																	
	23'																	
	24'-8"																	
	26'4"																	
	27'-11"																	
	29'-6"																	
	31'-2"																	
	32'-10"																	

**SINGLE FABRIC, SINGLE MOTOR**

**DOUBLE FABRIC, DOUBLE MOTOR**

System > 538 ft<sup>2</sup> = Double Motor





# ELEGANT

RETRACTABLE PERGOLA SYSTEM





## RETRACTABLE PERGOLA SYSTEM

ELEGANT	
Max. Projection (P):	21'-4"
Max. Width With a Single motor (L):	26'-4" (3 rail)
Max. Rail Distance:	13'-1"
Min. Slope:	5°
Max. Slope:	15°

\*\*For single fabric and single motor max. system size can be; 21'-4"x26'-4"

- Pillar Profile: 4"x5 3/8"
- Gutter Profile: 5 3/8"x6 3/4"
- Runner Profile: 4"x5 1/2"
- Light Options: Tube Led, Spot Led (Remote Controlled)
- Layout of lighting;  
for sizes small than 8'-2" 2 light in each row,  
for sizes large than 8'-2" should be 3 light in each row.
- For motor;  
Somfy Altus LT60 685 RTS (85Nm) up to 323-430 ft<sup>2</sup>  
Somfy Altus LT60 6100 RTS (120Nm) for other sizes  
Somfy Altus LT60 6100R2 CMO is used as the manual motor.
- The system can be remote-controlled.
- Fabric Type; Serge Ferrari Opaque 622 or W96
- It has a quick and easy on-and-off feature with Manual Cranking
- In the case of double fabric system, two separate rails are used in the middle.
- Arc model option is available. (Max Opening: 16'-5")
- Gable roof options is a available.
- Colour options are available.  
(Pulver/Ral Colour Powder, Wood Effect)
- The composite panel is sent in the same color as the body if it is available, otherwise in the same color as the fabric. Drawings include notes. If a different color is requested, it must be mentioned specifically.
- Under warranty for 5 years.
- Stainless accessory are used.
- A remote-controlled heater can be placed in the system.
- 4"x5 3/8" Side Beam is used.
- Cross Beam size to be used for Sukkah is;  
Up to 19'-8" 4"x4".
- Resistant to adverse weather and fire.
- It can be mounted to the building using a 2"x6"x1/8" Steel Profile.
- It can be mounted to concrete, steel, wooden floor, and wall. Also it can be mounted independently of the structure with additional profiles. (Free-Standing)
- System weight; 4 lb/ft<sup>2</sup>

System Dimension Standards;

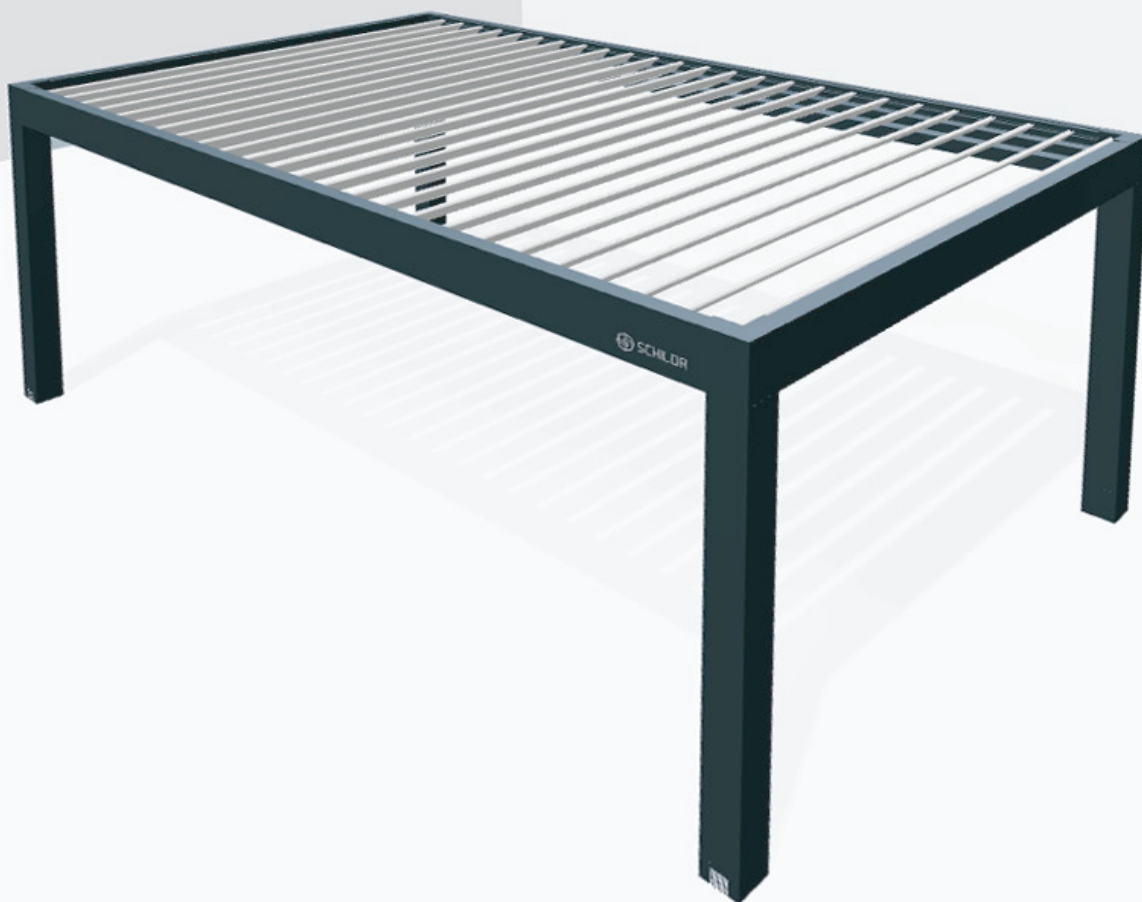
		WIDTH (L)																
		2 Runner				3 Runner								4 Runner				
inch		8'-2"	9'-10"	11'-6"	13'-1"	14'-9"	16'-5"	18'1"	19'-8"	21'-4"	23'	24'-8"	26'4"	27'-11"	29'-6"	31'-2"	32'-10"	34'-5"
PROJECTION (P)	8'-2"																	
	9'-10"																	
	11'-6"																	
	13'-1"																	
	14'-9"																	
	16'-5"																	
	18'1"																	
	19'-8"																	
	21'-4"																	

**SINGLE FABRIC, SINGLE MOTOR**

**DOUBLE FABRIC, DOUBLE MOTOR, MIDDLE DOUBLE RAIL**

System > 538 ft<sup>2</sup> = Double Motor





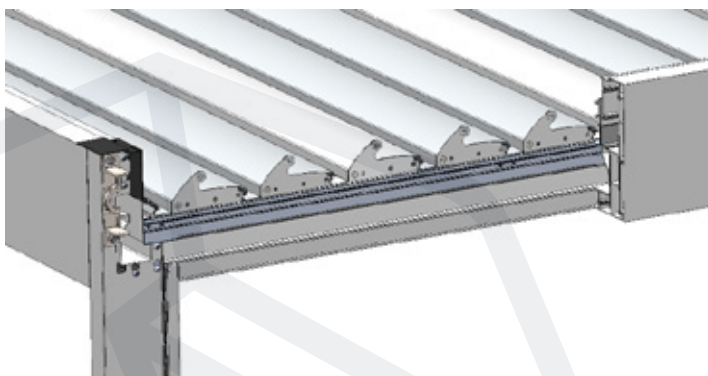
# CABBANNA

ROTATABLE LOUVERED ROOF

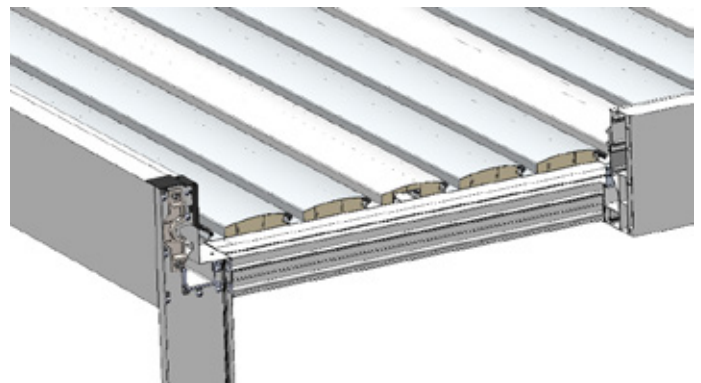
## ROTATABLE LOUVERED ROOF

CABBANA	
Max. Width (Single System)(L):	11'-6"
Max. Projection (Single System)(P):	19'-10"
Max. Width (Double Sytem)(L):	23'
Max. Projection (Double Sytem)(P):	39'-1"

- Pillar Profile: 6 3/4"x6 3/4"
- Gutter Profile: 5 1/4"x11 1/4"
- Lamel Profile: 8"
- A single system uses two Timotion TA16 (24V) Piston Motors.
- The system can be remote-controlled.
- Cover glasses can be insulated using Pu-Foam filler.
- Light Options: Tube Led, Spot Led (Remote Controlled)
- Colour options are available.  
(Pulver/Ral Colour Powder, Wood Effect)
- The position of the motor and the opening direction of lamel are inversely proportional to each other.
- Right or left opening option is available.
- Under warranty for 5 years.
- All-season.
- Stainless accessory are used.
- A remote-controlled heater can be placed in the system.
- A 2"x6" aluminum profile is used for the fan connection.
- Resistant to adverse weather and fire.
- It can be mounted to the structure without any additional material.
- It can be mounted to concrete, steel, wooden floor, and wall. Wall mouting is applied using an L bracket.
- Besides, thanks to its leg profile, it can be mounted independently of the building (Free Standing).
- System weight; 6 lb/ft<sup>2</sup>



Lamel and Gutter



Pu-Foam Filled Lamel and Gutter

System Dimension Standards;

		WIDTH (L)							
	inch	6'-7"	7'-4"	8'-2"	9'	9'-10"	10'-8"	11'-6"	Lamel (Piece)
PROJECTION (P)	7'-4"								10
	8"								11
	8'-8"								12
	9'-4"								13
	10'								14
	10'-8"								15
	11'-3"								16
	11-11'								17
	12'-7"								18
	13'-3"								19
	13'-11"								20
	14'-7"								21
	15'-3"								22
	15'-11"								23
	16'-6"								24
	17'-2"								25
	17'-10"								26
	18'-6"								27
19'-2"								28	
19'-10"								29	





# PANORA

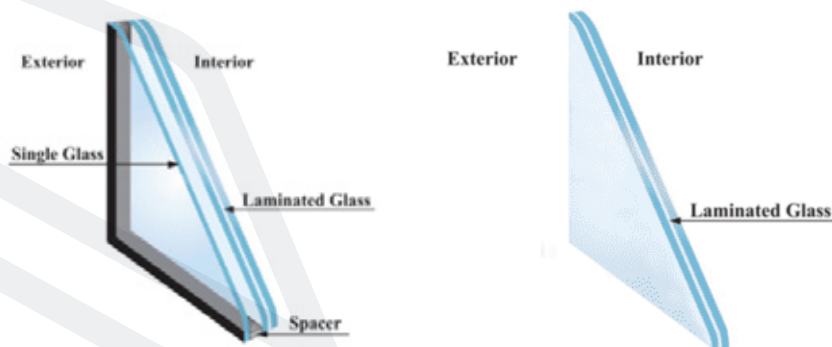
FIXED GLASS ROOF SYSTEM  
(Without Slope)

## FIXED GLASS ROOF SYSTEM (Without Slope)

3/16" + 3/16" Temp. Lam. Glass (PANORA) / 1/4" Solar Low-E + 5/8" AS+ 5/32" + 5/32" Tempered Laminated Glass (PANORA PLUS)			
Max. Projection (P): (Panora)	13'-1"	Max.Width (L): (Panora)	19'-8"
Max. Projection (P): (Panora Plus)	11'-6"	Max.Width (L): (Panora Plus)	19'-8"
Max. Projection (P):	14'-9"	Max.Width (L):	26'-4"
Vertical Profile Interval Dimension:	2'-3 1/2" / 4'-7"	Steel-Free Mullion Interior Max. Projection (P):	13'-1"
Standard Slope:	1 1/2"	Steel Mullion Interior Max. Projection (P):	14'-9"

\*\* For a single system of a max. of 14'-9"x26'-4", the middle leg and the inside of the strut must be steel.

- Pillar Profile: 6 3/4"x6 3/4"
- Mullion Profile: 2 7/8"x4 3/8"
- Gutter Profile: 5 1/4"x11 1/4"
- Omega Joint Profile: 3/4"x2 1/2"
- Double glass option has **Solar Low-E** feature.
- Polycarbonate can also be made.
- Light Options: Tube Led, Spot Led, Perimeter Led (RGB)(Remote Controlled)
- To mullion perimeter led can also be made.
- Colour options are available.  
(Pulver/Ral Colour Powder, Wood Effect)
- Under warranty for 5 years.
- All-season.
- Stainless accessory are used.
- A remote-controlled heater can be placed in the system.
- A 2"x6" aluminum profile is used for the fan connection.
- When the opening exceeds 9'-10", the glass should be divided by adding an omega joint profile.
- Resistant to adverse weather and fire.
- It can be mounted to the structure without any additional material.
- It can be mounted to concrete, steel, wooden floor, and wall. Wall mouting is applied using an L bracket.
- Besides, thanks to its leg profile, it can be mounted independently of the building (Free Standing).
- System weight:  
For double glass; 11 lb/ft<sup>2</sup>, For single glass; 9,1 lb/ft<sup>2</sup>



1/4" Solar Low-E + 5/8" AS + 5/32" + 5/32" Temp. Lam. / 3/16" + 3/16" Temp. Lam.

System Dimension Standards;

		WIDTH (L)							
		4 Pillar							
inch	8'-2"	9'-10"	11'-6"	13'-1"	14'-9"	16'-5"	18'-1"	19'-8"	
PROJECTION (P)	8'-2"								
	9'-10"								
	11'-6"								
	13'-1"								
	14'-9"								
	3/16" + 3/16" Temp. Lam.								
	8'-2"								
	9'-10"								
	11'-6"								
	14'-9"								
1/4" Solar Low-E + 5/8" AS + 5/32" + 5/32" Temp. Lam.									

**BETWEEN MULLION 1 1/2"x3 1/4"x1/8" STEEL**







# URBAN

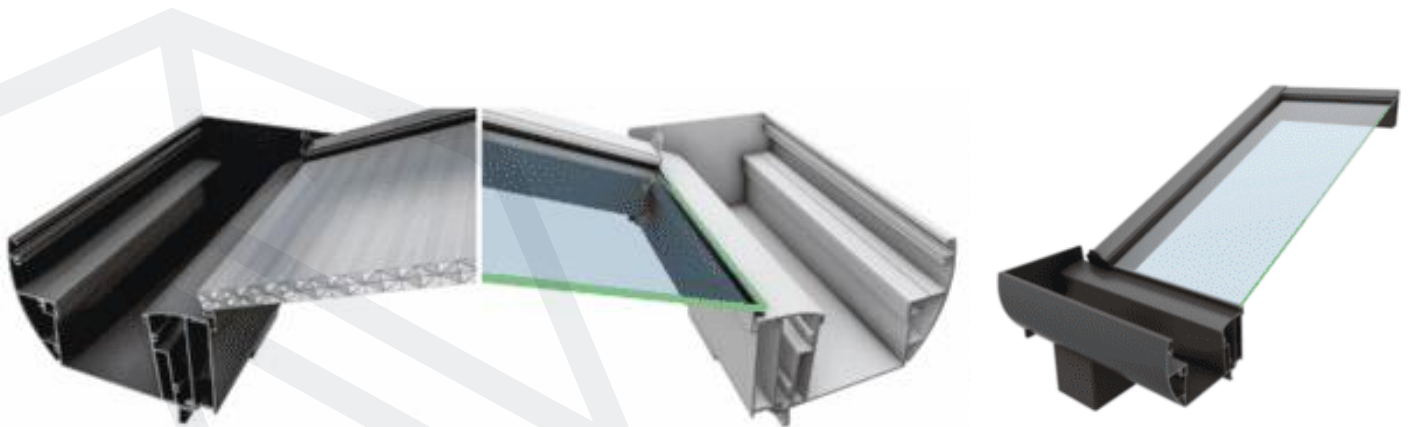
FIXED GLASS ROOF SYSTEM

## FIXED GLASS ROOF SYSTEM

5/8" Polycarbonate			
Steel Million Interior Max. Projection (P):	14'-9"	Steel-Free Million Interior Max. Projection (P):	11'-6"
Max. Slope:	25°	Min.Slope:	7°
Düşey Profil Ara Ölçüsü:	2'3'-7"	Max. Distance Between Steel Pillar in Gutter (L):	14'-9"
		Max. Distance Between Steel-Free Pillar in Gutter (L):	13'-1"

3/16" + 3 1/16" Tempered Laminated Glass			
Steel Million Interior Max. Projection (P):	11'-6"	Steel-Free Million Interior Max. Projection (P):	9'-10"
Max. Slope:	25°	Min.Slope:	7°
Düşey Profil Ara Ölçüsü:	2'3'-4"	Max. Distance Between Steel Pillar in Gutter (L):	13'-1"
		Max. Distance Between Steel-Free Pillar in Gutter (L):	11'-6"

- Pillar Profile: 4"x4 3/4"
- Mullion Profile: 2 1/4"x3 3/4"
- Gutter Profile: 4 1/4"x6"
- Light Options: Tube Led, Spot Led (Remote Controlled)
- Colour options are available. (Pulver/Ral Colour Powder, Wood Effect)
- Under warranty for 5 years.
- Resistant to adverse weather and fire.
- Stainless accessory are used.
- A remote-controlled heater can be placed in the system.
- 4"x4" Side Beam is used.
- It can be mounted to the structure without any additional material.
- It can be mounted to concrete, steel, wooden floor, and wall. Also it can be mounted independently of the structure with additional profiles. (Free-Standing)
- It is the most affordable one among our glass-ceiling winter gardens.
- System weight:  
For polycarbonate; 3,5 lb/ft<sup>2</sup>, For glass; 8 lb/ft<sup>2</sup>



POLYCARBONATE-GLASS

System Dimension Standards;

		WIDTH (L)													
		2 Pillar				3 Pillar						3-4 Pillar			
		3 Panel	4 Panel	5 Panel	6 Panel	7 Panel	8 Panel	9 Panel	10 Panel						
inch	8'-2"	9'-10"	11'-6"	13'-1"	14'-9"	16'-5"	18'1"	19'-8"	21'-4"	23'	24'-8"	26'4"	27'-11"	29'-6"	
PROJECTION (P)	8'-2"												4 Pillar	4 Pillar	
	9'												4 Pillar	4 Pillar	
	9'-10"												4 Pillar	4 Pillar	
	10'10"												4 Pillar	4 Pillar	
	11'-6"												4 Pillar	4 Pillar	
	3/16" + 3/16" Temp. Lam.														
	8'-2"													3 Pillar	3 Pillar
	9'													3 Pillar	3 Pillar
	9'-10"													3 Pillar	3 Pillar
	10'10"													3 Pillar	3 Pillar
	11'-6"													3 Pillar	3 Pillar
	12'-3"													3 Pillar	3 Pillar
	13'-1"													3 Pillar	3 Pillar
	14'-9"													3 Pillar	3 Pillar
5/8" Polycarbonate															

BETWEEN GUTTER 3/8"x4" STEEL

BETWEEN MULLION 1 1/2"x3 1/4"x1/8" STEEL

BETWEEN GUTTER 3/8"x4" STEEL AND BETWEEN MULLION 1 1/2"x3 1/4"x1/8" STEEL





# POINT

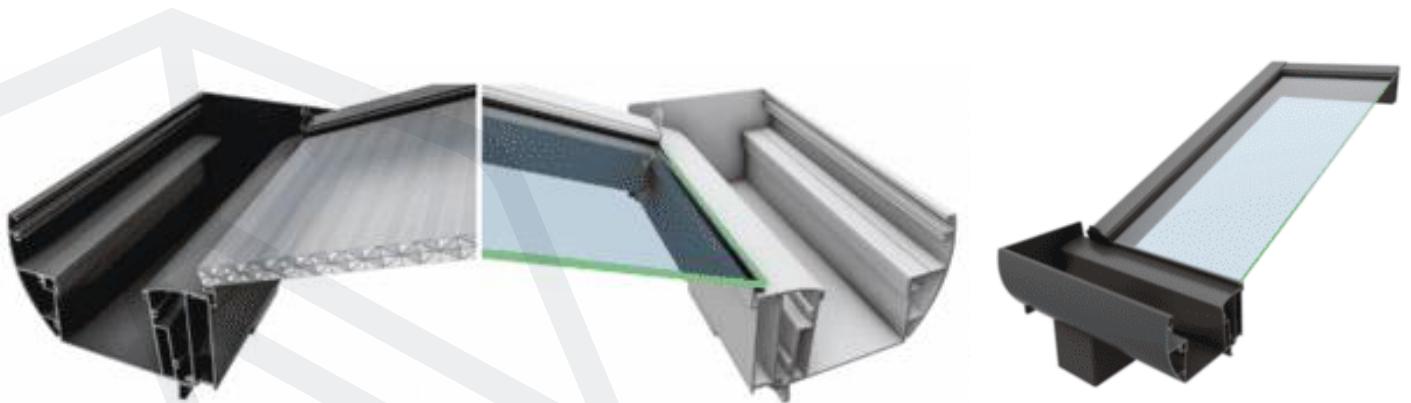
PATIO COVER SYSTEM

## PATIO COVER SYSTEM

5/8" Polycarbonate			
Steel Mullion Interior Max. Projection (P):	14'-9"	Steel-Free Mullion Interior Max. Projection (P):	11'-6"
Max. Slope:	25°	Min.Slope:	7°
Düsey Profil Ara Ölçüsü:	2'3'-7"	Max. Distance Between Steel Pillar in Gutter (L):	14'-9"
		Max. Distance Between Steel-Free Pillar in Gutter (L):	13'-1"

3/16" + 3 1/16" Tempered Laminated Glass			
Steel Mullion Interior Max. Projection (P):	11'-6"	Steel-Free Mullion Interior Max. Projection (P):	9'-10"
Max. Slope:	25°	Min.Slope:	7°
Düsey Profil Ara Ölçüsü:	2'3'-4"	Max. Distance Between Steel Pillar in Gutter (L):	13'-1"
		Max. Distance Between Steel-Free Pillar in Gutter (L):	11'-6"

- Pillar Profile: 4"x4 3/4"
- Mullion Profile: 2 1/4"x3 3/4"
- Gutter Profile: 4 1/4"x6"
- Light Options: Tube Led, Spot Led (Remote Controlled)
- Colour options are available. (Pulver/Ral Colour Powder, Wood Effect)
- Under warranty for 5 years.
- Resistant to adverse weather and fire.
- Stainless accessory are used.
- A remote-controlled heater can be placed in the system.
- It can be mounted to the structure without any additional material.
- It can be mounted to concrete, steel, wooden floor, and wall. Also it can be mounted independently of the structure with additional profiles. (Free-Standing)
- System weight:  
For polycarbonate; 3,5 lb/ft<sup>2</sup>, For glass; 8 lb/ft<sup>2</sup>



POLYCARBONATE-GLASS

System Dimension Standards;

		WIDTH (L)													
		2 Pillar				3 Pillar						3-4 Pillar			
		3 Panel		4 Panel		5 Panel		6 Panel		7 Panel		8 Panel		9 Panel	
inch	8'-2"	9'-10"	11'-6"	13'-1"	14'-9"	16'-5"	18'1"	19'-8"	21'-4"	23'	24'-8"	26'4"	27'-11"	29'-6"	
PROJECTION (P)	8'-2"												4 Pillar	4 Pillar	
	9'												4 Pillar	4 Pillar	
	9'-10"												4 Pillar	4 Pillar	
	10'10"												4 Pillar	4 Pillar	
	11'-6"												4 Pillar	4 Pillar	
	3/16" + 3/16" Temp. Lam.														
	8'-2"													3 Pillar	3 Pillar
	9'													3 Pillar	3 Pillar
	9'-10"													3 Pillar	3 Pillar
	10'10"													3 Pillar	3 Pillar
	11'-6"													3 Pillar	3 Pillar
	12'-3"													3 Pillar	3 Pillar
	13'-1"													3 Pillar	3 Pillar
	14'-9"													3 Pillar	3 Pillar
5/8" Polycarbonate															

BETWEEN GUTTER 3/8"x4" STEEL

BETWEEN MULLION 1 1/2"x3 1/4"x1/8" STEEL

BETWEEN GUTTER 3/8"x4" STEEL AND BETWEEN MULLION 1 1/2"x3 1/4"x1/8" STEEL





# GRANDE

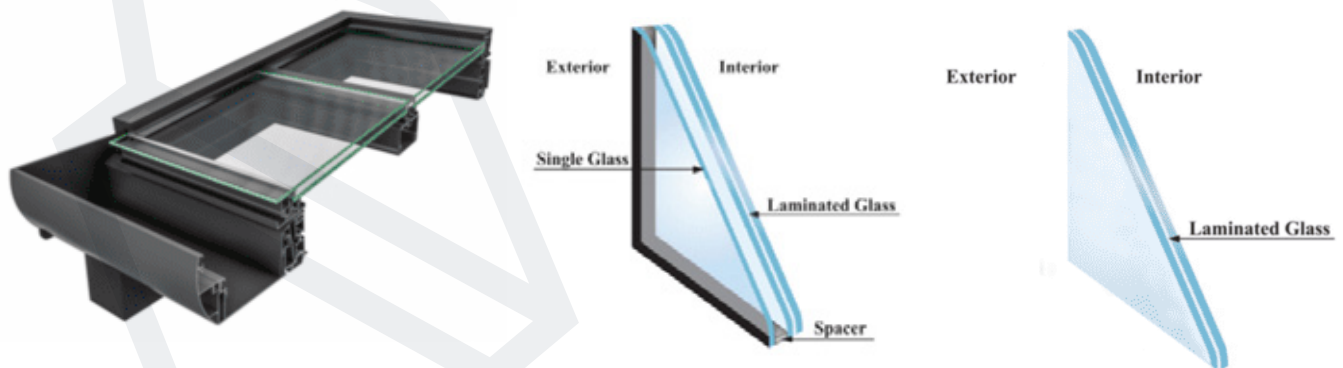
FIXED GLASS ROOF SYSTEM

## FIXED GLASS ROOF SYSTEM

5+5 mm Tempered Laminated Glass			
Steel Mullion Interior Max. Projection (P):	14'-9"	Steel-Free Mullion Interior Max. Projection (P):	11'-6"
Max. Slope:	18°	Min. Slope:	5°
Vertical Profile Interval Dimension	2'-3 1/2" / 4'-7"	Max. Distance Between Steel Pillar in Gutter (L):	14'-9"
		Max. Distance Between Steel-Free Pillar in Gutter (L):	11'-6"

1/4" Solar Low-E +5/8" AS+ 5/32"+5/32" Tempered Laminated Glass			
Steel Mullion Interior Max. Projection (P):	14'-9"	Steel-Free Mullion Interior Max. Projection (P):	9'-10"
Max. Slope:	18°	Min. Slope:	5°
Vertical Profile Interval Dimension:	2'-3 1/2" / 4'-7"	Max. Distance Between Steel Pillar in Gutter (L):	13'-1"
		Max. Distance Between Steel-Free Pillar in Gutter (L):	9'-10"

- Pillar Profile: 5"x7"
- Mullion Profile: 2 3/4"x3 1/2"
- Gutter Profile: 4 1/2"x5 3/4"
- Double glass option has **Solar Low-E** feature.
- Polycarbonate can also be made.
- Light Options: Tube Led, Spot Led (Remote Controlled)
- Colour options are available. (Pulver/Ral Colour Powder, Wood Effect)
- Under warranty for 5 years.
- All-season.
- Stainless accessory are used.
- A remote-controlled heater can be placed in the system.
- 4"x4 3/4" Side Beam is used.
- Resistant to adverse weather and fire.
- It can be mounted to the structure without any additional material.
- It can be mounted to concrete, steel, wooden floor, and wall. Also it can be mounted independently of the structure with additional profiles. (Free-Standing)
- System weight:  
For double glass; 11 lb/ft<sup>2</sup>, For single glass; 9 lb/ft<sup>2</sup>



1/4" Solar Low-E + 5/8" AS + 5/32" + 5/32" Temp. Lam. / 3/16" + 3/16" Temp. Lam.



System Dimension Standards;

		WIDTH (L)														
		2 Pillar				3 Pillar								4 Pillar		
inch		8'-2"	9'-10"	11'-6"	13'-1"	14'-9"	16'-5"	18'1"	19'-8"	21'-4"	23'	24'-8"	26'4"	27'-11"	29'-6"	
PROJECTION (P)	8'-2"															
	9'-10"															
	11'-6"															
	13'-1"															
	14'-9"															
	3/16" + 3/16" Temp. Lam.															
	8'-2"															
	9'-10"															
	11'-6"															
	13'-1"															
	14'-9"															
	1/4" Solar Low-E + 5/8" AS + 5/32" + 5/32" Temp. Lam.															
<b>BETWEEN GUTTER 1 1/2"x3 1/4"x1/8" STEEL</b>				<b>BETWEEN MULLION 1 1/2"x3 1/4"x1/8" STEEL</b>								<b>BETWEEN GUTTER AND MULLION 1 1/2"x3 1/4"x1/8" STEEL</b>				

\*\*For a double-glazed system, steel with a wall thickness of 3/16" should be used inside the pillar beyond 13'-1".





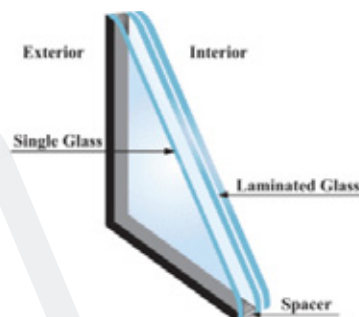
# DYNAMIC

RETRACTABLE GLASS ROOF SYSTEM

## RETRACTABLE GLASS ROOF SYSTEM

1/4" Solar Low-E + 5/8" AS + 5/32" + 5/32" Temp. Lam			
Steel Mullion Interior Max. Projection (P):	14'-9"	Steel-Free Mullion Interior Max. Projection (P):	9'-10"
Max. Slope:	10°	Min. Slope:	5°
Max. Distance Between Steel Pillar in Gutter (L):	13'-1"	Max. Distance Between Steel-Free Pillar in Gutter (L):	11'-6"
Vertical Profile Interval Dimension (Min/Max. Glass Dimension):	3'-7" / 4'-11"		

- Pillar Profile: 5"x7"
- Mullion Profile: 2 3/4"x3 1/2"
- Gutter Profile: 4 1/2"x5 3/4"
- Rail Profile: 2"x6"
- Wing Profile: 1 1/2"x1 3/4"
- Somfy Altus LT60 6100 RTS (120Nm) motor is used.
- The system can be remote-controlled.
- Double glass option has **Solar Low-E** feature.
- Light Options: Tube Led, Spot Led (Remote Controlled)
- Colour options are available. (Pulver/Ral Colour Powder, Wood Effect)
- Under warranty for 5 years.
- All-season.
- Stainless accessory are used.
- A remote-controlled heater can be placed in the system.
- 4"x4 3/4" Side Beam is used.
- Resistant to adverse weather and fire.
- It can be mounted to the structure without any additional material.
- It can be mounted to concrete, steel, wooden floor, and wall. Also it can be mounted independently of the structure with additional profiles. (Free-Standing)
- System weight; 13 lb/ft<sup>2</sup>



1/4" Solar Low-E + 5/8" AS + 5/32" + 5/32" Temp. Lam

System Dimension Standards;

		WIDTH (L)												
		2 Pillar			3 Pillar							4 Pillar		
		2 Panel		3 Panel		4 Panel			5 Panel		6 Panel		7 Panel	
		inch	9'-10"	11'-6"	13'-1"	14'-9"	16'-5"	18'1"	20'-5"	20'-6"	23'	24'-6"	26'-4"	28'-6"
PROJECTION (P)	8'-2"	1	1	2	2	2	2	2	3	3	3	3	3	4
	9'-10"	1	1	2	2	2	2	2	3	3	3	3	3	4
	11'-6"	1	2	2	2	2	2	2	3	3	3	3	3	4
	13'-1"	2	2	3	3	4	4	4	5	5	5	6	6	7
	14'-9"	2	2	3	3	4	4	4	5	5	5	6	6	7
1/4" Solar Low-E + 5/8" AS + 5/32" + 5/32" Temp. Lam														

\*\*The numbers in the box indicate the number of the motors of the system whose projection and width are specified.

<b>BETWEEN GUTTER 1 1/2"x3 1/4"x1/8" STEEL</b>	<b>BETWEEN MULLION 1 1/2"x3 1/4"x1/8" STEEL</b>	<b>BETWEEN GUTTER AND MULLION 1 1/2"x3 1/4"x1/8" STEEL</b>
--	---	--

\*\*Steel with a wall thickness of 3/16" should be used inside the gutter beyond 11'-6" 1/8" steel between 11'-6"/13'-1" and 3/16" steel between 13'-1"/14'-9" should be used in the mullion.





# ROOMY

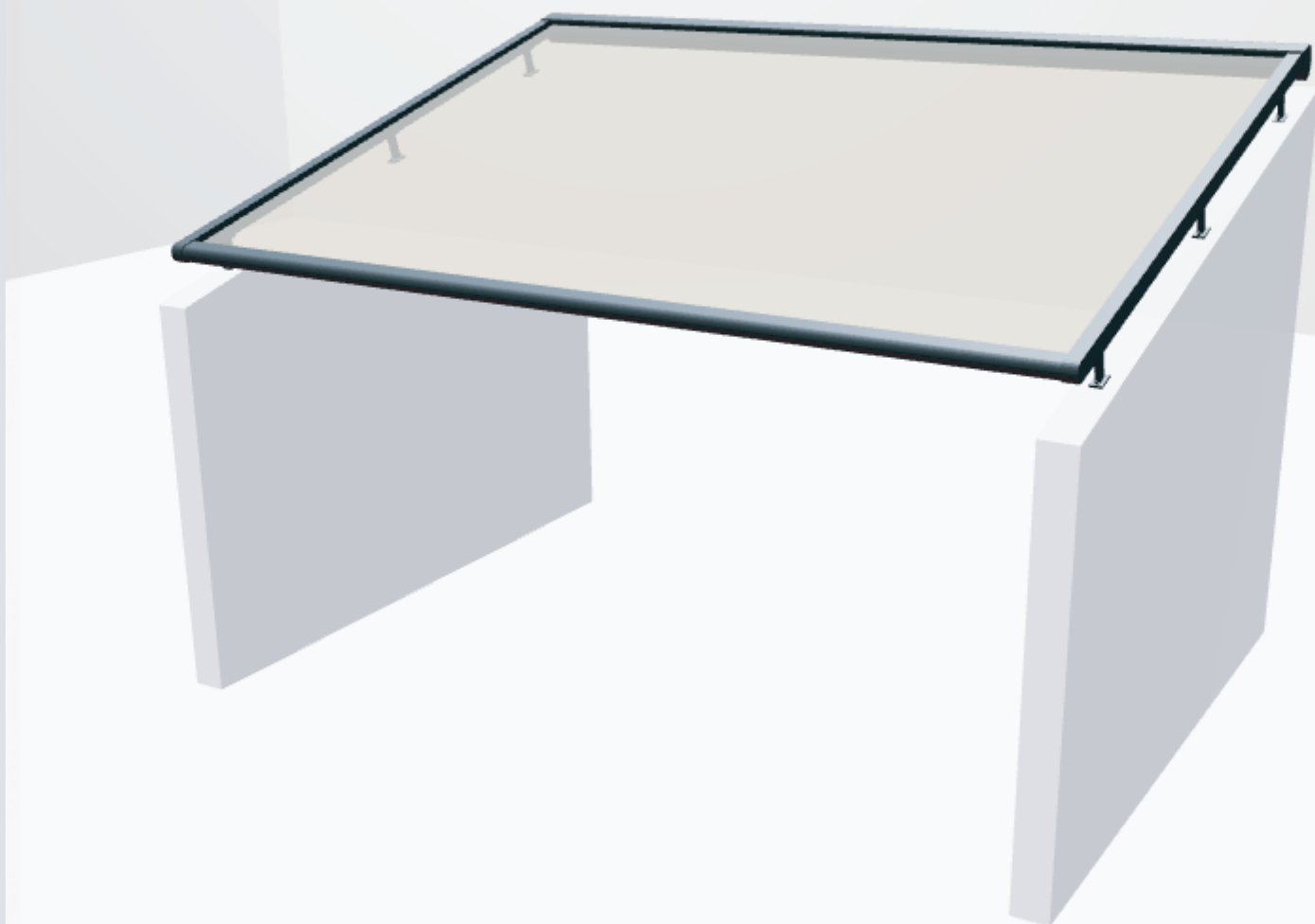
GABLE ROOF SYSTEM

## GABLE ROOF SYSTEM

1/4" Solar Low-E +5/8" AS+ 5/32" + 5/32" / 3/16" + 3/16" Tempered Laminated / 5/8" Polycarbonate	
Steel Million Interior Max. System Dimension:	14'-9" / 14'-9" (4 pillar- Excluding Middle Carrier)
Steel-Free Million Interior Max. System Dimension:	9'-10" / 9'-10" (4 pillar- Excluding Middle Carrier)
Max. Slope:	18°
Min. Slope:	5°

- All curved glass ceiling systems (Grande, Urban, Dynamic) can be made using the Roomy model. (The opening and width values vary according to the selected system. The standards of the system applied are applicable.)
- All glass combinations can be applied according to the standards of the selected system.
- Light Options: Tube Led, Spot Led  
(Remote Controlled)
- Colour options are available.  
(Pulver/Ral Colour Powder, Wood Effect)
- Under warranty for 5 years.
- All-season.
- Stainless accessory are used.
- A remote-controlled heater can be placed in the system.
- Resistant to adverse weather and fire.
- It can be mounted to the structure without any additional material.
- It can be mounted to concrete, steel, wooden floor, and wall.
- It can be independent of the structure since its middle joint is provided with steel profiles. (Free-Standing)
- System weight; depends on with which system you are using. Can be calculated from the system weight of the system made.





# CAPELLA

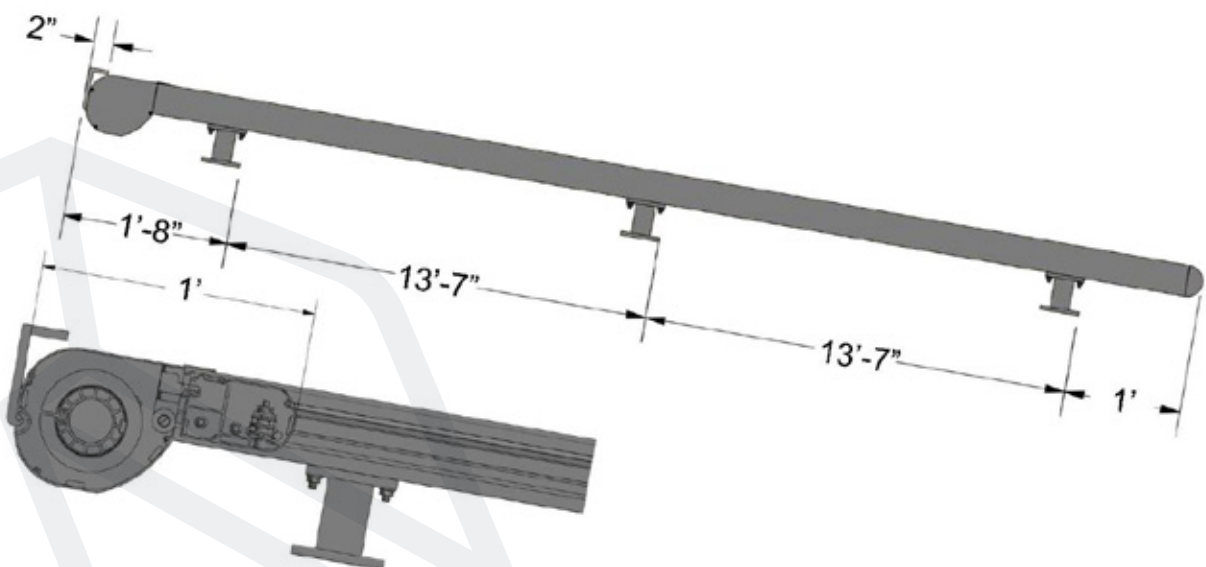
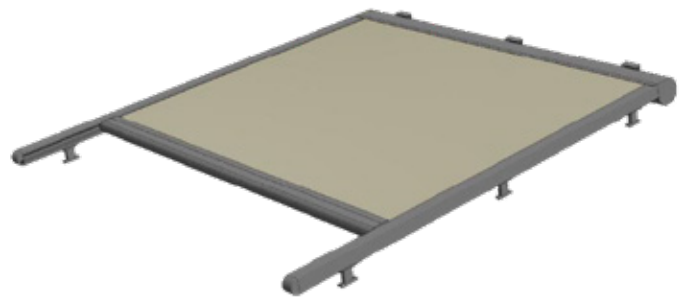
SKYLIGHT BLINDS SYSTEM  
(For Outside)

## SKYLIGHT BLINDS SYSTEM (FOR OUTSIDE)

CAPELLA	
For Seamless Fabric Max. Projection(P):	8'-10" / 19'-8"
For Seamless Fabric Max. Width(L):	19'-8" / 8'-10"
Max. Rail Range:	19'-8"
Min. Slope:	5°
Max. Slope:	20°

\*\* For seamless fabric and single motor, the max system size can be; 8'-10" / 19'-8" or 19'-8" / 8'-10"

- Pillar Profile: 1 1/4"x4"x4 1/16"
- Runner Profile: 2 1/2"x3 1/4"
- Motor Box: 6"x6 3/4"
- Somfy Altus RT50 530 RTS (30Nm) Motor is used.
- The system can be remote-controlled.
- Fabric Type; Serge Ferrari Soltis 92 or 96
- Colour options are available.  
(Pulver/Ral Colour Powder, Wood Effect)
- Under warranty for 5 years.
- Stainless accessory are used.
- Resistant to adverse weather and fire.
- It is an outdoor system.
- Can be mounted on all of our glass-ceiling systems
- System weight; 2 lb/ft<sup>2</sup>





System Dimension Standards;

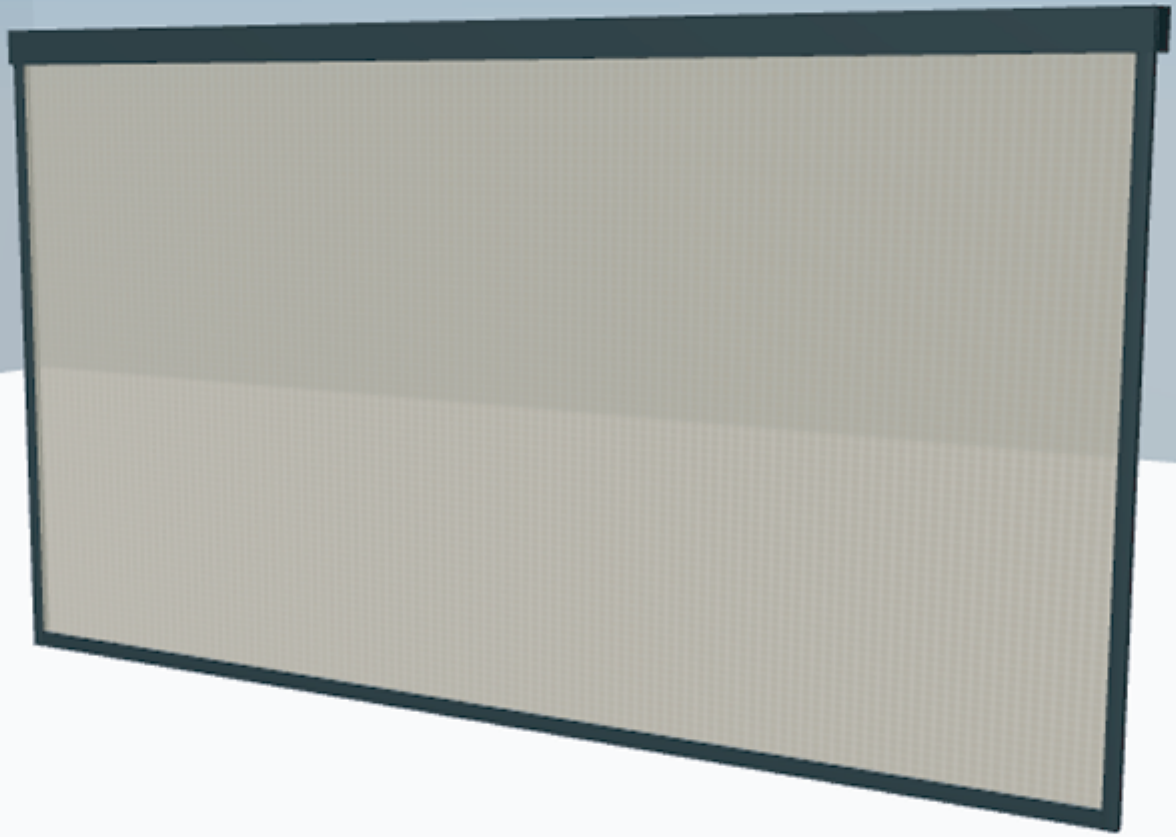
		WIDTH (L)									
PROJECTION (P)	inch	4'-11"	6'-7"	8'-2"	8'-10"	11'-6"	13'-1"	14'-9"	16'-5"	18'1"	19'-8"
	4'-11"										
	6'-7"										
	8'-2"										
	8'-10"										
	11'-6"										
	13'-1"										
	14'-9"										
	16'-5"										
	18'-1"										
	19'-8"										

SEAMLESS FABRIC, SINGLE SYSTEM

ATTACHED FABRIC, SINGLE SYSTEM

ATTACHED FABRIC, SINGLE SYSTEM





# FORTE

VERTICAL BLIND SYSTEM

## VERTICAL BLIND SYSTEM

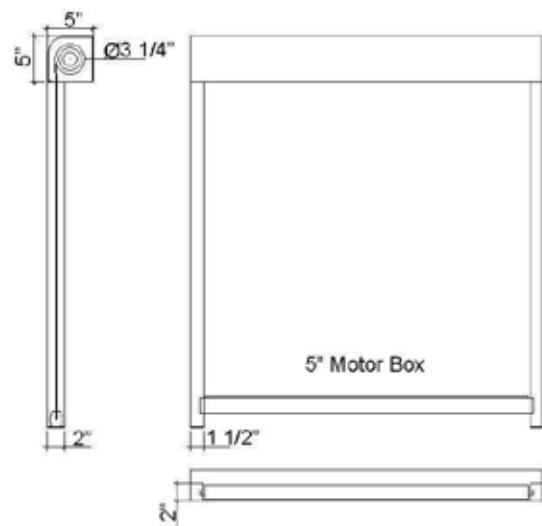
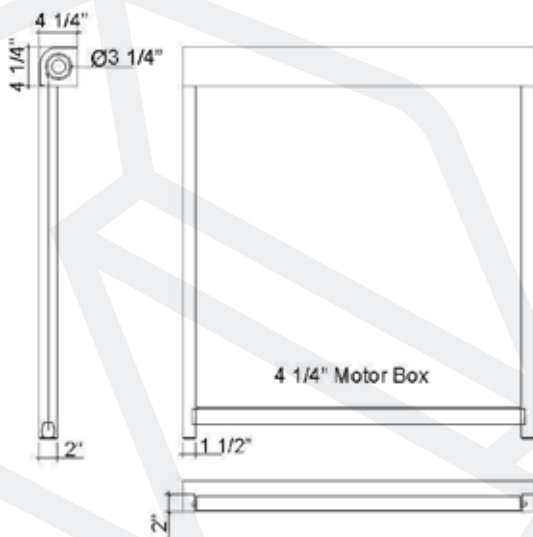
FORTE SCREEN	
With 110 Motor Box ile Max. Width (L):	19'-8"
With 130 Motor Box ile Max. Width (L):	23'
Min. Width (L):	3'-4"
Max. Height (H):	13'-1"

\*\*For seamless fabric, the max system size can be 9'-1"x19'-8".

For Veozip, it can be 12'-2"x19'-8".

\*\*It is taken as a different system (5") beyond 19'-8" in width.

- Pillar Profile: 1 1/2"x2"
- Motor Box: 4 1/4"x4 1/4" - 5"x5"
- Somfy Altus RT50 530 RTS (30Nm) Motor is used.
- The system can be remote-controlled.
- Fabric Type; Serge Ferrari Soltis Horizon 86,  
Serge Ferrari Soltis Perform 92,  
Serge Ferrari Soltis Lounge 96,  
Serge Ferrari Soltis Proof W96,  
Serge Ferrari Soltis Veozip
- Horizon 86, and Lounge 96 are taken as standard prices in the pricing.  
A price difference is applied in the case of Perform 92, Proof W96, or Veozip.
- A price difference is applied for a 5" profile.
- Printing and logo can be applied to fabrics.
- Transparent fabric is an option.
- Colour options are available.  
(Pulver/Ral Colour Powder, Wood Effect)
- Under warranty for 5 years.
- All-season.
- Stainless accessory are used.
- Resistant to adverse weather and fire.
- System weight; 1 lb/ft<sup>2</sup>



System Dimension Standards;

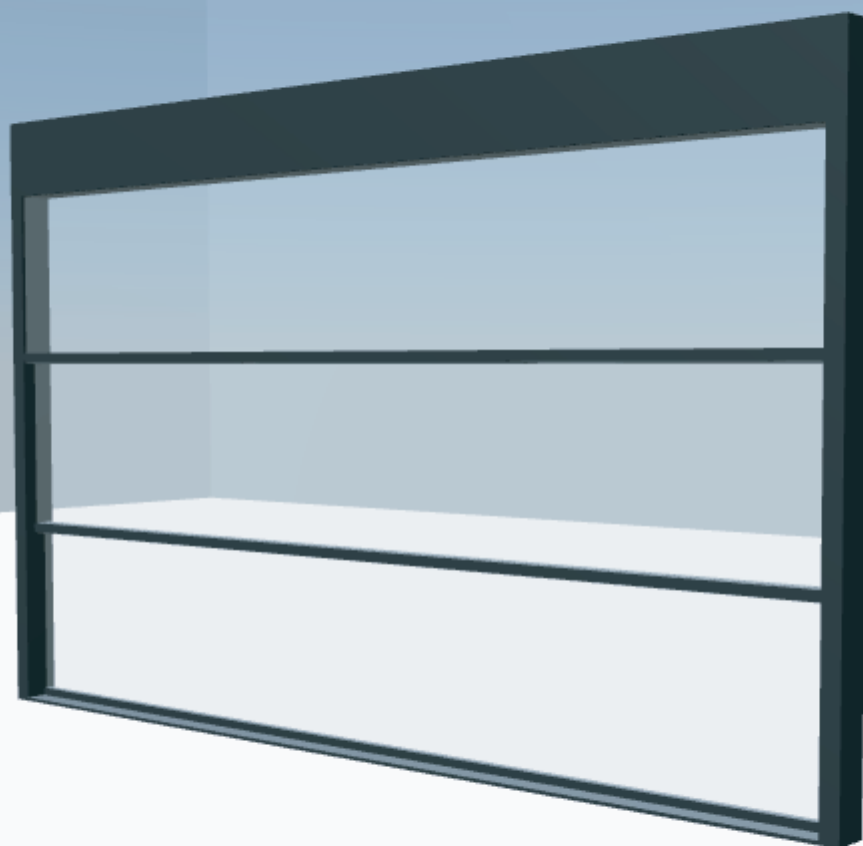
		WIDTH (L)												
inch		3'-4"	4'-11"	6'-7"	8'-2"	8'-10"	11'-6"	13'-1"	14'-9"	16'-5"	18'1"	19'-8"	21'-4"	23'
HEIGHT (H)	3'-11"													
	5'-7"													
	7'-3"													
	8'-10"													
	10'-6"													
	12'-2"													
	13'-1"													

SEAMLESS FABRIC

ATTACHED FABRIC

ATTACHED FABRIC, DIFFERENT SYSTEM (5")





# COMPACT

MOTORIZED INSULATED GUILLOTINE  
WINDOW SYSTEM



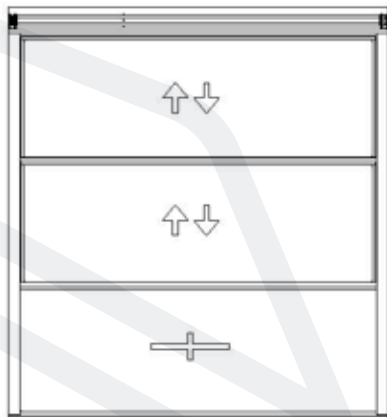
## MOTORIZED INSULATED GUILLOTINE WINDOW SYSTEM

4+14+4 mm Tempered	
Max. Height (H):	8'-2"
Max. Width (L):	13'-2"
Expansion Models:	1+1 / Bottom Fixed-Gathers Down

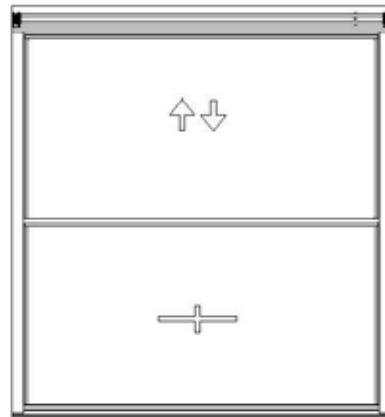
4+14+4 mm Tempered	
Max. Height (H):	11'-6" / 9'-2"
Max. Width (L):	9'-10" / 13'-2"
Expansion Models:	2+1 / Bottom Fixed-Gathers Down

\*\* Double motor should be used when the system size exceeds 108 ft<sup>2</sup>.

- Vertical Frame Profile: 3"x5"
- Bottom/Top Frame Profile: 1 3/4"x5"
- Motor Box: 5"x6"
- Wing Profile: 1 1/2"x2"
- Somfy Altus LT60 6100 RTS (120Nm) motor is used.
- The system can be remote-controlled.
- Fixed glass in the system;  
Gathers down should also be inside.
- Colour options are available.  
(Pulver/Ral Colour Powder, Wood Effect)
- Profiles are heat insulated.
- Under warranty for 5 years.
- All-season.
- Stainless accessory are used.
- Resistant to adverse weather and fire.
- Energy class; Class 3
- System weight: 6 lb/ft<sup>2</sup>



2+1 Bottom Fixed-Gathers Down



1+1 Bottom Fixed-Gathers Down

System Dimension Standards;

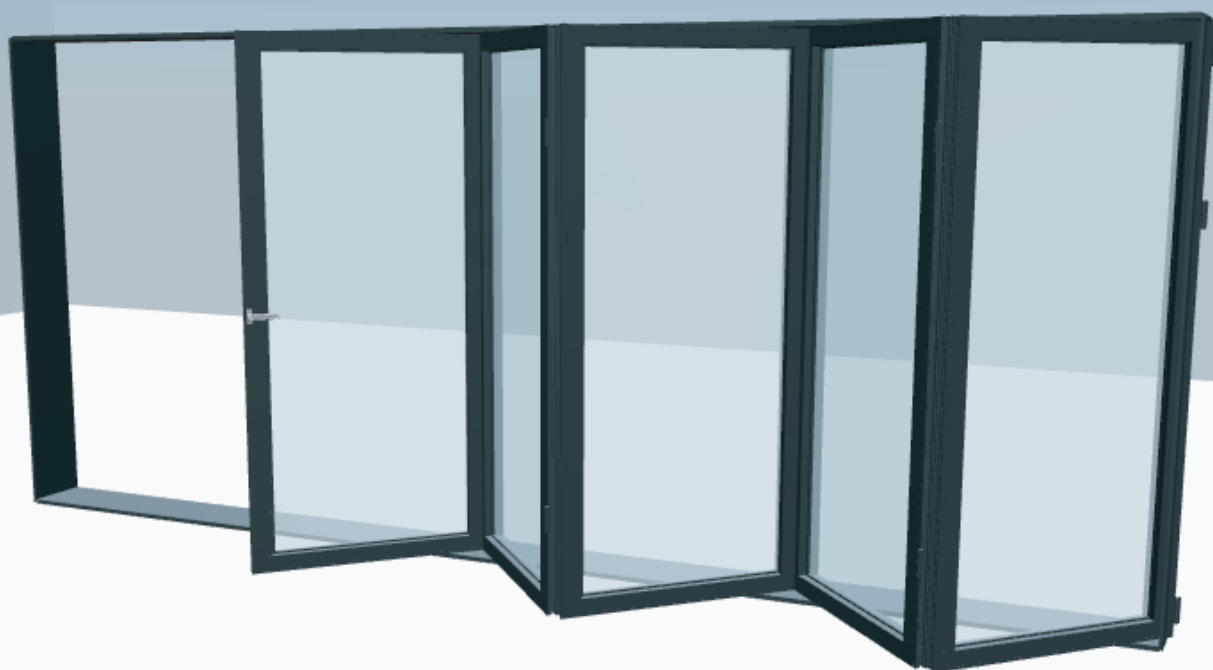
1+1		WIDTH (L)							
inch	6'-7"	7'-3"	8'-2"	8'-10"	9'-10"	10'-6"	11'-6"	11'-10"	13'-2"
HEIGHT (H)	6'-7"								
	7'-3"								
	8'-2"								
5/32" Temp. + 9/16" AS. + 5/32" Temp.									

2+1		WIDTH (L)							
inch	6'-7"	7'-3"	8'-2"	8'-10"	9'-10"	10'-6"	11'-6"	11'-10"	13'-2"
HEIGHT (H)	6'-7"								
	7'-3"								
	8'-2"								
	9'-2"								
	9'-10"								
	11'-6"								
5/32" Temp. + 9/16" AS. + 5/32" Temp.									

**SINGLE MOTOR**

**DOUBLE MOTOR**





# BIFOLD

INSULATED FOLDING  
DOOR SYSTEM

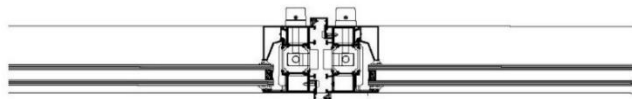




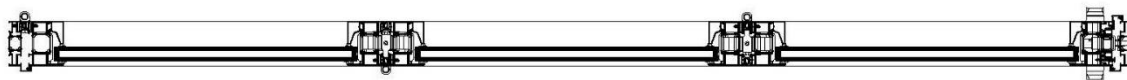
## INSULATED FOLDING DOOR SYSTEM

1/4" + 5/8" AS + 1/4" Tempered	
Max. Height (H):	9'-10"
Max. Wingspan:	4'
Min. Wingspan:	2'

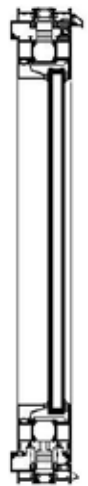
- Bottom/Top Frame Profile: 1 3/4"x3 1/2"
- Side Frame Profile: 1 1/2"x3 1/2"
- Wing Profile: 2 1/2"x3"
- The max. number of wings that can be opened to one side is 7.
- The max. number of wings that can be opened to both sides is 14.
- The opening can be done outside or inside.
- Colour options are available.  
(Pulver/Ral Colour Powder, Wood Effect)
- Profiles are heat insulated.
- Under warranty for 5 years.
- All-season.
- Stainless accessory are used.
- Resistant to adverse weather and fire.
- Maximum bearing capacity of a wing is 264 lb
- Energy class; Class 4
- System weight; 10 lb/ft<sup>2</sup>



Double Side Opening Middle Joint

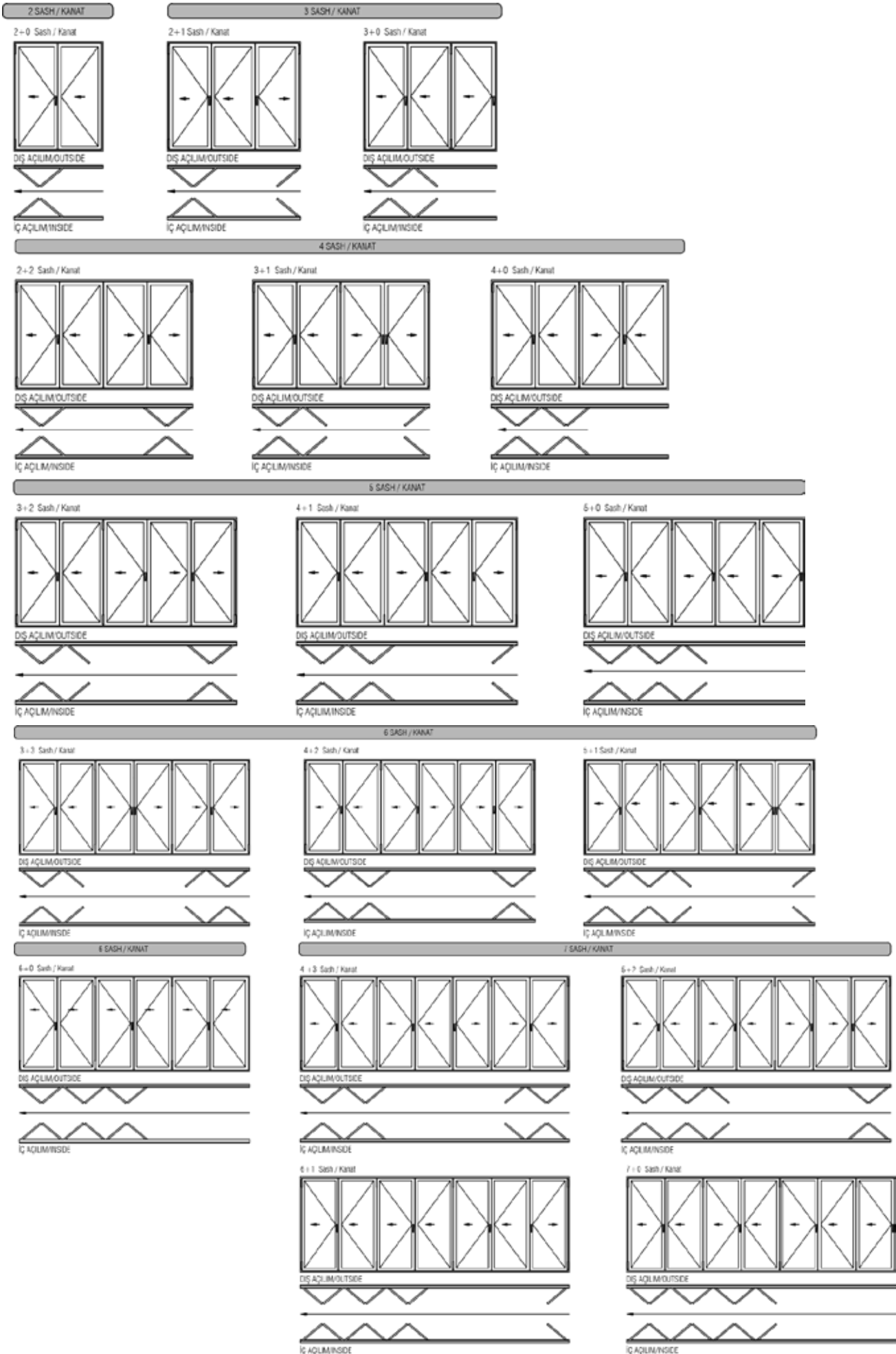


Top View/Plan



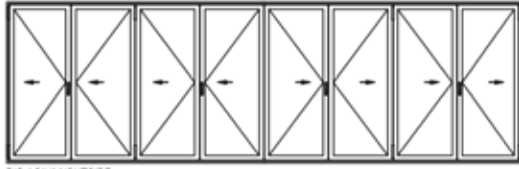
Side View/Section

# System Types;



## 8 SASH / KANAT

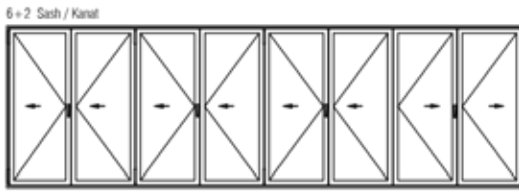
4+4 Sash / Kanat



DİŞ AÇILIM/OUTSIDE



İÇ AÇILIM/INSIDE

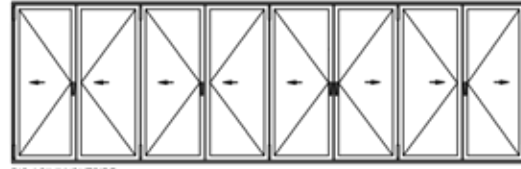


DİŞ AÇILIM/OUTSIDE



İÇ AÇILIM/INSIDE

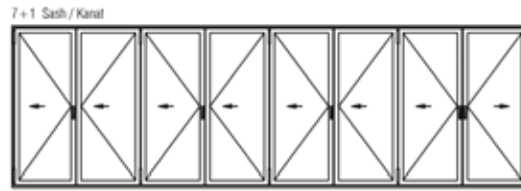
5+3 Sash / Kanat



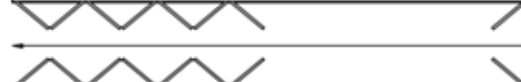
DİŞ AÇILIM/OUTSIDE



İÇ AÇILIM/INSIDE

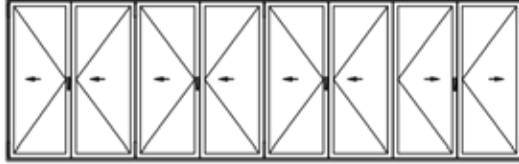


DİŞ AÇILIM/OUTSIDE



İÇ AÇILIM/INSIDE

6+2 Sash / Kanat

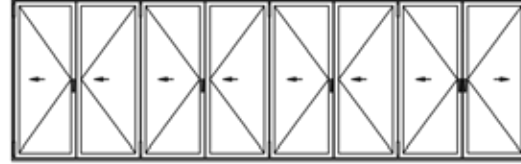


DİŞ AÇILIM/OUTSIDE



İÇ AÇILIM/INSIDE

7+1 Sash / Kanat



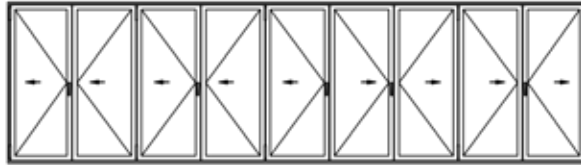
DİŞ AÇILIM/OUTSIDE



İÇ AÇILIM/INSIDE

## 9 SASH / KANAT

5+4 Sash / Kanat

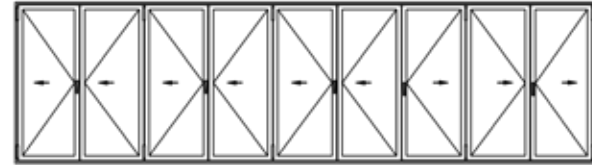


DİŞ AÇILIM/OUTSIDE



İÇ AÇILIM/INSIDE

6+3 Sash / Kanat



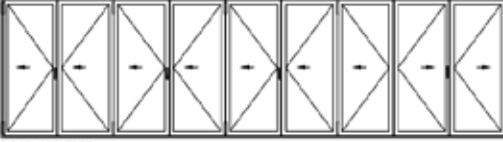
DİŞ AÇILIM/OUTSIDE



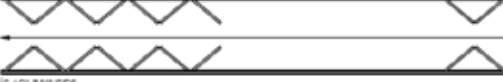
İÇ AÇILIM/INSIDE

## 9 SASH / KANAT

7+2 Sash / Kanat



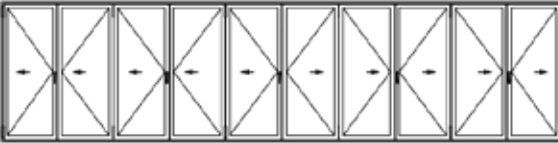
DİŞ AÇILIM/OUTSIDE



İÇ AÇILIM/INSIDE

## 10 SASH / KANAT

8+2 Sash / Kanat



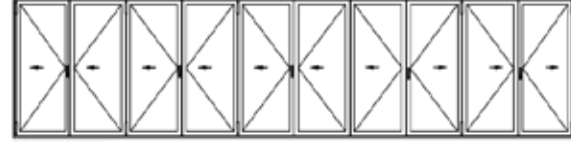
DİŞ AÇILIM/OUTSIDE



İÇ AÇILIM/INSIDE

## 13 SASH / KANAT

6+4 Sash / Kanat



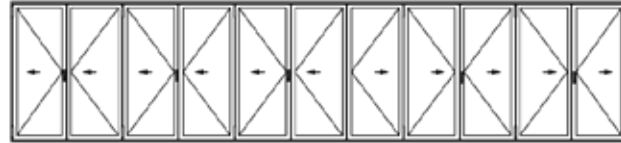
DİŞ AÇILIM/OUTSIDE



İÇ AÇILIM/INSIDE

## 11 SASH / KANAT

9+2 Sash / Kanat

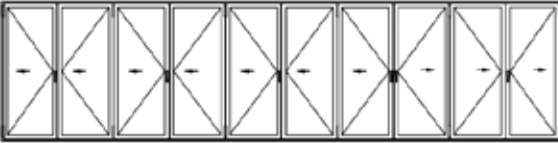


DİŞ AÇILIM/OUTSIDE



İÇ AÇILIM/INSIDE

7+3 Sash / Kanat

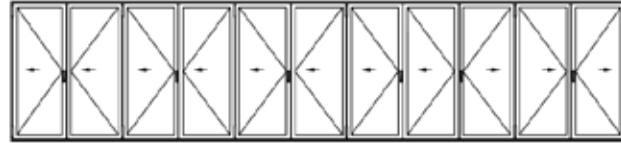


DİŞ AÇILIM/OUTSIDE



İÇ AÇILIM/INSIDE

7+4 Sash / Kanat



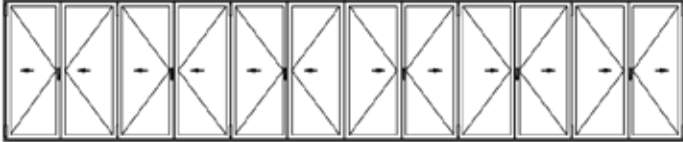
DİŞ AÇILIM/OUTSIDE



İÇ AÇILIM/INSIDE

12 SAGH / KANAT

6 x 5 Sagh / Kanat

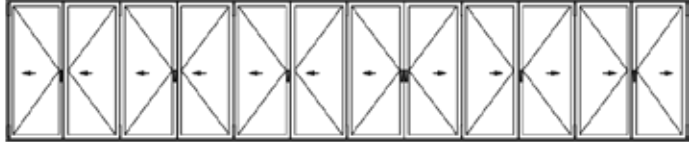


DİŞ AÇILIM/OUTSIDE



İÇ AÇILIM/INSIDE

7 x 5 Sagh / Kanat



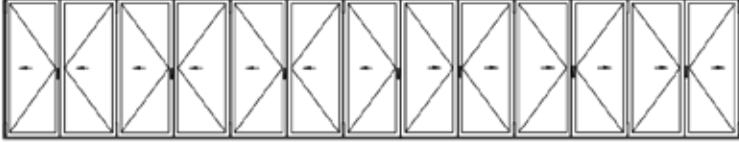
DİŞ AÇILIM/OUTSIDE



İÇ AÇILIM/INSIDE

13 SAGH / KANAT

7 x 6 Sagh / Kanat



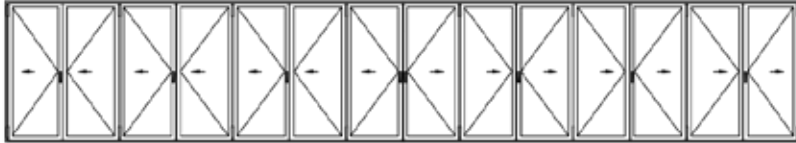
DİŞ AÇILIM/OUTSIDE



İÇ AÇILIM/INSIDE

14 SAGH / KANAT

7 x 7 Sagh / Kanat

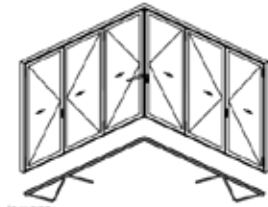


DİŞ AÇILIM/OUTSIDE

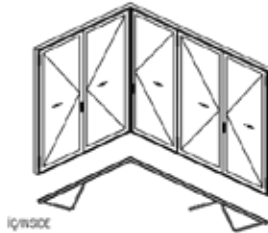


İÇ AÇILIM/INSIDE

DÖNÜŞKÜÇÜ

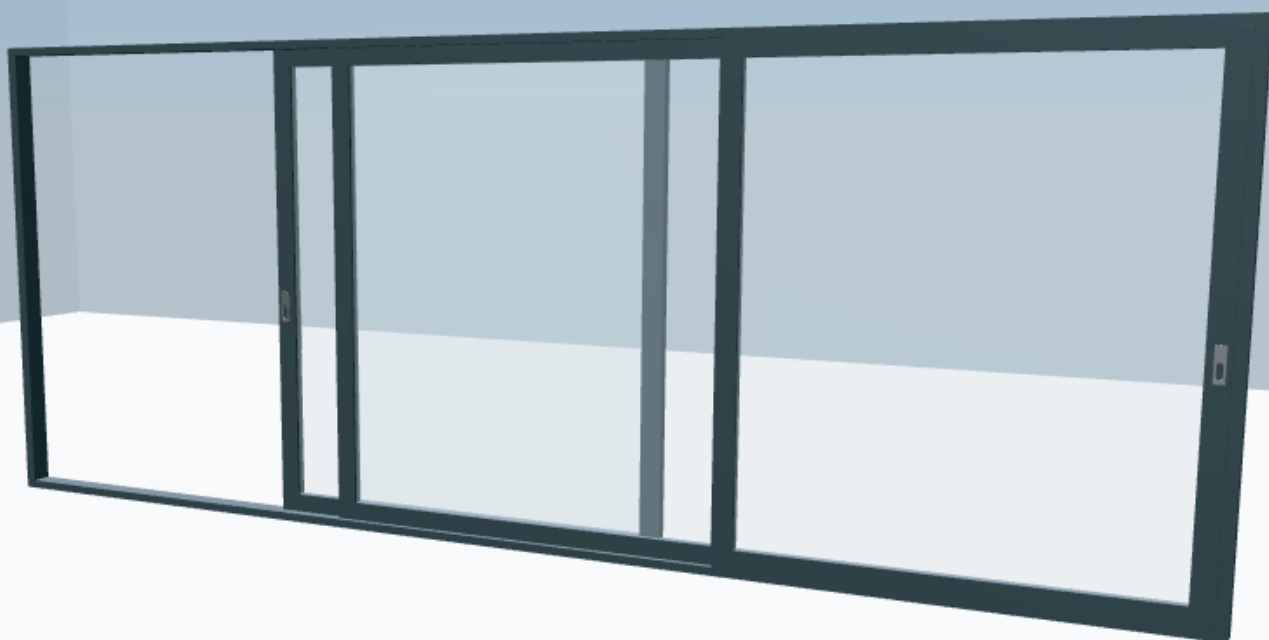


İÇ/INSIDE



İÇ/INSIDE





# LIFT & SLIDE

INSULATED SLIDING DOOR SYSTEM

## INSULATED SLIDING DOOR SYSTEM

1/4" + 9/16" AS + 1/4" Tempered	
Max. Height (H):	9'-10"
Max. Wingspan:	8'-2"
Min. Wingspan:	3'-4"

- Frame Profile; Double Rail 1 3/4"x4 1/2"  
Triple Rail 1 3/4"x7 1/4"
- Wing Profile: 2"x4"
- The max. number of wings that can be opened to one side is 3.
- The max. number of wings that can be opened to both sides is 6.
- The fixed-wing in the system should be positioned on the exterior
- Colour options are available.  
(Pulver/Ral Colour Powder, Wood Effect)
- Profiles are heat insulated.
- Under warranty for 5 years.
- All-season.
- Stainless accessory are used.
- Resistant to adverse weather and fire.
- Maximum bearing capacity of a wing is 661 lb
- Energy class; Class 4
- System weight; 9 lb/ft<sup>2</sup>

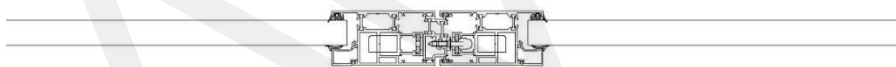


Double Rails



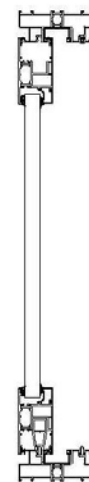
Triple Rails

Top View/Plan

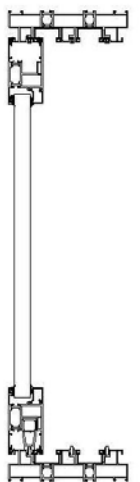


Double Side Opening Middle Joint

Side View/Section

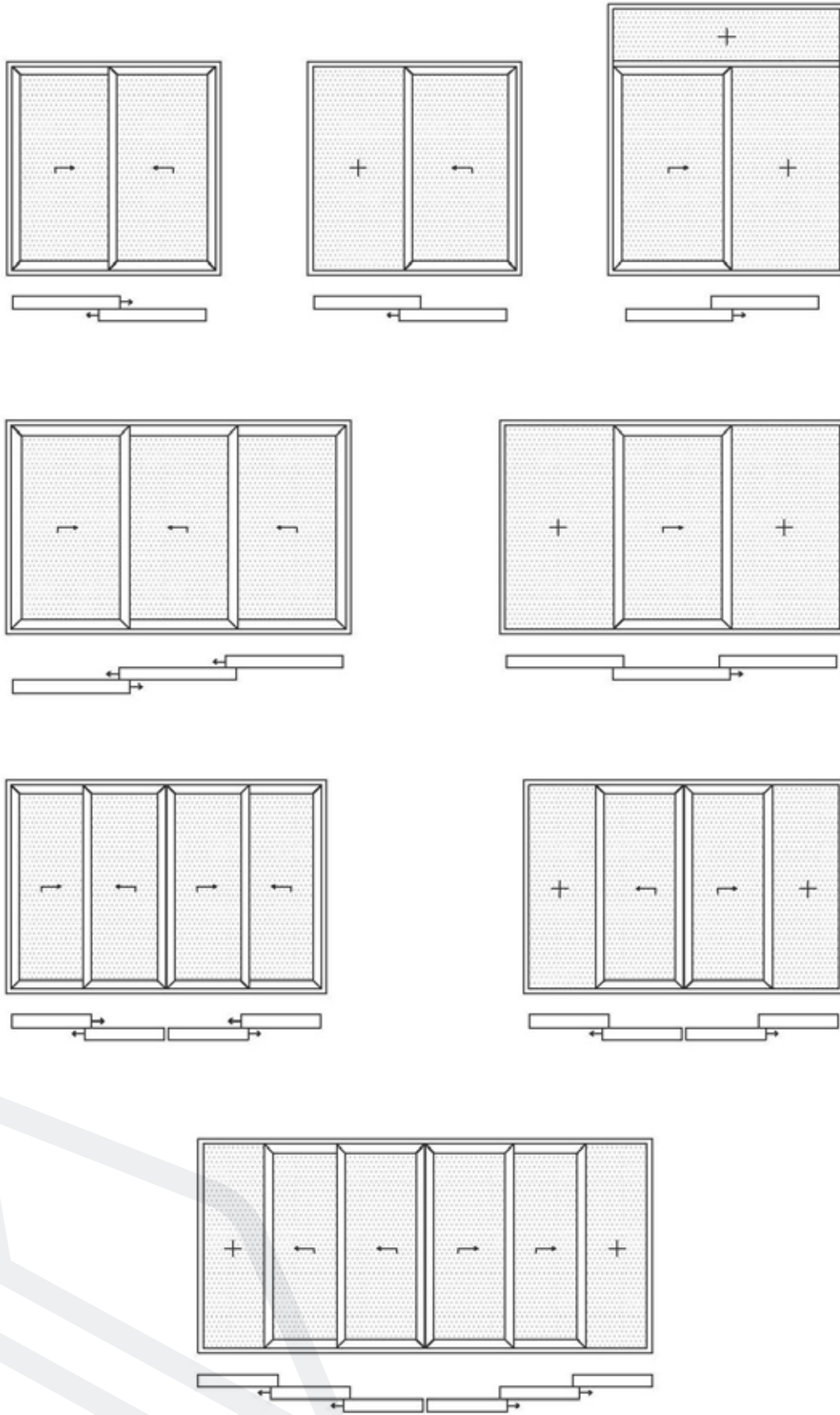


Double Rails

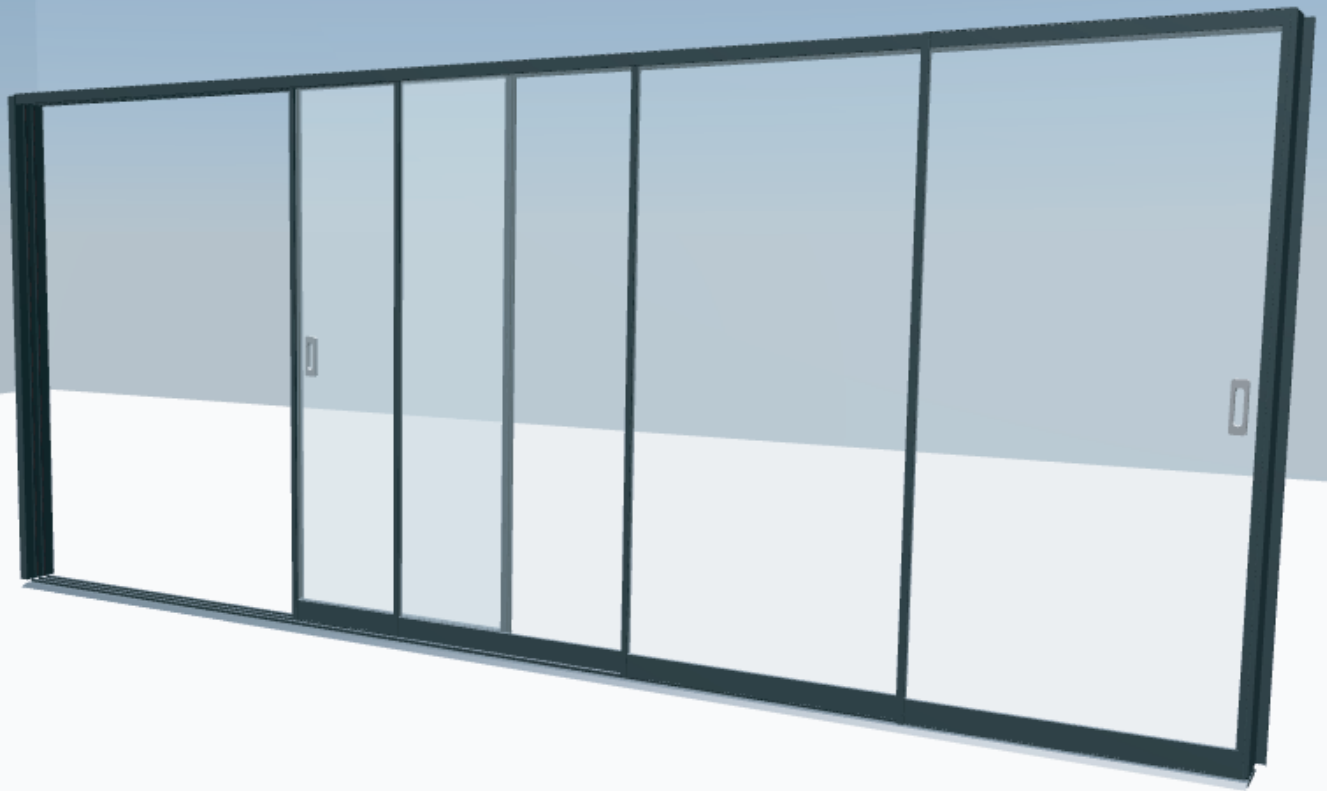


Triple Rails

System Types;



\*\*The choice of double and triple rails according to the width affects the price.



# MINIMA

SLIDE GLASS DOOR / WINDOW SYSTEM  
(Single Glass)



## SLIDE GLASS DOOR/WINDOW SYSTEM (Single Glass)

3/8" Tempered	
Max. Height (H):	9'-2"
Max. Wingspan:	4'-11"
Min. Wingspan:	2'

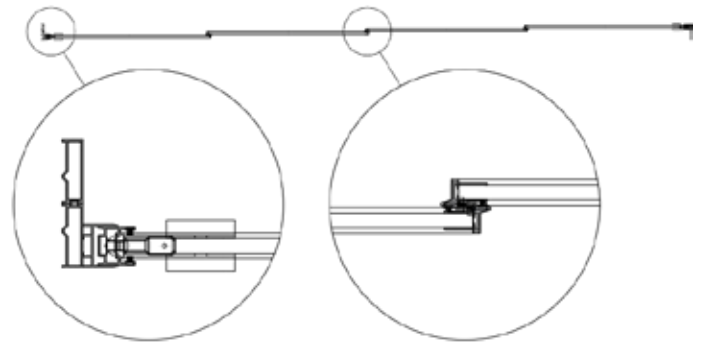
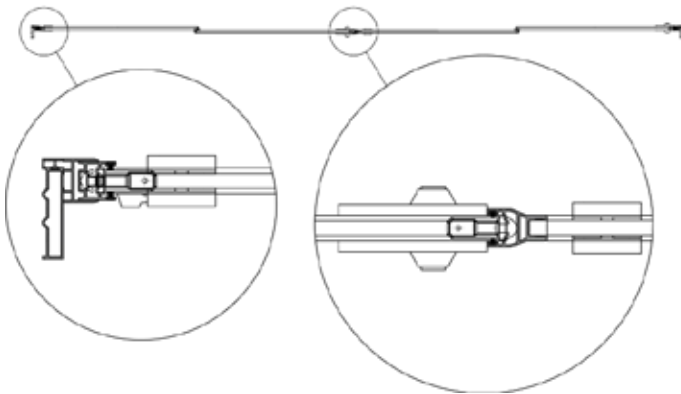
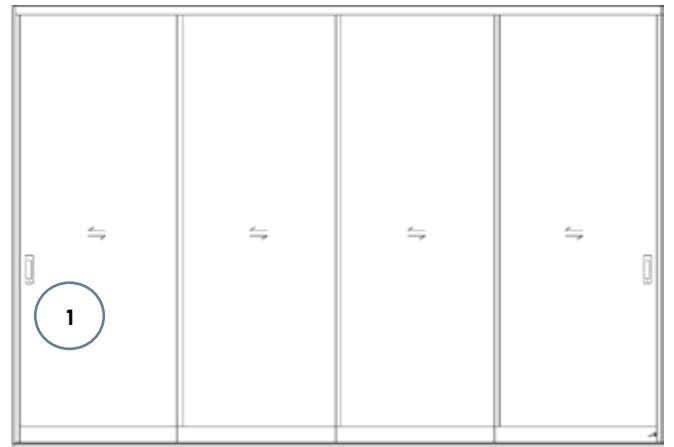
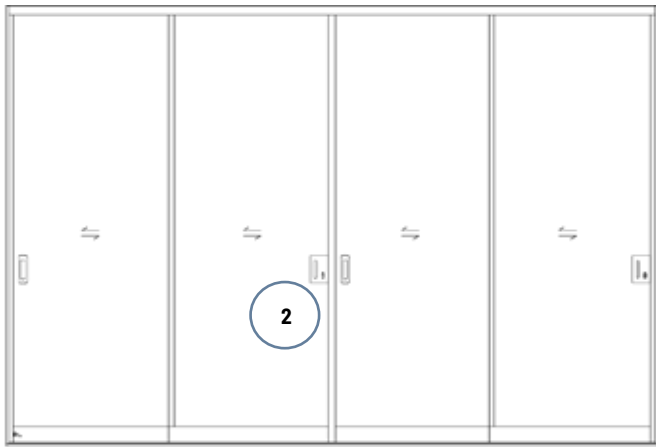
- Double Bottom Rail Profile: 1/2"x1 3/4" (Sill: 1 1/4")  
Triple Bottom Rail Profile: 1/2"x2 1/2" (Sill: 1 1/4")
- Double Mullion Profile: 9/16"x1 3/4"  
Triple Mullion Profile: 9/16"x2 1/2"
- Triple Top Rail Profile: 1 3/4"x2 3/4"  
Quintet Top Rail Profile: 1 3/4"x4 1/4"
- Plinth Profile: 3/4"x3 1/2"
- The max. number of wings that can be opened to one side is 5.
- The max. number of wings that can be opened to both sides is 10.
- Different lock options are available.
  - Inox Glass Lock
  - Plinth Lock (must be used with built-in door handle.)
- Colour options are available. (Pulver/Ral Colour Powder, Wood Effect)
- Under warranty for 5 years.
- All-season.
- Stainless accessory are used.
- Resistant to adverse weather and fire.
- Maximum bearing capacity of a wing is 330 lb
- Energy class; Class 2
- System weight; 6 lb/ft<sup>2</sup>

Side View/Section



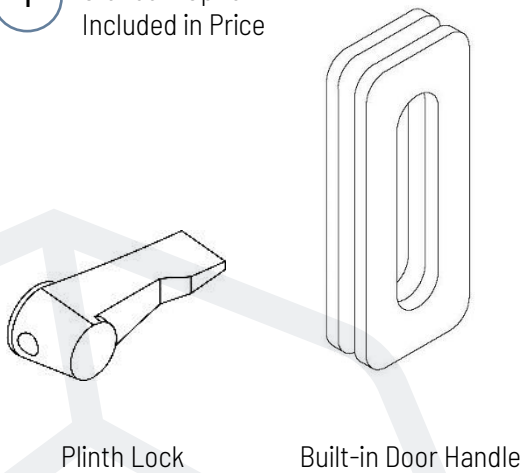
Double-Side Opening

Single-Side Opening

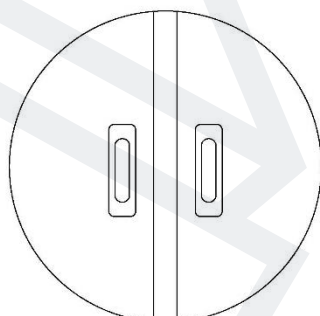


**LOCK AND HANDLE OPTION**

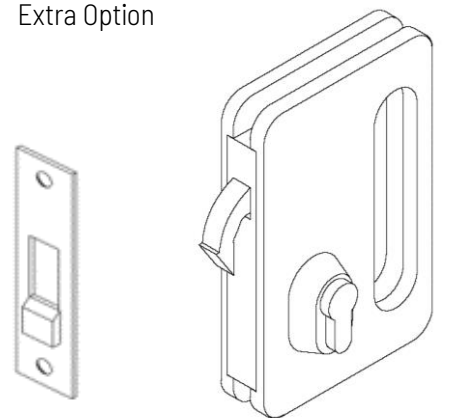
**1** Standart Option  
Included in Price



Double-Side Opening  
Standart Option



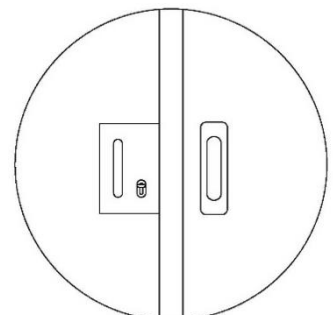
**2** Extra Option

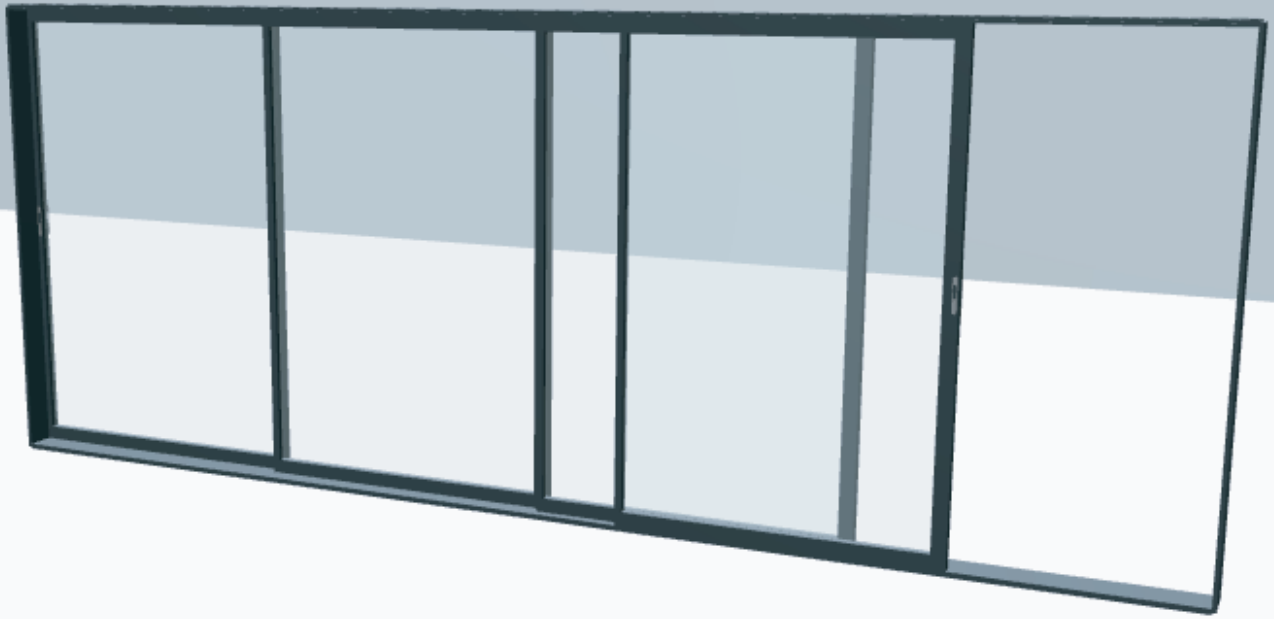


Lock Striker

Inox Glass Lock

Double-Side Opening  
Extra Option





# CLASSY

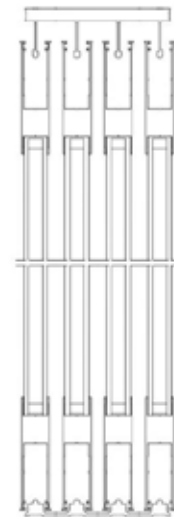
SLIDE GLASS DOOR / WINDOW SYSTEM  
(Double Glass)

## SLIDE GLASS DOOR/WINDOW SYSTEM (Double Glass)

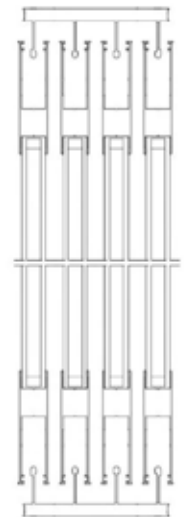
4+12+4 mm Tempered	
Max. Height (H):	9'-10"
Max. Wingspan:	4'-11"
Min. Wingspan:	2'

- Bottom Frame Profile: 5/8"-1 1/2" x 4 3/4"
- Top Frame Profile: 1 1/2" x 4 3/4"
- Wing Profile: 1" x 3 3/4"
- The max. number of wings that can be opened to one side is 4.
- The max. number of wings that can be opened to both sides is 8.
- With sill and without sill options are available.
- 90° corner joint is an option.
- It can also be made of 3/8" glass.
- Colour options are available.  
(Pulver/Ral Colour Powder, Wood Effect)
- Under warranty for 5 years.
- Stainless accessory are used.
- All-season.
- Resistant to adverse weather and fire.
- Maximum bearing capacity of a wing is 330 lb
- Energy class; Class 3
- System weight; 5,5 lb/ft<sup>2</sup>

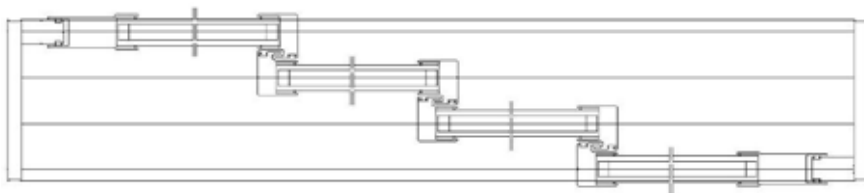
Side View/Section



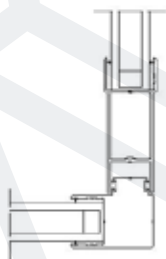
Without Sill  
(5/8")  
(Not recommended  
for outdoor)



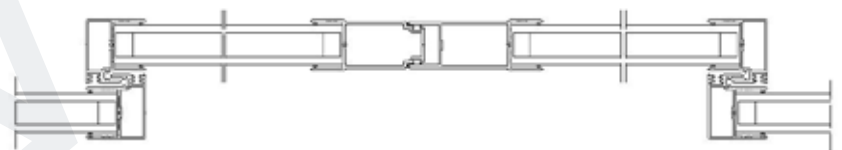
With Sill  
(1 1/2")



Top View/Plan



90° Corner Joint



Double Side Opening Middle Joint

**LOCK AND HANDLE OPTIONS**



STAC Titan Handle

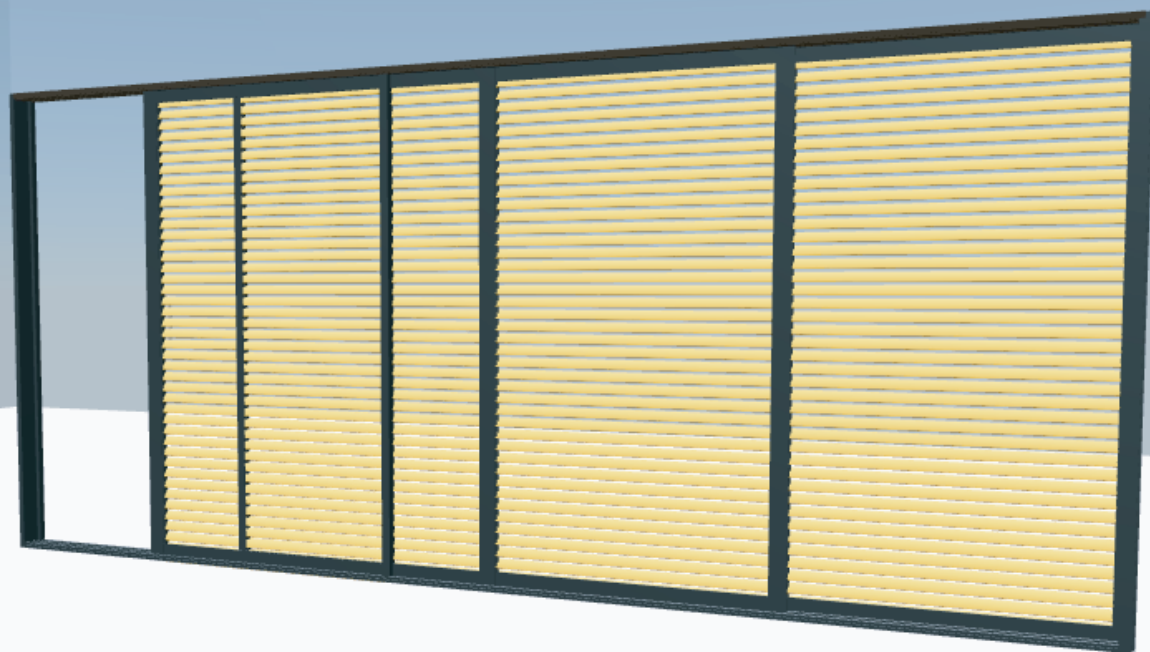


STAC Pool Handle  
(Fixed)



STAC Pool Handle  
(Moving)





# ZION

SLIDE LOUVER  
DOOR SYSTEM

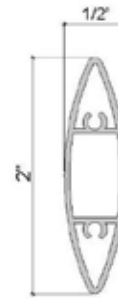


## SLIDE LOUVER DOOR SYSTEM

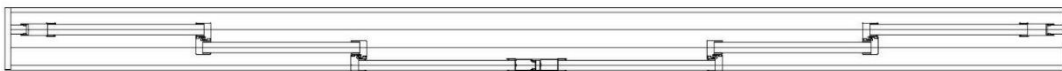
ZION	
Max. Height (H):	9'-10"
Max. Wingspan:	4'-3"
Min. Wingspan:	2'

- Bottom Frame Profile: 1 1/2" x 4 3/4"
- Top Frame Profile: 1 1/2" x 4 3/4"
- Wing Profile: 1" x 3 3/4"
- Solar Shadings Profile: 1/2" x 2"
- The distance between solar shadings profile is 1/8".
- The max. number of wings that can be opened to one side is 4.
- The max. number of wings that can be opened to both sides is 8.
- It can be used as a fixed or sliding system.
- Colour options are available.  
(Pulver/Ral Colour Powder, Wood Effect)
- Under warranty for 5 years.
- Stainless accessory are used
- Resistant to fire.
- System weight; 3,5 lb/ft<sup>2</sup>

Solar Shadings Profile



Side View/Section



Top View/Plan

With Sill (1 1/2")





[www.schildr.global](http://www.schildr.global)