

RHP530



Programmer
Software Guide

CONTENTS

1. Unpacking	1
1.1. System Requirements-----	1
1.2. Installing Programming Software-----	1
1.3. Arrangement To Program -----	1
2. Getting Started	2
2.1. Launch Programming -----	2
2.2. Open saved file -----	2
2.3. Port setting-----	2
2.4. Programming -----	2
2.5. Save As Setting-----	3
3. Setting	4
3.1. General Setting -----	4
3.1.1. <i>Welcome Greetings</i> -----	4
3.1.2. <i>Power Save</i> -----	4
3.1.3. <i>Battery Low warning</i> -----	4
3.1.4. <i>Tx release Delay Time</i> -----	4
3.1.5. <i>Power ON LCD Timing Setting</i> -----	4
3.1.6. <i>PTT Rekey Inhibit setting</i> -----	4
3.2. Keys Define-----	5
3.2.1. <i>A,B,C,D keys</i> -----	5
3.2.2. <i>Key Features</i> -----	5
3.3. Menu Definitions-----	6
3.3.1. <i>Power On initialization</i> -----	7
3.4. Scan Define-----	7
3.4.1. <i>Time</i> -----	7
3.4.2. <i>Scan Type</i> -----	7
3.5. Bluetooth Initialize Setting -----	8
4. Memory Setting	9

1. Unpacking

This package contains following items.

- Programming Lead (See illustrated.)
- Compact Disc (Programming software or installing wizards).
- Programming Guide (this book).

1.1. System Requirements

- Windows 7 32/64 bits /Vista/XP/Me/2000/98SE/95.
- 32MB of RAM.
- 2MB of available hard disk space.
- CD –ROM Drive or internet access.


1.2. Installing Programming Software

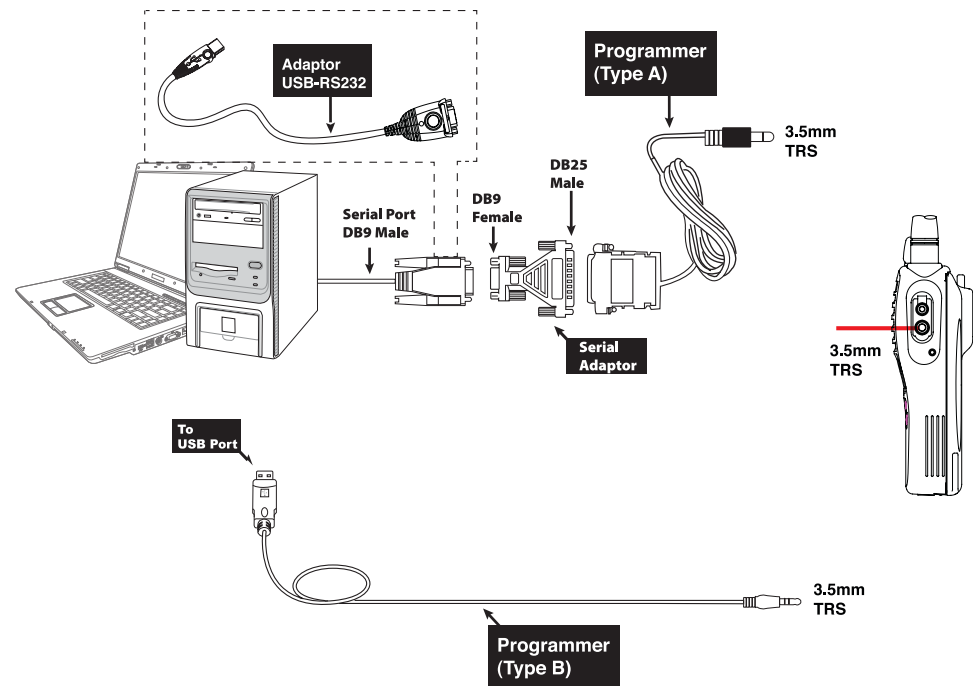
Insert the compact disc into CD –ROM drive, installing wizards will automatically guide you to install the software. If installation does not work properly, to run setup.exe from CD –ROM drive.

1.3. Arrangement To Program

Connect the RHP530 as illustrated.

- (1) Hold the power on/off button to turn the RHP530 off.
- (2) Pull external spk/mic rubber out.
- (3) Plug programming lead into 3.5mm earpiece.
- (4) Connect end of the serial cable to PC's serial port with 25 –9 adaptor or used USB type.
- (5) Hold **PTT** (Push-to-talk) button and hold the power on button until LCD shown *CLONE* chars.

 **INTERFACE CABLE AND USB –232 ARE NOT SUPPLIED AS PART OF THE PROGRAMMING LEAD BUT ARE ADDITIONAL ACCESSORIES.**



2. Getting Started

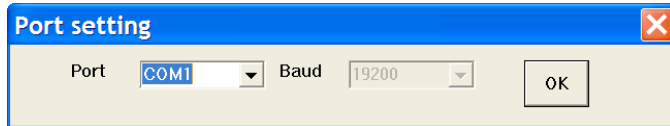
2.1. Launch Programming

From the windows system, on the menu "Start" select "Programs", from Menu "RHP530" select "Launch Program".

2.2. Open Saved File

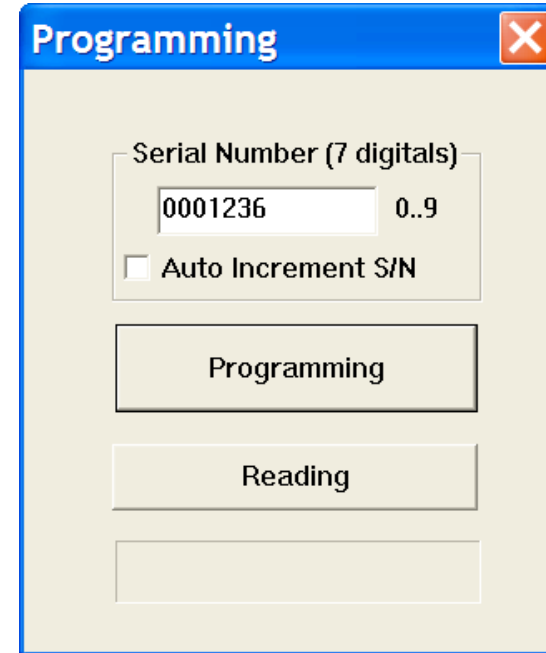
On the menu "File", select "Open", the open window will appear. Select existed default setting in the appropriate box (file name usually), then click on "Open"

2.3. Port Setting



On the "port" menu, click on "port", tick sign show on default Com 1. Select appropriate serial port and click on "OK" .

2.4. Programming

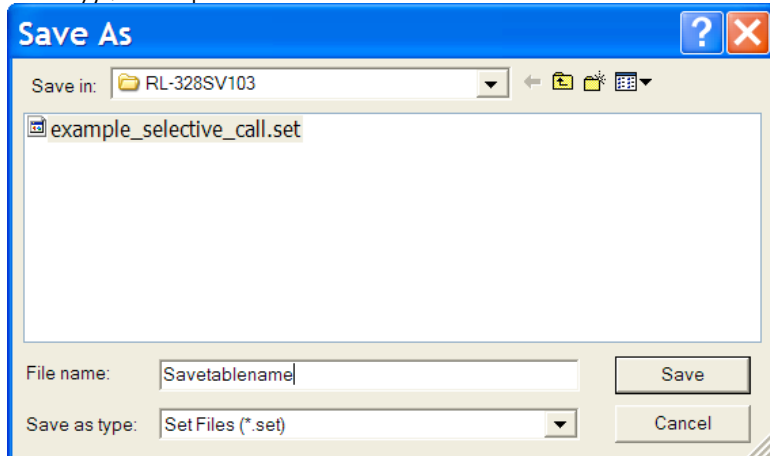


- **Serial Number** – set serial number to manage all RHP530 you had. Type serial number on field as well as set auto number increase if desired.
- **Program the RHP530** – click on "Programming" parameters you set will write to RHP530.
- **Read the RHP530** – click on "Reading" to get parameters from RHP530, serial number appears on filed after reading.

2.5. Save As Setting

On the menu "File" click "Save as", the Save RHP530 setting as window will appear.

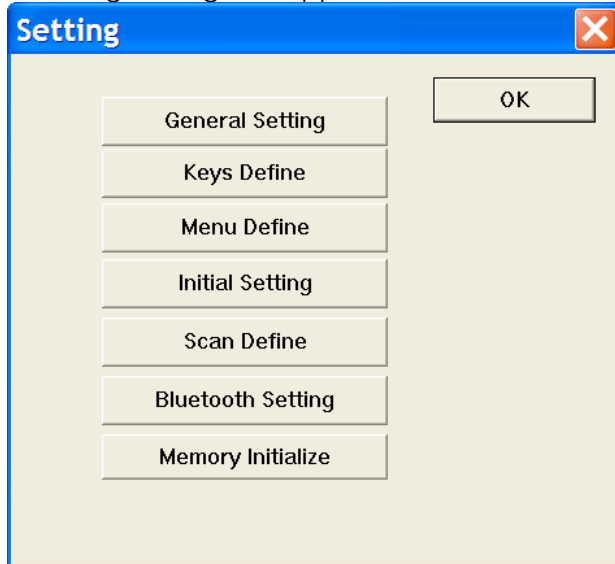
To type the filename in the appropriate box (file name usually)., then press "Save"



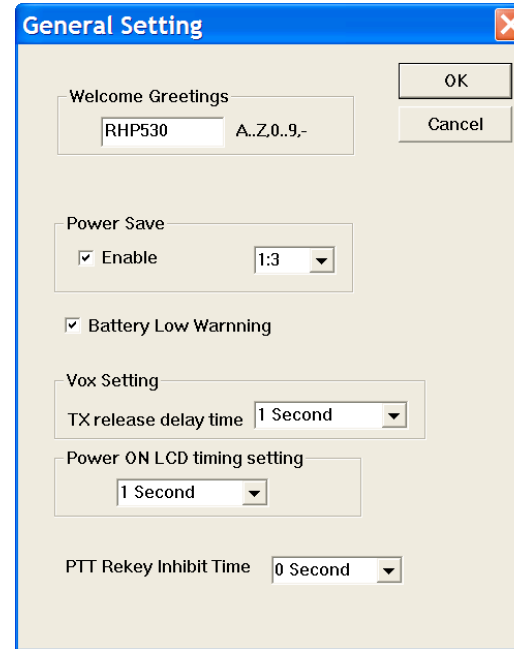
IT'S RECOMMENDED TO SAVE ALL THE PROGRAMMED DATA IN THE HARD DISK OF YOUR PC OR DISKETTE(S) IN ORDER TO OBTAIN A PROGRAMMING ARCHIVE CONTAINING THE DATA OF ALL THE RHP530 YOU HAVE PROGRAMMED. THIS WILL BE USEFUL IN CASE YOUR CUSTOMER WOULD LIKE TO ADD NEW RHP530 TO THE EXISTING NETWORK OR IF YOU HAVE TO CREATE NEW NETWORKS WHICH HAVE SIMILAR PROGRAMMING.

3. Setting

There are many general parameters of RHP530 whereby user can change parameter to obtain convenient operation. Start programming software and click Setting →General. following dialog box appear



3.1. General Setting



3.1.1. Welcome Greetings

This option sets show defined characters after the RHP530 turns on. To type word on field (up to 8-digit characters).

3.1.2. Power Save

This option enables power saving scale (from 1:1/ 1:2 or 1:3).

3.1.3. Battery Low Warning

This option set battery low warning, when battery volt is below 6.5VDC, the option sounds warning tone in 30 seconds steps.

3.1.4. Tx Release Delay Time

This specifies the delay time after VOX.

3.1.5. Power ON LCD Timing Setting

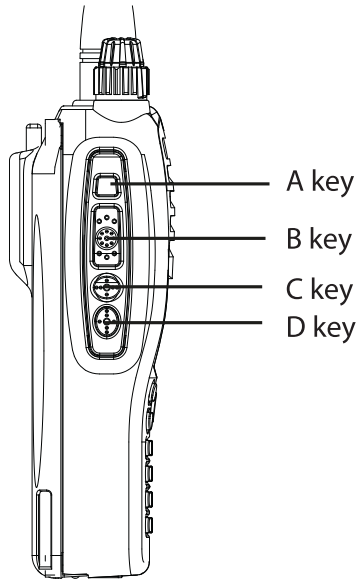
This is period of time to show full patterns after power on.

3.1.6. PTT Rekey Inhibit Setting

If Tx time out timer expires, this option specifies the time, RHP530 don't allow to transmit during the time.

4. Keys Define

Side keys (A,B,C & D), allows user to assign a function is activated immediately.



- **Light on/off** – toggles backlight on or off
- **VOX on/off** – toggles VOX option on or off.
- **Function key** – assigns this key as function key.
- **Second function** – assigns this key as second function.
- **Monitor on/off** – toggles monitor squelch on or off
- **Previous channel** – assign this key to go back previous channel
- **Intercom on/off** – toggles intercom option on or off.

4.1.1. A,B,C,D Keys

	One Click	Long Push	Long Push Time
A Key	<input type="checkbox"/> Power On/Off		1 Sec
B Key	<input type="checkbox"/> PTT		
C Key	Light On/Off	Vox On/Off	3 Sec
D Key	Previous Channel	Monitor On/Off	2 Sec

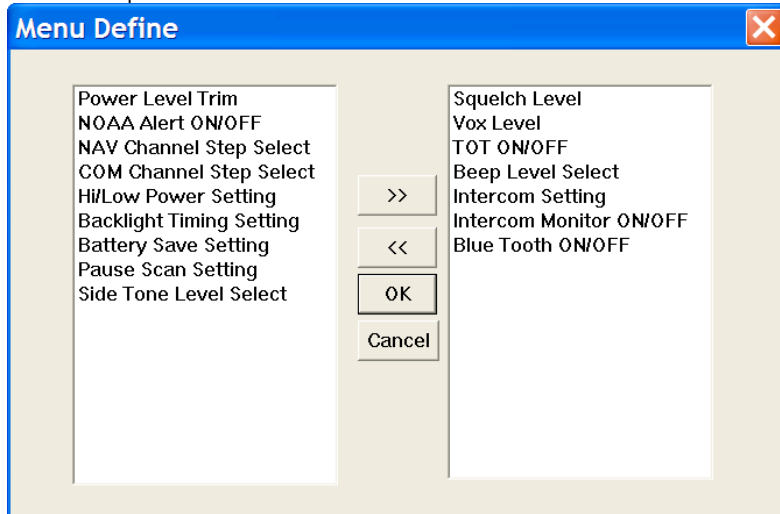
OK Cancel

4.1.2. Key Features

- **Bluetooth on/off** – toggles Blue-Tooth option on or off
- **Bluetooth pair** – execute Blue-Tooth pairing mode

4.2. Menu Definitions

Menu define allowed user to operate specific options in menu list. Click on desired option in available items and select a desired option. click on ">>" to add the feature for user.



- **Squelch Level** – The option change squelch level (from 0 to 9 in 1 step).
- **VOX Level** – The option is allowed to change VOX Level (from 0 to 9).
- **TOT on/off** – enable/disable the TOT(time out timer).
- **Beep On/Off**– Beep sound is allowed to turn On/Off.
- **Intercom Setting on/off** – enable/disable the intercom feature.
- **Intercom Monitor on/off** – enable/disable the intercom monitor.
- **Blue-Tooth on/off** – enable/disable the blue-tooth power.
- Power Level Trim – this option trim the power level
- **DOES NOT CHANGE THIS PARAMETER WITHOUT TECHNICAL SUPPORT.**
- **NOAA Alert on/off** – enable/disable the alert while base station announce the alert.

- **NAV Channel Step Select** – the option sets frequency step on NAV channel.
- **COM Channel Step Select** – the option sets frequency step on COM channel.
- **Hi/Low Power Setting** – toggles the RF power level (High/Low)
- **Backlight Timing Setting** – set backlight timing, the backlight keep lighting during the time setting from 0-15 seconds in 1s step.
- **Battery Save Setting** – enable/disable the power saving.
- **Pause Scan Setting** – select the scan type (busy/pause).
- **Side Tone Level Select** – set side tone level (from 0-15 in 1 step).

4.2.1. Power On Initialization

Initial Setting

key Beep
 Keylocked

Power On Frequency: 118.000

Squelch Level: 3

Vox Level: 3

Beep Level: 3

Alert Output Level: 6

Side Tone Level: 3

Intercom Level: 3

Nav Frequency Step: 25KHz

Com Frequency Step: 25KHz

TOT Active: 180 Sec

Buttons: OK, Cancel

RHP530 will be initialized to enable when power on.

- **Key Beep**– enables the beep sound while pressing the button.
- **Keylocked**– keypad is locked.
- **Power on frequency** – sets initial frequency
- **Squelch level**– sets initial squelch level (from 0 –9 in 1 step).
- **VOX level**– sets initial VOX level (from 0 –5 in 1 step).
- **Beep level**– sets initial beep level (from 0 –6 in 1 step).
- **Alert Output level**– sets initial alert (from 1 –6 in 1 step).

- **Side Tone Level**– sets initial side tone level (from 1 –6 in 1 step).
- **Intercom level**– sets initial intercom level (from 1 –6 in 1 step).
- **Nav frequency Step** – sets frequency step in navigation band, the step is from 5K,8.33K,10K,20K,25K,50K and 100KHz.
- **Com frequency Step** –sets frequency step in communication band, the step is from 5K,8.33K,10K,20K,25K,50K and 100KHz.
- **TOT Active** – enable the Time Out Timer.

4.3. Scan Define

Scan Define

Scan Time: 93mS

Stay Time:

Busy scan: 5 sec

Pauses scan: 5 sec

Buttons: OK, Cancel

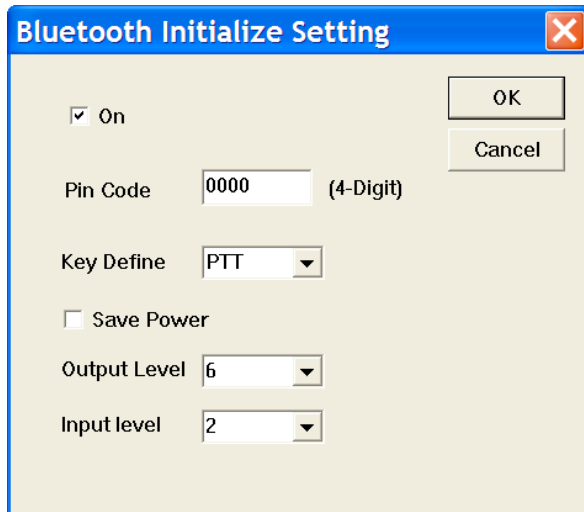
4.3.1. Time

- **Scan Time**– the time set a period of normal channel scan for per channel

4.3.2. Scan Type

- **Busy Scan**– the RHP530 always land on busy channel unless channel free. When the channel is free, RHP530 resumes scan after the timer expired.
- **Pauses Scan**– the RHP530 landed on busy channel. RHP530 resume scan after the timer expired.

4.4. Bluetooth Initialize Setting



The screenshot shows a dialog box titled "Bluetooth Initialize Setting". It contains the following settings:

- On
- Pin Code: 0000 (4-Digit)
- Key Define: PTT
- Save Power
- Output Level: 6
- Input level: 2

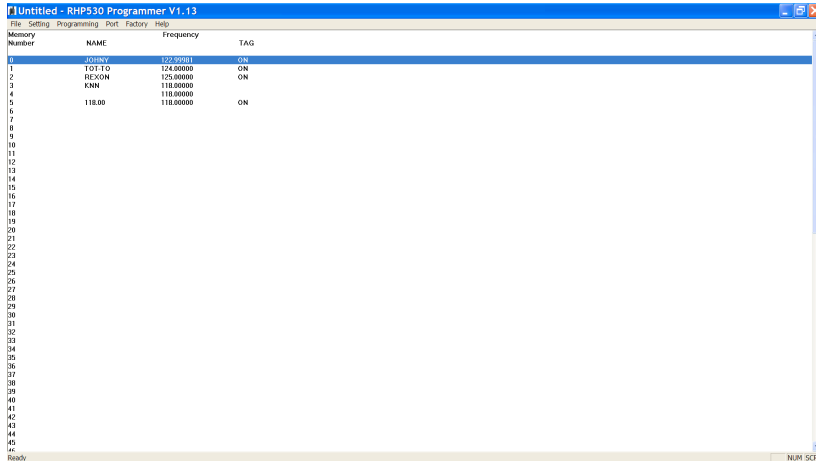
Buttons: OK, Cancel

Some parameters of blue-tooth is initialized when RHP530 power on.

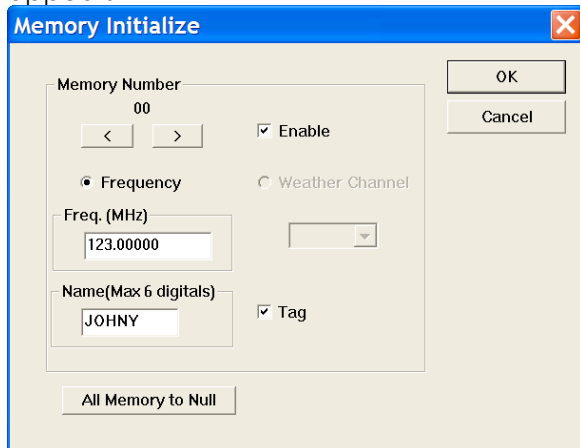
- **Power On Blue-Tooth is On**– the blue-tooth is initialized to on.
- **Pin Code**– set 4 digits pair pin for pairing Blue-Tooth headset.
- **Key Define** – PTT: this option switched RHP530 to transmit when power on/off button of Blue-Tooth headset is pressed once.
- **Save Power**– enables power saving
- **WHEN SAVE POWER IS ACTIVATED, THE RECEIVING ATTACK TIME NEED MORE TIME TO TRANSMIT.**
- **Output level**– this option sets Blue-Tooth microphone sensitivity to met other Blue-Tooth headset.
- **Input level**– this option sets Blue-Tooth speaker volume.

5. Memory Setting

On the menu "Setting", select "Memory", Memory numbers shown as following.



When click on desired memory number, the row is highlight then double click in this row, the Memory initialize window appears



- **Weather Channel** – sets weather channel on this memory number
- **THE WEATHER CHANNEL IS OPTIONAL ON MEMORY NUMBER. PLEASE CONTACT WITH YOUR DEALER IF THE OPTION IS NOT APPEARED.**
- **Name** – names this channel.
- **Tag** – sets the channel including Tag feature.

- **Memory number** – up to 99 numbers,
- **Enable** – enables this memory number.
- **Frequency** – sets the desired Nav/Com frequency.