

# GoldenEar's™ SuperCenters



**“FANTASTIC ... performance throughout the range is superb”**

– Gabe Lowe, *Secrets of Home Theater and High Fidelity*

Model shown: SuperCenter Reference

The SuperCenters are high performance center channel speakers appropriate for the highest quality home theater systems. They are designed to perfectly complement and match our Triton Towers and Aon Bookshelf loudspeakers, both sonically and cosmetically. Their sophisticated industrial design is both attractive and functional, minimizing their apparent size as well as enhancing their acoustic performance.

These center channel models incorporate a D'Appolito Array of two newly developed long-throw 5-1/4" bass/midrange drivers surrounding one of our signature High Velocity Folded Ribbon

(HVFR) tweeters. The 5-1/4" drivers incorporate spiderleg cast baskets for rigidity and minimal internal reflection, as well as our unique multi-vented phase plugs (MVPP), to minimize cross-apex wave propagation interference. They also utilize top-mounted pressure-coupled quadratic planar low frequency radiators that both extend the bass response as well as provide the bass/midrange drivers with ideal acoustic loading and damping.

*\*Only 1" of clearance is required above the bass radiators.*



## SUPERCENTER SERIES

Sonically, the SuperCenters offer the same lifelike, highly detailed, high-resolution, smooth, open, boxless sound quality that all GoldenEar™ speakers are famous for, with excellent low frequency extension and power handling capacity for spectacular dynamic range and impact.

**“If you are looking for the ULTIMATE in CENTER CHANNEL SPEAKER, then your search is over”**

– Robert Koziel, *Secrets of Home Theater and High Fidelity*

The amazingly compact, high-performance SuperCenter X incorporates two 5-1/4" bass/midrange drivers, the GoldenEar High Velocity Folded Ribbon tweeter, and one 7" x 10" quadratic planar low frequency radiator, for surprisingly full-range performance from a modest sized enclosure. The SuperCenter X is just the perfect size and performance for the typical size living room or family room home theater system.

The ultra-high performance SuperCenter XL benefits from dual 6-3/4" x 8" quadratic planar low frequency radiators, giving it significant low frequency extension and exceptional dynamic range. The SuperCenter XL is perfect for larger home theater systems.

The mega-high-performance SuperCenter Reference is only 35" wide and includes four 5-1/4" High-Definition Cast-Basket Reference Bass/Midrange Drivers with Focused Field Magnet Structures, the GoldenEar Reference High Gauss Neodymium High Velocity Folded Ribbon tweeter, three planar passive radiators, and our unique linear-phase crossover, employing fully balanced technology and precision film capacitors. The unique balanced topology reduces stray capacitance in the magnetic circuit, among other things, with the result of dramatically improved clarity. There are three separate internal chambers: a larger one in the center which contains two 5-1/4" drivers which run up to meet the tweeter and are coupled to the larger, 7" x 10" passive radiator in the center, and two smaller ones which each contain a special 5-1/4" driver engineered for low frequency response, which runs up to 500 Hz, and is coupled to one of the smaller, 6-3/4" x 8" passives.

### SUPERCENTER REFERENCE SPECIFICATIONS\*

**Dimensions:** 35" W x 5-3/4" H x 11" D. **Frequency Response:** 33 Hz – 35 kHz. **Efficiency:** 91 dB. **Nominal Impedance:** 4Ω (Compatible with 8Ω). **Driver Complement:** Four 5-1/4" cast-basket mid/bass drivers with Focused Field magnet structures, Two 6-3/4" x 8" quadratic planar low-frequency radiators, One 7" x 10" quadratic planar low-frequency radiator, One High Gauss Neodymium Reference High Velocity Folded Ribbon Tweeter (HVFR) tweeter. Rec. Amp: 20 – 350 watt/channel.

### SUPERCENTER XL SPECIFICATIONS\*

**Dimensions:** 29" W x 5-3/4" H x 11" D. **Frequency Response:** 36 Hz – 35 kHz. **Efficiency:** 91 dB. **Nominal Impedance:** 4Ω (Compatible with 8Ω). **Driver Complement:** Two 5-1/4" cast-basket mid/bass drivers, Two 6-3/4" x 8" quadratic planar low-frequency radiators, One high-velocity folded ribbon (HVFR) tweeter. Rec. Amp: 20 – 250 watt/channel.

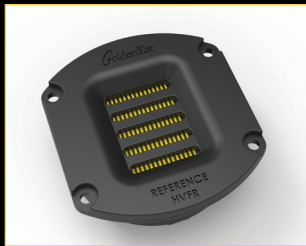
### SUPERCENTER X SPECIFICATIONS\*

**Dimensions:** 20" W x 5-3/4" H x 11" D. **Frequency Response:** 45 Hz – 35 kHz. **Efficiency:** 90 dB. **Nominal Impedance:** 4Ω (Compatible with 8Ω). **Driver Complement:** Two 5-1/4" cast-basket mid/bass drivers, One 7" x 10" quadratic planar low-frequency radiator, One high-velocity folded ribbon (HVFR) tweeter. Rec. Amp: 20 – 200 watt/channel.

*\*Specifications are subject to change without notice.*



## STATE-OF-THE-ART GOLDENEAR DRIVERS



HIGH-VELOCITY FOLDED RIBBON TWEETER (HVFR).

REFERENCE HIGH GAUSS NEODYMIUM HVFR (SUPERCENTER REFERENCE ONLY)



5.25" HIGH-DEFINITION MVPP BASS/MIDRANGE DRIVER.

FOCUSED FIELD MAGNET STRUCTURES (SUPERCENTER REFERENCE ONLY)



5.25" HIGH-DEFINITION BASS/MIDRANGE DRIVER WITH FOCUSED FIELD MAGNET STRUCTURES (SUPERCENTER REFERENCE ONLY)



QUADRATIC PLANAR INFRASONIC RADIATOR