

General Uses

Gardening, spraying disinfectants & pesticides.

Sprayer Parts

● Can be removed easily for pouring liquid

● Can be adjusted to change the mist size
Nozzle

● See-through tank

Pump

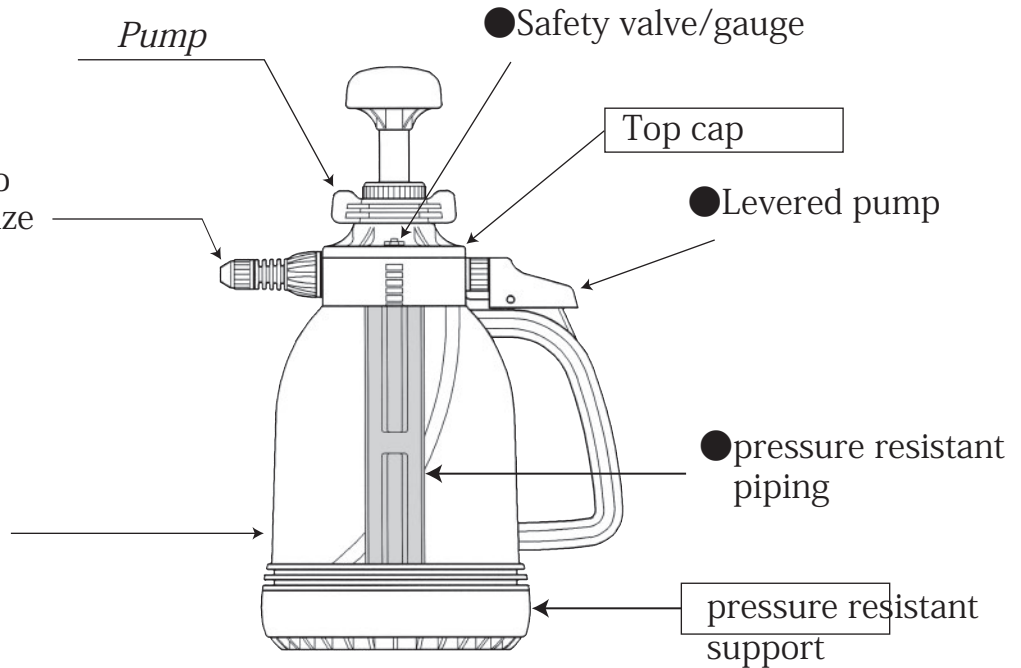
● Safety valve/gauge

Top cap

● Levered pump

● pressure resistant piping

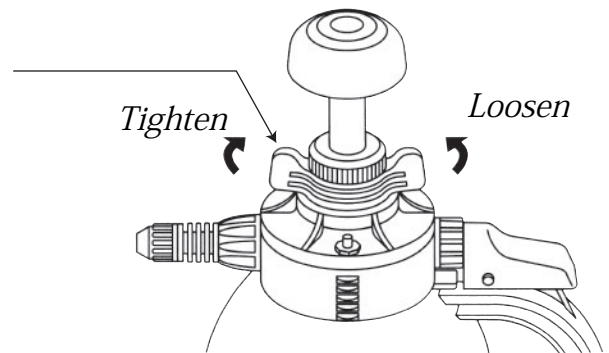
pressure resistant support



How to Use

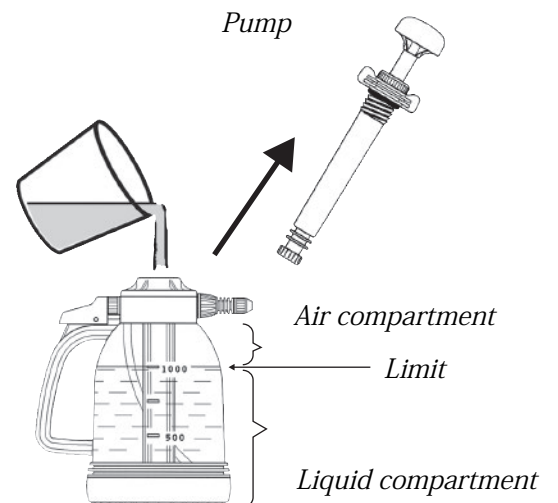
1 Turn the pump handle counter-clockwise, and remove from sprayer

• Turn the winged area



2 Pour liquid into tank

- Only fill the sprayer up to the 1 liter mark
- If you are using chemicals, follow the required dilution levels.
- If you are using a powder based material, make sure the solution is well mixed beforehand.



3 Replace the pump, turning it clockwise.

- Be sure to tighten, so there is no leakage of air or liquid.

4 Holding the top end of the pump, start pressurizing the sprayer

- Once pressurizing starts, the yellow safety gauge will pop up.

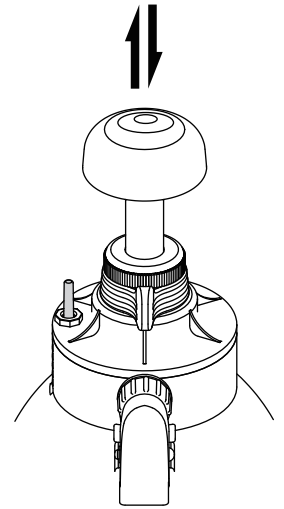
When the pressure reaches 330 k Pa, valve will open and release air.

Stop pumping when this happens.

- With 1 liter of liquid, the valve will open after approximately 20 pumps

- 0.75 liters --> 42 pumps

- 0.5 liters --> 65 pumps

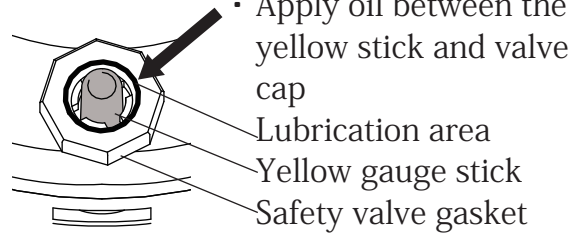


<Troubleshooting the safety valve>

Apply oil to the gauge stick (yellow)

※Any oil can be used, but avoid organic solvents

- Replace safety valve gasket if lubrication does not work



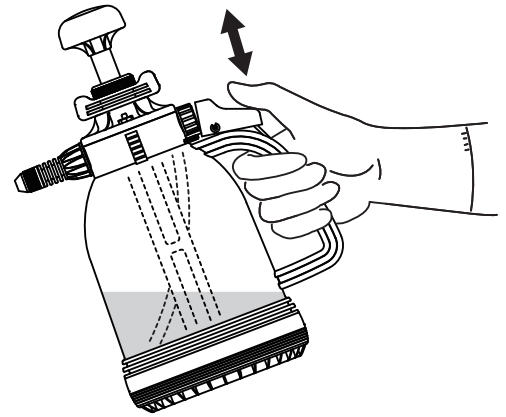
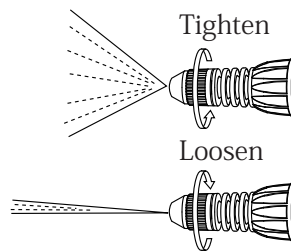
※To replace: go to Page 6 "Taking apart your sprayer"

5 Spraying

- Hold down the lever to spray, release to stop
- Hold the sprayer at an angle (image) to use up the liquid

< Adjusting the spray angles >

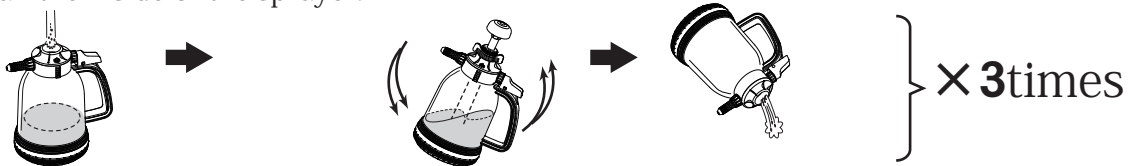
- Tightening the nozzle will create a finer & wider mist.
- Loosening the nozzle will create a rougher & narrow mist, and further loosening will create a direct/straight mist



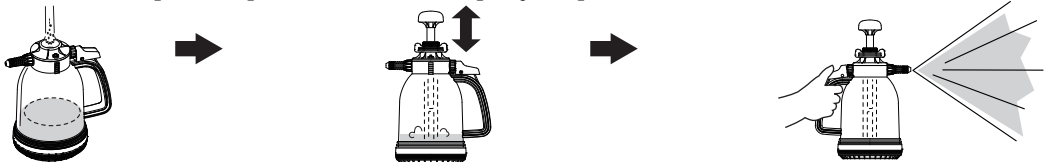
Aftercare

※Always clean the sprayer after each use.

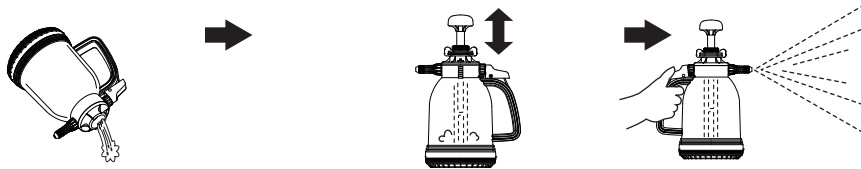
① Using tap water, clean the inside of the sprayer.



② To clean the piping and nozzle, put tap water into the sprayer, pressurize, and mist for 1 minute.



③ Empty out the sprayer and pressurize again, to spray out the remaining liquid in the pathway



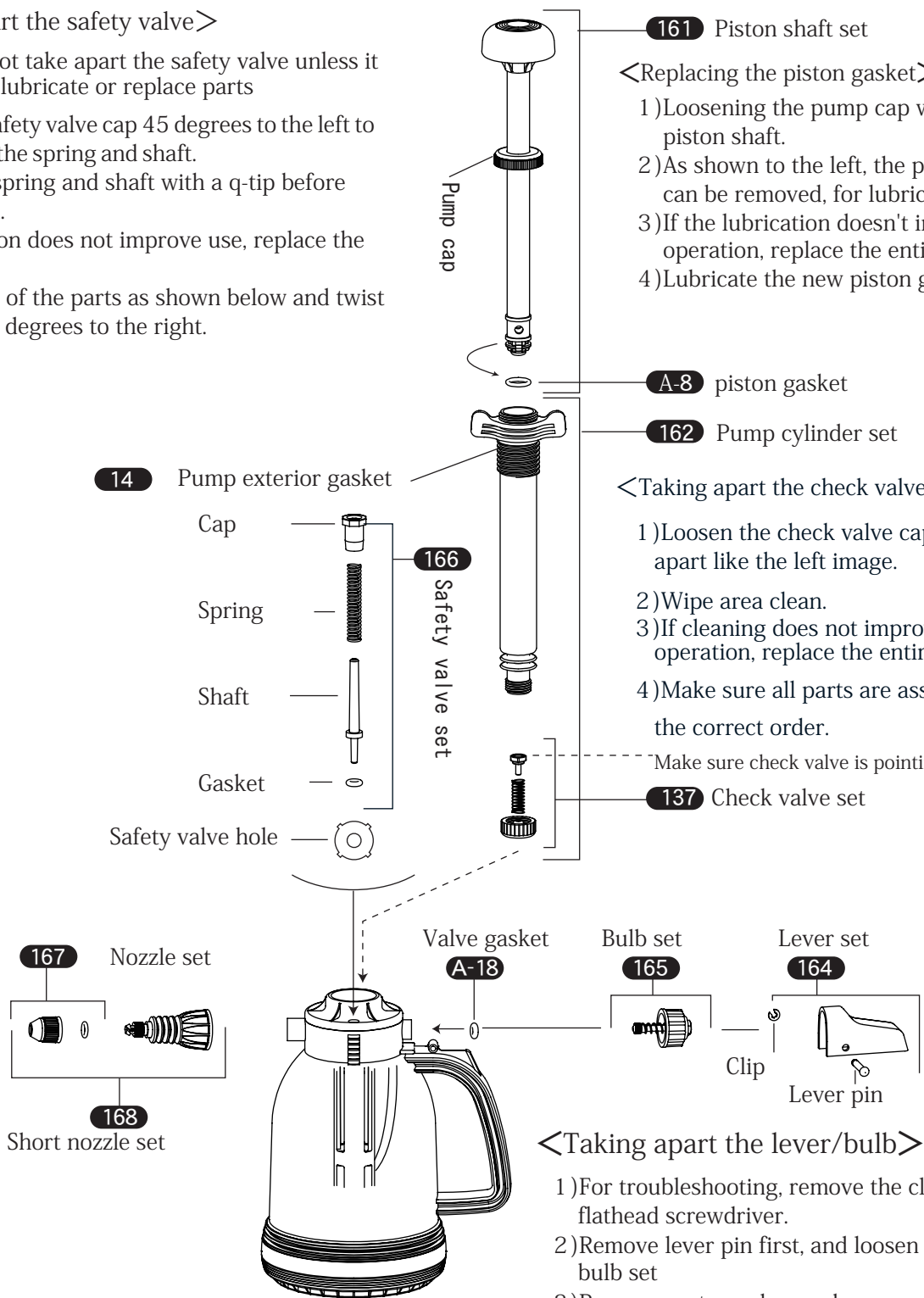
Sprayer Parts/Troubleshooting

<Taking apart the safety valve>



Do not take apart the safety valve unless it is to lubricate or replace parts

- 1) Turn the safety valve cap 45 degrees to the left to take apart the spring and shaft.
- 2) Clean the spring and shaft with a q-tip before lubrication.
- 3) If lubrication does not improve use, replace the set. (166)
- 4) Replace all of the parts as shown below and twist the cap 45 degrees to the right.



<Replacing the piston gasket>

- 1) Loosening the pump cap will release the piston shaft.
- 2) As shown to the left, the piston gasket can be removed, for lubrication.
- 3) If the lubrication doesn't improve operation, replace the entire set (162)
- 4) Lubricate the new piston gasket well.

<Taking apart the check valve>

- 1) Loosen the check valve cap and take apart like the left image.
- 2) Wipe area clean.
- 3) If cleaning does not improve the operation, replace the entire set. (137)
- 4) Make sure all parts are assembled in the correct order.

Make sure check valve is pointing down

<Taking apart the lever/bulb>

- 1) For troubleshooting, remove the clip using a flathead screwdriver.
- 2) Remove lever pin first, and loosen the cap of the bulb set
- 3) Remove parts as shown above.