



# Price List

EFFECTIVE 1 MARCH 2022

avenir®



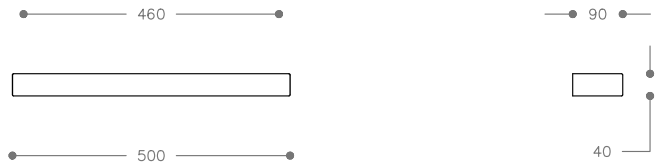
# Curv

Curv Single Heated Towel Rails are created from rectangular stainless steel profiles with a soft square aesthetic. The design offers flexibility in the number and positioning of the rails. Curv utilises a low voltage supply, making it safe to install in wet areas.



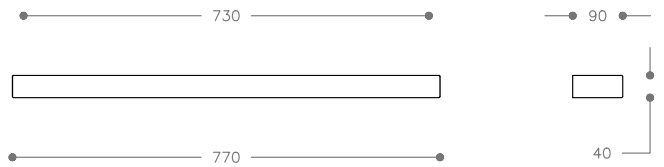
## FEATURES

- ✔ Warranty 10 Years (12 Months on Transformers, Timers & Labour)
- ✔ Ultra safe low voltage - 24V SELV Transformer (Sold separately)
- ✔ Standards: AS/NZS 60335.2.43, IPx5 Rating
- ✔ Replaceable heating elements



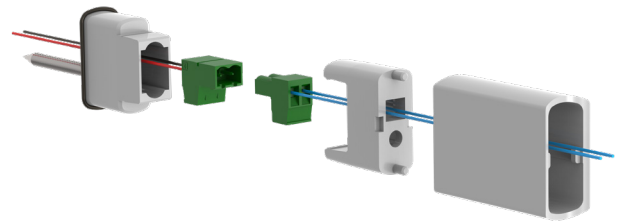
## SIMPLIFIED INSTALLATION SYSTEM








- ✔ Mounting template and diamond drill bit supplied
- ✔ Concealed wiring through either leg
- ✔ No in-wall kit required
- ✔ ClickOn wall fixings / electrical connection (No grub screws)



## ORDERING INFORMATION

- ✔ Transformer sold separately (TRTR200-24V - Max 6 rails)
- ✔ Optional transformer (TRTR100-24V - Max 3 rails)
- ✔ Timer recommended (Not Included)
- ✔ Stocked in all finishes and sizes as shown



    	 <p>Australian Manufacturer</p>	 <p>10 Year Warranty</p>
---	--	---

ClickOn Fixing / Electrical Connection



**TRH2-50**

Heated Towel Rail - 50cm  
Transformer sold separately  
Max 6 rails per transformer

**\$251**     



**TRH2-77**

Heated Towel Rail - 77cm  
Transformer sold separately  
Max 6 rails per transformer

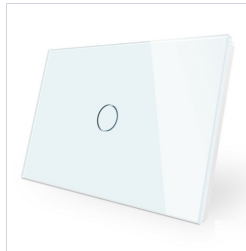
**\$272**     



**TRTR200-24V**

Transformer 24V/200VA  
Max 6 rails / transformer  
Adjustable Output +-25% rail heat

**\$162**



**UWTS-1G\_W**

WiFi Timer 1-Gang White  
Available 2/3 Gang (UWTS-2/3-W)  
Program using the phone app

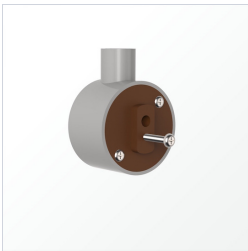
**\$79**



**UWTS-1G\_B**

WiFi Timer 1-Gang Black (34350076)  
Available 2/3 Gang (UWTS-2/3-B)  
Program using the phone app

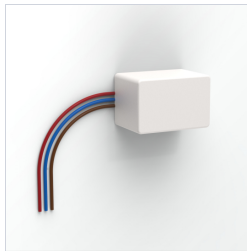
**\$79**



**TRCF-M**

In-Wall Kit  
Required for masonry walls

**\$52**



**UTMD001**

Eco-Timer  
Installed behind a std wall switch  
Programmed using the wall switch

**\$49**