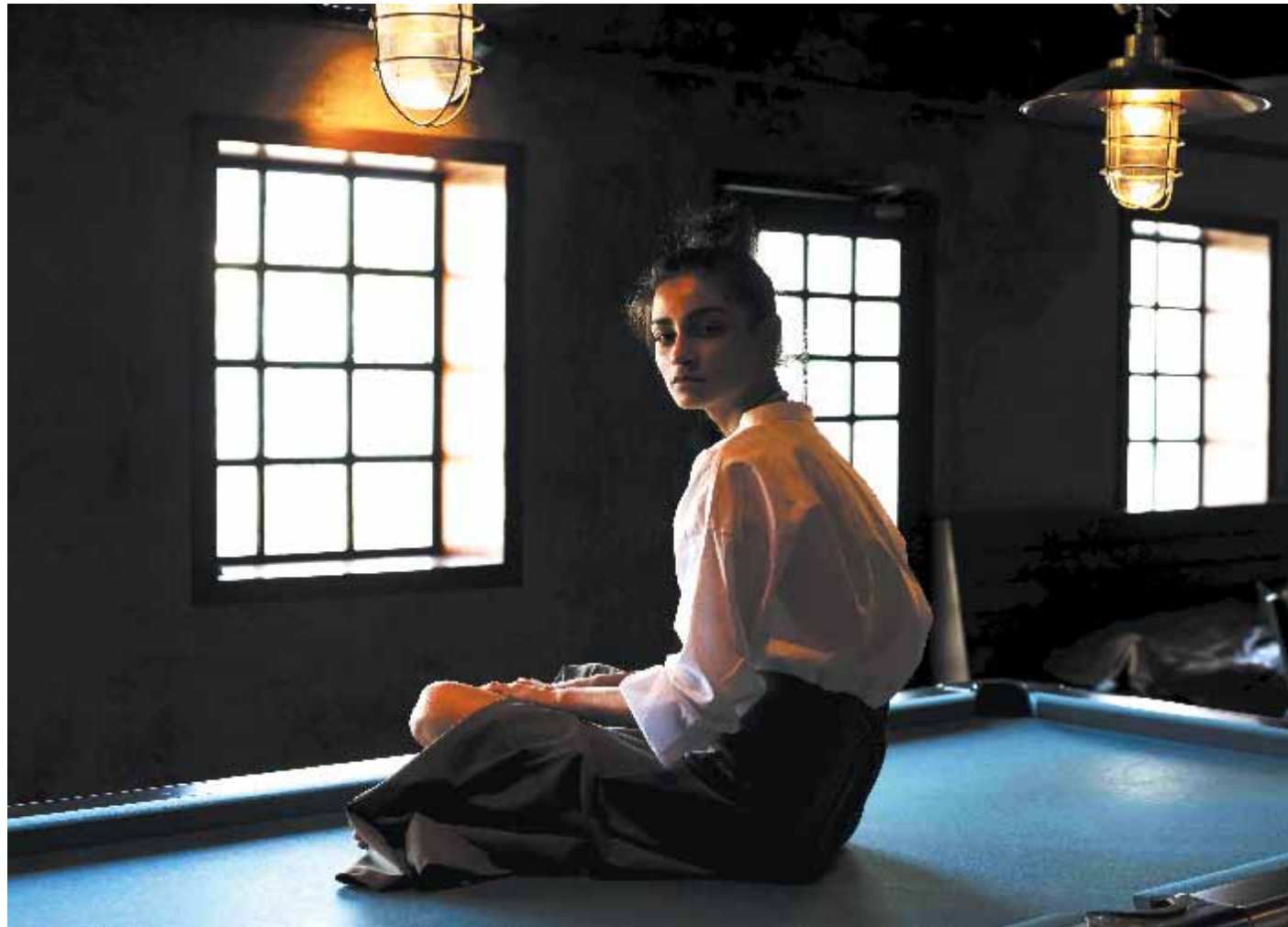


THREE

THREE - SS16

Summer 2016 – ‘LINE UP’ is about effortless white classics with an interesting twist of navy perennial stripes. The collection is inspired from the simplicity, beauty and our love for white.

This summer we recommend heavy layering of some cotton and poplin layers mixed with navy asymmetric stripes. Sticking to brands identity the collection showcases contrast of anti—fit silhouettes and sharp tailoring.



S16 - S01
S16- SK04



S16 - JS01
S16 - J04





S16 - S - 03
S16 - SK01

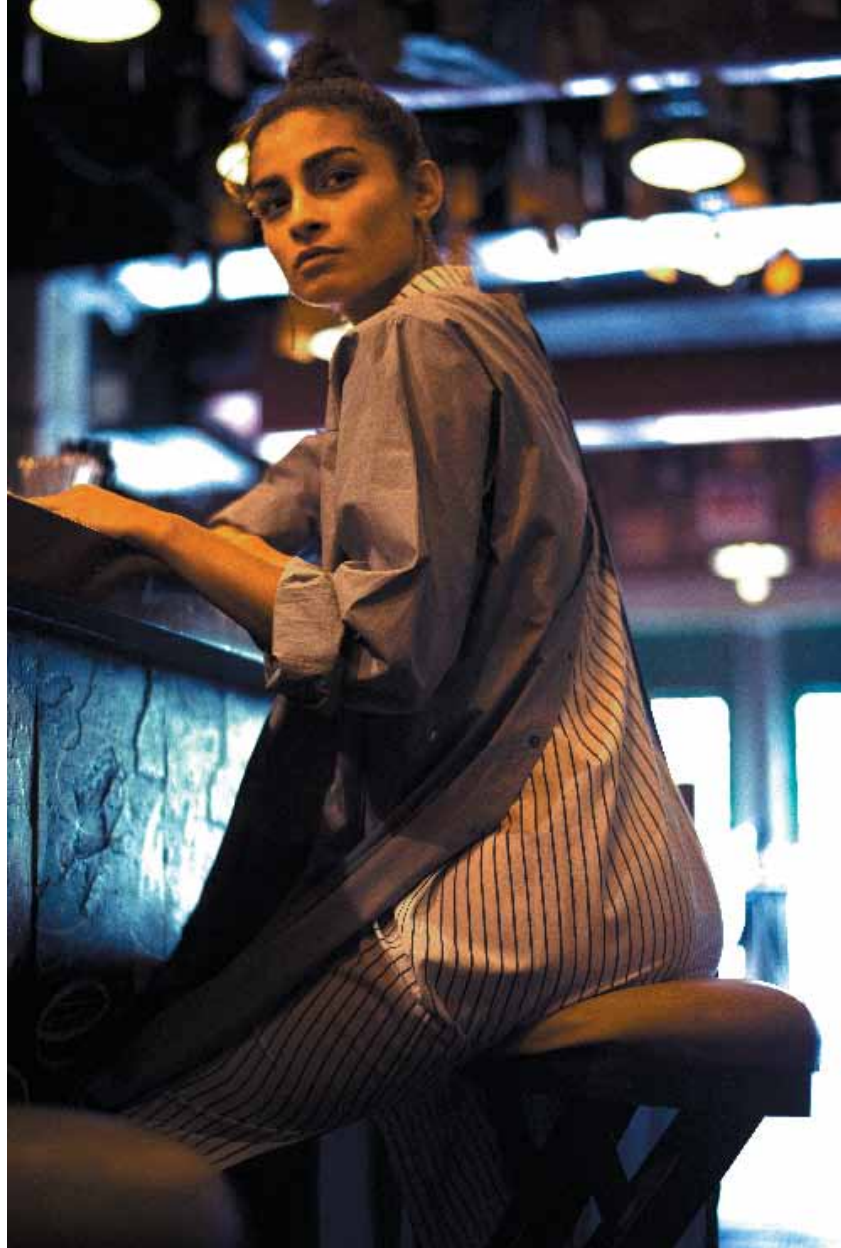




S16 - D05



S16 - D06
S16 - S04





S16 - D01
S16 - BO5







S16 - S05
S16 - SK05
S16 - J07





S16 - S02
S16 - J03
S16 - B04





S16 - S07
S16 - SK02
S16 - B02





Model: Rodali Dutta
Photograph: Sharad Shrivastav
Location Courtesy: Monkey Bar, New Delhi
Jewellery by: Kichu
Email: three.contactus@gmail.com
+91- 8860201966