

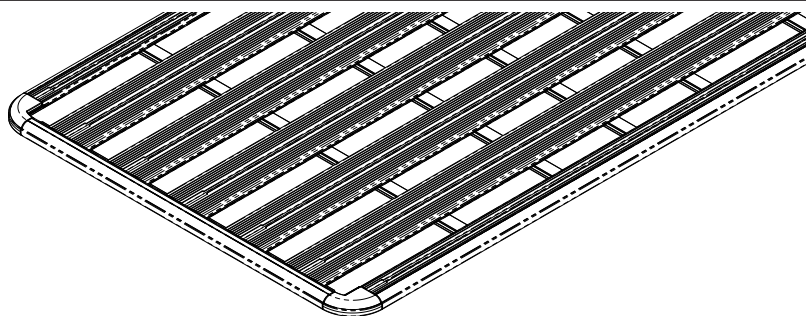


RHINO-RACK

Rhino Pioneer SXB Conversion Kit (43135 & 43136)

Place these instructions in the vehicle's glove box after installation is complete.

Important: Please read these instructions carefully prior to installation.
Check the contents of this kit before commencing fitment and report any discrepancies.
Place these instructions in the vehicle's glove box after installation is complete.



Pioneer Platform Not Included

You must purchase one of the following platform models to be used with this kit:

Kit	Suits Platform
43135	42100B & 42102B
43136	42101B & 42103B



Care Instruction: Wash vehicle rails prior to installing Rhino Pioneer SXB Platform.

Important Information

Maximum carrying capacity: Refer vehicle manufacturer specifications, less weight of alloy tray below (includes leg kits):
(42100B = 19.5kg, 42101B = 22.5kg, 42102B = 25kg, 42103B = 29.5kg)

Recommendations:

It is essential that all bolt connections be checked after driving a short distance when you first install your cross bars. Bolt connections should be checked again at regular intervals (probably once a week is enough, depending on road conditions, usage, loads and distances travelled). You should also check the alloy tray each time it is re-fitted. Make sure to fasten your load securely. Please ensure that all loads are evenly distributed and that the centre of gravity is kept as low as possible.

Use only non-stretch fastening ropes or straps.

Sensitivity to cross winds, behaviour in curves and braking.

The handling characteristics of the vehicle, changes when you transport a load on the roof. For safety reasons, we recommend you exercise extreme care when transporting wind-resisting loads; special consideration must be taken into account when braking.

Please remove cross bars when putting vehicle through an automatic car wash.

Load Ratings:

Maximum permissible load is set by the vehicle manufacturer less the weight of trays above (weights above include leg kits). When alloy trays are to be used in off-road conditions, please build a safety factor of 1.5 into this load limit. Although the alloy trays are tested and approved to AS1235-2000, Australian road conditions can be much more rigorous. However, increasing the number of mount points to the vehicle does not increase the vehicles maximum permissible roof loading.

Note for Dealers and Fitters:

It is your responsibility to ensure instructions are given to the end user or client.

Rhino-Rack
3 Pike Street, Rydalmere,
NSW 2116, Australia.
(Ph) (02) 9638 4744
(Fax) (02) 9638 4822

Document No: R337
Prepared By: Nigel Greig
Authorised By: Chris Murty

Issue No: 04
Issue Date: 23/01/2017

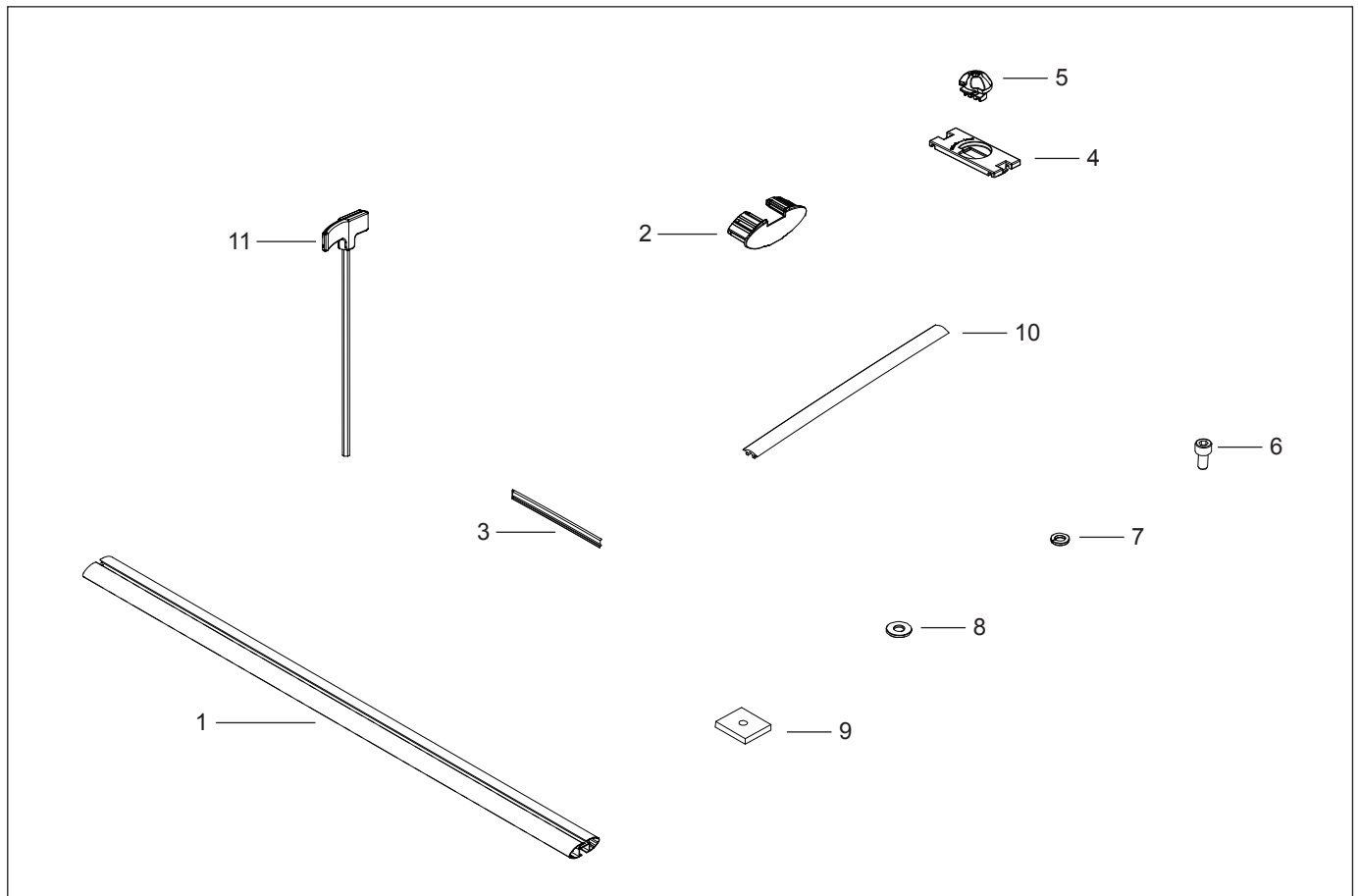
These instructions remain the property of Rhinorack Australia Pty Ltd and may not be used or changed for any other purpose than intended.



Rhino Pioneer SXB Conversion Kit

Parts List

Item	Component Name	Part No.	Quantity	
			43135	43136
1	Crossbar	A614/A615	2	2
2	Pioneer SXB Endcap	M562	4	4
3	Under Bar Strip	M641	4	4
4	AT Locking Tab	M136	6	8
5	AT Locking Tab Knob	M137	6	8
6	M6 x 12mm Cap Screw	B188	4	4
7	M6 Spring Washer	W004	4	4
8	M6 x 16mm Flat Washer	W031	4	4
9	Plate Nut	N057	4	4
10	Rubber Buffer Strip - 125mm	R011	4	4
11	Torque Allen Key - Long	TORKEY-L	1	1
12	Fitting Instructions	R337	1	1



Tools Required

- Electric Drill
- Tape Measure
- Pilot Drill (eg. 3mm)
- 8mm Drill Bit
- Stanley Knife or Cutters
- Rubber Mallet
- 5mm Security Allen Key (provided in kit)



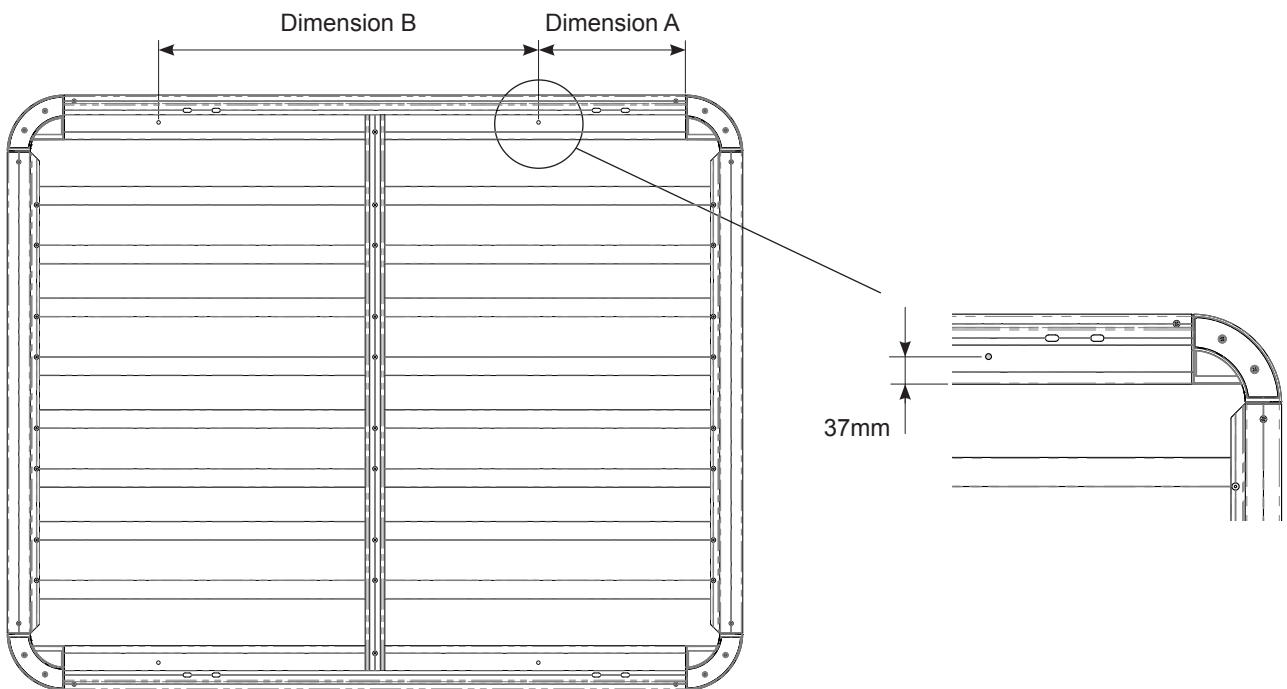
Rhino Pioneer SXB Conversion Kit

1 Measure and Drill Sides of Alloy Tray

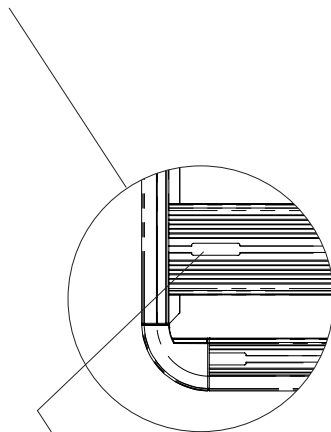
Place the Pioneer alloy tray upside down in your work area. It may be advisable to sit the tray on top of the packing box to protect the tray from scratches.

Refer to **Appendix A** for the appropriate measurements to suit your vehicle and tray size.

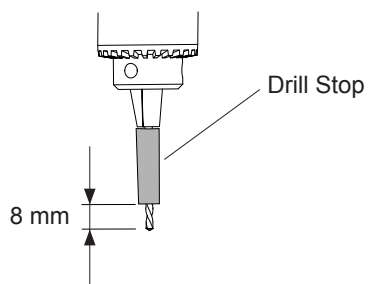
Measure and mark the 4 drill locations on both sides of the Alloy Tray. Drill with a pilot hole and then drill an $\text{\O}8\text{mm}$ hole using a drill stop (as shown below).



Rear of Tray



Slots on top of tray indicate FRONT



Drill depth stop.

Round piece of wood or plastic of larger outer diameter than the hole being drilled. 8mm hole through centre.



Rhino Pioneer SXB Conversion Kit

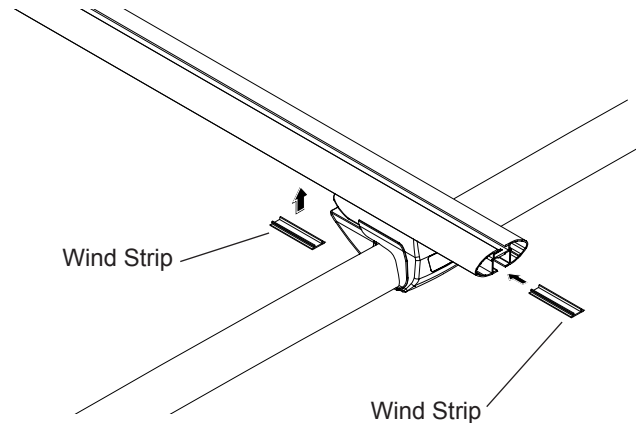
2 Fit SXB Legs and Crossbars to Vehicle

Refer to the fitting instructions provided with the SXB leg kit and proceed to fit the crossbars to the vehicles rails.

Note: Refer to **Appendix A** in this document for the appropriate crossbar locations to suit your vehicle.

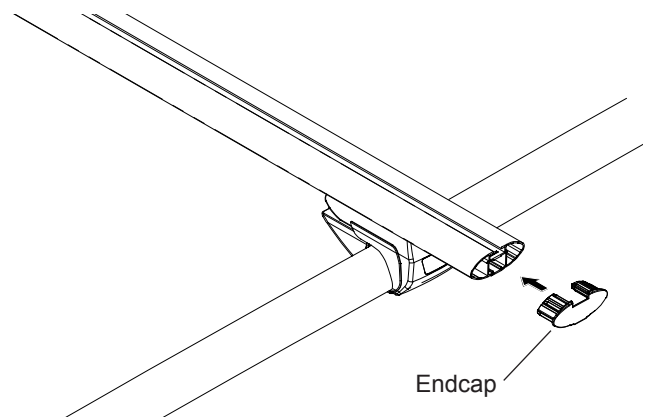
3 Cut and Insert Wind Strips

Measure the gaps underneath the crossbar on either side of the legs and cut the wind strips to the appropriate size. Insert the wind strips as shown below.



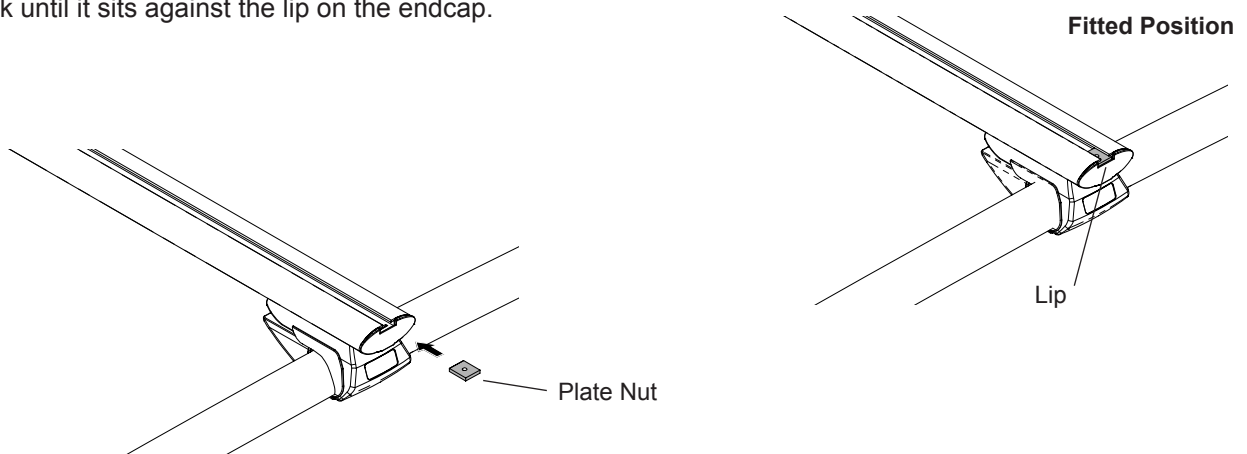
4 Insert Endcaps into Crossbars

Insert the endcaps into the ends of each crossbar as shown below. You may need to use a rubber mallet.



5 Insert Plate Nut into C Channel

Insert a plate nut into each end of the crossbars sliding it over the lip on the endcap. Once inserted slide the plate nut back until it sits against the lip on the endcap.

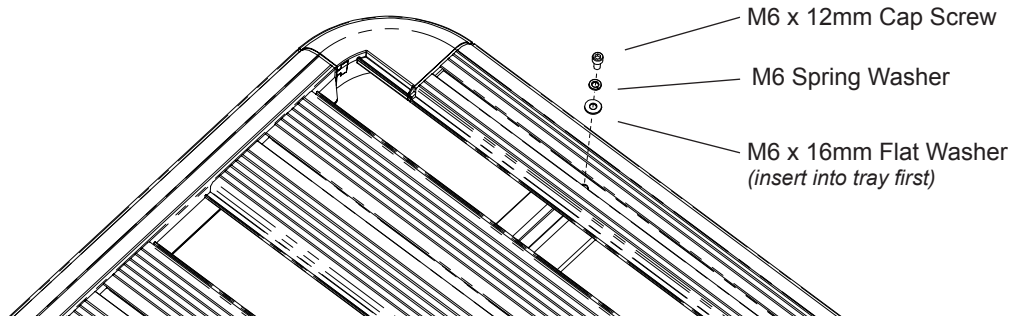




Rhino Pioneer SXB Conversion Kit

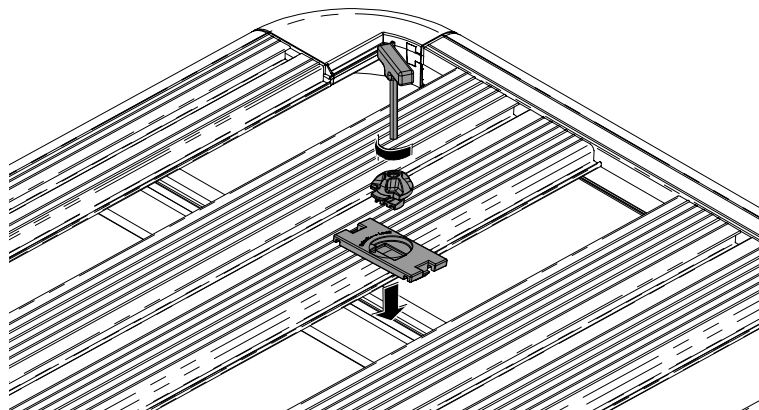
6 Slide Pioneer Tray onto Crossbars and Fit Hardware

Slide the Pioneer Alloy Tray onto the crossbars from the side of the vehicle. The crossbars should sit within the tray. Align the holes (drilled in Step 1) with the channel nuts placed in the ends of the crossbars and fasten the tray in position with the hardware shown below.



7 Fix Planks to Crossbars using Lock Tab Plates

Place a lock tab plate in the cross bar between each Plank. Place the securing knob into the lock tab plate and rotate the Knob 90° with the allen key provided. Repeat till all Planks are secured to the cross bars.



8 Fit Buffer Strip to Remaining Exposed C Channel

Measure and cut to size the rubber buffer strip to fill the remaining exposed C Channel within the crossbars. Push the buffer strip into the C Channel until completely inserted.

