

Newbie gingerbread house



newbie

Instructions

Bake or buy gingerbread dough.

Cut out all the parts. Two of each house façade and six supports.

Roll out the dough so that it is 2–3 mm thick.

Place the printed parts on the dough and cut the dough to shape.

Bake the parts in the oven.

Leave the parts to cool completely before you start to build.

Melt sugar in a pan. Do not stir too much.

Dip the house façades in the melted sugar and start building your house using the template to guide you.

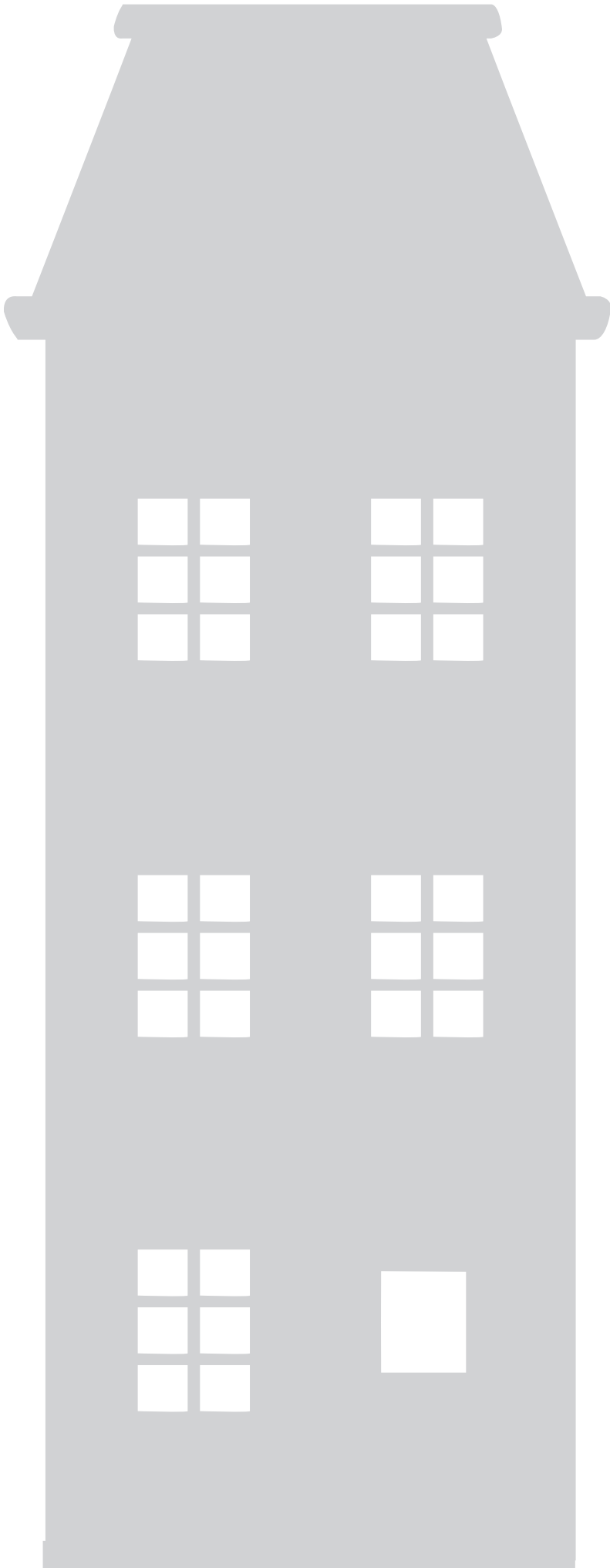
Time to decorate. Release your creative magic!

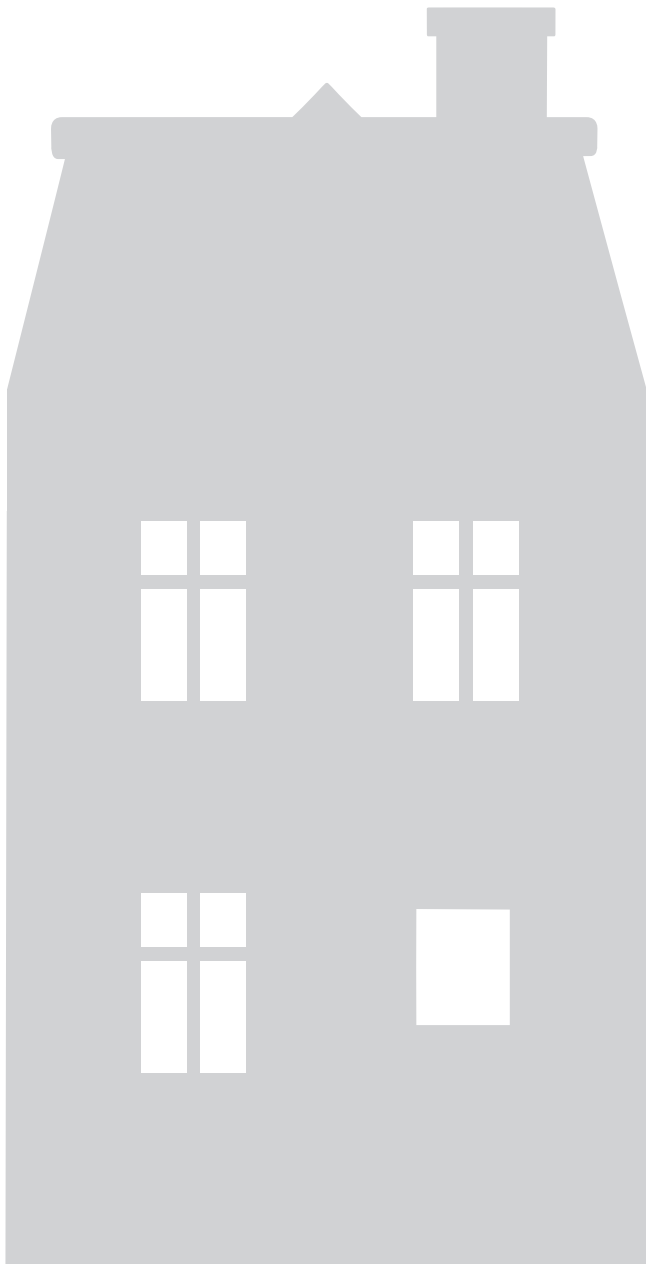
Make your icing by whisking 4 decilitres of icing sugar with 1 tsp vinegar essence and 1 egg white.

When your gingerbread house is ready, share the magic on Instagram and tag [@newbielovers](#) [#newbielovers](#) to spread the joy of Christmas

newbie

newbie





newbie