

SKIGO

NEW!

POWER STRAP 1.0

Read more on page 28

RACE BASKET - SUPER LIGHT

Read more on page 29

NEW!

We continue working with our pole lineup and from last year's success we are even more satisfied with the results we have achieved. Try it yourself and you will feel the difference!

SKI TEAM SWEDEN X-COUNTRY

Uses SKIGO wax products

FINNISH NATIONAL TEAM

SKIGO, a new main sponsor of the Finnish national team with ski waxes.

WWW.SKIGO.SE



” I TURN 50 THIS WINTER, AND IT FEELS EXTREMELY EXCITING TO LOOK BACK UPON ALL THE YEARS I’VE SPENT WITHIN SKIING. AND AT LEAST AS EXCITING TO LOOK FORWARD TO THE DEVELOPMENT THAT WE AT SKIGO HAVE AHEAD OF US.”

I took part in my first ski race at the age of 8; a school competition back home in Kiruna. My first real victory came when I was 10, at the District Championships. It was then that I decided that skiing was something I wanted to do. If you’re a child and you want to practise sports, it’s important to have committed parents. In my case, my parents were behind me and supported me the whole way. My Dad took a keen interest in waxing and spent a long time mixing different ski waxes and searching for better combinations than the ones that were already available on the market. Finally, he started cooking up some of his own recipes in our garage at home, and I helped him.

When I started coming to the end of my career in the middle of the 1990s, after one World Championship gold, two World Championship silver medals, two World Championship bronze medals, one Olympic bronze at the 1992 Olympics and a second place at the 1997 Vasaloppet Race, my thoughts started turning to what I should do next. I had been interested in waxing ever since I had helped Dad create his own recipes. And we knew that it was possible to manufacture better products than those that were already on the market. That’s why I bought SKIGO in 1995, and this is the path that my life took after that.

Many years of experience have taught me that there are three factors at play when it comes to generating optimum glide. The skis and their design, the base

and the choice of grinding and, last but not least, the ski wax.

Many ski wax experts enjoy turning waxing into something intricate and complicated. We at SKIGO – and I personally – want to make waxing simple at all times. But naturally without jeopardising quality.

I’m also aware that our dealers really like our products and that they know them inside out. So you can always ask the guys at the shop what is most suitable for your particular case.

We at SKIGO “live” with skiing. I myself travel all the time to see competitions, both elite and youth competitions, as well as recreational races. This year it will be the Kalle Anka Cup with my children one week and the Olympic Games in Sochi the following week.

We’ll probably see each other somewhere during the year. Don’t be shy, come up to me and let’s talk about waxing!

See you this winter!



Christer Majbäck

Christer Majbäck

SKI*GO





TABLE OF CONTENTS

GLIDE WAX TOPCOATS	6-7
GLIDE WAXES	8-9
KICK WAXES & KLISTER WAXES	12-14
EASY LINE CONCEPT	16-17
WAXING TOOLS	18-25
WAXING TABLE	26-27



POLES & ACCESSORIES.....	28-33
ROLLER SKIS & ACCESSORIES	34-37
GLOVES.....	38-39
CLOTHING	42-44
EXTRAS.....	45
INFORMATION & TABLES	46-51

GLIDE WAXES AND TOPCOATS

EVERYONE IS TALKING ABOUT GLIDE. OUR SIMPLE AND CLEAR GLIDE CONCEPT HAS BEEN USED BY THE WORLD'S ELITE AND ALL MAJOR NATIONAL TEAMS FOR MANY YEARS. NO MATTER HOW MUCH EFFORT YOU'D LIKE TO PUT INTO YOUR GLIDE, SKIGO ALWAYS OFFERS AN EXCELLENT OPTION.

FLUORO FLUID GLIDE WAX TOPCOATS

Our fluoro suspensions are the easiest Topcoats to apply.

The best solution in old and aggressive snow. Otherwise, use powder.

Properly applied liquids have equivalent durability to ironed powders.

FLUID	SNOW TYPE	TEMP °C
C110 fluid	all	-10 – -25
C105 fluid	fine, old	-4 – -15
C55/C99 fluid	fine, new snow	-2 – -10
C44/7 fluid	coarse snow	+2 – -9
C22 fluid	all	+15 – -2
CM10 fluid	old, coarse snow	-2 – +20



C110 FLUID After last year's success at the World Cup, we have chosen to promote C110 in the Fluid family. C110 is an excellent choice in all types of snow and at temperatures below -10°C. Perfect for both the World Cup and long-distance races.

FLUORO POWDER GLIDE WAX

Our fluoro powders are widely used and popular with both national teams and the world elite. The long-distance competitors' favourite.

POWDER	SNOW TYPE	TEMP °C
C110 powder	all	-10 – -20
C105 powder	fine, new snow	+1 – -15
C44/7 powder	coarse snow	+1 – -14
C22 powder	all	+22 – +1



FLUORO SOLID GLIDE WAX TOPCOATS

CM10: Our fluoro block for racing. Best results on old, coarse snow and at warm temperatures. Prepare the skis first with LF graphite and a matching HF wax. Rub on a thin and even layer of CM10. For distances of more than 5 km, warm the CM10 with a waxing iron at approx. 160 °C. Otherwise cork in with natural cork. Finish by carefully brushing the skis.



SOLID	SNOW TYPE	TEMP °C
CM10	all	-2 – +20

Fluoro blocks give great speed for 5km and are used alone for races of no more than 5 km or on top of ironed powder. The obvious youth competition alternative.

SOLID	SNOW TYPE	TEMP °C	AIR HUMIDITY
C110 solid	all	-10 – -20	70-100%
C105 solid	fine, new snow	+1 – -20	70-100%
C44/7 solid	all except new snow	+3 – -9	60-100%
C22 solid	Top Universal Block!	+20 – -4	60-100%



COLD POWDER GLIDE WAX

Synthetic powder for cold conditions that works best in aggressive snow at temperatures from just below freezing to -25°C. Warm with a waxing iron like a normal paraffin wax.

	SNOW TYPE	TEMP °C	AIR HUMIDITY
P16	artificial snow, aggressive snow	-4 – -25	65-100%
C75	old snow	-7 – -20	40-70%
C380	cold, dry and abrasive snow	-7 – -20	0-60%



TIP: To achieve exactly the right temperature and thereby the best effect when you're using topcoat products, we recommend a digital waxing iron.

FOR MORE WAXING TIPS, SEE PAGES 46 TO 51.

GLIDE WAX BASIC HF 45 G/200 G

Our competition wax. Glide wax with high fluoro content for air humidity of more than 65%. Spread and warm into the ski base using a waxing iron. Available in 45 g or 200 g packages.

HF GLIDE WAX	SNOW TYPE	TEMP °C
HF Green	all	-7 -- -20
HF Blue	new snow	-3 -- -10
HF Violet	old snow, aggressive snow	-1 -- -12
HF Red	coarse snow, artificial snow	+1 -- -5
HF Orange	all	+1 -- -5
HF Yellow	all	+20 -- -1
HF Universal	all	+2 -- -20



GLIDE WAX BASIC LF 60 G/200 G

Fluoro glide wax intended for air humidity of between 50 and 70%. Spread and warm the wax into the ski base using a waxing iron. The perfect glide wax for both training and competition. Available in 60 g or 200 g packages.

BEST SELLER

LF GLIDE WAX	SNOW TYPE	TEMP °C
LF Graphite	universal underlayer!	all
LF Green	all	-7 -- -20
LF Blue	new snow	-3 -- -10
LF Violet	old snow, aggressive snow	-1 -- -12
LF Red	coarse snow, artificial snow	+1 -- -5
LF Orange	new to older snow	+1 -- -5
LF Yellow	all	+20 -- -1



GLIDE WAX BASIC XC 60 G/200 G

A series of standard waxes for all temperatures and snow types. For humidity of 0 to 100%. Spread and warm into the ski base using a waxing iron. Choose between 60 g or 200 g package.

BEST SELLER

XC GLIDE WAX	SNOW TYPE	TEMP °C
XC Graphite	universal underlayer!	all
XC Green	all	-7 -- -20
XC Blue	new snow	-3 -- -10
XC Violet	old snow, aggressive snow	-1 -- -12
XC Red	coarse snow, artificial snow	+1 -- -5
XC Orange	new to older snow	+1 -- -5
XC Yellow	all	+20 -- -1



WAXING TIP: Always prime the ski with XC Graphite during waxing in order to increase durability. For competitions, we recommend LF Graphite.

GLIDE WAX SERVICE PACK – 1 KG

We offer a big 1 kg package for high-volume waxers.
Cleaning (yellow), saturation (violet) and training (blue).



GLIDE WAX BASIC – CLEANING & SATURATION – 250 G

For cleaning and saturation of the base. Low melting temperature.



FOR CLEANING TIPS, SEE PAGE 49.

KICK WAXES AND KLISTERS

KICK WAX OR KLISTER? WORLD CUP RACE OR SKI TOUR? REGARDLESS, YOU WANT GOOD GRIP WITHOUT ANY ADVERSE EFFECT ON GLIDE. HERE YOU'LL FIND EXACTLY WHAT YOU'RE LOOKING FOR.

HF KICK WAXES

Competition waxes with high fluoro content that cover the whole range. Fluoro is used because it maintains the properties of the wax much longer.



HF KICK WAXES	INFORMATION	TEMP °C
HF Blue	Wide temperature range. Not recommended in new snow. Generously apply 4 to 6 layers.	-1 / -20
HF Violet	Designed for new and fine snow. For use in high air humidity.	-2 / -15
HF Red	For all snow types. Generously apply 4 to 6 layers.	+1 / -3
HF Yellow	For all snow types.	+5 / -1

LF KICK WAXES

Fluoro-based kick waxes. Perfect for training and competition.



LF KICK WAXES	INFORMATION	TEMP °C
LF Violet	A versatile wax suitable for all types of snow.	0 / -6
LF Orange	Dirt-repellent and more frost-resistant than XC Orange.	+3 / -2

BASE KICK WAX

The base binder wax that is always applied on the ski base for extra durability.



BASE KICK WAX	INFORMATION	TEMP °C
Base	For all snow types	All
Base spray	For all snow types	All

XC KICK WAXES

The base in our range. Easy to make the right choice. Perfect for training.



XC KICK WAXES	INFORMATION	TEMP °C
XC Green	For all snow types in cold conditions. Also a good overlayer on other kick waxes in abrasive snow.	-7 / -20
XC Blue	A kick wax for coarse snow. Very durable.	-3 / -10
XC Violet	A versatile wax suitable for all types of snow.	-1 / -9
XC Red	Kick wax for all snow types. Distinct grip.	0 / -2
XC Orange	The perfect kick wax for temperatures around 0°C.	+3 / -2
XC Yellow	Our warmest kick wax. If it doesn't work, then you should switch to klister. Best for coarse snow.	+5 / -1

HF KLISTER

Klister with high fluoro content. Used for competitions and in dirty conditions.



HF KLISTER	INFORMATION	TEMP °C
HF Universal	+10 - 0°C - all types of snow, 0 - -5°C suitable for coarse snow	+10 / -5
HF Violet	Klister with high fluoro content for coarse snow.	+2 / -2
HF Yellow	HF Yellow. Fluoro-based klister for all snow types. Perfect on glazed trails.	+20 / +3

XC KLISTER

Our base range for all Klister conditions.



XC KLISTER	INFORMATION	TEMP °C
XC Blue	Very durable klister designed for low temperatures.	-2 / -10
XC Violet	Good base klister for changing surface conditions.	+3 / -4
XC Universal	A versatile klister wax for changing surface conditions. Also suitable for coarse snow at temperatures below freezing.	+3 / -4
XC Silver	The klister wax that works equally well above and below freezing. Ideal when mixed with XC Red and XC Orange to ensure extra grip at temperatures above freezing.	+3 / -1
XC Red	An excellent match when snow changes from frozen to wet.	+5 / +1
XC Orange	An excellent match for slippery tracks and wet conditions.	+10 / +3

UNIVERSAL KLISTER SPRAY

Our base range for all klister conditions.

PACKAGE SOLUTIONS

HERE YOU WILL FIND SOME INTELLIGENT WAX PACKAGE SOLUTIONS. SOME OF THE PACKAGES EVEN INCLUDE THE REQUIRED ACCESSORIES. YOU GET EXACTLY WHAT YOU NEED.

VASA BOX PRESEASON ONLY

A perfect box for those of you who intend to take part in a classic marathon race like the Vasaloppet. Contains: Glide: XC Violet, XC Yellow; Kick wax: Base Kick Wax, XC Blue, XC Orange; Klister: XC Violet, XC Universal; Scrapers: klister scraper, 3 mm plastic scraper, groove scraper, waxing tools, Wax Remover 250 ml, Fiberlene, combi brush, synthetic cork.



MAJAN PACK

These four cans give you everything you need when it comes to kick wax. Contains: HF Blue, HF Violet, HF Red, HF Yellow



TOUR PACK

A good start package for those who want a broad temperature range with just three cans. Contains: XC Blue, XC Red, XC Yellow, 1 synthetic cork.



TIP: When applying kick wax, it's better to have several thin layers than one thick one. Cork between each layer.

FOR MORE WAXING TIPS, SEE PAGES 46 TO 51.



EASY LINE CONCEPT

THE KEY WORD IS SIMPLICITY. THE EASY LINE CONCEPT CONTAINS PRODUCTS FOR THOSE WHO DON'T WANT TO WASTE ANY TIME GETTING OUT ON THE SKI TRACK, YET STILL WANT GOOD GLIDE AND GRIP. DESCRIPTIONS IN "IKEA SWEDISH" ARE AVAILABLE ON THE BACK OF THE PACKAGING.

EASY KLISTER PACK

Easy Klister is a universal klister spray. Roughen the ski's kick zone with the back of the klister scraper before spraying a good layer of klister over the kick zone. Works both below and above freezing.

KLISTER SPRAY: Universal klister spray with a wide temperature range both above and below freezing.

**WAX REMOVER
250ML:** For cleaning
the ski's kick zone.



KLISTER SCRAPER: For roughening
and cleaning the ski's kick zone.

FIBERLENE: For wiping off the
ski's kick zone, with or without
Wax Remover.

EASY GLIDE PRESEASON ONLY

Modern quick wax that makes waxing easier. Apply and go – could it be any easier? Instructions for use:

1. Apply a layer over the glide zone. Let it dry for 3 mins.
2. Brush the glide zone with a nylon brush. Ready to go! Easy Glide saturates and protects the base. Unlike other similar products, Easy Glide does not contain any solvents that dry and harden the base. Keep the bottle at temperatures above zero and do not let it freeze. 60 ml, Universal -10/+10 °C.



EASY GLIDE PACK



Package with an Easy Glide and a nylon brush.

EASY GRIP PACK PRESEASON ONLY

Instructions for use: **1.** Use the sandpaper that comes with the scraper to roughen the kick zone. **2.** Apply the kick wax in a thick layer back and forth along the kick zone. Use the yellow can at temperatures above zero and the blue one at temperatures below zero. **3.** Even out the wax with the cork on the bottom of the can. Your skis are now ready to go. Have fun!



EASY LINE BOX

Flexible box containing glide wax, kick wax and all necessary accessories. Contains: Glide: Easy Glide, nylon brush. Kick wax: Easy Grip +/- klister scraper.



PRESEASON ONLY

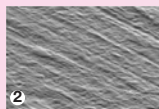
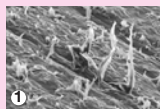
FOR MORE WAXING TIPS, SEE PAGES 46 TO 51.

WAXING TOOLS

JUST AS IN WOODWORKING, YOU GET A BETTER RESULT IF YOU HAVE GOOD TOOLS. SKIGO'S WAXING TOOLS HAVE BEEN DEVELOPED BY FASTIDIOUS WAXERS WITH MANY YEARS OF EXPERIENCE. ASK WHAT IS SUITABLE FOR YOU AT THE SHOP – THEY KNOW SKIGO.

BASE SCRAPER

The Base Scraper scrapes off and removes ridges in the structure of the ski base. It can be compared with a sharp razor blade. Ridges in the structure may be the result of poor stone polishing. They allow easier accumulation of dirt underneath the ski. The Base Scraper is used after grinding the ski. Without applying any pressure, position the Base Scraper on the ski base and pull the handle 1 to 3 times in the running direction. After using the Base Scraper, brush the base with a fine steel brush in order to polish the surface of the ski structure. To get a finely polished surface, finish by sanding 30 to 40 times using Pink Paper. The last couple of strokes must always be in the running direction of the ski. The Base Scraper can also be used for skis with coarse structure used in competitions under cold conditions. Your skis are now ready for waxing!



1. DAMAGED BASE with lots of ridges after poor stone polishing.

2. SAME BASE after use of Base Scraper.



PACKAGE with instructions and tool.

HANDLE with the right weight for maximum effect.

REVERSIBLE BLADE with four sharp edges. Key included.

PINK PAPER SET/REFILL/SERVICE

Pink Paper is extremely fine paper (3 microns) used for polishing and rounding off the structure of the ski base. Used at temperatures from 0 to -20°C – the colder the better – as well as in new snow with aggressive snow crystals. Draw the paper back and forth along the ski base 10 to 15 times and finish by three additional strokes in the running direction. The Pink Paper is the last step of the glide waxing of your skis.



NEW!

3 MM/5 MM PLASTIC SCRAPER

One of the most important tools. Never use a dull scraper.



GROOVE SCRAPER

Designed for scraping ski edges and grooves.



STEEL SCRAPER



KICK & KLISTER SCRAPER

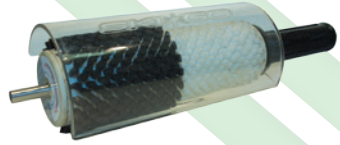
Designed for kick wax removal. Use the sandpaper on the back of the scraper to roughen the kick zone.



PRESEASON ONLY

ROTO HANDLE

To use the roto handle and rotobrushes, you need a drill as a source of rotation. This accessory makes brushing quick and efficient. Use a light touch and don't press when you use the rotobrushes, in order to prevent damage to the base of your cross-country skis, Alpine skis or snowboard.



COMBI ROTOBURSH

For those of you who want to try out rotobushing. Used after scraping the base. Start brushing with horsehair, then switch to polishing with nylon.



HORSEHAIR ROTOBURSH

Brushes most of the structure of the base. Brush back and forth. 1000-4000 rpm.



STEEL ROTOBURSH

Used for opening up the fine structure of the ski base. Also used for cleaning the base. 1000-2000 rpm.



NYLON ROTOBURSH

The nylon brush is used for final polish of the ski base. 1000-4000 rpm.



ROTOCORK

Used for warming fluoro-based waxes. The cork roller's friction heat makes the ski base open and absorb the wax. 1000-4000 rpm.



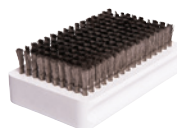
HORSEHAIR BRUSH

The horsehair brush is used after scraping. The horsehair opens up most of the base structure. Brush back and forth.



FINE STEEL BRUSH

Brush 2 to 4 strokes after brushing with a horsehair brush. This opens up the finest structure of the base. Also suitable for cleaning the base. Brush in the ski's running direction.



NYLON BRUSH

Used for polishing the surface after brushing with a fine steel brush. Brush 10 to 20 times to remove loose residue on the base surface. Suitable for stand-alone use after scraping prior to training.



FINE NYLON BRUSH

A brush with very fine bristles used for final polishing aimed at opening the base microstructure.



COMBI BRUSH

Brush made of both brass and nylon. Perfect for beginners to waxing. The brass part is used for cleaning the ski base and the nylon part for removing excess wax after scraping.



FIBERTEX

For cleaning the base without disturbing the structure.



WAX REMOVER 250 ML/1000 ML

Odour-free and environmentally friendly. Available in 250 ml and 1000 ml packages.

**THE ONLY ODOR-FREE,
ENVIRONMENTALLY FRIENDLY WAX
REMOVER ON THE MARKET**







WAXING APRON

A must at the waxing shop. Plenty of storage pockets for wax, waxing tools and smartphones. One size.

FIBERLENE LARGE/SMALL

Lint-free paper used for wiping the ski base without disturbing the base structure. For example, after cleaning the ski's kick zone.



NATURAL CORK LARGE/SMALL

Used for warming fluoro-based waxes in the ski base.



SYNTHETIC CORK

Designed for applying and evening out kick wax.



EASY CUT CAP

The Easy Cut Cap is a smart solution for peeling the metal edge off the wax can. Perfect for using as a lid on your wax cans.



RILLER SET

A complete riller set with handle and three structure rollers for different snow conditions. The riller set is used after glide waxing and after the ski is ready for competition. Use the riller in the ski's running direction. Structure rollers: 1 mm V structure (new snow) +2 to -15 °C, 2 mm straight structure +15 to -6 °C, 0.3 mm straight structure +2 to -20 °C.



WAX STORAGE BOX

New internal compartments with space for all of your wax cans, bottles and tools during competition and training.



PRESEASON ONLY

WAXING TABLE

A WAXING TABLE MUST BE STABLE, ERGONOMIC AND ADJUSTABLE. IT SHOULD ALSO BE EASY TO TAKE WITH YOU ON YOUR TRIP OR COMPETITION, YET SHOULD ALSO WORK AT HOME IN YOUR GARAGE. WE HAVE EVERYTHING FROM OUR TOP MODEL, THE WAXING TABLE, TO THE COMPACT WAXING BENCH WHICH YOU CAN EVEN FASTEN TO AND USE ON YOUR KITCHEN TABLE.

WAXING TABLE

Solid, stable waxing table with a large work space. Room for two skis. Rubberised and detachable profiles for freeing up space. The waxing table is foldable and fitted with a handle on the side that makes it easy to carry. An excellent choice both at the ski competition and in your garage.

ADJUSTABLE rubberised profiles.



PRACTICAL work space.

HANDLE fold it up and take it with you.



DOUBLE WAXING BENCH

Stable waxing bench with room for two skis. Double rubberised profiles with storage space for the most necessary waxes and tools between the profiles. Adjustable profiles. Easily foldable. Rubberized feet.



SINGLE WAXING BENCH

Waxing bench with room for one ski. Adjustable rubberised profiles. Rubberised feet. Foldable.

COMPACT WAXING BENCH

The perfect waxing bench for those in need of good waxing conditions. The bench consists of three parts and comes in a small portable bag, making it very flexible to take on your travels. All you need is a table top or a workbench. Room for one ski at a time.



POLES AND POLE ACCESSORIES

WORLD CUP, LONG-DISTANCE RACE, RECREATIONAL RUN OR TRAINING? IT DOESN'T MATTER, SKIGO HAS SOMETHING SUITABLE FOR EVERYONE! OUR POLES ARE USED BY BOTH BEGINNERS AND THE WORLD ELITE. NEW DESIGN FOR 2013-2014.

SUPER LIGHT BASKET

The Super Light Basket, a basket for competition and general skiing. Thanks to good old fashioned engineering and new ways of combining materials, we have created the by far lightest basket on the market, without sacrificing our high performance requirements!

This basket has been developed to give skiers the best possible advantage in speed. To make sure that the pole is fast and easy to use, it is important to have minimal weight at the tip. The basket should also pack the snow as quick and well as possible at the point of impact to minimise the energy loss. To ensure to keep as much energy in the pole as possible we have used the 'peltor turbines' principle with all its advantages. This means that we have been able to reduce the compression area as well as keeping a very high snow compression capability under the basket.

The grip is also very important. We have chosen to use a cylindrical tip to increase the grip and reduce the friction when the pole is pushed forward. Thanks to the cylindrical tip we save a lot of material around the tip.

Try it yourself, you will feel the difference!





RACE SPRINT 2,0

We are aware that Unique and Extreme are two strong superlatives, yet there are no words that better describe this pole! Race Sprint 2,0 is specially developed for sprint skiing. The pole represents an advanced development of the successful Race 2.0 pole that we launched onto the market last year. The development of ski sport in recent years has given sprint races a significant role in the context of international competition, both in and outside the World Cup. This has meant increased requirements on equipment to ensure that athletes can keep up with the short and very intense heats.

It is extremely important that poles withstand at all times the forces and impacts they are exposed to. This is why we think that in order to be the market leader, we must tailor the pole's most important properties so that they meet the highest requirements at each and every moment of the competition.

Something we feel we have now succeeded in doing!

RACE HANDLE To ensure that the pole is light and has optimal swing weight, we have fitted it with our race handle in natural cork, Power Strap 1.0 and 8 mm SuperLight basket. Used, for example, by Teodor Peterson, Calle Halfvarsson and Lars Nelson in the Swedish ski team

NEW!

UHM CARBON The pole is manufactured in 100% Carbon and is reinforced so that you get as much as possible out of the effort you put into every stroke.

RACE SPRINT Available in lengths from 130 to 170 cm at 2.5 cm intervals

WORLD NEW'S POWER STRAP 1.0



PULL the strap to tighten
check for the lights.



PULL the strap to store energy
and tension the face.



Boa Closure System
www.boa.com



Power Strap 1.0 is a completely new innovation on the market for cross-country skiing. Teodor Peterson has used Power Strap 1.0 during the season 2013/14 and the control strap proved to be a great success. The difference between Power Strap 1.0 and other control straps on the market is that the Power Strap has a locking device from Boa Technology. This feature makes it super easy for you to adjust the strap elasticity how you want it on your hand.

Below follows some of the benefits Power strap 1.0 gives you:

- Better customized fit for different hands and gloves. It will become easier to adjust how tight you want the control strap on your hand.
- The Power Strap 1.0 doesn't mess up your clothes like other control straps with velcro do.
- The BOA locking system has an improved durability and lasts much longer than control straps with velcro.

Power Strap 1.0 comes in **ONE SIZE** while normal control straps have 3 sizes. You can easily customize the size, just using a scissor. The optimized fit make Power Strap 1.0 become one with the your hand and you get a better control of your poles. The materials of the Power Strap 1.0 are carefully chosen to give as little power loss as possible between the strap and the pole. Small changes make a big difference in the long run!

Good luck with your new Power Strap 1.0
SKIGO TEAM

RACE 2.0

Last year's success, which we have now developed even further! Very light and stiff pole with carefully balanced tubing to ensure best feel and swing weight. The race pole has improved stiffness and significantly higher breaking strength than last year's model. The pole is fitted with our race handle in natural cork, the innovation Power Strap 1.0 and a 8 mm Super Light basket . All of this contributes to ensuring that the pole has a very natural feel and extremely low swing weight. Used by competitive skiers all over the world. Available in lengths from 130 to 170 cm at 2.5 cm intervals.



NEW!

ELITE

The Elite pole is the inexpensive model in our family of poles in 100% carbon. Perfect for those of you who train a lot, have just embarked on a professional career or simply feel that are a little too strong and need to switch over to a stiffer pole. More sensitive swing weight, lower overall weight, cork handle, racing strap and 8 mm basket. Lengths from 130 to 170 cm.



NEW!

VASA

The pole we recommend for those are about to compete in the Vasaloppet Race for the first time. Vasa is made in 50% fibreglass and 50% carbon. Naturally, it is fitted with a cork handle and a comfortable adjustable racing strap. 10 mm pole basket. Lengths from 130 to 170 cm.



XC

Beginner's pole with racing strap, cork handle and 10 mm basket. Good pole for ski beginners. Made in 90% fibreglass and 10% carbon. Lengths from 130 to 160 cm.



TOURING

Pole in 100% fibreglass. Comes with a plastic handle and a loop strap that is easy to put on and take off. Large 10 mm pole basket. An excellent pole for ski touring. Lengths from 80 to 155 cm.



TIP: Always store your poles in a pole case (see page 33).

ROLLER 100

Roller ski pole light colours to ensure better visibility when you're training on the trafficed roads. Tubing in 100% carbon. Racing strap and handle in natural cork. Superior swing weight feel with a PRO carbon ferrule. Lengths from 130 to 170 cm.



ROLLER 50

A strong and sturdy roller ski pole in 50% carbon. The pole is equipped with a racing strap, handle in natural cork and a hard metal tip. Lengths from 130 to 170 cm.



RACING HANDLE

Very lightweight pole handle in natural cork.



POWER STRAP 1.0

Power Strap 1.0 is our groundbreaking strap with a lock system from Boa Technology. This allows you to get the perfect fit and control on your poles. We have already had great success with Power Strap 1.0 season 2013/14 with Teodor Peterson. Take the leap to the next level with Power Strap 1.0 you too!

Size: ONE SIZE



PRO RACING STRAP, SIZES S/M/L

Durable, comfortable and adjustable racing strap with strong Velcro that can easily handle stress during competition. The standard strap fitted to our racing poles. Available in sizes S, M and L.

RACING STRAP, SIZES S/M/L

Comfortable, adjustable racing strap with Velcro. Available in sizes S, M and L.



RACE BASKET LIGHT 8MM

Marknadens lättaste truga för tävling/träning. Passar mella till hårt underlag. Du kommer känna skillnad. Sitter på Race 2.0 samt sprint

RACE BASKET 8 MM

A small and light racing basket for competitions and hard-packed trails designed to improve the pole's swing weight. The standard basket fitted to our racing poles.

SNOW BASKET 8 MM

Basket with wider wings for those of you who want a pole with a 8 mm end and good pole grip for competitions and training in new snow or loosely packed snow.

POLE BASKET 10 MM

Good basket for 10mm pole shafts with large wings for all types of ski trails.



PRO ROLLERSKI FERRULE

Carbon ferrule with a thick hard metal tip. The carbon in the pole tip guarantees extra long service life. The optimum choice for abrasive surfaces such as gravel roads.

Available in sizes 7, 8, 9 and 10 mm.



POLE CASE

Hard pole case with room for 3 to 4 pairs of ski poles. Adjustable shoulder strap. It's important to take care of your poles. A pole tube protects against transport damage. Perfect for travelling by car, train or plane.

SKI BAG

Durable ski bag with room for 2 to 3 pairs of skis. Makes it easy to take several pairs of ski to competitions, training sessions and on trips.



SKI STRAPS

Ski holders for transporting your skis. One pair.

SKI & POLE HOLDER

An accessory that makes carrying your poles and skis easier.



NEW!

ROLLER SKIS

ROLLER SKIS ARE THE OPTIMUM FORM OF TRAINING DURING THE SNOW-FREE PERIOD OF THE YEAR. WE HAVE FOCUSED ON DEVELOPING ROLLER SKIS WHICH GIVE THE RIGHT SKI FEELING. IT MUST SIMPLY FEEL LIKE "SNOW". WE HAVE BEEN REALLY SUCCESSFUL WITH OUR NEW CLASSIC CARBON. YOU WON'T COME CLOSER TO SKIING THAN THIS.

SKIGO – FIRST TO USE AN NIS PLATE IN ROLLER SKIS.

The first roller ski in the world with a pre-mounted NIS plate. The use of an NIS plate means you avoid drilling the skis and allows quick and easy installation of a binding on the plate. The binding can then be adjusted on the plate if the skis are to be used by people with different shoe sizes. And of course you can also move the binding from the roller skis to your skating or classic skis during the winter.

For bindings which are not tailored to the NIS plate, it is naturally possible to install them in the traditional manner. Bindings tailored to NIS belong to the NNN family.



BODY in carbon for a winter-like ski feeling.

SCHAEFFLER

LUK

ISA

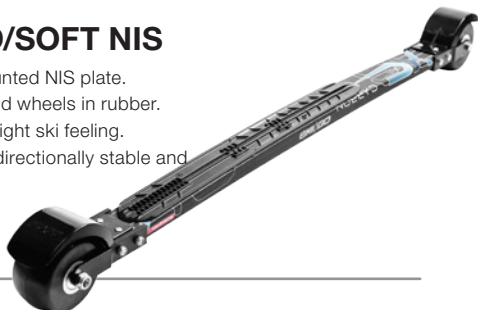
FAG

INA roller clutches

RUBBER WHEELS providing shock absorption on poor surfaces, No 2 speed. .

XC CLASSIC CARBON HARD/SOFT NIS

The first classic roller ski in the world with a pre-mounted NIS plate.
Very lightweight roller ski with 100% carbon body and wheels in rubber.
The carbon body minimises vibration and gives the right ski feeling.
An extra long wheel base of 780 mm makes the ski directionally stable and perfect for diagonal stride skiing and double poling.
Available in two in two stiffnesses: Soft (up to 75 kg) and Hard (above 75 kg).



XC CLASSIC CARBON HARD/SOFT

Very lightweight roller ski with 100% carbon body and wheels in rubber.
The carbon body minimises vibrations and gives the right ski feeling. An extra long wheel base of 780 mm makes the ski directionally stable and perfect for diagonal stride skiing and double poling.
Available in two stiffnesses: Soft (up to 75kg) and Hard (above 75kg). The skis are delivered with solid rubber wheels.



NS SKATE CARBON NIS

The first skate roller ski in the world with a pre-mounted NIS plate.
Directionally stable skate roller ski with body in 100% carbon. The carbon in the body provides a winter-like ski feeling and the body reduces shocks from uneven surfaces. An excellent choice for both competition and training.
Solid rubber wheels.



NS SKATE CARBON

Directionally stable skate roller ski with body in 100% carbon. The carbon in the body provides a winter-like ski feeling and the body reduces shocks from uneven surfaces. Excellent choice for both competition and training.
Solid rubber wheels.



XC CLASSIC FIBERGLAS

Brand new roller skis in laminated wood and fiberglass. Cap construction, similar to common Snow-skis. One piece forks for directional stability and high durability. CC dimensions 750mm, comes with standard No2 wheels.

NEW!



CALLE HALFVARSSON, SWE

XC CLASSIC ALUMINIUM

Roller ski in strong and light 7005 aluminium. This classic roller ski is equipped with a long wheel base of 780 mm that makes the ski directionally stable and perfect for diagonal stride skiing and double poling. Pre-drilled holes in the body make it easy to install a binding. Rubber wheels.



PRE-DRILLED HOLES

NS SKATE ALUMINIUM

Completely new skate roller ski in strong 7005 aluminium. The ski is light, directionally stable and an excellent choice for those who want to practice skating even in the summer. The ideal model if you have not had skate roller skis before. The body has pre-drilled binding holes for easy installation of bindings. The skis have rubber wheels.



PRE-DRILLED HOLES

NEW!

JR ONE-PIECE ALUMINIUM

Short and light ski with rubber wheels and body in aluminium. Pre-drilled binding holes. Perfect for children and adolescents. Up to 65 kg.



PRE-DRILLED HOLES

ROLLER SKI BAG

Roller ski case in durable nylon. Makes it easy to take two pairs of roller skis wherever you go.



CLASSIC FRONT WHEELS NO. 3

Pair for classic roller skis with two complete slow front wheels in rubber. Easy to install. Standard (No. 2) and Slow (No. 3).

CLASSIC REAR WHEELS NO. 3

Pair for classic roller skis with two complete slow rear wheels in rubber. Easy to install. Standard (No. 2) and Slow (No. 3).



CLASSIC FRONT WHEELS NO. 2

Pair for classic roller skis with two complete front wheels, in rubber as standard. Easy to install. Standard (No. 2) and Slow (No. 3).

CLASSIC REAR WHEELS NO. 2

Pair for classic roller skis with two complete front wheels, in rubber as standard. Easy to install. Standard (No. 2) and Slow (No. 3).



SKATE WHEELS NO. 3

Pair for skate roller skis with two complete slow wheels in solid rubber. Easy to install. Standard (No. 2) and Slow (No. 3).



SKATE WHEELS NO. 2

Pair for skate roller skis with two complete standard wheels in solid rubber. Easy to install. Standard (No. 2) and Slow (No. 3).



CLASSIC MUDGUARDS

Black classic mudguards. Four per pack.



SKATE MUDGUARDS

Black mudguards for skate roller skis. Four per pack.



GLOVES

YOUR GLOVES MUST HAVE A PERFECT FIT TO PROVIDE THE BEST CONTACT WITH THE POLE. THEY MUST ALSO BE SUITED TO THE TEMPERATURE. OUR GLOVES HAVE BEEN DEVELOPED TOGETHER WITH WORLD CLASS SKIERS LIKE DANIEL RICHARDSSON, ALEXEY POLTORANIN AND FINN HÅGEN KROGH. YOU SHOULD HAVE AT LEAST TWO PAIRS AND ALTERNATE BETWEEN THEM.

NOW WE UPDATE OUR GLOVE SERIES TO MAKE IT EASIER FOR YOU TO CHOOSE THE RIGHT GLOVE.

NYHET!

We have divided the gloves in two series: SPORT MODE and STAY WARM.

SPORT MODE

A series for those who want the perfect feeling and the ultimate contact with the pole handle. In SPORT MODE series we use thinner and more hi-tech materials to get the perfect fit.

STAY WARM

A series for those who want to keep the feeling in the gloves, but still prioritize warmth. In STAY WARM series, you get a warmer glove that will won't let you down when the cold gets tough.

SPORT MODE



STAY WARM



X-SKIN

Our popular race glove from the world cup have a new fitting and new design for both men and lady. Very thin form-fitting. Clarino palm to ensure best contact with the pole. Windproof back in Lycra, pre-bent fingers and neoprene cuff. A top glove with excellent breathability.



TRAINER

A warm glove with a windproof Lycra top. Pre-bent fingers. Synthetic leather palm and neoprene cuff. Slightly more lining than in SKIGO's racing gloves. Ideal for training.



X-SKIN THERMO

Thinsulate lined racing glove made of Lycra for a little colder conditions. Very smart solution with fleece reinforced fingertips, neoprene cuff and grip area in Clarino.



TRAINER THERMO

A very warm glove with a windproof top. Pre-bent fingers. Synthetic leather palm and neoprene cuff. Slightly more lining than in SKIGO's racing gloves. Ideal for training.



TOURING

An affordable glove with four-way stretch top. Synthetic leather palm and neoprene cuff.



JUNIOR

A Thinsulate-lined children's and junior's glove. Well-sewn with a synthetic leather palm and neoprene cuff.



HUMMER PRO

Very warm Thinsulate-lined and windproof three-finger glove with Clarino palm and neoprene cuff with Velcro fastening. A glove designed for days when it's really cold. An excellent choice for spectators along the ski trail.



FLEXIBLE – 2 IN 1

A model based on the X-Skin which also features a super thin finger cover that provides incredible protection against the elements. The glove is thin and supple and suitable for both competitions and training sessions. Windproof back in Lycra. Pre-bent fingers. Neoprene cuff and a very thin Clarino palm to ensure the best contact with the



ROLLER

Thin summer glove with durable nylon mesh back. Form-fitting with a padded Clarino palm for an extra good ski feel. Excellent breathability.





SAMRUK
ZYNA

SPORT

SKYGO

sportful

2008
SAMRUK
ZYNA

AZIAVTO



A Polzarnina

WORLD CUP HAT

Warm hat with an inside in brushed fleece. An excellent choice for a cold day on the trail.



RACING HAT

Thin, form-fitting racing hat.
Good breathability. Colours: white or black.



RACING HEADBAND

Thin form-fitting racing headband.
Good breathability. Colours: white or black.



EXTRAS

WAIST BAG

Waist Bag with room for waxes and tools. Perfect to use for training or long-distance competitions when you need to take along a little extra energy.



THERMO QC DRINK BELT

Drink belt with "Quick Cap" on the lid. The belt has a heat-insulating drink container with a volume of 1.1 litres. Practical pocket for keys and energy food.



THERMO DRINK BELT

Drink belt with heat-insulating drink container. Volume of 1.1 litres. Practical pocket for keys and energy food.



Photo: Mattias Helgesson

TIP: Keep your drink warm during your training session!

CLASSIC SKIS

1. To ensure the best glide and grip possible when you pick classic skis, it is important to be meticulous in choosing skis and in measuring camber. Always consult a sports shop. Well-stocked sports shops nowadays have very good tools for measuring which ski is exactly right for you.
2. The ski's camber affects the kick zone, where the grip is located regardless of kick or klistert waxing. To get a great ski feel, it is therefore important to get a camber that is suitable just for you. Camber is based on your weight and your previous experience in classic long-distance skiing. If the camber is too stiff, the kick zone will not press into the snow when you are skiing. This will make the skis slip backwards.
Nor is it good to have a camber that is too soft. In this case, the kick zone will be too close to the snow and may lead to poor glide.

SKATING SKIS

1. Always choose skis that match your height and body weight. Always consult a sports shop.
2. Measure the ski camber to make sure you don't choose a pair that are too soft for your weight.

TIPS AND ADVICE BEFORE WAXING

1. You should ideally use a waxing iron. Clothes irons have uneven thermostats and can damage skis.
2. Remember to keep the wax iron in motion from tip to tail.
3. Expose the base structure before glide waxing by brushing lightly in the running direction using a fine steel or brass brush. Use a light touch when using a fine steel brush.
4. In most cases, the brushing done after scraping is insufficient. Brush a little more even if you are satisfied.
5. Use Wax Remover only to clean the ski's kick zone and top side. Never use Wax Remover on the ski's glide zone.
6. It is a good idea to occasionally clean the ski's glide zone. Use a soft wax like SKIGO Soft and warm it in with the waxing iron. Scrape while the glide wax is still warm and molten. Let the glide surfaces cool down and then brush as though after an ordinary glide wax.
7. We recommend a fine structure for the base in cold conditions and a coarser structure in warm conditions.

8. Try to shorten the kick zone by 3 to 4 cm when applying klistler.
9. Remember: PRACTICE MAKES PERFECT! Try out different waxing options during training so that you know how they work when you're competing.
10. When you stow away the skis for storage at the end of the season or during longer breaks, we ALWAYS recommend that you put a layer of glide wax on the ski's glide zone, without scraping off. This keeps the base clean and fresh until next time.
11. Take care of your skis to get the most out of them at all times.

BASE PREPARATION

When you buy a new pair of skis or after stone grinding, you need to saturate the base (base preparation).

1. Brush the base a couple of times with a brass brush, a very fine steel brush or fibertex to remove micro hairs and help open it up. Work tip to tail.
2. Warm in one layer of SKIGO Soft with a waxing iron at low temperature and scrape using a plastic scraper while the wax is still warm. This will clean the base. NOTE: This operation can be repeated at regular intervals during the winter in order to clean the base.
3. To saturate the base with wax, warm in 1-2 layers of SKIGO Soft, allow to cool, then scrape and brush with a nylon brush between ironings.
4. Now switch over to SKIGO Red Glide Wax. For racing, use HF Red or LF. Warm in 3-5 layers of the red glide wax. Scrape and brush using a nylon brush between wax applications. Let the wax cool between ironings for 15 to 20 mins.
5. If you aren't going out on the trail straight after waxing, leave the last layer unscraped until it's closer to skiing time.
6. Scrape and brush the wax from the ski base when it's time to go out. Brush gently afterwards using a brass brush to open the structure. Then apply the wax of the day. Scrape and brush with a nylon brush.
7. When it comes to base waxing a pair of classic skis, there is no need to prepare the ski's kick zone.
8. Your skis are now ready to go. Good luck!

BASE BRUSHING INSTRUCTIONS

1. First use a horsehair brush to brush the base back and forth until nothing is coming out of it.
2. Make two or three loose strokes in the running direction with a fine steel brush in order to open the base structure.
3. Finish by polishing the base with the nylon brush. Fluid is hard, so we recommend that you brush a lot. This keeps the base clean and fresh till next time.

WAXING WITH FLUORO PRODUCTS

FLUORO BLOCK WAXING SKIGO C22, C44/7, C105, C110

1. Apply the wax appropriate for the day's surface conditions. We recommend HF for the best results.
2. Apply fluoro block by rubbing on the base.
3. Cork in with a natural cork, manually or using a rotocork until the base is lukewarm.
4. Now let the skis rest for about 20 minutes.
5. Brush the ski. Recommended brushes include the Horsehair Brush, the Fine Steel Brush (lightly) and the Nylon Brush.
6. For better durability, repeat points 2 to 5 again.

FLUORO POWDER WAXING SKIGO C22, C44/7, C105, C 110

1. Apply SKIGO LF Graphite, then scrape and brush.
2. Apply the HF wax appropriate for the day's snow conditions. Scrape and brush.
3. Sprinkle the day's fluoro powder evenly over the glide zone.
4. Tack down the powder with the waxing iron and then evenly and quickly iron the glide zone moving tip to tail. Use a high temperature so that you don't have to iron back and forth. Moving the iron slowly or back and forth may damage the base.
5. Let the skis rest for about 20 minutes; if possible, longer.
6. Brush immediately before you go out on the trail if possible. Recommended brushes include the Horsehair Brush, the Fine Steel Brush and the Nylon Brush.

FLUID WAXING SKIGO Fluid C22, C44/7, C55/99, C105, C110, CM10

1. Apply a layer of SKIGO LF Graphite. Scrape and brush.
 2. Apply the HF wax appropriate for the day's surface conditions. Scrape and brush.
 3. Spread fluid over the glide zone. Let it dry for 10 mins.
 4. Cork in the fluid by hand with a natural cork or using a rotocork until the base is lukewarm.
 5. Let the skis rest for about 20 minutes.
 6. You can now brush the base. Recommended brushes include the Horsehair Brush, the Fine Steel Brush and the Nylon Brush. Fluid is hard, so we recommend that you brush a lot.
- CM10 Fluid** – For regular races: apply, allow to dry, cork and brush. For sprint races: apply, allow to dry and go.

TIP: Always apply SKIGO Graphite as a base before glide waxing for racing and competitions. LF Graphite is a universal base for HF waxing.

WAXING

KICK WAX APPLICATION

1. Roughen the ski's kick zone with sandpaper (P100). This helps the wax adhere better to the base.
 2. Use SKIGO Base or SKIGO Blue as the initial layer. One layer depending on snow type.
 3. Warm in with a well-cleaned waxing iron.
 4. Apply the kick wax suitable for the day's surface conditions based on temperature and snow type.
 5. Apply 4 to 6 thin and even layers on the ski's kick zone. Cork between layers.
-

KLISTER APPLICATION

1. We recommend applying klister indoors where it is warm.
 2. Roughen the kick zone in the same way as with regular kick wax.
 3. Apply a thin layer of hard klister as the initial layer; for example, Blue or Violet Klister.
 4. Apply the klister of the day, ideally using a heat gun or similar to warm the klister in. Avoid open flame near the skis as much as possible.
 5. Do not be afraid to apply klister. Many people apply it too thinly.
 6. Let the skis cool off outdoors before you go out on the trail. It should be hard before skiing.
-

CLEANING





1. Scrape off the kick wax or klister using the SKIGO kick wax scraper. Apply SKIGO Wax Remover. Wait 20 to 30 seconds while the Wax Remover is dissolving the remaining wax. You can now wipe off the kick zone with Fiberlene.
2. Glide zones may need cleaning several times every winter. Drip and iron SKIGO Soft Wax on the skis and then scrape off while still warm and molten. Dirt floats up to the surface and is scraped away. You can now apply a new layer of wax. Avoid using Wax Remover on glide zones. Wax Remover will remove all wax and then you will have to start over with base preparation.

GLIDE WAX TABLE

Snow type	Coarse snow artificial snow		Old snow		New snow	
	<60%	>60%	<60%	>60%	<60%	>60%
+15 °C to +5 °C	HF Yellow + CM10	HF Yellow + CM10	HF Yellow + C22 powder or CM10	HF Yellow + C22 powder or CM10	HF Yellow + C22 powder	HF Yellow + C22 powder
+5 °C to 0 °C	HF Yellow + CM10	HF Yellow + CM10	HF Yellow + C22 fluid or CM10	HF Yellow + C22 fluid or CM10	HF Yellow + C22 powder or fluid	HF Yellow + C22 powder or fluid
0 °C to -4 °C	LF Violet+ C44/7 powder or fluid	LF Violet+ C44/7 powder or fluid	HF Red + C44/7 powder	HF Red + C44/7 powder or C105 powder	HF Orange + C105 powder	HF Orange + C105 powder
-4 °C to -8 °C	HF Violet mixed with HF Yellow + C44/7 fluid	HF Violet mixed with HF Yellow + C44/7 fluid	LF Green + LF Orange + C44/7 powder or C105 fluid	HF Green mixed with HF Orange + C44/7 powder or fluid or C105 powder	LF Blue + C55/99 fluid	HF Blue + C105 powder
-8 °C to -12 °C	LF Violet + P16 powder	LF Violet + P16 fluid	HF Green + C380 powder	HF Green + C105 fluid	LF Blue + C55/99 fluid	HF Blue + C105 powder
-12 °C to -15 °C	HF Green + P16 powder	LF Green + P15 or C110 powder	LF Green + C380 powder	HF Green + C110 powder	LF Green + C380 powder	HF Green + C110 powder

Always apply graphite as the initial layer for extra durability. Not necessary for races shorter than 2.5 km. Graphite as an initial layer is used for "blocking" old wax in the base from coming up.

Fluids produce a harder surface than powder waxes. Fluids are used in aggressive snow and powder in newer and finer snow.

-  Top with C22 Solid fluoro block
-  Top with C44 Solid fluoro block
-  Top with C105 Solid fluoro block
-  Top with C110 Solid fluoro block

KICK WAX TABLE

Temperature	New snow	Coarse snow/Snow crust
+ 10°C	XC Violet Klister as a base + XC Orange Klister or, alternatively, HF Yellow Klister	XC Violet Klister as a base + XC Orange Klister mixed with XC Silver Klister or, alternatively, HF Yellow Klister
+ 5°C	XC Violet Klister as a base + XC Orange Klister or, alternatively, HF Yellow Klister	XC Violet Klister as a base + HF Universal klister or HF yellow klister
+ 2°C	XC Violet Klister as a base (thin) + XC Universal Klister or, alternatively, XC Orange	XC Violet Klister as a base + XC Red Klister or, alternatively, HF Yellow Klister
0°C	XC Blue ironed in as a base + LF Orange	XC Violet Klister as a base + HF Red or, alternatively, HF Violet Klister
- 1°C	XC Blue ironed in as a base + LF Violet or XC Red	XC Blue Klister as a base (thin) + HF Blue or, alternatively, HF Violet Klister
- 2°C	XC Blue ironed in as a base + LF Violet or XC Red	XC Blue Klister as a base (thin) + HF Blue or, alternatively, HF Violet Klister
- 3°C	XC Blue ironed in as a base + HF Violet or XC Red mixed with XC Blue	Base wax ironed in as a base + HF Blue
- 5°C	XC Blue ironed in as a base + HF Violet or, alternatively, XC Violet	Base wax ironed in as a base + HF Blue or, alternatively, XC Blue
- 8°C	XC Blue ironed in as a base + LF Violet	BASE ironed in as a base + HF Blue or XC Blue
- 12°C	XC Blue ironed in as a base + LF Violet or, alternatively, XC Green	Base wax ironed in as a base + HF Blue
- 15°C	XC Green	Base wax ironed in as a base + HF Green or, alternatively, HF Blue

When you are using kick wax from a can, you should always apply 4 to 6 thin layers. It is better to apply several thin layers than one thick layer. The base wax is warmed into a roughened kick zone. When the snow is dirty, you should use fluoro products to repel dirt and maintain good glide.

BNS Midwest

8929 Penn Ave S

Bloomington MN 55431

952-303-5683

midwest@bouldernordic.com

BNS East

200 Anderson St, Suite 5

Portland, ME 04101

207-541-7438

bnseast@bouldernordic.com

BNS Boulder

3600 Arapahoe Ave

Boulder CO 80303

720-227-9400

sales@bouldernordic.com



WWW.SKIGO.SE