

TRUNDLES

NOTE: IF YOU ARE UNSURE ABOUT GENERAL FITMENT PLEASE CONTACT US BEFORE YOU START FITTING THIS COMPONENT TO YOUR VEHICLE.

TRUNDLES CANNOT BE HELD RESPONSIBLE FOR ANY FURTHER MODIFICATIONS OR DEVIATIONS FROM THE GIVEN INSTRUCTIONS LAID OUT IN THIS FITTING GUIDE.

RECOVERY POINT (RPPRA150) FITTING GUIDE

TOYOTA PRADO 150 SERIES FJ SERIES LANDCRUISER

FITTED TO 150 SERIES PRADO - NO BULL BAR

1. Each side uses 3 x M12x1.75mm (inserted from the outside of the chassis rail - if the bolt holes to the chassis or bull bar are available). High-tensile bolts supplied, with relevant flat & split washer. **At minimum, this tow point requires two bolts on each side.**

2. Installation requires three nuts on wires (supplied) to be installed into the chassis rail for each tow point. This will require the bumper/bull bar to be removed on some models, Check your chassis before fitment.

3. The supply of a third bolt for each side is currently in transition—if your kit has only been supplied with a total of four bolts, it is recommended that a third bolt be fitted to each tow point if the bolt hole to the chassis or bull bar is available. You will need to purchase this bolt/nut set yourself, as it is not supplied in the kit during this transition period.

4. Ensure two bolts per tow point are fitted and torqued to recommended settings to ensure tow points meet tested standards.

FITTED TO 150 SERIES PRADO - TJM STEEL BAR

Please consult image 1 to determine bolt fitment locations.

At minimum, this tow point requires two bolts on each side.

FITTED TO 150 SERIES PRADO - TJM T13 OUTBACK BAR

Please consult image 1 to determine bolt fitment locations (as per TJM Steel Bar).

At minimum, this tow point requires two bolts on each side.

FITTED TO FJ SERIES LANDCRUISER

Please consult image 1 to determine bolt fitment locations.

At minimum, this tow point requires two bolts on each side.

NOTE: Always use tow points as a matched pair teamed with an equalising bridle during any recovery situation.



Ensure all supplied and specified components are used during the installation of tow points. Failure to do so will significantly reduce the Working Load Limit (WLL) specified for each individual point (5000kgs), which can result in serious injury or death.



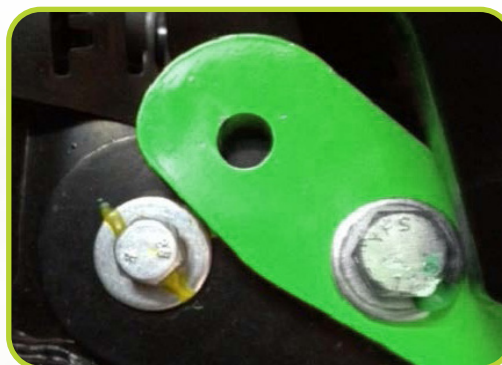
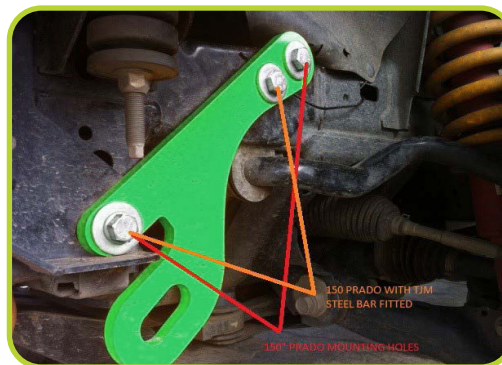
TESTED TO 3250KGS
PER TOW POINT

HARDWARE SUPPLIED WITH RPPRA150

1x RPPRA150L Tow Point
1x RPPRA150R Tow Point
6x M12 x 1.75 Bolts
6x M12 x 1.75 Nuts on Wires
6x Flat Washers
6x Split Washers

All bolts to be tightened to the appropriate torque value based on nominal size, pitch and grade, or OE manufacturer's specs.

	8.8	10.9	12.9
M10	41-60 Nm	59-85 Nm	65-94 Nm
M12	71-105 Nm	102-150 Nm	114-164 Nm
M14	112-168 Nm	161-240 Nm	182-265 Nm
M16	175-260 Nm	250-371 Nm	282-406 Nm



TRUNDLES

TRUNDLES AUTOMOTIVE LTD - 4X4 Specialist
10-12 Cory John Place, Bell Block, New Plymouth
sales@trundlesautomotive.com
www.trundlesautomotive.co.nz