

TRUNDLES

NOTE: IF YOU ARE UNSURE ABOUT GENERAL FITMENT PLEASE CONTACT US BEFORE YOU START FITTING THIS COMPONENT TO YOUR VEHICLE.

TRUNDLES CANNOT BE HELD RESPONSIBLE FOR ANY FURTHER MODIFICATIONS OR DEVIATIONS FROM THE GIVEN INSTRUCTIONS LAID OUT IN THIS FITTING GUIDE.

RECOVERY POINT (RPNAV22) FITTING GUIDE

NISSAN NAVARA D22 TOYOTA LANDCRUISER 200 SERIES

FITTED TO D22 NAVARA

1. Fitted to factory retained nuts on both L/H & R/H sides.
2. Install 12mm Spacer Plates (one per point) to provide clearance on angled chassis gusset.
3. The tow point mounting holes are slightly elongated to allow tolerance for different country of origin re. chassis/vehicle manufacture.
4. Ensure two bolts per tow point are fitted and torqued to recommended settings to ensure tow points meet tested standards.

FITTED TO 200 SERIES

1. The RPNAV22 has an additional mount hole to make this item suitable for fitment to the 200 Series Landcruiser. The 12mm Spacer Plates should not be required for the fitment of these tow points to the 200 Series.
2. The kits do NOT include the nuts required to secure the M12x1.25 bolts. You will have to provide these yourself if fitting to a 200 Series Landcruiser.

NOTE: Always use tow points as a matched pair teamed with an equalising bridle during any recovery situation.



TESTED TO 5000KGS
PER TOW POINT

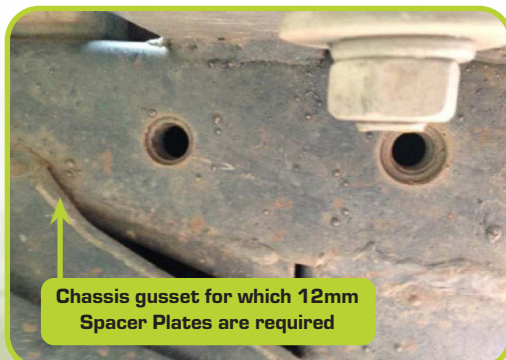
HARDWARE SUPPLIED WITH RPNAV22

- 1x RPNAV22L Tow Point
- 1x RPNAV22R Tow Point
- 4x M12 x 1.25 Bolts
- 4x M12 Flat Washers
- 4x M12 Spring Washers
- 2x 12mm Spacer Plates

All bolts to be tightened to the appropriate torque value based on nominal size, pitch and grade, or OE manufacturer's specs.

	8.8	10.9	12.9
M10	41-60 Nm	59-85 Nm	65-94 Nm
M12	71-105 Nm	102-150 Nm	114-164 Nm
M14	112-168 Nm	161-240 Nm	182-265 Nm
M16	175-260 Nm	250-371 Nm	282-406 Nm

Ensure all supplied and specified components are used during the installation of tow points. Failure to do so will significantly reduce the Working Load Limit (WLL) specified for each individual point (5000kgs), which can result in serious injury or death.



Chassis gusset for which 12mm
Spacer Plates are required



12mm Spacer

TRUNDLES

TRUNDLES AUTOMOTIVE LTD - 4X4 Specialist
10-12 Cory John Place, Bell Block, New Plymouth
sales@trundlesautomotive.com
www.trundlesautomotive.co.nz