



# FILTERS



Oosafe® Filters are manufactured in an EN ISO 13486:2016 certified facility



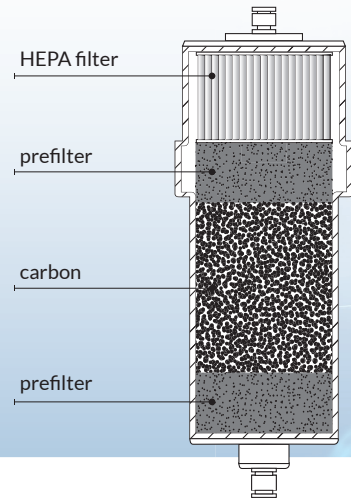
Oosafe® Filter 4 and Oosafe® Filter 6 are inline filters used in between CO<sub>2</sub> incubators and a gas source to purify incoming CO<sub>2</sub>, N<sub>2</sub> and premixed gas against volatile organic compounds (VOCs), chemically active compounds (CACs), microorganisms, dust and other harmful compounds and particles.

- **Better Embryo Development:** Purified CO<sub>2</sub>, N<sub>2</sub> and premixed gas results in better embryo development.
- **Removal of VOCs, microorganisms and particles:** The combination of activated carbon granules, HEPA filter and pre-filters ensures high VOC removal capacity and traps microorganisms and particles (H14 efficiency ≥ 99.995%).
- **Strict Quality Control:** Each filter is produced in a cleanroom in fully controlled environment and pressure tested to ensure product safety.
- **Replacement:** Replacement is recommended every 4 months for Oosafe® Filter 4 and every 6 months for Oosafe® Filter 6.
- **Approved by Scientists:** Oosafe® Filters have been used for many years in well-known IVF clinics all over the world as the main gas purification tool.
- **Traceability:** Each filter's manufacturing history can be traced easily based on the lot number written on the label.
- **High Product Quality:** Manufactured in an EN ISO 13485:2016 certified facility.
- **Packaging:** Each filter is individually packed and sealed. Product is sold in a cardboard box as four pieces set, including certificate of conformity and installation instruction.



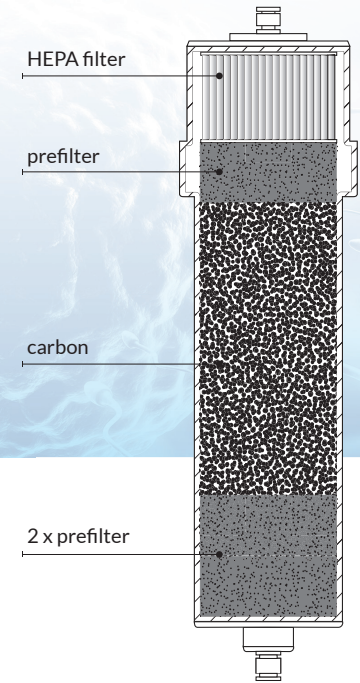
Oosafe® FILTER 4  
(Replace every 4 months)

Product code:  
**OOIF-SM04**



Oosafe® FILTER 6  
(Replace every 6 months)

Product code:  
**OOIF-ST06**



## OOSAFE® FILTER CONNECTION SET FOR BENCHTOP INCUBATORS

Leak-free connection set for installation of Oosafe® Filter 4 and Oosafe® Filter 6 to the benchtop incubators using metal gas pipes, i.e. Cook Minc/Origio Planer benchtop Incubators.

- **Easy to Install:** Replace our connection set with metal gas pipe.
- **Ready to Use:** Comes with all necessary connectors and tubing.
- **Original Connectors:** Using original connectors from metal gas pipe manufacturer ensures no gas leak and no connection problems.
- **Connection Set includes:** 2 x Polyethylene 6 mm hard tubing (50 cm long each), 2 x 6 mm connectors, 2 x Swagelok metal connectors (same as metal pipe manufacturer).



OOSAFE® FILTER CONNECTION SET  
FOR BENCHTOP INCUBATORS

Product code: **OOFC5-MC**



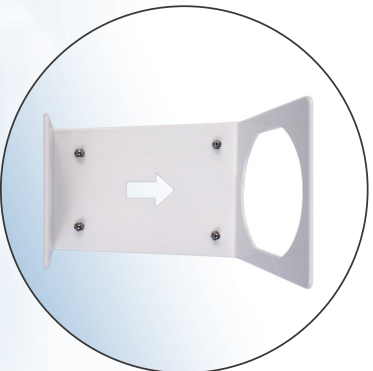
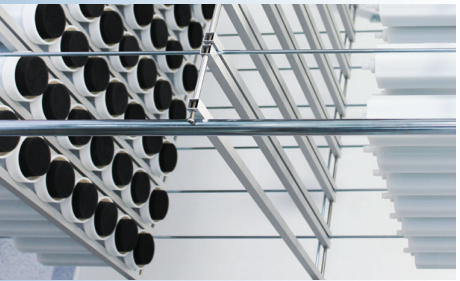
Each filter  
is pressure tested.



## PRODUCTS TO BE USED WITH OOSAFE® FILTERS

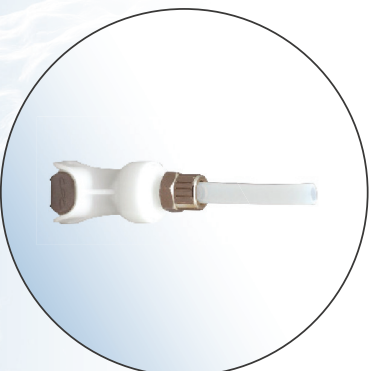
For the best performance, use only original products!

- Magnet Holder for Oosafe® Filters is designed to prevent undesired gas flow blockage. The holder is magnetic and can be placed on the side of the incubator or any metallic surface.
- Connectors for Oosafe® Filters are designed with shut/off valve that filters can be easily changed even with the gas flow on.
- Connectors are available in two sizes: 6 mm hard tubing and 8 mm soft tubing.



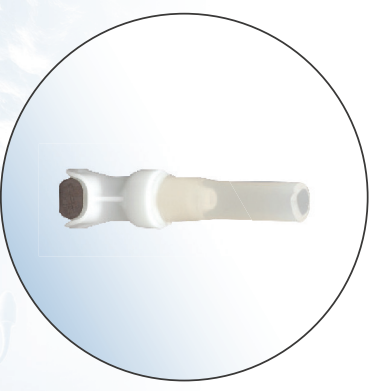
MAGNET HOLDER  
for Oosafe® Filters

Product code: **OOHLD-01**



CONNECTOR  
for Oosafe® Filters  
6 mm diameter hard tubing

Product code: **AS-852086**



CONNECTOR  
for Oosafe® Filters  
8 mm diameter soft tubing

Product code: **AS-852085**

## ORDER INFORMATION

- OOIF-SM04 Oosafe® Filter 4
- OOIF-ST06 Oosafe® Filter 6
- OOFCS-MC Oosafe® Filter Connection Set for Benchtop Incubators
- OOHLD-01 Magnet Holder for Oosafe® Filters
- AS-852086 Connector for Oosafe® Filters, 6 mm diameter hard tubing
- AS-852085 Connector for Oosafe® Filters, 8 mm diameter soft tubing

4 X



4 X





SparMED ApS  
CVR: DK-30 89 85 75  
Address: Ryttermarken 2, 3520 Farum, DENMARK  
Phone: (+45) 39 40 25 03



MK\_4.3.B3 rev. 01.01.20